

PUBLIC LIBRARY
AUTHORITY
STATISTICS

Actuals

2002

AN CHOMHAIRLE LEABHARLANNA
THE LIBRARY COUNCIL

53 & 54 Upper Mount Street
Dublin 2
Ireland

Telephone: +353 (0)1-676 1167

Fax: +353 (0)1-676 6721

E-mail: info@librarycouncil.ie

Web site: www.librarycouncil.ie

An Chomhairle Leabharlanna was established by the *Public Libraries Act 1947*.

The functions of the Council, as outlined in the *Local Government Act 2001* are:

- to provide advice and assistance to local authorities in relation to the improvement of the public library service
- to make such recommendations to the Minister in relation to the public library service as it sees fit
- to maintain and operate the central library established under Section 2 of the *Public Libraries Act, 1947 (No.40 of 1947)*
- to promote and facilitate library co-operation

Statistical series issued by An Chomhairle Leabharlanna:

Public Library Authorities Annual Estimates of Expenditure

Public Library Authority Statistics - Actuals. (Annual)

Public Library Statistics: an Analysis of Trends in Relation to Irish Public Libraries.

Statistical data on Irish public libraries also appears in:

Statistical Abstract / Central Statistics Office. - Dublin: Stationery Office
(Annual)

Public Library Statistics - Actuals. - London: CIPFA, (Annual)

Public Library Statistics -Estimates. - London: CIPFA, (Annual)

CONTENTS

Actuals, 2002

Introduction	1-2
Comparison between 2001 and 2002	3-4
Summary 1998-2002	5-6
Summary tables, 1998-2002	7-11
1: Income: recurrent and capital	7
2: Expenditure: recurrent and capital	7
3: Staffing	8
4: Collections	9
5: Issues	9
5.1: Registered membership	10
6: Service points	10
7: Services to schools	11
7.1: National primary school pupil population	11

Summary charts, 1998-2002

1: Comparison between expenditure of 1998 and 2002	5
2: Total expenditure	7
3: Expenditure on stock	8
4: Comparison of estimated and actual expenditure	8
5: Comparison of estimated and actual expenditure on stock acquisitions	8
6: Comparison of staffing ratios between 1998 and 2002	8
7: Staffing levels by grade	8
8: Items in stock	9
9: Annual additions and withdrawals to stock	9
10: Issues by stock category	9
11: Total issues	9
12: Registered membership	10
12: Registered membership by age as a percentage of population	10
13: Comparison of opening hours between 1998 and 2002	10
14: Number of service points	10

Tables 2002

1: Income	12
1.1 Capital Income	13
1.2: Department of the Environment & Local Government Capital Grant Allocations	14
2: Expenditure - Salaries and stock	15
2.1: Expenditure - Premises, transport, etc.	16
2.2: Capital Expenditure	17
3: Staffing	18
3.1: Staffing - Dún Laoghaire Rathdown County	19
3.2: Staffing - Fingal County	19
3.3: Staffing - South Dublin County	19
3.4: Staffing - Dublin City	19
4: Collections - Books and serials	20
4.1: Collections - Multimedia	21
4.2: Collections - Multimedia - additions and withdrawals	22
5: Issues	23
5.1: Registered membership	24
6: Service points	25
6.1: Service points: <i>continued</i>	26
6.2: Agency services	27
7: Services to schools - Number of schools and pupils served	28
7.1: Services to schools - Stock and issues.	29
Notes on the 2002 returns	30
<i>Appendix 1: Population Tables from the 2002 Census</i>	31

Introduction

Branching Out, the government's policy document for the future of the public library service, was launched in 1998, and set out a programme of development. This report on library authority statistics for 2002 provides therefore a snapshot of the first four years of the *Branching Out* programme. The improvements in public library services over the period are clear from the report, and some highlights are:

- Current expenditure on public library services increased by 58% to €76.46m.
- The number of branch libraries in Ireland increased from 321 to 345.
- The number of hours branch libraries are open to the public per week increased by 15.5% from 7,718 to 8,917.
- Library collections increased by 14%.
- Staffing levels increased by 24%.
- The number of items borrowed rose by 6%.
- The number of branch libraries with public access Internet points increased by 68%, to 90% of branches.
- The number of public access Internet terminals doubled to 1,200.
- Regular library users increased their annual borrowing to 17 items per person, up from 15.8 in 1998.

The first national survey of public library users, carried out in 2002, provides a qualitative dimension to the statistical picture. 28 out of the 32 public library authorities took part in the survey which was funded by the Department of the Environment, Heritage and Local Government and co-ordinated by An Chomhairle Leabharlanna. A pre-survey visitor count was undertaken in February 2002. This gave an annual projection of 12.3 million visits to public libraries of which 8.7 million were made by adults and 3.6 million by children.

Users were asked to provide details of the purpose of their visit, how successful they rated the visit and for their attitudes to a range of subjects such as stock, staff, buildings, and so on. An Chomhairle published a national summary of the results, as well as providing individualised reports for the participating authorities. In some instances, reports for individual branch libraries were also produced. Copies of these are available from An Chomhairle.

The main findings were:

- A significant majority of users (71%) visited the library to borrow books and /or other items.
- 20% of users visited the library with a specific book in mind, of whom over half were able to borrow that book.
- Two-thirds of visitors came to browse (with no particular book in mind) and 83% of these borrowed at least one item.
- 72% of users said they found the level and quality of stock good or very good, with a further 22% commenting that it was adequate.

- 40% of visitors came to find something out and the majority (75%) judged their visit a complete success. A further 15% judged their visit partially successful.
- Over 30% of visitors used the Internet during their visit, and just under one-third of these also borrowed or returned a book.
- The level of user-satisfaction was evidenced by the frequency of users' visits to the library: three-quarters of users visited the library at least once every two weeks.

Asked to comment on their level of satisfaction with the services available in their local library:

- 92% of visitors rated the overall experience as being either good or very good, while 7% rated it as adequate.
- Staff helpfulness, knowledge and expertise were rated as good or very good by 97% of visitors.
- Computer facilities scored an 85% satisfaction rate with a further 11% of users rating them as adequate.
- Children's library facilities and services were rated by 89% of users as good or very good, with 9% finding them adequate.
- Information and enquiry services were rated as good or very good by 93% of visitors, while a further 6% found them adequate.
- 72% of users were happy with the current opening times, while 20% found them adequate.

Taken together, the qualitative and quantitative data provide a rounded picture of public library services in 2002. This picture illustrates that the programme of investment implemented under the *Branching Out* programme was already bearing fruit, in terms of expenditure and in terms of user satisfaction, in 2002. An Chomhairle will continue to explore ways in which to collect information which will reflect the wider use of libraries by members of the public, to add to the evidence provided by our annual statistics.

An Chomhairle thanks the managers and staff of the public library authorities for their assistance in compiling these data.

Norma McDermott
Director

Comparison between 2001 and 2002

Irish local authority public library statistics record a continuing upward trend of service provision and usage in the communities that libraries serve. Through increased expenditure the users have had library services with longer hours, more stock, higher volumes of lending and access to expert staff in more service points.

An Chomhairle Leabharlanna acknowledges the continuing support of library authorities in delivering a better service and the value of the capital grants programme initiated by the Minister for the Environment, Heritage and Local Government.

In national terms and in comparison with the previous year, the returns from public library authorities for 2002 reflect an upturn in most areas of activity. The major changes are as follows:

Income:

- Recurrent income has increased by 17% to €76,544,207 over the 2001 figure of €65,670,750.
- Capital income shows an increase of 83% from €5,650,541 to €10,313,018
- Total income stands at €86,857,225 over the 2001 figure of €71,321,292 or €22.17 per head of population compared with €19.67 in 2001.

Expenditure

- Recurrent expenditure has risen by 16% to €76,461,180 over the 2001 figure of €66,004,561
- Expenditure on stock has risen by 9% to €11,589,682 or €2.96 per head of population, compared with €10,621,216 or €2.93 per capita in 2001
- Capital expenditure has increased by 21% to €13,386,666
- Total expenditure (Recurrent and Capital) is at an all-time high of €89,847,846 or €22.94 per head of population.

Staffing

- 2002 saw an overall increase of 8%, bringing total staffing levels up to a figure of 1,645 from 1,520
- Posts for qualified librarians rose by 1.5% from 341 to 346
- Posts for para-professionals rose by 10% from 979 to 1,078
- Support staff by rose by 10.5% from 200 to 221.

Collections

- Public libraries hold just over 12.6 million items of stock
- Over 1 million new items of stock were added during 2002
- Withdrawals of stock items increased by 27% from 459,068 to 582,730.

Issues

- Book issues increased by 6% from 12,186,218 to 12,930,494
- Multimedia issues increased by 21. from 693,883 to 838,015
- Total issues increased by 7% from 12,880,101 to 13,768,509

Membership ¹

- Registered membership has shown an increase of 2% and stands at 801,426 or 20.5% of the population as opposed to 783,341 or 21.6% in 2001
- Adult membership stands at 502,311 or 16% of the population aged 15 and over as opposed to 497,371 or 18% in 2001
- Children's membership stands at 299,115 or 36% of the 0-14 population. In 2001 the figure was 285,970 or 33%.

Service points

- The total number of branch libraries has increased from 338 to 345
- 62 are open to the public for more than 40 hours per week, compared to 59 in the previous year
- The overall number of hours open to the public has risen from 8,454 to 8,917. This is an increase of almost 6% on the previous year
- 311 out of the total of 345 branches provided the public with access to the Internet via 1,214 dedicated terminals
- In 2001, 147 branches provided the public with access to the online public access catalogue. By 2002 this figure had risen to 171.

¹ In 2001 the definition of a member of a public library was changed from a registered member to an active member (i.e. someone who had borrowed at least one item between January 1st and December 31st of that year). This provides a more accurate indicator of use and at least partly goes towards explaining this decrease. Encouragingly, the 2002 membership figure shows a 3% increase over 2001.

SUMMARY, 1998-2002

Income *(see Summary table 1)*

Recurrent income increased by 57% from €48.7 million to €76.5 million.

Expenditure *(see Summary table 2)*

Recurrent expenditure increased by 58% from €48 million to €76 million giving a five year total of almost €300 million.

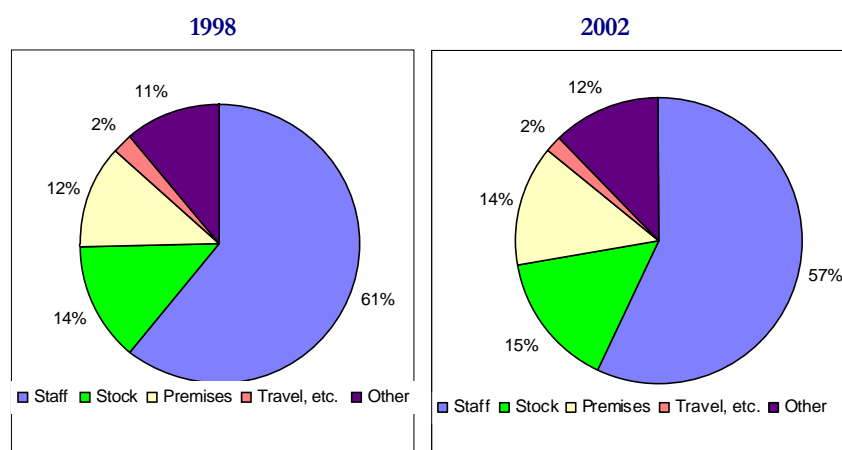


Chart 1: Comparison between 1998 and 2002 of expenditure under individual headings as a % of total expenditure

Despite an increase in staff costs in the order of 48% between 1998 and 2002, the percentage of expenditure on staff, expressed as a percentage of overall expenditure, has fallen from 61% to 57%. Expenditure on stock represents a larger proportion than before, but the main increase has been in infrastructural development, with expenditure on buildings showing the greatest percentage increase.

Capital expenditure increased by 162 % from €5 million to €13 million giving a five year total of €49 million.

Total expenditure increased by 68% from €54 million to €90 million giving a five year total of €348.5 million.

Staffing levels *(see Summary table 3)*

The returns record an increase in professional staff of 30% from 1998 to 2002, a 25% increase in para-professional staff and an increase of 7% in support staff.

Collections *(see Summary table 4)*

Collections of books have increased by 13%

Multimedia stock increased by 37%.

Issues (*see* Summary table 5)

Book issues show an increase of 4% over 1998 figures.

Multimedia stock issues show a 43% increase..

Total issues (books + multimedia) record an increase of 6%.

Membership² (*see* Summary table 5.1)

Membership levels decreased by 3% over 1998. Between 1998 and 2002 the number of adults registered as library users decreased by 3%.

The figures for children show a decrease of 2% (Summary table 7). The primary school pupil population also declined by 2% over the same period. (Summary table 7.1)

Service points (*see* Summary table 6)

The total number of branch libraries increased by 24 over 1998.

The number of branch libraries open for more than 40 hours per week increased by 19 over 1998.

Mobile library units increased by 2 over the same period.

² *The note at the bottom of page 4 also applies here*

SUMMARY TABLES, 1998-2002

Summary table 1: Income: recurrent and capital (€)

Recurrent income	1998	1999	2000	2001	2002	5 year average	% change over 1998	% change over 2001
Total	48,674,189	53,301,143	57,846,443	65,670,751	76,544,207	<i>60,407,346</i>	+ 57.3	+ 16.6
Per capita	13.42	14.70	15.95	18.11	19.54	<i>16.35</i>		
Capital income ⁽¹⁾	54,274,445	10,157,340	10,277,162	5,650,541	10,313,018	<i>8,134,501</i>	+ 141.3	+ 82.5
Total income (recurrent plus capital)	52,948,634	63,458,482	68,123,605	71,321,292	86,857,225	<i>68,541,848</i>	+ 64	+21.8
Per capita	14.60	17.50	18.79	19.67	22.17	<i>18.55</i>		

Note: ⁽¹⁾ Includes capital grants made by the Minister for the Environment and Local Government from National Lottery funds. The capital income returns for:

- o 1999 includes the Minister's allocation of €1.9 million (£1.5m.) towards public library stock and €2 million (£1.54m.) for the provision of public access Internet terminals in branch libraries
- o 2000 includes an allocation of €1.3 million (£1m.) for public library stock and €1,079,686 (£850,522) towards public access Internet terminals
- o 2001 includes an allocation of a further €1.3 million (£1m) for public library stock and €568,287 (£447,562) towards the provision of online services in libraries (this includes €147,169 (£115,905) for the production of the Internet training manual)

Summary table 2: Expenditure: recurrent and capital (€)

Recurrent expenditure	1998	1999	2000	2001	2002	5 year average	% change over 1998	% change over 2001
Total	48,387,858	51,140,140	57,439,567	66,004,561	76,461,180	<i>59,886,661</i>	+ 58.0	+ 15.8
Per capita: Acquisitions	1.82	2.05	2.54	2.93	2.96	2.46		
Total	13.34	14.10	15.84	18.20	19.52	16.20		
Capital expenditure	5,115,386	9,969,571	9,522,049	11,051,287	13,386,666	<i>9,800,992</i>	+ 161.7	+ 21.1
Total expenditure (recurrent plus capital)	53,503,244	61,109,710	66,961,616	77,055,848	89,847,653	<i>69,695,713</i>	+ 67.9	+ 16.6
Per capita	14.76	16.85	18.47	21.25	22.94	<i>18.85</i>		

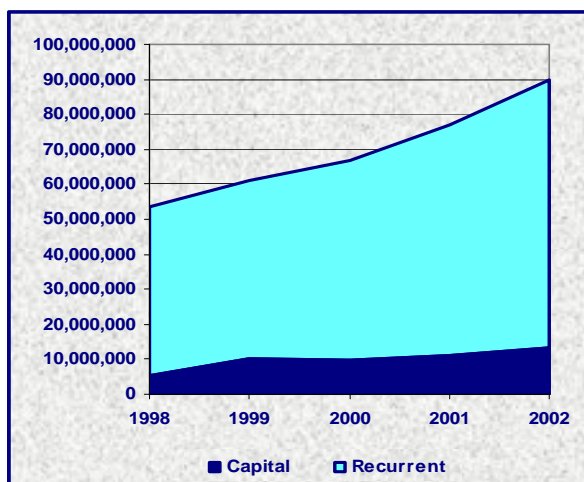


Chart 2: Total expenditure (€)

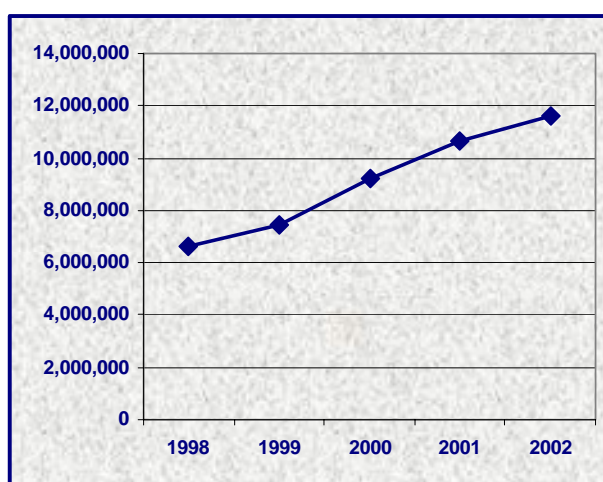


Chart 3: Expenditure on stock (€)

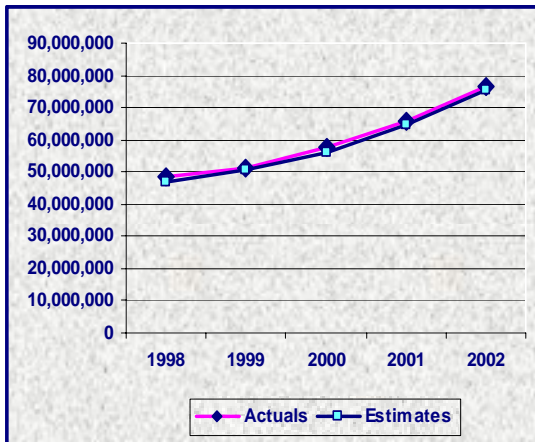


Chart 4: Comparison of estimated and actual expenditure (€)

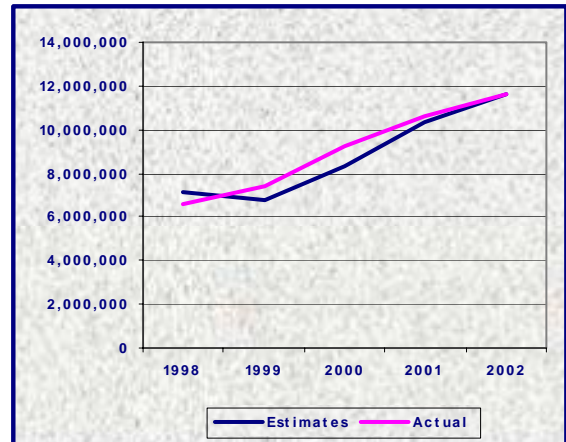


Chart 5: Comparison of estimated and actual expenditure on stock acquisitions (€)

Summary table 3: Staffing (Nos.)

	1998	1999	2000	2001	2002	% change over 1998	% change over 2002
Professional	266.5	259	290.5	341	346	+301	+1.5
Para-professional	859.5	867.75	897.75	978.6	1,078	+25.4	+10.1
Support	206.5	204.25	194.25	199.7	221	+7.0	+10.5
Total	1,332.5	1,331	1,382.5	1,519.3	1,645	+23.5	+8.2

Authorities are asked to provide details of staff complement as full-time equivalents (FTE). Some authorities supply details of staff in post rather than staff complement which leads to some fluctuation in the returns. The number of Branch Librarians (*see* Table 3) is usually given in the returns as an actual number rather than as FTE. This convention is repeated in this publication.

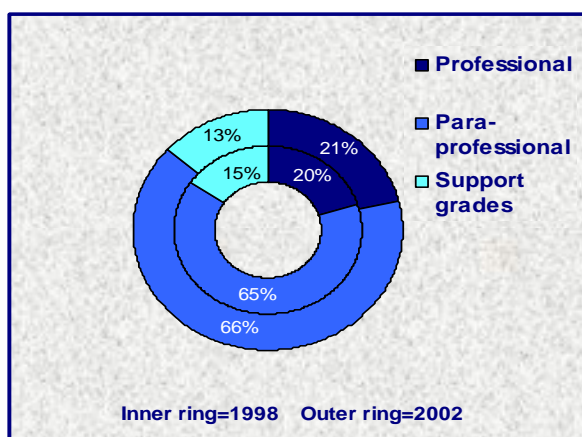


Chart 6: Comparison of staffing ratios between 1998 and 2002 (%)

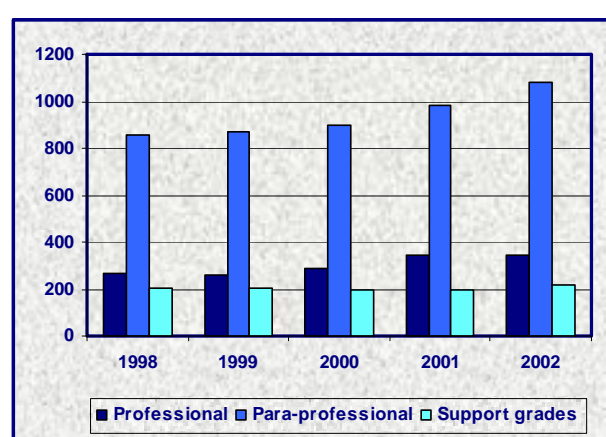


Chart 7: Staffing levels by grade (Nos.)

Summary table 4: Collections (Nos.)

Books:	1998	1999	2000	2001	2002	% change over 1998	% change over 2002
As of 31st December	10,831,591	11,352,868	11,565,923	11,869,969	12,263,766	+ 13.2	+ 3.3
Multimedia items:							
As of 31st December	290,092	321,734	361,065	393,657	398,320	+ 37.3	+ 1.2
Additions to stock:							
Books	623,469	847,203	929,555	966,338	970,641	+55.7	+ 0.4
Multimedia items	22,877	34,623	34,111	37,456	45,188	+ 97.5	+ 20.6
Additions per head of population:	0.2	0.2	0.3	0.3	0.3		
Withdrawals:							
Books	299,441	296,019	556,436	459,068	582,730	+ 94.6	+ 26.9
Multimedia items	5,396	5,555	5,723	6,963	10,406	+ 92.8	+ 49.4

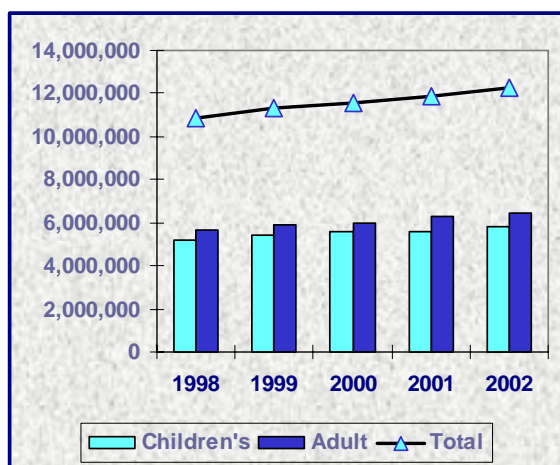


Chart 8: Items in stock (Nos.)

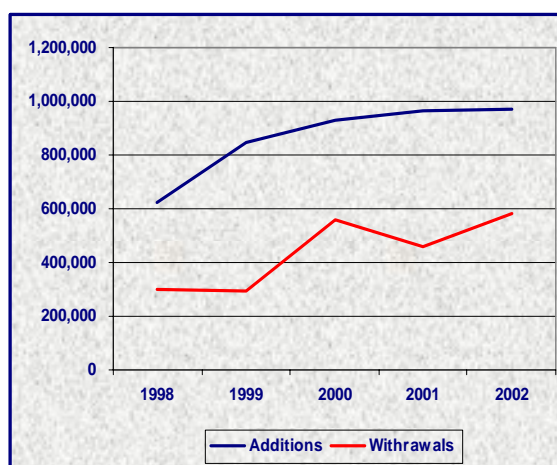


Chart 9: Annual additions and withdrawals to stock (Nos.)

Summary table 5: Issues (Nos.)

Books	1998	1999	2000	2001	2002	% change over 1998	% change over 2001
Children's	4,644,323	4,439,562	4,222,002	4,656,617	5,027,299	+ 8.2	+ 8
Adult issues	7,796,441	7,506,758	7,396,686	7,529,601	7,903,195	+ 1.4	+ 5
Total book issues	12,440,764	11,946,320	11,618,689	12,186,218	12,930,494	+ 3.9	+ 6.1
Multimedia	586,786	563,484	650,078	693,883	838,015	+ 42.8	+ 20.8
Total issues	13,027,550	12,509,804	12,268,767	12,880,101	13,768,509	+ 5.7	+ 6.9

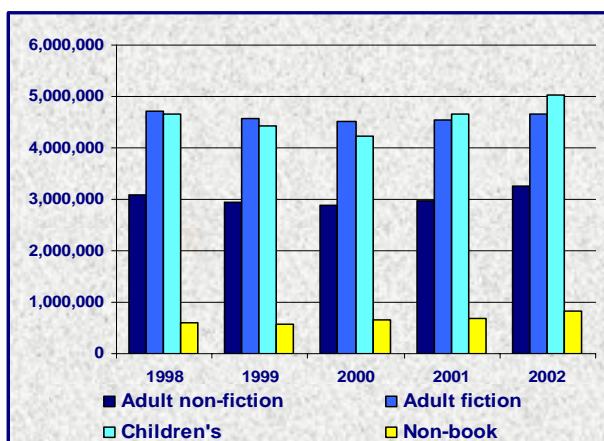


Chart 10: Issues by stock category (Nos.)

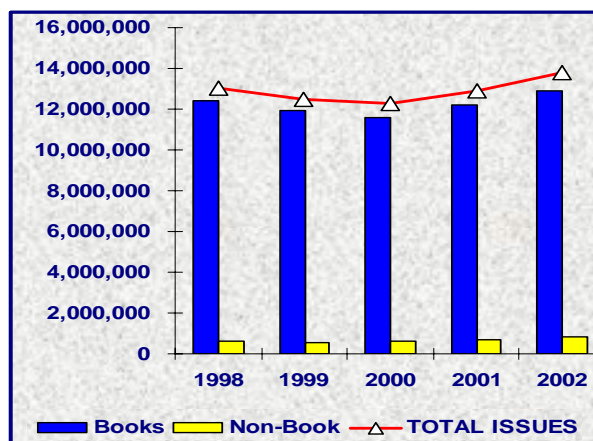


Chart 11: Total issues (Nos.)

Summary table 5.1: Registered Membership (Nos.)

	1998	1999	2000	2001	2002	% change over 1998	% change over 2001
Children (0-14)	305,902	301,770	316,114	285,970	299,115	- 2.2	+ 4.6
Adults (15+)	519,083	546,309	578,492	497,371	502,311	- 3.2	+ 1.0
Total	824,985	848,079	894,606	783,341	801,426	- 2.9	+ 2.3
As % of population							
Children (0-14)	35.6	35.1	36.8	33.3	36.1		
Adult (15+)	18.8	19.7	20.9	18	16.3		
Total population	22.8	23.4	24.7	21.6	20.5		

The decline in registered membership for 2001 is at least partly due to a change in the definition of registered member to one of *active member* (i.e. someone who had borrowed at least one item between January 1st and December 31st) as well as to a change in recording procedures of some authorities [see Notes].

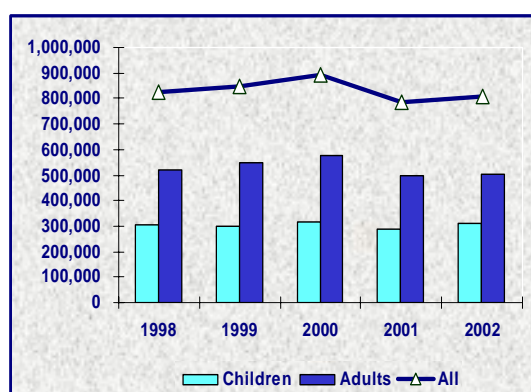


Chart 12: Registered membership (Nos.)

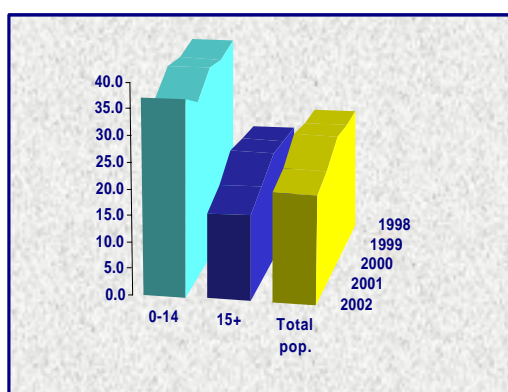


Chart 13: Registered membership by age as a percentage of population (%)

Summary table 6: Service points (Nos.)

	1998	1999	2000	2001	2002
Branch libraries	321	326	331	338	345
Other service points	638	632	555	571	592
Centres	81	57	82	53	83
Mobile units	27	26	26	29	29
Agency services	17	14	17	8	17
Total	1,084	1,055	1,011	999	1,066

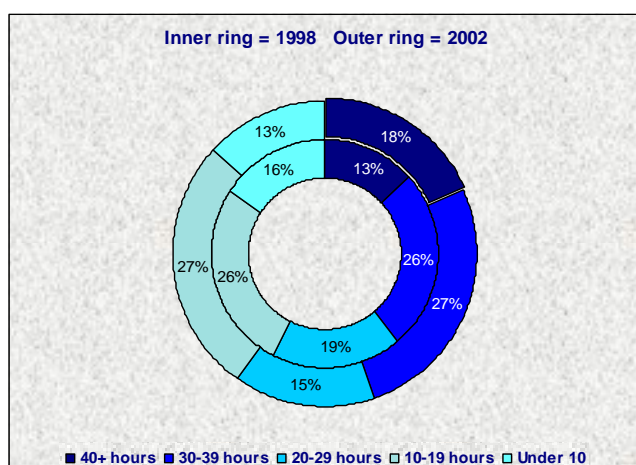


Chart 14: Comparison of opening hours between 1998 and 2002 (%)

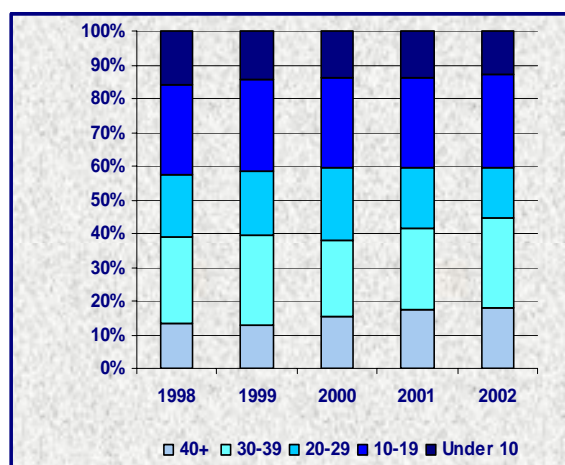


Chart 15: Service points by hours open per week (%)

An Chomhairle began recording the number of hours libraries are open to the public in 1998 when the total was 7,615 hours. By 2002 the number of hours, as reported to An Chomhairle had risen to 8,917.25 – an increase of 15%.

Summary table 7: Services to schools (Nos.)

	1998	1999	2000	2001	2002
No. of schools served	3,121	3,197	3,180	3,179	2,970
Pupil population	412,975	462,334	455,461	457,228	419,253

Summary table 7.1: National primary school pupil population

Academic year	No. of pupils *	% change on previous year	Primary pupils as % of 0-14 population	Grant per pupil €	Total allocation * €
2002/2003	441,065	0		3.40	1,499,621
2001/2002	441,099	+13.9	51.1	3.40	1,499,737
2000/2001	439,340	+ 2.6	51.7	3.00	1,316,518
1999/2000	444,027	+ 4.0	52.6	2.90	1,283,709
1998/1999	451,637	+ 0.4	54.2	2.73	1,234,691

* Figures supplied by the Department of Education & Science

Notes on the following tables

All financial data is expressed in €.

In 2001, the Department of the Environment & Local Government made funds available to public library authorities for the provision of stock (€1,269,738: £1,000,000)) and public access Internet terminals (€1,079,686: £850,522). These grants have been designated as Capital for the purposes of this publication. Where authorities omitted receipt of these funds, the amount has been supplied by An Chomhairle Leabharlanna (*see* Table 2.2.).

Key:

0 Denotes nil or not applicable

* * Denotes data not available

// Denotes too small to be significant

The data given is as supplied by individual authorities to An Chomhairle. Any additional data supplied by An Chomhairle from other sources is shown in green.

Public Library Statistics, 2002. Table 1: INCOME.

	(i)	(ii)	(iii)	(iv)	(v)	(vi)	(vii)	(viii)	(ix)	(x)
AUTHORITY	Local authority contribution	Grants <i>An Chomhairle Leabharlanna</i>	Grants <i>Department of Education & Science</i>	Grants <i>Other</i>	TOTAL GRANTS	Membership charges	Overdue & reservation fees	Other income	TOTAL INCOME	Income per head resident population
<i>County Councils:</i>										
Carlow	697,417	0	18,625	0	18,625	13,320	9,250	2,594	741,206	16.11
Cavan	908,972	0	24,341	10,776	35,117	0	4,661	6,642	955,392	16.90
Clare	2,227,782	0	39,617	0	39,617	80,240	<i>in column (vi)</i>	18,937	2,366,576	22.91
Cork	5,309,334	0	120,095	31,619	151,714	120,733	3,227	10,601	5,595,609	17.23
Donegal	1,856,653	0	58,096	0	58,096	0	0	128,109	2,042,858	14.85
Dún Laoghaire - Rathdown	3,467,800	0	57,616	8,888	66,504	0	119,689	0	3,653,993	19.05
Fingal	4,427,703	49,734	76,031	0	125,765	0	117,446	1,097	4,672,011	23.79
Galway	2,820,700	103,600	80,000	0	183,600	40,000	19,000	3,300	3,066,600	14.67
Kerry	2,000,414	0	49,416	0	49,416	49,539	0	7,939	2,107,308	15.90
Kildare	2,435,069	0	68,092	0	68,092	34,613	50,633	0	2,588,407	15.79
Kilkenny	1,242,187	16,899	31,974	0	48,873	81,597	<i>in column (vi)</i>	27,950	1,400,607	17.43
Laois	863,623	0	23,042	0	23,042	26,350	6,062	16,576	935,653	15.92
Leitrim	768,015	4,215	9,887	0	14,102	17,894	<i>in column (vi)</i>	0	800,011	31.01
Limerick	2,146,111	0	46,318	0	46,318	0	0	14,117	2,206,546	18.19
Longford	594,955	0	8,911	25,419	34,330	8,382	4,100	15,800	657,567	21.17
Louth	1,510,681	0	41,752	0	41,752	62,545	<i>in column (vi)</i>	0	1,614,978	15.86
Mayo	2,063,215	0	47,457	0	47,457	51,000	46,000	166,958	2,374,630	20.22
Meath	1,320,471	0	54,777	0	54,777	0	24,696	1,331	1,401,275	10.46
Monaghan	918,143	0	21,682	0	21,682	6,561	3,663	2,168	952,217	18.11
Offaly	776,297	3,938	28,135	0	32,073	21,556	25,463	26,591	881,980	13.85
Roscommon	896,253	0	20,957	0	20,957	13,188	2,770	871	934,039	17.37
Sligo	918,433	28,093	22,644	0	50,737	0	0	2,858	972,028	16.70
South Dublin	4,573,892	119,167	93,194	0	212,361	0	139,974	14,204	4,940,431	20.69
Tipperary JLC	1,649,995	10,793	56,433	0	67,226	30,885	5,414	112,867	1,866,387	13.32
Waterford	1,161,822	0	21,859	0	21,859	14,506	11,005	7,761	1,216,953	21.37
Westmeath	1,134,233	1,905	30,936	0	32,841	19,741	9,327	45,120	1,241,262	17.27
Wexford	1,174,840	0	49,834	0	49,834	13,000	<i>in column (viii)</i>	53,061	1,290,735	11.07
Wicklow	915,947	0	47,165	444,772	491,937	0	38,014	14,702	1,460,600	12.74
Total: 28	50,780,957	338,344	1,248,886	521,474	2,108,704	705,650	640,394	702,154	54,937,859	17.17
<i>City Councils:</i>										
Cork	2,699,593	33,519	51,874	133,609	219,002	82,375	29,693	74,689	3,105,352	25.23
Dublin	15,531,415	151,416	153,228	24,516	329,160	0	251,157	314,696	16,426,428	33.13
Limerick	1,125,217	0	23,569	0	23,569	32,745	3,282	7,267	1,192,080	22.07
Waterford	813,769	0	18,887	0	18,887	45,723	<i>in column (vi)</i>	4,109	882,488	19.79
Total: 4	20,169,994	184,935	247,558	158,125	590,618	160,843	284,132	400,761	21,606,348	30.12
TOTAL: 32	70,950,951	523,279	1,496,444	679,599	2,699,322	866,493	924,526	1,102,915	76,544,207	19.54

Public Library Statistics, 2002: Table 1.1: CAPITAL INCOME									€
	(i)	(ii)	(iii)	(iv)	(v)	(vi)	(vii)	(viii)	(ix)
Authority	<i>Acquisitions General</i>	<i>Branching Out stock grant</i>	Acquisitions Total	<i>Automation General</i>	<i>Automation Internet grant</i>	Automation Total	Buildings	Vehicles	TOTAL INCOME
County Councils:									
Carlow	19,046	0	19,046	0	0	0	0	0	19,046
Cavan	3,087	0	3,087	55,149	0	55,149	200,457	0	258,693
Clare	0	0	0	0	0	0	0	0	0
Cork	0	0	0	0	0	0	0	0	0
Donegal	0	0	0	0	0	0	369,296	31,368	400,664
Dún Laoghaire-Rathdown	0	0	0	0	0	0	0	0	0
Fingal	0	0	0	0	0	0	0	0	0
Galway	0	0	0	104,620	0	104,620	0	0	104,620
Kerry	0	0	0	78,193	39,060	117,253	0	0	117,253
Kildare	0	0	0	0	0	0	3,533,067	0	3,533,067
Kilkenny	0	0	0	0	0	0	10,000	0	10,000
Laois	0	0	0	0	0	0	0	0	0
Leitrim	0	0	0	160,019	0	160,019	0	0	160,019
Limerick	0	0	0	107,717	0	107,717	0	0	107,717
Longford	0	0	0	0	0	0	0	0	0
Louth	0	0	0	0	0	0	0	0	0
Mayo	0	0	0	0	188,123	188,123	0	0	188,123
Meath	90,269	0	90,269	0	0	0	674,866	0	765,135
Monaghan	0	0	0	0	0	0	0	0	0
Offaly	0	0	0	0	0	0	0	39,307	39,307
Roscommon	0	0	0	0	0	0	0	0	0
Sligo	0	158,717	158,717	19,046	0	19,046	613,130	0	790,893
South Dublin	0	0	0	71,866	0	71,866	0	203,160	275,026
Tipperary JLC	0	0	0	125,969	0	125,969	304,113	81,350	511,432
Waterford	0	0	0	83,219	0	83,219	0	0	83,219
Westmeath	40,982	0	40,982	88,174	0	88,174	556,250	0	685,406
Wexford	0	0	0	101,500	0	101,500	0	0	101,500
Wicklow	0	0	0	0	0	0	70,827	0	70,827
Total: 28	153,384	158,717	312,101	995,472	227,183	1,222,655	6,332,006	355,185	8,221,947
City Councils:									
Cork	0	110,278	110,278	0	0	0	0	0	110,278
Dublin	0	0	0	0	0	0	335,054	0	335,054
Limerick	0	0	0	0	0	0	0	0	0
Waterford	138,105	0	138,105	0	0	0	1,480,429	27,205	1,645,739
Total: 4	138,105	110,278	248,383	0	0	0	1,815,483	27,205	2,091,071
TOTAL:32	291,489	268,995	560,484	995,472	227,183	1,222,655	8,147,489	382,390	10,313,018

Public Library Statistics, 2002: Table 1.2: DEPARTMENT OF THE ENVIRONMENT, HERITAGE AND LOCAL GOVERNMENT GRANT ALLOCATIONS					
	(i)	(ii)	(iii)	(iv)	(v)
Authority	Acquisitions	Automation	Buildings	Vehicles	TOTAL
County Councils:					
Carlow	0	0	0	0	0
Cavan	0	74,610	203,544	0	278,154
Clare	0	176,355	0	0	176,355
Cork	0	0	318,121	316,188	634,309
Donegal	14,071	0	191,994	31,368	237,433
Dún Laoghaire - Rathdown	0	0	0	0	0
Fingal	0	0	0	0	0
Galway	0	306,090	318,638	0	624,728
Kerry	0	128,534	0	0	128,534
Kildare	0	0	387,901	0	387,901
Kilkenny	0	0	0	0	0
Laois	0	116,949	0	0	116,949
Leitrim	0	30,442	0	0	30,442
Limerick	0	190,461	0	0	190,461
Longford	0	71,116	0	0	71,116
Louth	0	0	0	0	0
Mayo	0	177,961	0	0	177,961
Meath	0	0	0	0	0
Monaghan	0	0	0	0	0
Offaly	0	0	0	39,307	39,307
Roscommon	0	0	0	0	0
Sligo	0	31,438	446,210	0	477,648
South Dublin	0	91,252	0	0	91,252
Tipperary JLC	0	81,557	152,368	81,350	315,275
Waterford	0	83,219	0	0	83,219
Westmeath	0	114,533	597,232	0	711,765
Wexford	0	172,084	0	0	172,084
Wicklow	0	0	70,827	0	70,827
<i>Total: 28</i>	14,071	1,846,601	2,686,835	468,213	5,015,720
City Councils:					
Cork	0	161,064	0	0	161,064
Dublin	0	0	335,054	0	335,054
Limerick	0	0	0	0	0
Waterford	0	0	1,618,534	27,205	1,645,739
<i>Total: 4</i>	0	161,064	1,953,588	27,205	2,141,857
TOTAL: 32	14,071	2,007,665	4,640,423	495,418	7,157,577

Public Library Statistics, 2002. Table 2: EXPENDITURE - Salaries and stock.										
Authority	(i) Salaries	(ii) Books <i>General stock Adults</i>	(iii) Books <i>General stock Children's</i>	(iv) Books <i>Primary School Scheme</i>	(v) Multimedia	(vi) Serials	(vii) Other	(viii) TOTAL ACQUISITIONS	(ix) € spent on acquisitions per head	(x) BINDING
County Councils:										
Carlow	425,752	77,506	<i>in column ii</i>	18,625	<i>in column ii</i>	10,322	<i>in column ii</i>	106,453	2.31	6,343
Cavan	610,485	64,691	25,378	24,341	8,364	3,486	0	126,260	2.23	6,570
Clare	1,450,025	267,152	<i>in column ii</i>	39,617	7,384	11,975	0	326,128	3.16	2,113
Cork	1,498,439	501,087	221,163	130,576	29,953	49,082	25,294	957,156	2.95	4,315
Donegal	901,913	241,558	101,176	58,838	44,680	5,765	0	452,017	3.29	1,121
Dún Laoghaire – Rathdown	2,395,123	201,708	89,210	102,032	0	38,419	0	431,369	2.25	8,039
Fingal	2,882,264	359,932	81,382	110,631	80,968	127,108	0	760,021	3.87	0
Galway	1,439,500	361,800	<i>in column ii</i>	80,000	10,800	20,000	20,600	493,200	2.36	3,700
Kerry	1,441,153	253,948	<i>in column ii</i>	44,440	25,394	19,046	0	342,828	2.59	6,348
Kildare	1,584,180	262,698	<i>in column ii</i>	68,092	15,693	0	0	346,483	2.11	0
Kilkenny	903,943	61,201	19,788	12,161	11,698	13,232	1,222	119,302	1.48	292
Laois	548,880	99,488	40,183	23,042	8,461	2,965	0	174,139	2.96	0
Leitrim	408,657	105,043	<i>in column ii</i>	10,536	<i>in column ii</i>	<i>in column ii</i>	<i>in column ii</i>	115,579	4.48	0
Limerick	1,331,768	186,456	58,580	44,864	38,337	12,497	0	340,734	2.81	0
Longford	337,266	63,487	<i>in column ii</i>	10,793	5,714	0	0	79,994	2.57	2,500
Louth	887,065	155,044	<i>in column ii</i>	41,752	<i>in column ii</i>	6,742	22,761	226,299	2.22	698
Mayo	1,320,730	115,000	94,000	52,000	13,000	7,000	0	281,000	2.39	7,000
Meath	778,805	179,384	<i>in column ii</i>	43,094	<i>in column ii</i>	<i>in column ii</i>	<i>in column ii</i>	222,478	1.66	0
Monaghan	485,788	119,183	35811	0	4,002	3,549	3,103	165,648	3.15	0
Offaly	566,326	107,213	<i>in column ii</i>	28,135	24,921	5,902	0	166,171	2.61	450
Roscommon	562,420	109,921	47,100	19,303	9,373	9,155	0	194,852	3.62	12,495
Sligo	577,883	100,816	20,543	11,401	19,384	9,476	6,138	167,758	2.88	758
South Dublin	2,866,800	625,000	<i>in column ii</i>	93,000	0	0	50,000	768,000	3.22	0
Tipperary JLC	1,212,556	168,670	<i>in column ii</i>	56,434	<i>in column ii</i>	<i>in column ii</i>	<i>in column ii</i>	225,104	1.61	3,573
Waterford	662,354	52,629	40,137	21,859	9,484	13,115	0	137,224	2.41	3,932
Westmeath	757,814	180,635	**	31,041	**	**	**	211,676	2.95	**
Wexford	644,210	229,678	48,707	55,706	35,985	2,000	0	372,076	3.19	<i>in column ii</i>
Wicklow	863,136	198,055	<i>in column ii</i>	38,000	9,423	13,966	0	259,444	2.26	<i>in column ii</i>
Total: 28	30,345,235	5,448,983	923,158	1,270,313	413,018	384,802	129,118	8,569,393	2.68	70,247
City Councils:										
Cork	1,938,186	216,900	63,500	50,100	32,000	32,000	0	394,500	3.21	30,000
Dublin	10,184,839	1,320,968	305,988	153,228	242,464	201,130	0	2,223,778	4.49	47,756
Limerick	557,848	109,604	26,904	27,885	6,652	4,961	3,240	179,246	3.32	4,894
Waterford	584,157	103,284	65191	21,734	26,622	5,818	116	222,765	5.00	
Total: 4	13,265,030	1,750,756	461,583	252,947	307,738	243,909	3,356	3,020,289	4.21	82,650
TOTAL: 32	43,610,265	7,199,739	1,384,741	1,523,260	720,756	628,711	132,474	11,589,682	2.96	152,897

Public Library Statistics, 2002. Table 2.1: EXPENDITURE - Premises, Transport, etc.												(€)
	(xi)	(xii)	(xiii)	(xiv)	(xv)	(xvi)	(xvii)	(xviii)	(xix)	(xx)	(xxi)	(xxii)
	~~~~~ PREMISES ~~~~~			TRANSPORT & SUBSISTENCE			Library computing costs	Leasing & loan repayments	Contribution to An Chomhairle Leabharlanna	Other expenditure	TOTAL EXPENDITURE	Expenditure per head of resident population
Authority	HQ	Branches	TOTAL	Transport	Travel & Subsistence	TOTAL						
County Councils:												
Carlow	26,374	7,387	33,761	711	2,842	3,553	37,852	53,519	12,361	61,611	741,205	16.11
Cavan	112,800	in column xii	112,800	2,092	11,137	13,229	0	10,653	16,024	59,372	955,393	16.90
Clare	9,472	211,975	221,447	1,769	42,714	44,483	258,083	3911	27,896	32,490	2,366,576	22.91
Cork	113,785	1,584,812	1,698,597	248,665	123,228	371,893	63,487	0	87,107	914,614	5,595,609	17.23
Donegal	125,186	145,642	270,828	16,312	28,689	45,001	82,312	0	38,447	251,217	2,042,856	14.85
Dún Laoghaire - Rathdown	127,955	81,398	209,353	23,749	12184	35,933	32,478	0	56,388	259,268	3,427,951	17.87
Fingal	31,678	838,300	869,978	7,460	27,499	34,959	29,090	0	49,734	0	4,626,046	23.55
Galway	765,400	in column xii	765,400	25,200	36,600	61,800	6,300	207,200	39,000	50,500	3,066,600	14.67
Kerry	5,000	20,384	25,384	22,855	25,312	48,167	19,046	36,124	37,386	150,872	2,107,308	15.90
Kildare	190,999	in column xii	190,999	18,033	52,883	70,916	47,765	0	40,065	308,000	2,588,408	15.79
Kilkenny	52,087	129,696	181,783	46,797	14,432	61,229	48,705	14,562	22,324	75,038	1,427,178	17.76
Laois	72,713	70,116	142,829	9,177	0	9,177	13,963	0	15,683	30,981	935,652	15.92
Leitrim	0	18,939	18,939	0	15,177	15,177	102,184	0	7,588	131,887	800,011	31.01
Limerick	13,565	101,161	114,726	9,835	49,601	59,436	149,163	0	33,558	112,906	2,142,291	17.66
Longford	83,869	78,300	162,169	8,500	9,700	18,200	50,838	0	6,600	0	657,567	21.17
Louth	22,094	19,177	41,271	18,589	14,296	32,885	68,769	88,035	27,376	153,365	1,525,763	14.98
Mayo	288,900	0	288,900	116,000	42,000	158,000	279,000	0	40,000	0	2,374,630	20.22
Meath	128,649	in column xii	128,649	10,759	in column xv	10,759	148,248	0	32,487	79,849	1,401,275	10.46
Monaghan	62,528	52,545	115,073	5,665	22,540	28,205	0	0	15,228	609	810,551	15.41
Offaly	10,099	19,745	29,844	1,413	7,188	8,601	9,799	3,895	15,509	81,385	881,980	13.85
Roscommon	18,706	15,130	33,836	14,374	7,655	22,029	32,820	25,395	15,411	60,178	959,436	17.84
Sligo	56,186	1,200	57,386	3,500	15,850	19,350	76,065	0	17,500	0	916,700	15.75
South Dublin	727,416	in column xii	727,416	62,083	in column xv	62,083	152,368	254,000	67,019	63,852	4,961,538	20.77
Tipperary JLC	73,571	in column xii	73,571	27,046	in column xv	27,046	133,521			316,019	1,991,390	14.21
Waterford	11,175	37,908	49,083	2,365	27,925	30,290	50,331	1,789	15,470	266,479	1,216,952	21.37
Westmeath	33,068	85,967	119,035	7,491	11,440	18,931	47,249	0	18,783	53,286	1,226,774	17.07
Wexford	80,000	100,000	180,000	3,000	30,000	33,000	30,000	0	31,449	0	1,290,735	11.07
Wicklow	54,307	in column xii	54,307	0	16,066	16,066	31,447	84,252	30,422	121,526	1,460,600	12.74
Total: 28	3,297,582	3,619,782	6,917,364	713,440	646,958	1,360,398	2,000,883	783,335	816,815	3,635,304	54,498,975	17.03
City Councils												
Cork	184,907	in column xii	184,907	12,000	3,000	15,000	216,841	0	37,751	288,167	3,105,352	25.23
Dublin	462,762	2,463,232	2,925,994	35,023	37,477	72,500	280,011	114,151	142,874	573,737	16,565,640	33.41
Limerick	253,972	14,488	268,460	0	4,001	4,001	134,705	0	15,458	27,466	1,192,078	22.07
Waterford	227,535	in column xii	227,535	1,000	2,974	3,974	48,073	0	12,630	0	1,099,134	24.65
Total: 4	1,129,176	2,477,720	3,606,896	48,023	47,452	95,475	679,630	114,151	208,713	889,370	21,962,204	30.61
TOTAL: 32	4,426,758	6,097,502	10,524,260	761,463	694,410	1,455,873	2,680,513	897,486	1,025,528	4,524,674	76,461,179	19.52

Table 2.2: Public library statistics, 2002: CAPITAL EXPENDITURE					€
AUTHORITY	(i)	(ii)	(iii)	(iv)	(v)
	<i>Acquisitions</i>	<i>Automation</i>	<i>Buildings</i>	<i>Vehicles</i>	TOTAL EXPENDITURE EXPENDITURE
<b>County Councils:</b>					
Carlow	16,216	0	0	0	16,216
Cavan	0	18,097	637,353	467	655,917
Clare	0	0	0	0	0
Cork	0	0	0	0	0
Donegal	27,091	0	492,395	31,368	550,854
Dún Laoghaire - Rathdown	0	225,000	0	0	225,000
Fingal	0	0	0	0	0
Galway	0	139,493	42,980	0	182,473
Kerry	93,079	0	239,979	0	333,058
Kildare	0	0	502,959	0	502,959
Kilkenny	0	0	62,298	0	62,298
Laois	0	0	18,602	0	18,602
Leitrim	0	160,019	227,515	0	387,534
Limerick	0	107,717	0	0	107,717
Longford	0	0	0	0	0
Louth	0	49,266	0	0	49,266
Mayo	0	188,123	115,867	0	303,990
Meath	90,269	0	674,866	0	765,135
Monaghan	0	3,131	11,037	0	14,168
Offaly	0	0	0	41,636	41,636
Roscommon	0	0	0	0	0
Sligo	0	0	0	0	0
South Dublin	0	95,822	0	203,160	298,982
Tipperary JLC	0	110,572	88,882	81,350	280,804
Waterford	128,041	110,958	95,904	0	334,903
Westmeath	82,025	66,662	741,666	0	890,353
Wexford	0	101,500	0	0	101,500
Wicklow	0	0	0	0	0
Total: 28	436,721	1,376,360	3,952,303	357,981	6,123,365
<b>City Councils</b>					
Cork	110,278	15,237	0	0	125,515
Dublin	0	30,000	4,930,951	0	4,960,951
Limerick	0	0	0	0	0
Waterford	198,516	0	1,951,114	27,205	2,176,835
Total: 4	308,794	45,237	6,882,065	27,205	7,263,301
TOTAL:32	745,515	1,421,597	10,834,368	385,186	13,386,666

Public Library Statistics, 2002. Table 3: STAFFING															
	(i)	(ii)	(iii)	(iv)	(v)	(vi)	(vii)	(viii)	(ix)	(x)	(xi)	(xii)	(xiii)	(xiv)	(xv)
	Chief Librarian	Executive Librarian	Assistant Librarian	Senior Library Assistants	Library Assistants	Branch Assistant	Branch Librarian	Clerical Officers	Driver Assistants	Van Drivers	Support Staff	TOTALS			TOTAL Staff Complement
												Professional	Para Professional	Support Staff	
County Councils:															
Carlow	1	1	2	2	3	0	4	1	1	0	1	4	11	1	16
Cavan	1	1	3	4	4	0	4.25	1	1	0	0	5	14.25	0	19.25
Clare	1	4	5	13.5	5	0	7.75	0	0	1	6.7	10	26.25	7.7	43.95
Cork	1	3	8.5	8	34	0	40	1	7	0	3	12.5	90	3	105.5
Donegal	1	0	3	8	8	0	23	2	2	0	3	4	43	3	50
Dún Laoghaire - Rathdown	See Table 3.1 for details of grades											23	50	13	86
Fingal	See Table 3.2 for details of grades											30.5	75	23	128.5
Galway	1	2	5	12	7	0	29	2	3	0	1	8	53	1	62
Kerry	1	1	6	6	19	0	0	3	3	0	3	8	31	3	42
Kildare	1	1	10	9	17	0	14	3	2	0	9	12	45	9	66
Kilkenny	1	0	3	3	8	0	6	1	2	0	4	4	20	4	28
Laois	1	1	2	2	1	0	15	1	0	0	3	4	19	3	26
Leitrim	1	0	1	0	3	0	6	1	0	0	0	2	10	0	12
Limerick	1	4	6	6	6	1	24	1	2	0	7	11	40	7	58
Longford	1	2	2	3	5	0	5	1	0	0.5	0.5	5	14	1	20
Louth	1	1	5	7	8	0	3	1	0	2	2	7	19	4	30
Mayo	1	3	3	7	10	0	12	2	2	0	1	7	33	1	41
Meath	1	2	3	4	5	0	11	2	1	0	1	6	23	1	30
Monaghan	1	1	3	3	3	0	4	0	2	0	2	5	12	2	19
Offaly	1	1	1	2	3	0	7	3	1	0	2	3	16	2	21
Roscommon	1	0	3	3	5	0	4	1	2	0	1.5	4	15	1.5	20.5
Sligo	1	1	2	2	6	0	6	1	0	1	0	4	15	1	20
South Dublin	See Table 3.3 for details of grades											25	56	20	101
Tipperary JLC	1	1	6	6	8	0	12	4	2	0	6	8	32	6	46
Waterford	1	0	4	5.6	6	0	2	0	1	0	2.5	5	14.6	2.5	22.1
Westmeath	1	2	1	3.5	8	0	6	1	1	0	2	4	19.5	2	25.5
Wexford	1	2	3	3	12	0	2	2	2	1	4	6	21	5	32
Wicklow	1	2	4	5	3	0	19	1	1	0	6	7	29	6	42
Total 28												234	846.6	132.7	1,213.3
City Councils:															
Cork	1	3	9	11	19	0	0	3	0	0	9	13	33	9	55
Dublin	See Table 3.4 for details of grades											90	171	75	336
Limerick	1	2	2	5	4	0	0	1	0	0	3	5	10	3	18
Waterford	1	0	3	4	12.5	0	0	1	0	0.5	0.5	4	17.5	1	22.5
Total: 4												112	231.5	88	431.5
TOTAL: 32												346	1,078.1	220.7	1,644.80

Public Library Statistics, 2002. Table 3.1: STAFFING - DÚN LAOGHAIRE-RATHDOWN COUNTY			
	(i)	(ii)	(iii)
	<i>HQ</i>	<i>Branches</i>	<b>TOTAL</b>
<i>Grade</i>		<i>/ Mobiles</i>	
County Librarian	1		<b>1</b>
Senior Librarians	4	3	<b>7</b>
Librarians	5	10	<b>15</b>
Senior Library Assistants	3	12	<b>15</b>
Library Assistants	11	19	<b>30</b>
Branch Librarians	0	1	<b>1</b>
Clerical Officers	4	0	<b>4</b>
Driver / Assistants	0	0	<b>0</b>
Van Drivers	2	0	<b>2</b>
Other Grades	3	8	<b>11</b>
<b>TOTALS</b>	<b>33</b>	<b>53</b>	<b>86</b>
Public Library Statistics, 2002. Table 3.3: STAFFING - SOUTH DUBLIN COUNTY			
	(i)	(ii)	(iii)
	<i>HQ</i>	<i>Branches</i>	<b>TOTAL</b>
<i>Grade</i>		<i>/ Mobiles</i>	
County Librarian	1		<b>1</b>
Senior Librarians	3	5	<b>8</b>
Librarians	5	11	<b>16</b>
Senior Library Assistants	3	15	<b>18</b>
Library Assistants	0	36	<b>36</b>
Branch Librarians	0	1	<b>1</b>
Clerical Officers	1	0	<b>1</b>
Driver Assistants	0	0	<b>0</b>
Van Drivers	1	4	<b>5</b>
Other Grades	1	14	<b>15</b>
<b>TOTALS</b>	<b>15</b>	<b>86</b>	<b>101</b>

Public Library Statistics, 2002. Table 3.2: STAFFING - FINGAL COUNTY			
	(i)	(ii)	(iii)
	<i>HQ</i>	<i>Branches</i>	<b>TOTAL</b>
<i>Grade</i>		<i>/ Mobiles</i>	
County Librarian	1		<b>1</b>
Senior Librarians	2	7.5	<b>9.5</b>
Librarians	3	17	<b>20</b>
Senior Library Assistants	3	20	<b>23</b>
Library Assistants	8	41	<b>49</b>
Branch Librarians	0	2	<b>2</b>
Clerical Officers	1	0	<b>1</b>
Driver Assistants	0	0	<b>0</b>
Van Drivers	1	4	<b>5</b>
Other Grades	0	18	<b>18</b>
<b>TOTALS</b>	<b>19</b>	<b>109.5</b>	<b>128.5</b>
Public Library Statistics, 2002. Table 3.4: STAFFING - DUBLIN CITY.			
	(i)	(ii)	(iii)
	<i>HQ</i>	<i>Branches</i>	<b>TOTAL</b>
<i>Grade</i>		<i>/ Mobiles</i>	
Chief Librarian	1		<b>1</b>
Deputy Librarian	1		<b>1</b>
Divisional Librarians	4.5	2	<b>6.5</b>
Senior Librarians	11	20.5	<b>31.5</b>
Librarians	9	41	<b>50</b>
Senior Library Assistants	4	44	<b>48</b>
Library Assistants	30*	78	<b>108</b>
Clerical Officers	9	3	<b>12</b>
Mobile Drivers	3	0	<b>3</b>
Van Drivers	3	0	<b>3</b>
Other Grades	11	61	<b>72</b>
<b>TOTALS</b>	<b>86.5</b>	<b>249.5</b>	<b>336</b>
Above relates to staff in post. Staff establishment figures given as: Professional posts: 97, Para-professional: 156; Other: 88; Total: 341			

Public Library Statistics, 2002. Table 4: COLLECTIONS - BOOKS & SERIALS.													
Authority	(i)	(ii)	(iii)	(iv)	(v)	(vi)	(vii)	(viii)	(ix)	(x)	(xi)	(xii)	(xiii)
	BOOKS IN STOCK				TOTAL BOOKS IN STOCK	Stock items per head population	SERIAL SUBSCRIP -TIONS	BOOKS ADDED TO STOCK, 2002				TOTAL Added to Stock	WITHDRAWN 2002 TOTAL
	Adult non-fiction	Adult fiction	Children's	Schools				Adult non-fiction	Adult fiction	Children's	Schools		
County Councils:													
Carlow	36,283	21,655	23,170	6,450	87,558	1.9	122	2,161	2,388	3,132	**	7,681	0
Cavan	41,219	31,913	63,828	23,784	160,744	2.8	59	2,434	2,240	4,887	2,832	12,393	2,831
Clare	96,960	84,761	93,529	in column	275,250	2.7	60	8,316	4,389	13,122	0	25,827	17,840
Cork	375,049	393,794	600,637	in column	1,369,480	4.2	96	8,649	18,495	26,411	0	53,555	42,504
Donegal	98,525	91,481	151,467	93,427	434,900	3.2	235	4,872	6,874	10,108	5,078	26,932	3,719
Dún Laoghaire - Rathdown	142,312	67,417	91,038	93,162	393,929	2.1	335	14,345	5,803	10,796	14,100	45,044	16,652
Fingal	142,412	75,537	106,123	29,222	353,294	1.8	251	26,920	14,620	19,235	17,324	78,099	31,118
Galway	132,620	121,305	160,951	110,150	525,026	2.5	**	9,120	11,517	11,942	11,178	43,757	10,494
Kerry	108,342	59,959	90,700	133,350	392,351	3.0	118	5,498	5,228	6,282	8,383	25,391	218
Kildare	133,397	140,822	224,394	30,000	528,613	3.2	50	7,081	8,187	9,144	in column	24,412	6,982
Kilkenny	74,618	69,804	96,282	62,500	303,204	3.8	250	1,808	1,401	5,324	in column	8,533	3,740
Laois	48,571	35,875	59,930	51,751	196,127	3.3	21	3,323	2,372	5,008	2,945	13,648	2,980
Leitrim	27,414	21,748	30,171	16,337	95,670	3.7	**	2,643	2,535	5,215	2,206	12,599	1,201
Limerick	143,710	156,435	322,808	see note	622,953	5.1	**	4,388	5,860	15,186	see note	25,434	165,000
Longford	34,944	35,723	58,299	50,876	179,842	5.8	**	1,143	1,409	4,821	2,025	9,398	0
Louth	71,372	48,361	58,531	32,300	210,564	2.1	27	3,263	3,896	8,272	in column	15,431	12,485
Mayo	98,089	103,108	147,236	145,133	493,566	4.2	40	7,211	8,153	7,897	6,100	29,361	4,568
Meath	118,811	69,600	132,732	88,836	409,979	3.1	**	4,704	4,018	10,281	4,218	23,221	6,615
Monaghan	58,092	38,268	85,861	17,926	200,147	3.8	**	3,064	3,513	3,045	1,851	11,473	10,152
Offaly	44,489	47,297	72,690	52,475	216,951	3.4	156	2,132	3,120	4,681	4,582	14,515	8,879
Roscommon	82,306	52,739	78,473	32,136	245,654	4.6	**	3,131	3,455	6,964	4,949	18,499	9,146
Sligo	32,038	48,960	37,543	15,000	133,541	2.3	**	2,654	3,493	4,426	1,622	12,195	5,384
South Dublin	166,456	82,153	161,149	83,171	492,929	2.1	**	28,366	22,402	54,742		105,510	28,715
Tipperary JLC	165,882	198,634	199,106	80,625	644,247	4.6	**	**	**	**	**	**	0
Waterford	33,110	23,083	30,425	27,366	113,984	2.0	**	2,615	2,413	5,937	5,640	16,605	3,944
Westmeath	72,302	29,049	50,242	40,230	191,823	2.7	**	3,790	4,177	10,772	7,487	26,226	5,998
Wexford	96,776	64,520	51,803	199,519	412,618	3.5	16	4,378	5,144	13,155	11,296	33,973	474
Wicklow	113,566	77,133	114,657	41,957	347,313	3.0	80	3,780	3,054	5,787	7,916	20,537	20,395
Total: 28	2,789,665	2,291,134	3,393,775	1,557,683	10,032,257	3.1	1,916	171,789	160,156	286,572	121,732	740,249	422,034
City Councils:													
Cork	120,181	69,654	81,506	145,415	416,756	3.4	225	6,424	6,769	7,201	9,867	30,261	25,053
Dublin	797,796	233,026	223,051	219,302	1,473,175	3.0	504	52,014	31,851	47,007	23,504	154,376	107,062
Limerick	65,119	34,537	44,953	80,621	225,230	4.2	38	2,971	2,402	3,274	5,641	14,288	4,177
Waterford	55,598	24,400	36,350	**	116,348	2.6	**	11,266	6,198	14,003	**	31,467	24,404
Total: 4	1,038,694	361,617	385,860	445,338	2,231,509	3.1	767	72,675	47,220	71,485	39,012	230,392	160,696
TOTAL: 32	3,828,359	2,652,751	3,779,635	2,003,021	12,263,766	3.1	2,683	244,464	207,376	358,057	160,744	970,641	582,730

Public Library Statistics, 2002. Table 4.1: COLLECTIONS – Multimedia													
AUTHORITY	(i)	(ii)	(iii)	(iv)	(v)	(vi)	(vii)	(viii)	(ix)	(x)	(xi)	(xii)	(xiii)
	Sound recordings		Spoken word cassettes	Talking books	Micro-form sets	Videos	Films	Computer software	Photographic	Maps	Art	Other	TOTAL
	<i>Discs</i>	<i>Tapes</i>											
<i>County Councils:</i>													
Carlow	468	0	0	1,258	1,776	101	0	0	0	153	12	**	3,768
Cavan	0	**	2,816	0	321	170	0	170	**	**	**	0	3,477
Clare	1,351	0	770	1,042	767	0	0	0	7,849	341	0	0	12,120
Cork	0	0	0	7,994	0	0	0	0	0	0	0	0	7,994
Donegal	4,293	3,463	0	2,788	645	3,817	0	82	0	674	0	0	15,762
Dún Laoghaire – Rathdown	979	12,727	0	0	12	328	0	229	0	884	210	730	16,099
Fingal	7,600	5,738	0	5,561	0	1,022	0	911	0	134	1,190	1,253	23,409
Galway	0	0	0	9,986	1,137	0	0	0	3,170	380	0	0	14,673
Kerry	659	4,917	0	693	3,751	978	0	607	214	0	0	0	11,819
Kildare	1,460	6,055	123	1,942	561	1,704	0	202	294	425	0	0	12,766
Kilkenny	1,925	<i>in column (i)</i>	<i>in column (i)</i>	<i>in column (i)</i>	<i>in column (i)</i>	<i>in column (i)</i>	<i>in column (i)</i>	<i>in column (i)</i>	<i>in column (i)</i>	<i>in column (i)</i>	<i>in column (i)</i>	<i>in column (i)</i>	1,925
Laois	888	2,562	0	1,164	862	320	0	42	420	121	0	0	6,379
Leitrim	228	313	0	151	230	612	0	0	3,700	100	40	0	5,374
Limerick	**	**	**	**	**	**	**	**	**	**	**	**	**
Longford	4,113	<i>in column (i)</i>	<i>in column (i)</i>	<i>in column (i)</i>	<i>in column (i)</i>	<i>in column (i)</i>	<i>in column (i)</i>	<i>in column (i)</i>	<i>in column (i)</i>	<i>in column (i)</i>	<i>in column (i)</i>	<i>in column (i)</i>	4,113
Louth	1,869	4,900	<i>in column (i)</i>	<i>in column</i>	779	1,195	0	0	61	261	0	118	9,183
Mayo	0	2,300	0	0	668	700	0	305	587	55	0	1,515	6,130
Meath	5,229	<i>in column (i)</i>	<i>in column (i)</i>	<i>in column (i)</i>	<i>in column (i)</i>	<i>in column (i)</i>	<i>in column (i)</i>	<i>in column (i)</i>	<i>in column (i)</i>	<i>in column (i)</i>	<i>in column (i)</i>	<i>in column (i)</i>	5,229
Monaghan	2,096	1,076	0	640	0	44	0	13	420	130	0	0	4,419
Offaly	8	0	0	1,148	307	1,364	2	289	7,214	505	67	0	10,904
Roscommon	13,961	<i>in column (i)</i>	<i>in column (i)</i>	<i>in column (i)</i>	<i>in column (i)</i>	<i>in column (i)</i>	<i>in column (i)</i>	<i>in column (i)</i>	<i>in column (i)</i>	<i>in column (i)</i>	<i>in column (i)</i>	<i>in column (i)</i>	13,961
Sligo	180	27	95	1,283	44	189	0	95	38	382	0	9	2,342
South Dublin	13,007	8,922	<i>in column (i)</i>	5,848	11	986	0	759	0	358	0	3,140	33,031
Tipperary JLC	636	6,464	0	0	0	660	0	262	0	299	0	0	8,321
Waterford	1,668	475	0	856	0	308	0	103	60	303	0	18	3,791
Westmeath	1,485	170	0	2,119	289	76	0	75	2,520	550	0	0	7,284
Wexford	1,331	8	2	646	93	31	0	20	1,700	50	1	0	3,882
Wicklow	2,096	1,402	<i>in column (i)</i>	2,255	0	90	0	548	0	60	0	0	6,451
Total: 28	67,530	61,519	3,806	47,374	12,253	14,695	2	4,712	28,247	6,165	1,520	6,783	254,606
<i>City Councils:</i>													
Cork	16,376	4,686	0	9,457	2,657	2,358	0	131	0	250	0	0	35,915
Dublin	4,811	29,695	0	28,787	376	5,343	0	168	0	312	843	18,911	89,246
Limerick	3,680	1,880	0	2,024	660	72	0	112	0	0	0	0	8,428
Waterford	4,122	1,712	0	1,751	0	1,378	67	233	343	290	0	229	10,125
Total: 4	28,989	37,973	0	42,019	3,693	9,151	67	644	343	852	843	19,140	143,714
Total: 32	96,519	99,492	3,806	89,393	15,946	23,846	69	5,356	28,590	7,017	2,363	25,923	398,320



Public Library Statistics, 2002. Table 4.2: COLLECTIONS - Multimedia - Additions and withdrawals														
	(xiv)	(xv)	(xvi)	(xvii)	(xviii)	(xix)	(xx)	(xxi)	(xxii)	(xxiii)	(xxiv)	(xxv)	(xxvi)	(xxvii)
	MULTIMEDIA ITEMS ADDED TO STOCK, 2002													WITHDRAWALS
AUTHORITY	Sound recordings	Spoken word	Talking	Micro-	Videos	Films	Computer	Photo-	Maps	Art	Other			2002
	<i>Discs</i>	<i>Tapes</i>	cassettes	books	form sets		Software	graphic					TOTAL	TOTAL
<i>County Councils:</i>														
Carlow	10	0	0	386	24	0	0	**	0	0	0	**	420	0
Cavan	0	0	204	0	0	36	0	44	**	**	**	0	284	13
Clare	0	0	0	0	0	0	0	0	0	0	0	0	0	0
Cork	0	0	0	2,238	48	0	0	0	288	12	0	0	2,586	0
Donegal	702	0	0	408	0	725	0	0	0	112	0	0	1,947	63
Dún Laoghaire – Rathdown	446	733	0	0	0	27	0	22	0	602	0	70	1,900	0
Fingal	1,397	0	0	1,401	0	574	0	0	0	0	186	526	4,084	608
Galway	0	0	0	826	0	0	0	0	0	0	0	0	826	211
Kerry	0	408	0	120	410	35	0	172	24	0	0	0	1,169	0
Kildare	0	1,032	0	0	0	0	0	0	0	0	0	0	1,032	445
Kilkenny	221	47	5	62	75	40	0	0	0	0	0	14	464	322
Laois	155	60	0	188	0	0	0	0	60	0	0	0	463	36
Leitrim	0	0	0	0	0	0	0	0	0	0	0	0	0	0
Limerick	0	0	460	0	0	0	0	0	0	0	0	0	460	30
Longford	350	0	0	0	0	0	0	0	0	0	0	0	350	145
Louth	440	159	0	0	0	299	0	0	0	0	0	118	1,016	31
Mayo	0	420	0	0	10	285	0	25	172	3	0	55	970	85
Meath	494	0	0	0	0	163	0	0	0	0	0	0	657	0
Monaghan	218	0	0	0	0	0	0	0	0	35	0	0	253	6
Offaly	0	0	0	421	98	160	0	158	45	4	0	0	886	28
Roscommon	373	315	0	0	30	25	0	0	0	0	0	38	781	361
Sligo	2	13	42	490	12	22	0	0	38	1	0	9	629	0
South Dublin	566	1,456	0	1,576	0	69	0	0	0	25	154	2	3,848	558
Tipperary JLC	**	**	**	**	**	**	**	**	**	**	**	**	**	**
Waterford	7	28	0	162	0	22	0	5	32	0	0	0	256	61
Westmeath	198	0	0	427	0	20	0	30	0	0	0	0	675	106
Wexford	218	41	22	585	89	4	0	9	300	5	0	0	1,273	69
Wicklow	18	31	0	209	0	0	0	83	0	0	0	0	341	26
Total: 28	5,815	4,743	733	9,499	796	2,506	0	548	959	799	340	832	27,570	3,204
<i>City Councils:</i>														
Cork	1,981	995	0	5,149	97	523	0	0	0	0	0	0	8,745	4,537
Dublin	0	0	0	1,938	0	1,163	0	0	0	0	0	3,254	6,355	2,629
Limerick	348	7	0	209	0	2	0	22	0	0	0	0	588	36
Waterford	702	36	0	514	0	375	67	146	0	0	0	90	1,930	0
Total: 4	3,031	1,038	0	7,810	97	2,063	67	168	0	0	0	3,344	17,618	7,202
Total: 32	8,846	5,781	733	17,309	893	4,569	67	716	959	799	340	4,176	45,188	10,406

Public Library Statistics, 2002. Table 5: ISSUES										
	(i)	(ii)	(iii)	(iv)	(v)	(vi)	(vii)	(viii)	(ix)	(x)
Authority		BOOK ISSUES		TOTAL	Book issues per head population	MULTIMEDIA ISSUES		TOTAL	TOTAL	Issues
	<i>Adult</i>	<i>Adult</i>	<i>Children's</i>	BOOK		<i>Sound</i>	<i>Other</i>	MULTIMEDIA	ISSUES	per head
	<i>non-fiction</i>	<i>fiction</i>		ISSUES		<i>recordings</i>		ISSUES	<i>(iv) + (viii)</i>	population
County Councils:								<i>(vi) + (vii)</i>		
Carlow	38,308	56,989	47,642	142,939	3.1	3,666	547	4,213	147,152	3.2
Cavan	20,042	36,912	94,736	151,690	2.7	2,259	0	2,259	153,949	2.7
Clare	100,185	161,642	171,189	433,016	4.2	790	0	790	433,806	4.2
Cork	221,328	558,505	442,394	1,222,227	3.8	**	**	0	1,222,227	3.8
Donegal	33,737	71,775	184,603	290,115	2.1	13,756	13,046	26,802	316,917	2.3
Dún Laoghaire- Rathdown	198,481	218,459	233,040	649,980	3.4	50,592	<i>in column (vi)</i>	50,592	700,572	3.7
Fingal	249,608	250,162	250,670	750,440	3.8	76,062	15,515	91,577	842,017	4.3
Galway	83,042	162,005	200,888	445,935	2.1	7,003	0	7,003	452,938	2.2
Kerry	66,245	97,948	153,531	317,724	2.4	0	0	0	317,724	2.4
Kildare	81,020	137,399	224,351	442,770	2.7	18,671	0	18,671	461,441	2.8
Kilkenny	61,733	101,456	107,029	270,218	3.4	9,886	<i>in column (vi)</i>	9,886	280,104	3.5
Laois	32,311	51,249	79,140	162,700	2.8	9,204	1,056	10,260	172,960	2.9
Leitrim	11,553	22,258	42,652	76,463	3.0	**	**	**	76,463	3.0
Limerick	71,120	122,587	172,126	365,833	3.0	961	0	961	366,794	3.0
Longford	21,232	41,214	33,550	95,996	3.1	1,575	<i>in column (vi)</i>	1,575	97,571	3.1
Louth	73,040	103,747	109,531	286,318	2.8	9,172	0	9,172	295,490	2.9
Mayo	117,334	179,873	303,298	600,505	5.1	22,576	8,546	31,122	631,627	5.4
Meath	37,482	76,010	95,902	209,394	1.6		<i>counted with books</i>		209,394	1.6
Monaghan	18,052	29,040	51,641	98,733	1.9	2,562	3,808	6,370	105,103	2.0
Offaly	31,356	58,659	92,270	182,285	2.9	3,656	6,585	10,241	192,526	3.0
Roscommon	27,530	54,558	53,999	136,087	2.5	5,376	<i>in column (vi)</i>	5,376	141,463	2.6
Sligo	32,435	47,659	55,319	135,413	2.3	**	**	0	135,413	2.3
South Dublin	285,434	247,406	347,160	880,000	3.7	98,627	3,461	102,088	982,088	4.1
Tipperary JLC	67,958	144,644	162,861	375,463	2.7	8,653	<i>in column (vi)</i>	8,653	384,116	2.7
Waterford	27,142	55,979	112,745	195,866	3.4	17,450	306	17,756	213,622	3.8
Westmeath	41,945	67,409	89,078	198,432	2.8	9,328	<i>in column (vi)</i>	9,328	207,760	2.9
Wexford	34,837	89,462	116,376	240,675	2.1	3,516	<i>in column (vi)</i>	3,516	244,191	2.1
Wicklow	93,320	154,041	126,586	373,947	3.3	16,830	<i>in column (vi)</i>	16,830	390,777	3.4
Total: 28	2,177,810	3,399,047	4,154,307	9,731,164	3.0	392,171	52,870	445,041	10,176,205	3.2
City Councils:										
Cork	189,828	273,168	214,940	677,936	5.5	84,091	80	84,171	762,107	6.2
Dublin	785,406	826,826	523,686	2,135,918	4.3	196,554	65,970	262,524	2,398,442	4.8
Limerick	50,292	79,104	57,369	186,765	3.5	14,359	0	14,359	201,124	3.7
Waterford	53,749	67,965	76,997	198,711	4.5	25,001	6,919	31,920	230,631	5.2
Total: 4	1,079,275	1,247,063	872,992	3,199,330	4.5	320,005	72,969	392,974	3,592,304	5.0
TOTAL: 32	3,257,085	4,646,110	5,027,299	12,930,494	3.3	712,176	125,839	838,015	13,768,509	3.5

Public Library Statistics, 2002. Table 5.1: REGISTERED MEMBERSHIP												
	(xii)	(xi)	(xiii)			(xiv)	(xvi)	(xv)	(xvii)	(xix)	(xviii)	(xx)
Authority	REGISTERED MEMBERSHIP			<i>Child</i>	<i>Adult</i>	<i>as % of</i>	Number of items allowed on		Loan Period (in weeks)	CHARGES		How
	<i>Children</i>	<i>Adult</i>	<i>TOTAL</i>	Membership as % of		<i>total resident</i>	loan at any one time			<i>Children</i>	<i>Adult</i>	often
				0-14 pop.	15+ pop	<i>population</i>	<i>Children</i>	<i>Adult</i>				registered?
<i>County Councils:</i>												
Carlow	3,123	5,575	8,698	31.0	15.5	18.9	2	4	3	Free	6.35 p.a.	1Y
Cavan	4,627	4,651	9,278	35.9	10.7	16.4	3	3	3	Free	Free	1Y
Clare	6,356	11,040	17,396	27.8	13.7	16.8	4	6	4	Free	4.40 p.a.	1Y
Cork	20,667	28,034	48,701	28.4	11.1	15.0	2	4	2	0.50 p.a.	2.50 p.a.	1Y
Donegal	15,017	13,615	28,632	46.6	12.9	20.8	12	12	3	Free	Free	1Y
Dún Laoghaire-Rathdown	13,256	36,528	49,784	36.1	23.6	26.0	12	12	3	Free	Free	3Y
Fingal	32,901	57,441	90,342	73.8	37.8	46.0	3	6	3	Free	Free	3Y
Galway	12,625	16,146	28,771	29.0	9.8	13.8	2	3	3	Free	5.00 p.a.	1Y
Kerry	13,264	27,132	40,396	107.8	25.6	42.2	3	4	2	Free	12.00 p.a.+	3Y
Kildare	13,529	9,781	23,310	34.8	7.8	14.2	8	8	3	Free	6.00 p.a.	1Y
Kilkenny	4,474	3,920	8,394	24.7	6.3	10.4	3	6	3	Free	15.00 p.a.	1Y
Laois	3,549	4,006	7,555	26.0	8.9	12.9	4	4	3	Free	10.00 p.a.	1Y
Leitrim	1,600	1,200	2,800	29.5	5.9	10.9	<i>No limit</i>	<i>No limit</i>	4	Free	<i>0.25 pi</i>	<i>No Reg.</i>
Limerick	7,424	10,590	18,014	29.3	11.0	14.9	3	3	2	Free	Free	1Y
Longford	3,211	3,353	6,564	46.0	13.9	21.1	4	6	3	Free	2.50 p.a.	1Y
Louth	4,761	7,748	12,509	20.6	9.8	12.3	3	3	3	Free	6.35 p.a.	1Y
Mayo	12,943	11,876	24,819	51.2	12.9	21.1	5	5	3	Free	3.00 p.a.	1Y
Meath	5,356	6,213	11,569	16.9	6.1	8.6	2	3	2	Free	Free	1Y
Monaghan	2,500	3,139	5,639	21.2	7.7	10.7	2	2	2	Free	3.00 p.a.	1Y
Offaly	5,697	3,596	9,293	38.5	7.4	14.6	4	6	4	Free	10.00 p.a.	1Y
Roscommon	5,464	3,548	9,012	47.9	8.4	16.8	2	3	2	Free	3.80 p.a.	1Y
Sligo	2,405	4,355	6,760	19.9	9.4	11.6	3	3	3	Free	Free	1Y
South Dublin	18,413	36,031	54,444	34.3	19.5	22.8	6	10	3	Free	Free	3Y
Tipperary JLC	7,791	7,191	14,982	4.1	5.4	5.1	4	4	3	Free	5.00 p.a.	1Y
Waterford	6,257	5,120	11,377	49.3	11.6	20.0	3	3	2	Free	7.62 p.a.	1Y
Westmeath	4,511	5,884	10,395	27.4	10.6	14.5	3	4	3	Free	6.35 p.a.	1Y
Wexford	7,379	8,737	16,116	27.8	9.7	13.8	6	10	3	Free	Free	4Y
Wicklow	6,626	13,578	20,204	25.7	15.3	17.6	3	5	3	Free	Free	1Y
Total: 28	245,726	350,028	595,754	33.9	14.0	18.4						
<i>City Councils:</i>												
Cork	8,086	12,144	20,230	38.3	11.9	16.4	4	6	2	Free	12.50 p.a.	1Y
Dublin	38,572	130,560	169,132	48.1	31.4	34.1	6	8	3	Free	Free	3Y
Limerick	2,265	4,595	6,860	21.6	10.6	12.7	3	6	2	Free	10.00 p.a.	1Y
Waterford	4,466	4,984	9,450	49.5	14.0	21.2	5	5	3	Free	6.00 p.a.	1Y
Total: 4	53,389	152,283	205,672	44.2	25.5	28.7						
TOTAL: 32	299,115	502,311	801,426	36.1	16.3	20.5						

Public Library Statistics, 2002 Table 6: SERVICE POINTS								
	(i)	(ii)	(iii)	(iv)	(v)	(vi)	(vii)	(viii)
	B R A N C H E S (hours open per week)						Total hours open to the public per week	Average No. hours per week
Authority	Over 40	30-39	20-29	10-19	Under 10	TOTAL BRANCHES		
<i>County Councils:</i>								
Carlow	1	0	2	0	0	3	91.0	30.0
Cavan	2	1	0	4	5	12	199.0	16.6
Clare	5	4	1	6	0	16	460.5	28.8
Cork	9	6	5	6	1	27	794.5	29.4
Donegal	2	5	1	4	5	17	393.0	23.1
Dún Laoghaire –Rathdown	2	6	1	1	0	10	322.5	32.3
Fingal	2	7	1	0	1	11	359.5	32.7
Galway	1	7	0	13	4	25	476.0	19.0
Kerry	3	6	0	0	0	9	344.0	38.2
Kildare	1	5	1	7	2	16	324.5	20.3
Kilkenny	0	3	2	2	0	7	186.5	26.6
Laois	0	1	1	4	7	13	219.5	16.9
Leitrim	1	3	1	1	2	8	201.0	25.1
Limerick	2	2	3	11	5	23	401.5	17.5
Longford	1	0	2	3	0	6	151.0	25.2
Louth	0	2	0	3	0	5	117.0	23.4
Mayo	0	5	8	1	0	14	372.0	26.6
Meath	0	1	5	4	2	12	223.5	18.6
Monaghan	0	1	1	3	0	5	95.0	19.0
Offaly	0	1	3	4	1	9	178.0	19.8
Roscommon	0	3	3	0	1	7	167.0	23.9
Sligo	0	1	0	1	2	4	58.0	14.5
South Dublin	5	0	1	1	0	7	299.5	42.8
Tipperary JLC	6	1	2	2	2	13	397.75	30.6
Waterford	0	2	1	3	1	7	167.5	23.9
Westmeath	2	0	0	4	0	6	144.0	24.0
Wexford	0	1	2	1	1	5	101.25	20.3
Wicklow	0	3	2	5	3	13	227.0	17.5
Total: 28	45	77	49	94	45	310	7,471.50	24.1
<i>City Councils:</i>								
Cork	1	5	0	0	0	6	215.0	35.8
Dublin	13	10	1	0	0	24	1030.25	42.9
Limerick	1	0	1	0	0	2	80.5	40.3
Waterford	2	0	1	0	0	3	120.0	40.0
Total: 4	17	15	3	0	0	35	1,445.75	41.3
TOTAL: 32	62	92	52	94	45	345	8,917.25	25.8

Public Library Statistics, 2002 Table 6.1 Service Points Continued											
			(ix)		(x)	(xi)	(xii)	(xiii)	(xiv)	(xv)	(vi)-(x)
	No. of computerised service points				CENTRES	OTHER	MOBILE LIBRARIES				TOTAL NO OF SERVICE POINTS
	Branches with automated systems	Number of OPACs	Branches with Internet access	No. of public Internet terminals		SERVICE POINTS	No. of units	Hours	per schedule of x weeks	Number of stops	
County Councils											
Carlow	1	3	3	10	0	0	0				3
Cavan	2	0	6	12	2	0	0				14
Clare	16	101	16	94	0	0	0				16
Cork	8	0	26	54	0	0	6		2	570	33
Donegal	9	14	10	62	3	2	1	16	2	37	23
Dún Laoghaire - Rathdown	9	16	9	39	0	0	0				10
Fingal	11	20	11	72	14	28	4	20	1	47	12
Galway	4	16	25	70	3	0	1	17	2	66	29
Kerry	9	17	9	36	17	10	1	20	2	37	37
Kildare	6	6	16	44	1	0	1	20	2	30	18
Kilkenny	4	0	7	23	3	3	1	28	3	60	14
Laois	1	2	10	21							13
Leitrim	0	0	8	15	0	0	0				8
Limerick	5	12	12	30	3	0	2	27	2	63	28
Longford	3	12	6	12	0	1	0				7
Louth	5	3	5	27	0	0	1	32.75	2	43	6
Mayo	7	22	13	71	0	8	1	**	2	50	23
Meath	4	6	12	29	4	0	0				16
Monaghan	0	0	5	14	0	0	1	21	2	45	6
Offaly	1	1	9	32	2	0	0				11
Roscommon	1	4	6	20	0	7	0				14
Sligo	4	4	4	22	2	0	0				6
South Dublin	7	11	5	55	0	0	4	51	4	149	11
Tipperary JLC	2	2	13	40	0	0	0				13
Waterford	7	29	7	29	0	0	0				7
Westmeath	4	6	6	22	0	2	0				8
Wexford	3	2	5	42	1	0	2	23	2	107	8
Wicklow	3	3	13	29	1	0	0				14
Total: 28	136	312	277	1,026	56	61	26			1,304	453
City Councils											
Cork	6	17	6	56	0	0	1	13	1	2	7
Dublin	24	40	24	103	24	530	2	45		18	580
Limerick	2	2	2	12	3	1	0	0	0	0	6
Waterford	3	17	2	17	0	0	0				3
Total: 4	35	76	34	188	27	531	3			20	596
TOTAL: 32	171	388	311	1,214	83	592	29			1,324	1,049

Public Library Statistics, 2002. Table 6.2: Agency Services												
	(i)	(ii)	(iii)	(iv)	(v)	(vi)	(vii)	(viii)	(ix)	(x)	(xi)	(xii)
	Number of establishments served			Gross expenditure			No. of staff employed			No. of volumes on loan		
	Prisons	Hospitals	TOTAL	Prisons	Hospitals	TOTAL	Prisons	Hospitals	TOTAL	Prisons	Hospitals	TOTAL
<b>County Councils:</b>												
Carlow	0	0	0	0	0	0	0	0	0	0	0	0
Cavan	1	0	1	7,860	0	7,860	0	1	1	1,624	0	1,624
Clare	0	0	0	0	0	0	0	0	0	0	0	0
Cork	0	0	0	0	0	0	0	0	0	0	0	0
Donegal	0	0	0	0	0	0	0	0	0	0	0	0
Dún Laoghaire - Rathdown	0	0	0	0	0	0	0	0	0	0	0	0
Fingal	0	0	0	0	0	0	0	0	0	0	0	0
Galway	0	0	0	0	0	0	0	0	0	0	0	0
Kerry	0	0	0	0	0	0	0	0	0	0	0	0
Kildare	0	0	0	0	0	0	0	0	0	0	0	0
Kilkenny	0	0	0	0	0	0	0	0	0	0	0	0
Laois	0	0	0	0	0	0	0	0	0	0	0	0
Leitrim	0	0	0	0	0	0	0	0	0	0	0	0
Limerick	0	0	0	0	0	0	0	0	0	0	0	0
Longford	0	0	0	0	0	0	0	0	0	0	0	0
Louth	0	6	6	0	0	0	0	0	0	0	500	500
Mayo	0	0	0	0	0	0	0	0	0	0	0	0
Meath	0	0	0	0	0	0	0	0	0	0	0	0
Monaghan	0	0	0	0	0	0	0	0	0	0	0	0
Offaly	0	0	0	0	0	0	0	0	0	0	0	0
Roscommon	0	0	0	0	0	0	0	0	0	0	0	0
Sligo	0	0	0	0	0	0	0	0	0	0	0	0
South Dublin	0	0	0	0	0	0	0	0	0	0	0	0
Tipperary JLC	0	0	0	0	0	0	0	0	0	0	0	0
Waterford	0	0	0	0	0	0	0	0	0	0	0	0
Westmeath	0	0	0	0	0	0	0	0	0	0	0	0
Wexford	0	0	0	0	0	0	0	0	0	0	0	0
Wicklow	1	0	1	11,270	0	11,270	0	0	0	0	0	0
Total: 28	2	6	8	19,130	0	19,130	0	1	1	1,624	500	2,124
<b>City Councils:</b>												
Cork	1	0	1	1,900	0	1,900	0	0.2	0.2	0	0	0
Dublin	8	0	8	131,487	0	131,487	0	4	4	0	0	0
Limerick	0	0	0	0	0	0	0	0	0	0	0	0
Waterford	0	0	0	0	0	0	0	0	0	0	0	0
Total: 4	9	0	9	133,387	0	133,387	0	4	4	0	0	0
<b>TOTAL: 32</b>	<b>11</b>	<b>6</b>	<b>17</b>	<b>152,517</b>	<b>0</b>	<b>152,517</b>	<b>0</b>	<b>5.20</b>	<b>5.20</b>	<b>1,624</b>	<b>500</b>	<b>2,124</b>

PUBLIC LIBRARY STATISTICS, 2002. Table 7: SERVICES TO SCHOOLS - Number of schools and pupils served.												
	(i)	(ii)	(iii)	(iv)	(v)	(vi)	(vii)	(viii)	(ix)	(x)	(xi)	(xii)
	NUMBER OF SCHOOLS SERVED						PUPIL POPULATION SERVED					
Authority	Primary	Secondary	Vocational	Comprehensive	Community	TOTAL	Primary	Secondary	Vocational	Comprehensive	Community	TOTAL
<b>County Councils:</b>												
Carlow	41	0	0	0	0	41	5,478	0	0	0	0	5,478
Cavan	80	0	0	0	0	80	7,388	0	0	0	0	7,388
Clare	122	0	0	0	0	122	11,652	0	0	0	0	11,652
Cork	0	0	0	0	0	0	0	0	0	0	0	0
Donegal	178	0	0	0	0	178	17,087	0	0	0	0	17,087
Dún Laoghaire - Rathdown	65	0	0	0	0	65	16,673	0	0	0	0	16,673
Fingal	81	0	0	0	0	81	22,362	0	0	0	0	22,362
Galway	231	0	0	0	0	231	23,391	0	0	0	0	23,391
Kerry	148	0	0	0	0	148	14,534	0	0	0	0	14,534
Kildare	91	0	0	0	0	91	20,027	0	0	0	0	20,027
Kilkenny	77	4	0	0	0	81	9,404	1,600	0	0	0	11,004
Laois	70	0	0	0	0	70	6,777	0	0	0	0	6,777
Leitrim	41	0	0	1	0	42	2,908	0	0	0	350	3,258
Limerick	116	0	0	0	0	116	13,391	0	0	0	0	13,391
Longford	41	0	0	0	0	41	3,949	0	0	0	0	3,949
Louth	76	0	0	0	0	76	12,099	0	0	0	0	12,099
Mayo	187	0	0	0	0	187	16,569	0	0	0	0	16,569
Meath	104	4	6	0	2	116	16,111	2,037	1,307	0	1,398	20,853
Monaghan	64	0	0	0	0	64	6,456	0	0	0	0	6,456
Offaly	67	0	0	0	0	67	8,275	0	0	0	0	8,275
Roscommon	95	4	2	0	1	102	6,164	3,216	496	0	562	10,438
Sligo	69	0	0	0	0	69	6,427	0	0	0	0	6,427
South Dublin	96	0	0	0	0	96	27,544	0	0 0	0	0	27,544
Tipperary JLC	144	0	0	0	0	144	16,700	0	0	0	0	16,700
Waterford	57	0	0	0	0	57	6,415	0	0	0	0	6,415
Westmeath	75	0	0	0	0	75	9,099	0	0 0	0	0	9,099
Wexford	105	0	0	0	0	105	14,624	0	0	0	0	14,624
Wicklow	85	0	0	0	0	85	13,871	0	0	0	0	13,871
Total: 28	2,606	12	8	1	3	2,630	335,375	6,853	1,803	0	2,310	346,341
<b>City Councils:</b>												
Cork	60	0	0	0	0	60	15,256	0	0	0	0	15,256
Dublin	225	0	0	0	0	225	45,067	0	0	0	0	45,067
Limerick	32	0	0	0	0	32	6,932	0	0	0	0	6,932
Waterford	23	0	0	0	0	23	5,657	0	0	0	0	5,657
Total: 4	340	0	0	0	0	340	72,912	0	0	0	0	72,912
<b>TOTAL:32</b>	<b>2,946</b>	<b>12</b>	<b>8</b>	<b>1</b>	<b>2</b>	<b>2,970</b>	<b>408,287</b>	<b>6,853</b>	<b>1,803</b>	<b>0</b>	<b>2,310</b>	<b>419,253</b>

PUBLIC LIBRARY STATISTICS, 2002. Table 7.1: SERVICES TO SCHOOLS - Stock and issues								Nos.
	(xiii)	(xiv)	(xv)	(xvi)	(xvii)	(xviii)	(xix)	(xx)
	S T O C K			Items per head of pupil pop.	I S S U E S			Issues per head of pupil pop.
Authority	<i>Books</i>	<i>Multimedia</i>	TOTAL		<i>Books</i>	<i>Multimedia</i>	TOTAL	
<i>County Councils:</i>								
Carlow	6,450	<i>in column xiii</i>	6,450	1.2			**	**
Cavan	23,784	0	23,784	3.2	10,019	0	10,019	1.4
Clare	<i>counted</i>	<i>with books</i>		**	**	**	**	**
Cork	0	0	0	**	0	0	0	0.0
Donegal	93,427	0	93,427	5.5	**	**	**	**
Dún Laoghaire - Rathdown	93,162	<i>in column xiii</i>	93,162	5.6	14,087	<i>in column (xvii)</i>	14,087	0.8
Fingal	28,252	970	29,222	1.3	16,921	403	17,324	0.8
Galway	110,150	<i>in column xiii</i>	110,150	4.7	**	**	**	**
Kerry	133,350	921	134,271	9.2	400,050	0	400,050	27.5
Kildare	30,000	1,700	31,700	1.6	32,500	0	32,500	1.6
Kilkenny	62,500	1,600	64,100	5.8	160,000	10,000	170,000	15.4
Laois	51,751	**	51,751	7.6	**	**	**	**
Leitrim	16,000	**	16,000	4.9	**	**	**	**
Limerick	**	**	**	**	**	**	**	**
Longford	47,393	<i>in column xiii</i>	47,393	12.0	27,415	<i>in column (xvii)</i>	27,415	6.9
Louth	32,300	0	32,300	2.7	37,000	0	37,000	3.1
Mayo	152,897	4,111	157,008	9.5	51,143	3,541	54,684	3.3
Meath	88,836	<i>in column xiii</i>	88,836	4.3	**	**	**	**
Monaghan	17,926	**	17,926	2.8	13,574	**	13,574	2.1
Offaly	52,475	0	52,475	6.3	2,397	0	2,397	0.3
Roscommon	32,136	**	32,136	3.1	246,560	**	246,560	23.6
Sligo	15,000	0	15,000	2.3	**	**	**	**
South Dublin	80,970	2,201	83,171	3.0	26,577	248	26,825	1.0
Tipperary JLC	80,625	**	80,625	4.8	**	**	**	**
Waterford	27,336	26	27,362	4.3	37,160	14	37,174	5.8
Westmeath	40,230	0	40,230	4.4	22,249	0	22,249	2.4
Wexford	199,519	**	199,519	13.6	not recorded	not recorded	**	**
Wicklow	41,957	**	41,957	3.0	not recorded	not recorded	**	**
Total: 28	1,558,426	11,529	1,569,955					
<i>City Councils:</i>								
Cork	145,415	0	145,415	9.5	8,177	0	8,177	0.5
Dublin	218,755	547	219,302	4.9	901,340	**	901,340	20.0
Limerick	80,621	0	80,621	11.6	69,320	0	69,320	10.0
Waterford	**	**	**	**	**	**	**	**
Total: 4	444,791	547	445,338					
TOTAL:32	2,003,217	12,076	2,015,293					



## Notes on the 2002 returns

A small number of authorities are unable to supply detailed data as requested). An Chomhairle has used other data at its disposal to apply weightings to these figures in order to provide a more accurate picture. The weightings relate mainly to, collections, issues and membership figures. All data substituted by An Chomhairle has been printed in green.

*Table 1: Income* remains the same as for previous years. Details of capital income as notified by the contributing authorities is contained on Table 2.2.

Grants from the Department of the Environment, Heritage & Local Government made have been designated as Capital for the purposes of this publication. Where authorities omitted receipt of these funds, the amount has been supplied by An Chomhairle Leabharlanna (see Table 2.2.).

*Table 3: Staffing* has been simplified to make the table more easily readable. It no longer contains details of grades by location (headquarters, branches or other service points). This information is still available on request from An Chomhairle.

Similarly, *Table 4: Collections - books and serials* and *Table 4.2: Collections - non-book materials* no longer categorizes withdrawn stock items. They now give the total figure per authority. The full set of information is still available on request from An Chomhairle.

*Table 5.1: Registered membership figures.* A change in definition from 'registered' to 'active' borrower (i.e. someone who had borrowed at least one item during the period January 1st – December 31st) resulted in a reported decrease in membership from some authorities. This decrease was particularly marked in those authorities with a three year registration cycle. Increased issues and the apparent decline in membership suggests that the file of 'registered' borrowers was inflated due to the presence of a large number of users who do not borrow.

*Table 6: Service points* includes data on the number of service points with online public access catalogues (Opacs) and Internet access. In both cases, the number of available terminals is also given.

This Table also gives details of the overall, planned opening hours per week for the branch libraries.

*Table 6.1: Agency services* contains information on services provided by public library authorities to other organisations, usually on a cost recovery basis.

*Table 7* details library services to schools as provided by the library authority.

# Appendix 1: Population tables from 1996 and 2002 Censuses

AUTHORITY	1996			2002			% change on 1996
	Population 0-14	Population 15+	Total population	Population 0-14	Population 15+	Total population	
<i>Counties</i>							
Carlow	10,284	31,332	41,616	10,063	35,951	46,014	10.6
Cavan	13,445	39,499	52,944	12,891	43,655	56,546	6.8
Clare	23,465	70,541	94,006	22,874	80,403	103,277	9.9
Cork	72,439	220,884	293,323	72,697	252,070	324,767	10.7
Donegal	33,180	96,814	129,994	32,255	105,320	137,575	5.8
Dún Laoghaire-Rathdown	39,617	150,382	189,999	36,757	155,035	191,792	0.9
Fingal	45,752	121,931	167,683	44,592	151,821	196,413	17.1
Galway	44,621	144,233	188,854	43,478	165,599	209,077	10.7
Kerry	29,832	96,298	126,130	26,714	105,813	132,527	5.1
Kildare	35,772	99,220	134,992	38,909	125,035	163,944	21.4
Kilkenny	18,640	56,696	75,336	18,079	62,260	80,339	6.6
Laois	13,623	39,322	52,945	13,656	45,118	58,774	11.0
Leitrim	5,847	19,210	25,057	5,422	20,377	25,799	3.0
Limerick	27,259	85,744	113,003	25,303	95,978	121,281	7.3
Longford	7,512	22,654	30,166	6,975	24,093	31,068	3.0
Louth	22,424	69,742	92,166	23,075	78,746	101,821	10.5
Mayo	27,438	84,086	111,524	25,281	92,165	117,446	5.3
Meath	28,607	81,125	109,732	31,666	102,339	134,005	22.1
Monaghan	13,200	38,113	51,313	11,774	40,819	52,593	2.5
Offaly	15,018	44,099	59,117	14,799	48,864	63,663	7.7
Roscommon	12,307	39,668	51,975	11,417	42,357	53,774	3.5
Sligo	12,927	42,894	55,821	12,089	46,111	58,200	4.3
South Dublin	59,294	159,434	218,728	53,671	185,164	238,835	9.2
Tipperary JLC	32,537	100,998	133,535	30,707	109,424	140,131	4.9
Waterford	12,667	39,473	52,140	12,700	44,252	56,952	9.2
Westmeath	15,745	47,569	63,314	16,444	55,414	71,858	13.5
Wexford	25,884	78,487	104,371	26,515	90,081	116,596	11.7
Wicklow	25,585	77,098	102,683	25,826	88,850	114,676	10.6
Total: 28	724,921	2,197,546	2,922,467	706,629	2,493,114	3,199,743	9.5
<i>Cities</i>							
Cork	25,735	101,452	127,187	21,135	101,927	123,062	-3.2
Dublin	88,031	393,823	481,854	80,172	415,609	495,781	2.9
Limerick	11,177	40,862	52,039	10,475	43,548	54,023	3.8
Waterford	9,560	32,980	42,540	9,017	35,577	44,594	4.8
Total: 4	134,503	569,117	703,620	120,799	596,661	717,460	2.0
<b>TOTAL: 32</b>	<b>859,424</b>	<b>2,766,663</b>	<b>3,626,087</b>	<b>827,428</b>	<b>3,089,775</b>	<b>3,917,203</b>	<b>8.0</b>