



**An Chomhairle Leabharlanna** was established by the *Public Libraries Act, 1947*.  
The functions of the Council, as outlined in the *Local Government Act, 2001* are:

- to provide advice and assistance to local authorities in relation to the improvement of the public library service
- to make such recommendations to the Minister in relation to the public library service as it sees fit
- to maintain and operate the central library established under Section 2 of the *Public Libraries Act, 1947 (No.40 of 1947)*
- to promote and facilitate library co-operation

Statistical series issued by An Chomhairle Leabharlanna:

*Public Library Authorities Annual Estimates of Expenditure*

*Public Library Authority Statistics - Actuals.* (Annual)

*Public Library Statistics: an Analysis of Trends in relation to Irish Public Libraries.*

Statistical data on Irish public libraries also appears in:

*Statistical Abstract / Central Statistics Office.* - Dublin: Stationery Office (Annual)

*Public Library Statistics - Actuals.* - London: CIPFA, (Annual)

*Public Library Statistics -Estimates.* - London: CIPFA, (Annual)



# CONTENTS

## Public Library Authority Actuals 2004

<b>Introduction</b>	<b>1-2</b>
<b>Comparison between 2003 and 2004</b>	<b>3-4</b>
<b>Summary 2000-2004</b>	<b>5-7</b>

## Charts

1: Expenditure under individual budget headings shown as a % of total expenditure, 2003 and 2004	3
2: Recurrent income, 2000-2004	5
3: Total local authority expenditure, 2000-2004	5
4: Expenditure on stock, 2000-2004	5
5: Books in stock, 2000-2004	6
6: Additions and withdrawals, 2000-2004	6
7: Loans 2000-2004	6
8: Loans by stock category, 2000-2004	6
9: Registered membership, 2000-2004	7
10: Registered membership as a % of the population by age	7
11: Comparison of opening hours, 2000-2004	7
12: Service points by hours open per week (%)	7

## Summary tables 2000-2004 8-10

1: Income: recurrent and capital	8
1.1: Exchequer capital allocations	8
2: Expenditure: recurrent and capital	8
3: Staffing	8
4: Collections	9
5: Issues	9
5.1: Registered membership	9
6: Service points	9
7: Services to schools	10
7.1: National primary school pupil population	10

## Tables 2004

1: Income	11
1.1 Capital Income	12
1.2: Exchequer capital grant allocations	13
2: Expenditure - Salaries and stock	14
2.1: Expenditure( <i>continued</i> ) - Premises, transport, etc.	15
2.2: Capital Expenditure	16
3: Staffing	17
3.1: Staffing - Dún Laoghaire Rathdown County	18
3.2: Staffing - Fingal County	18
3.3: Staffing - South Dublin County	18
3.4: Staffing - Dublin City	18
4: Collections - Books and serials	19
4.1: Collections - Multimedia	20
4.2: Collections - Multimedia - additions and withdrawals	21
5: Issues	22
5.1: Registered membership	23
6: Service points	24
6.1 Service points( <i>continued</i> )	25
6.2: Agency services	26
7: Services to schools - Number of schools and pupils served	27
7.1: Services to schools - Stock and issues.	28
Notes on the 2004 returns	29
<i>Appendix 1: Population Tables from the 2002 Census</i>	30





## INTRODUCTION

*Branching Out*, the government's policy document for the future of the public library service, was launched in 1998. This report on library authority statistical returns for 2004 provides a snapshot of the previous five years of the *Branching Out* programme of development.

The improvements in public library services over the period are clear from the report. Through increased expenditure the users have availed of library services with longer hours, more stock, higher volumes of lending and access to expert staff in more service points.

The main highlights since 2000 are:

- Recurrent income increased by 55% from €57.8 million to €89.7 million in 2004
- Recurrent expenditure increased by 55% from €57.4 million to €88.8 million giving a five year total of €369 million
- Capital expenditure reported by public library authorities increased by 61% from €9.5 million to €15.3 million giving a five year total of €62.7 million
- Total expenditure (recurrent and capital) increased by 55% from €66.9 million to €104 million giving a five year total of €431.7 million
- Current expenditure on stock increased by 32% from €9.2 million to €12.2 million. This represents a five year total of €54.5 million
- Library stock increased overall by 12.4% to a total of 13.4 million items
- Multimedia stock increased by 16% from 0.36 million to 0.42 million
- Collections of books have increased by 12% from 11.6 million to 13 million
- 405,703 items were withdrawn in 2004
- Total loans (books + multimedia) recorded an overall increase of 20% from 12.27 million to 14.8 million
- Issues per capita increased from 3.4 to 3.8 per annum
- Regular library users increased their annual borrowing from 14 to 19 items per person per annum



- The number of branch libraries in Ireland increased from 331 to 353
- The number of hours branch libraries are open to the public per week has increased by 19% (from 8,050 to 9,605)
- The number of branch libraries with public access Internet points increased by 252 to 320
- The number of public access Internet terminals increased from 892 to 1,397
- Overall staffing levels rose from 1,392 to 1,631

An Chomhairle thanks the Mayors, Members, County and City Managers and County and City Librarians and staff of the public library authorities for their continuing support and for their assistance in compiling these figures.

Norma McDermott  
Director



## COMPARISON BETWEEN 2003 AND 2004

Irish local authority public library service statistics record a continuing upward trend of service provision in the communities they serve.

An Chomhairle Leabharlanna acknowledges the continuing support of library authorities in delivering a better service and the value of the capital grants programme initiated by the Minister for the Environment, Heritage and Local Government.

In national terms and in comparison with the previous year, the returns from public library authorities for 2004 reflect an upturn in most areas of activity.

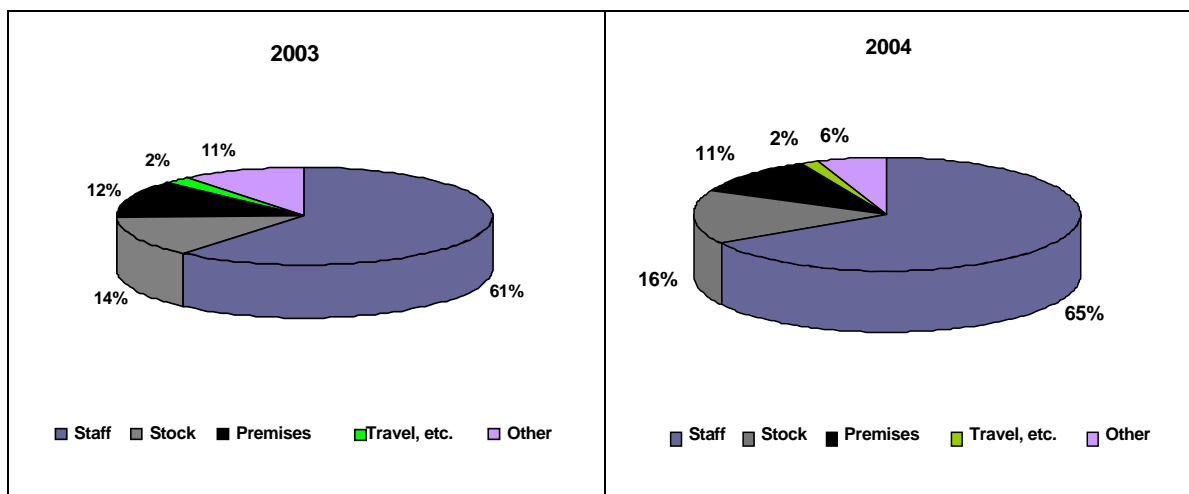
The major changes are as follows:

### Income

- Recurrent income increased by 10% from €81,417,857 to €89,710,317
- Capital income reported by public library authorities decreased by 28% from €10,696,233 to €7,738,614
- Combined recurrent and capital incomes reported by local authorities increased by 6% from €92,114,090. to €97,448,931
- This represents an increase in the per capita figure from €23.52 to €24.88 for total income

### Expenditure

- Recurrent expenditure has risen by 10.6% from €80,304,838 to €88,821,984



**Chart 1:** Expenditure under individual budget headings shown as a percentage of total expenditure, 2003 and 2004

*Note; Travel, etc. includes subsistence costs; 'Other' includes binding and computing costs, leasing and loan repayments, and local authority contribution to An Chomhairle Leabharlanna.*

- Expenditure on staff rose by 7% from €49.1 million to €52.5 million
- Expenditure on stock has risen by 12% from €10,865,054 to €12,175,774 or from €2.77 per head of population to €3.11
- Expenditure on stock in 2004 accounted nationally for 14% of the overall budget
- Capital expenditure in public library authorities increased by 14% from €13,410,572 to €15,313,075



- The Department of the Environment, Heritage and Local Government provided capital grants totalling €10.3 million which included €8.5 million for library buildings, mobile libraries and delivery vans, €0.7 million subsidy on leases, and €0.9 million from the Information Society Fund for service development initiatives
- Total local authority expenditure (recurrent and capital) increased by 11% from €93,715,410 to €104,135,059
- Total per capita expenditure increased from €23.92 to €26.58

### **Collections**

Figures for 2004 recorded an increased collection in material in alternative formats (e.g. multimedia) and in the number of print based materials being added to stock, as compared with 2003:

- Public libraries collectively held just over 13.4 million items of stock
- 1,005,631 new items of stock were added during 2004
- Multimedia additions rose by 3% from 51,805 to 53,291
- 952,340 books were added to stock – an increase of 7% over the 2003 figure of 891,751

### **Issues**

- Total items loaned increased by 3% from 14,297,145 to 14,765,175
- Multimedia issues increased by 17% from 996,056 to 1,163,130
- Book issues increased by 2% from 13,301,089 to 13,602,045

### **Membership**

- Registered membership decreased by 5% from 833,968 to 792,420
- The percentage of the population registered as members of the public library service fell from 21.3% to 20.2%.
- Children's membership has risen by 1.7% from 287,676 to 292,610
- Adult membership decreased by 8.5% from 546,292 to 499,810  
*The decrease in the number of registered users has been influenced by a change in the definition of user – please see pages 8 and 29 for further explanation.*

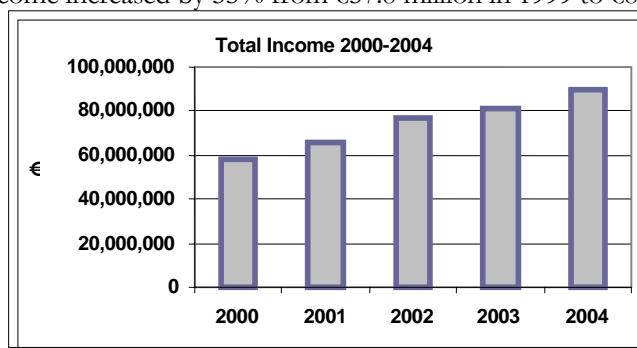
### **Service points**

- The total number of branch libraries open to the public has increased from 343 to 353
- 82 libraries are open to the public for more than 40 hours per week, compared to 72 in the previous year
- The overall number of hours open to the public has increased by 621 per week, or 7%, from 8,984 to 9,605
- 320 or 91% of the total of 353 branches provide public access to the Internet via 1,397 dedicated terminals
- The number of branches providing online public access terminals to the catalogue increased by 32 from 195 to 227

## SUMMARY, 2000-2004

### Income (*see* Summary table 1)

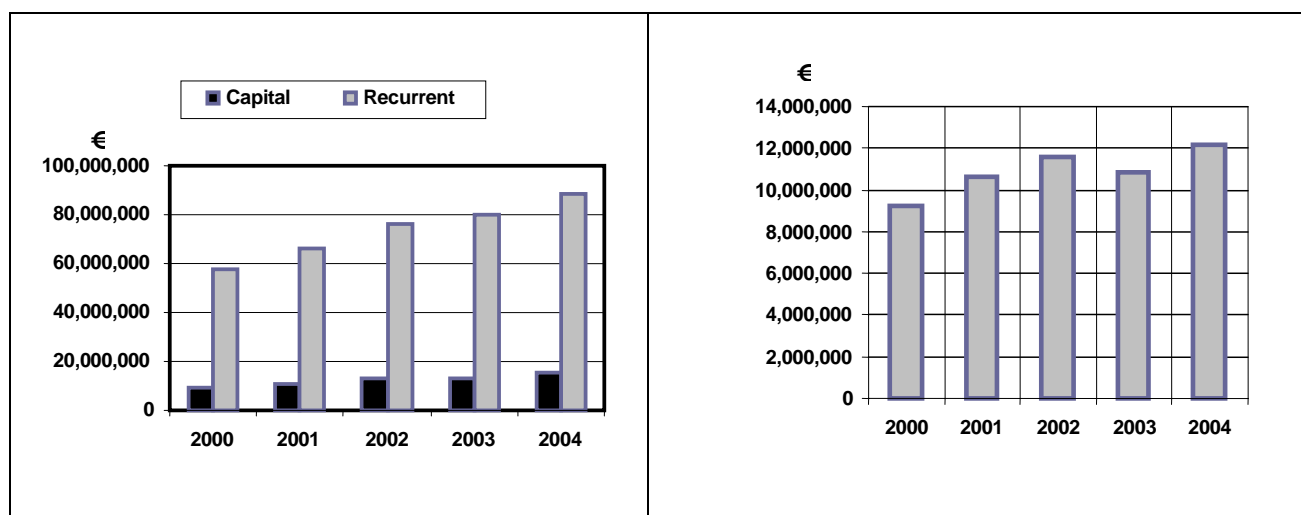
Recurrent income increased by 55% from €57.8 million in 1999 to €89.7 million in 2004



**Chart 2:** Recurrent income, 2000-2004

### Expenditure (*see* Summary table 2)

- Total expenditure (recurrent and capital) increased by 55% from €67 million to €104 million giving a five year total of €431.7 million
- Recurrent expenditure increased by 55% from €57.4 million to €88.8 million giving a five year total of €369 million
- Capital expenditure reported by public library authorities increased by 61% from €9.5 million to €15.3 million giving a five year total of €62.7 million
- Current expenditure on stock increased by 32% from €9.2 million to €12.2 million. This represents a five year total of €54.5 million



**Chart 3:** Total local authority expenditure, 2000-2004

**Chart 4:** Expenditure on stock, 2000-2004



## Collections (see Summary table 4)

- Multimedia stock increased by 16% from 361,065 to 419,096 in the five years to 2004
- Collections of books have increased by 12% from 11.5 million to 13 million

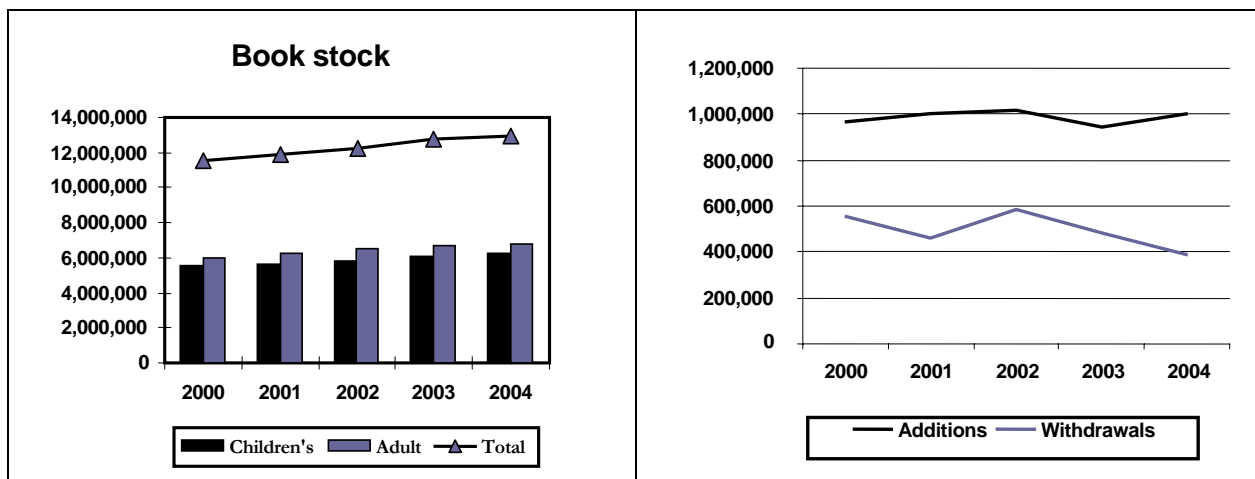


Chart 5: Books in stock, 2000-2004.

Chart 6: Additions and withdrawals, 2000-2004.

**Note:** School stock is included in children's books in stock figures

## Loans (see Summary table 5)

- Multimedia stock loans showed an increase of 79% from 0.65 million to 1.2 million.
- Book loans showed an increase of 17% from 11.6 million to 13.6 million
- Total loans (books + multimedia) recorded an overall increase of 20% from 12.3 million to 14.8 million

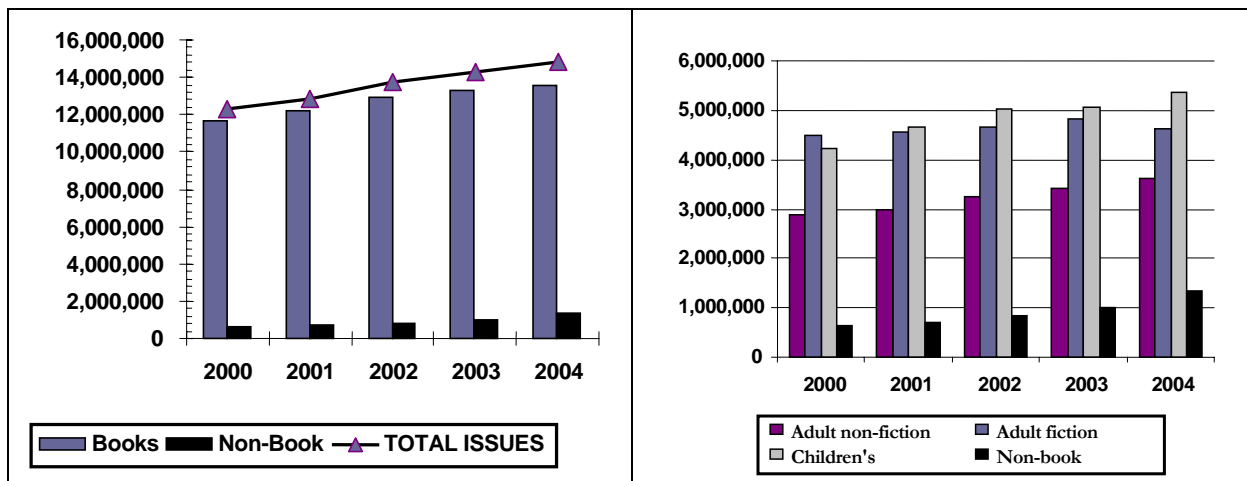


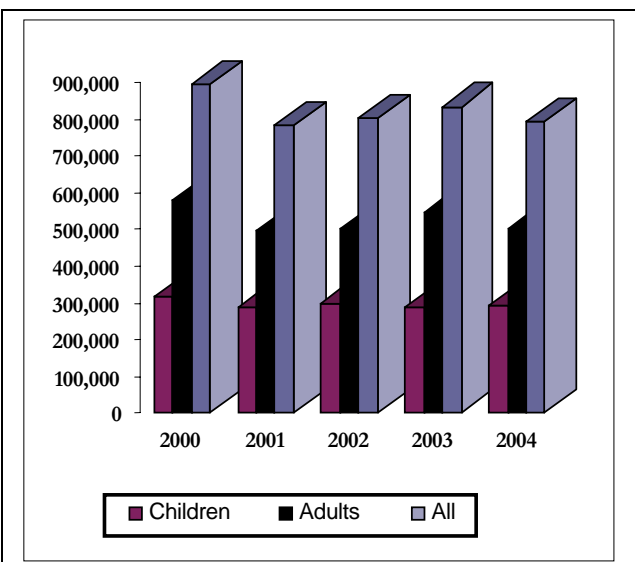
Chart 7: Loans 2000-2004

Chart 8: Loans by stock category, 2000-2004

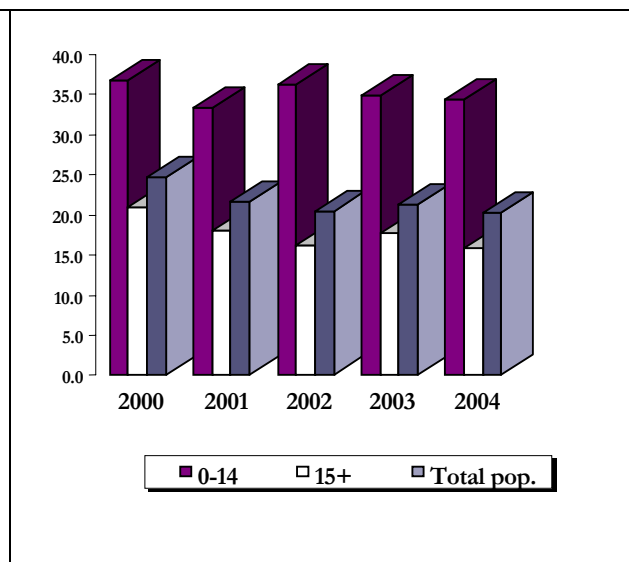
### Membership (see Summary table 5.1)

Registered membership decreased by 11% from 894,606 to 792,420. The percentage of the population registered as members of the public library service fell from 24.7% to 20.2%. Children's membership has decreased by 7% from 316,114 to 292,610. Adult membership decreased by 14% from 578,492 to 499,810.

*The decrease in the number of registered users has been influenced by a change in the definition of user – please see pages 8 and 29 for an explanation.*



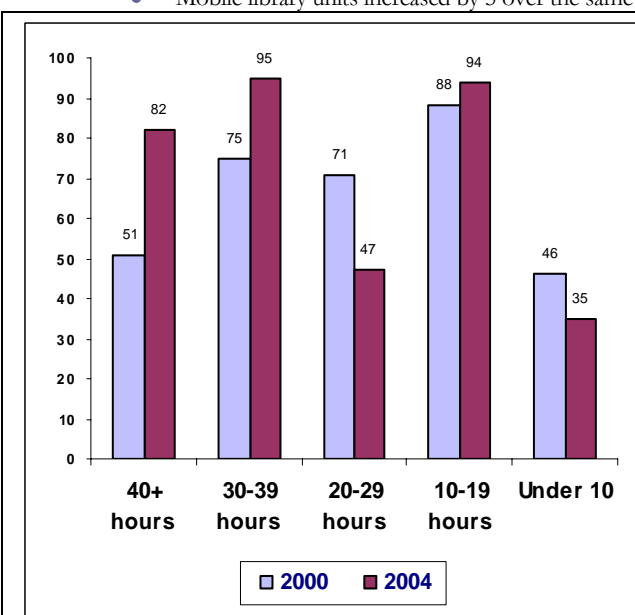
**Chart 9: Registered membership, 2000-2004**



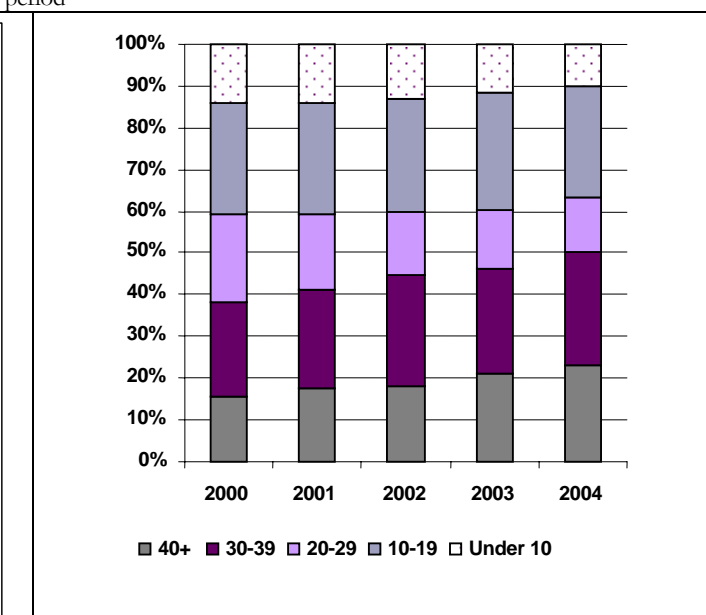
**Chart 10: Registered membership as a percentage of the population by age 2000- 2004**

### Service points (see Summary table 6)

- The total number of branch libraries increased by 22 since 2000
- Opening hours per week are now 19% higher than in 2000
- The number of branch libraries open for more than 40 hours per week increased by 31 since 2000
- Mobile library units increased by 5 over the same period



**Chart 11: Comparison of opening hours, 2000 and 2004**



**Chart 12: Service points by hours open per week (%)**

## SUMMARY TABLES, 2000-2004

### Summary table 1: Income: recurrent and capital (€)

Recurrent income	2000	2001	2002	2003	2004	5 year average	% change over 2000	% change over 2003
Total	57,846,443	65,670,751	76,544,207	81,417,857	<b>89,710,317</b>	74,237,915	55.1	10.2
Per capita	15.95	18.11	19.54	20.78	<b>22.90</b>	19.46		
Capital income <sup>(1)</sup>	10,277,162	5,650,541	10,313,018	10,696,233	<b>7,738,614</b>	8,951,114	-23.9	-26.9
<b>Total income</b> (recurrent plus capital)	68,123,605	71,321,292	86,857,225	92,114,090	<b>97,448,931</b>	83,189,029	43.2	5.9
Per capita	18.79	19.67	22.17	23.52	<b>24.88</b>	21.8		

Note: <sup>(1)</sup> Includes capital grants made by the Minister for the Environment, Heritage and Local Government from National Lottery Funds. The capital income returns are as notified by local authorities.

### Summary table 1.1: Department of the Environment, Heritage and Local Government's capital allocations (€)

	2000	2001	2002	2003	2004
Buildings & vehicles	7,564,179	4,091,874	5,135,841	9,514,962	<b>8,525,908</b>
Subsidy [Leases & loans]	501,667	1,120,896	963,902	875,019	<b>**</b>
Information Society Fund	1,075,226	568,287	1,738,446	2,108,725	<b>**</b>
Stock	1,269,616	1,269,692	14,071	0	<b>**</b>
Additional funds	126,724	123,671	424,160	188,062	<b>**</b>
<b>TOTAL</b>	<b>10,537,412</b>	<b>7,174,420</b>	<b>8,276,420</b>	<b>12,686,768</b>	<b>8,525,908</b>

Note: see also Table 1 and Notes on the 2004 returns (page 29)

### Summary table 2: Expenditure: recurrent and capital (€)

Recurrent expenditure	2000	2001	2002	2003	2004	5 year average	% change over 2000	% change over 2003
Total	57,439,567	66,004,561	76,461,180	80,304,838	<b>88,821,984</b>	73,806,426	54.6	10.6
Per capita: Acquisitions	2.54	2.93	2.96	2.77	<b>3.11</b>	2.86		
Total	15.84	18.20	19.52	20.50	<b>22.67</b>	19.35		
Capital expenditure	9,522,049	11,051,287	13,386,666	13,410,572	<b>15,313,075</b>	12,536,730	60.8	14.2
<b>Total expenditure</b> (recurrent plus capital)	<b>66,961,616</b>	<b>77,055,848</b>	<b>89,847,653</b>	<b>93,715,410</b>	<b>104,135,059</b>	86,343,059	55.5	11.1
Per capita	18.47	21.25	22.94	23.92	<b>26.58</b>	22.63		

### Summary table 3: Staffing (Nos.)

	2000	2001	2002	2003	2004
Professional	294.5	336	355	367.5	<b>372</b>
Para-professional	904	981	1,047	1,004.2	<b>1,048.11</b>
Support	193	216	218	215	<b>210.79</b>
<b>Total</b>	<b>1,391.5</b>	<b>1,533</b>	<b>1,620</b>	<b>1,586.7</b>	<b>1,630.9</b>

Authorities are asked to provide details of staff complement as full-time equivalents (FTE). As some authorities supply details of staff in post rather than staff complement this has led to some fluctuation in the returns. The number of Branch Librarians was usually given in the returns as an actual number rather than as FTE although from 2003 onwards the convention of expressing posts as full-time equivalents has been strictly implemented hence the apparent reduction in para-professional posts (includes branch librarians). Some authorities do not count library support staff, such as cleaners, as the part of the library's staff complement. These two changes are reflected in the apparent decrease in staffing for 2003. The 2004 figures accordingly presents a more accurate picture of current staffing levels.

**Summary table 4: Collections (Nos.)**

Books:	2000	2001	2002	2003	2004	% change over 2000	% change over 2003
As of 31st December	11,565,923	11,869,969	12,263,766	12,808,043	<b>12,981,569</b>	+12.2	+1.4
<b>Multimedia items:</b>							
As of 31st December	361,065	393,657	398,320	424,632	<b>419,096</b>	+16.1	-1.3
<b>Additions to stock:</b>							
Books	929,555	966,338	970,641	891,751	<b>952,340</b>	+2.5	+6.8
Multimedia items	34,111	37,456	45,188	51,805	<b>53,291</b>	+56.2	+2.9
<b>Additions per head of population:</b>	0.3	0.3	0.3	0.2	<b>0.3</b>		
<b>Withdrawals:</b>							
Books	556,436	459,068	582,730	484,448	<b>389,669</b>	-30	-19.6
Multimedia items	5,723	6,963	10,406	11,792	<b>16,034</b>	+180.2	+36

**Summary table 5: Issues (Nos.)**

Books	2000	2001	2002	2003	2004	%change over 2000	%change over 2003
Children's	4,222,002	4,656,617	5,027,299	5,063,642	<b>5,356,640</b>	26.9	5.8
Adult issues	7,396,686	7,529,601	7,903,195	8,237,447	<b>8,245,405</b>	11.5	.01
<b>Total book issues</b>	11,618,688	12,186,218	12,930,494	13,301,089	<b>13,602,045</b>	17.1	2.3
Multimedia	650,078	693,883	838,015	996,056	<b>1,163,130</b>	+78.9	16.8
<b>Total issues</b>	12,268,766	12,880,101	13,768,509	14,297,145	<b>14,765,175</b>	20.3	3.3

**Summary table 5.1: Registered Membership (Nos.)**

	2000	2001	2002	2003	2004	% change over 2000	% change over 2003
Children (0-14)	316,114	285,970	299,115	287,676	<b>292,610</b>	-7.4	1.7
Adults (15+)	578,492	497,371	502,311	546,292	<b>499,810</b>	-13.6	-8.5
<b>Total</b>	894,606	783,341	801,426	833,968	<b>792,420</b>	-11.4	-5.0
As % of population							
Children (0-14)	36.8	33.3	36.1	34.8	<b>35.4</b>		
Adult (15+)	20.9	18	16.3	17.7	<b>16.2</b>		
<b>Total population</b>	24.7	21.6	20.5	21.3	<b>20.2</b>		

The apparent decline in registered membership for 2001 is at least partly due to a change in the definition of *registered member* to one of *active member* (i.e. someone who had borrowed at least one item between January 1<sup>st</sup> and December 31<sup>st</sup>) as well as to a change in recording procedures of some authorities]. A much higher proportion [almost double] of children are members of public libraries than adults. Dublin City Council has operated a three year registration system. For the purposes of these statistics, a one year registration return is recorded. See also table 5.1 (see page 23)

**Summary table 6: Service points (Nos.)**

	2000	2001	2002	2003	2004
Branch libraries	331	338	345	343	<b>353</b>
Total number of hours open per week	8,050	8,497	8,879	8,984	<b>9,605</b>
Other service points *	555	571	592	622	<b>652</b>
Centres	82	53	83	82	<b>98</b>
Mobile units	26	29	29	29	<b>31</b>
Number of stops	1,314	1,364	1,324	1,285	<b>1,284</b>
Agency services	17	8	17	23	<b>13</b>
<b>Total number of service points</b>	1,011	999	1,066	1,099	<b>1,147</b>

\* Other service points include non-agency services to hospitals, day centres, etc.

**Summary table 7: Services to schools (Nos.)**

	2000	2001	2002	2003	2004
No. of schools served	3,180	3,179	3,191	3,285	3,266
Pupil population served	461,917	457,228	454,583	462,903	447,543

Note: Includes primary and second level schools

**Summary table 7.1: National primary school pupil population**

Academic year	No. of pupils *	% change on previous year	Primary pupils as % of 0-14 population	Grant per pupil €	Total allocation €
2004/2005	448,243	+0.62	54.2	4.52	2,026,058
2003/2004	445,444	+1.0	53.8	3.40	1,514,510
2002/2003	441,065	0	51.3	3.40	1,499,620
2001/2002	441,099	+13.9	51.3	3.40	1,499,737
2000/2001	439,340	+ 2.6	51.1	3.00	1,316,518

\* Figures supplied by the Department of Education & Science

**Notes on the following tables**

All financial data is expressed in Euros.

**Key:**

0 Denotes nil or not applicable

\*\* Denotes data not available

// Denotes too small to be significant

The data given is as supplied by individual authorities to An Chomhairle Leabharlanna.

Any additional data supplied by An Chomhairle from other sources is shown in green.

Public Library Statistics, 2004. Table 1: INCOME.										
AUTHORITY	(i) Local authority contribution	(ii) Grants <i>An Chomhairle Leabharlanna</i>	(iii) Grants <i>Department of Education &amp; Science</i>	(iv) Grants <i>Other</i>	(v) TOTAL GRANTS	(vi) Membership charges	(vii) Overdue & reservation fees	(viii) Other income	(ix) TOTAL INCOME	(x) Income per head resident population
<b>County Councils:</b>										
Carlow	983,550	0	18,816	34,382	53,198	14,210	9,620	4,864	1,065,442	23.15
Cavan	1,049,477	0	31,678	22,150	53,828	0	6,057	10,036	1,119,398	19.80
Clare	2,258,244	0	40,127	0	40,127	116,133	<i>in column (vi)</i>	16,092	2,430,596	23.53
Cork					0				6,123,600	18.86
Donegal	2,220,100	0	58,592	20,611	79,203	**	**	107,827	2,407,130	17.50
Dún Laoghaire - Rathdown	3,620,922	0	56,583	7,267	63,850	0	126,197	550	3,811,519	19.87
Fingal	5,795,574	57,500	77,792	10,000	145,292	0	216,608	5,626	6,163,100	31.38
Galway	3,116,828	128,465	72,000	0	200,465	46,563	29,411	75,974	3,469,241	16.59
Kerry	2,355,000	0	56,346	35,000	91,346	49,927		1,832	2,498,105	18.85
Kildare	3,348,118	0	71,849	0	71,849	89,779	<i>in column (vi)</i>	0	3,509,746	21.41
Kilkenny	1,568,124	29,505	33,246	18,750	81,501	75,976	<i>in column (vi)</i>	14,511	1,740,112	21.66
Laois	964,552		23,905	5,000	28,905	58,710	4,742	28,264	1,085,173	18.46
Leitrim	809,190	0	14,328	0	14,328		22,739	0	846,257	32.80
Limerick	2,222,307	19,500	46,318	0	65,818	0	0	20,375	2,308,500	19.03
Longford	822,691	0	15,000	30,984	45,984	7,120	4,550	16,745	897,090	28.88
Louth	1,613,138	0	42,888	12,878	55,766	25,508	38,286	200	1,732,898	17.02
Mayo	2,724,799	0	81,335	5,000	86,335	51,000	36,524	20,000	2,918,658	24.85
Meath	1,831,685	0	59,269	49,339	108,608	0	62,051	0	2,002,344	14.94
Monaghan	1,047,367	0	21,423	10,730	32,153	6,556	3,204	3,648	1,092,928	20.78
Offaly	1,067,079	0	28,744	7,206	35,950	21,164	5,662	54,887	1,184,742	18.61
Roscommon	1,082,577	0	21,023	0	21,023	13,767	2,496	1,037	1,120,900	20.84
Sligo	955,787	28,093	28,356	0	56,449	0	8,794	0	1,021,030	17.54
South Dublin	5,755,500	128,951	93,418	0	222,369	0	130,730	26,268	6,134,867	25.69
Tipperary JLC	2,039,588	8,888	75,174	0	84,062	32,731	10,550	161,389	2,328,320	16.62
Waterford	1,180,027	9,825	27,674	0	37,499	24,022	11,080	3,793	1,256,421	22.06
Westmeath	1,457,035	0	31,807	186,936	218,743	27,123	12,505	44,606	1,760,012	24.49
Wexford	1,726,520	0	68,751	0	68,751	18,000	15,000	49,204	1,877,475	16.10
Wicklow	1,883,683	0	47,158	7,466	54,624	0	66,835	7,642	2,012,784	17.55
Total: 28	55,499,462	410,727	1,243,600	463,699	2,118,026	678,289	823,641	675,370	65,918,388	20.60
<b>City Councils:</b>										
Cork	2,905,313	74,167	49,511	182,675	306,353	108,386	25,061	101,222	3,446,335	28.00
Dublin	16,927,277	287,500	150,572	66,824	504,896	0	292,681	307,850	18,032,704	36.37
Limerick	993,039	79,839	23,147	0	102,986	29,517	2,561	17,632	1,145,735	21.21
Waterford	1,031,385	0	18,839	12,935	31,774	97,434	<	6,562	1,167,155	26.17
Total: 4	21,857,014	441,506	242,069	262,434	946,009	235,337	320,303	433,266	23,791,929	33.16
TOTAL: 32	77,356,476	852,233	1,485,669	726,133	3,064,035	913,626	1,143,944	1,108,636	89,710,317	22.90



Public Library Statistics, 2004: Table 1.1: CAPITAL INCOME										
Authority	(i) Acquisitions General	(ii) Acquisitions DOELG Grant	(iii) Acquisitions Total	(iv) Automation General	(v) Automation Internet Grant	(vi) Automation Total	(vii) Buildings	(viii) Vehicles	(ix) Other	(x) TOTAL
<i>County Councils:</i>										
Carlow	0	4,371	4,371	0	0	0	426,007	0	0	430,378
Cavan	50,480	0	50,480	0	0	0	1,389,092	0	0	1,439,572
Clare	0	0	0	0	0	0	0	0	0	0
Cork	0	0	0	0	0	0	0	0	0	0
Donegal	0	0	0	0	0	0	224,354	0	0	224,354
Dún Laoghaire- Rathdown	0	12,504	12,504	0	0	0	18,000	0	0	30,504
Fingal	90,000	0	90,000	0	0	0	35,677	0	40,000	165,677
Galway	0	137,954	137,954	0	0	0	127,614	0	0	265,568
Kerry	0	0	0	0	0	0	0	145,665	0	145,665
Kildare	0	0	0	0	0	0	76,819	0	0	76,819
Kilkenny	0	0	0	0	8,485	8,485	0	0	0	8,485
Laois	50,000	0	50,000	0	0	0	0	0	0	50,000
Leitrim	0	0	0	0	0	0	1,502,096	0	0	1,502,096
Limerick	0	0	0	0	0	0	0	0	0	0
Longford	0	0	0	0	0	0	0	0	0	0
Louth	0	0	0	0	0	0	0	0	0	0
Mayo	0	0	0	0	0	0	153,000	0	0	153,000
Meath	0	0	0	0	0	0	0	0	0	0
Monaghan	0	0	0	0	0	0	0	0	0	0
Offaly	0	0	0	59,427	0	59,427	0	0	0	59,427
Roscommon	0	0	0	95,438	0	95,438	0	0	0	95,438
Sligo	0	0	0	0	0	0	0	0	0	0
South Dublin	0	0	0	0	0	0	0	157,632	45,190	202,822
Tipperary JLC	20,000	0	20,000	0	0	0	250,000	0	0	270,000
Waterford	123,793	0	123,793	9,825	0	9,825	1,095,128	0	0	1,228,746
Westmeath	0	0	0	0	0	0	872,754	0	0	872,754
Wexford	0	0	0	0	0	0	0	0	50,000	50,000
Wicklow	0	0	0	0	0	0	0	200,478	16,900	217,378
<b>Total: 28</b>	<b>334,273</b>	<b>154,829</b>	<b>489,102</b>	<b>164,690</b>	<b>8,485</b>	<b>173,175</b>	<b>6,170,541</b>	<b>503,775</b>	<b>152,090</b>	<b>7,488,683</b>
<i>City Councils:</i>										
Cork	0	0	0	7,651	0	7,651	0	0	0	7,651
Dublin	0	0	0	0	0	0	0	0	18,876	18,876
Limerick	0	0	0	0	0	0	0	0	41,020	41,020
Waterford	75,000	0	75,000	0	0	0	0	0	107,384	182,384
Total: 4	75,000	0	75,000	7,651	0	7,651	0	0	167,280	249,931
<b>TOTAL:32</b>	<b>409,273</b>	<b>154,829</b>	<b>564,102</b>	<b>172,341</b>	<b>8,485</b>	<b>180,826</b>	<b>6,170,541</b>	<b>503,775</b>	<b>319,370</b>	<b>7,738,614</b>

Public Library Statistics, 2004: Table 1.2: DEPARTMENT OF THE ENVIRONMENT, HERITAGE & LOCAL GOVERNMENT CAPITAL GRANT ALLOCATIONS			
Authority	(i) Buildings	(ii) Vehicles	(iii) TOTAL
<i>County Councils:</i>			
Carlow	430,378	0	430,378
Cavan	1,408,395	0	1,408,395
Clare	0	0	0
Cork	0	0	0
Donegal	224,353	0	224,353
Dún Laoghaire - Rathdown	0	0	0
Fingal	8,126	0	8,126
Galway	487,252	0	487,252
Kerry	0	44,770	44,770
Kildare	767,819	0	767,819
Kilkenny	0	0	0
Laois	0	0	0
Leitrim	1,484,533	0	1,484,533
Limerick	0	0	0
Longford	0	0	0
Louth	0	0	0
Mayo	0	0	0
Meath	0	0	0
Monaghan	0	0	0
Offaly	0	0	0
Roscommon	0	0	0
Sligo	0	0	0
South Dublin	0	157,632	157,632
Tipperary JLC	393,840	0	393,840
Waterford	1,095,128	0	1,095,128
Westmeath	1,043,321	0	1,043,321
Wexford	0	0	0
Wicklow	0	200,478	200,478
<b>Total: 28</b>	<b>7,343,145</b>	<b>402,880</b>	<b>7,746,025</b>
<i>City Councils:</i>			
Cork	680,185	0	680,185
Dublin	0	0	0
Limerick	0	0	0
Waterford	99,698	0	99,698
<b>Total: 4</b>	<b>779,883</b>	<b>0</b>	<b>779,883</b>
<b>TOTAL: 32</b>	<b>8,123,028</b>	<b>402,880</b>	<b>8,525,908</b>

Public Library Statistics, 2004. Table 2: EXPENDITURE - Salaries and stock.											
Authority	(i) Salaries	(ii) Books <i>General stock Adults</i>	(iii) Books <i>General stock Children's</i>	(iv) Books <i>Primary School Scheme</i>	(v) Multimedia	(vi) Serials	(vii) Other	(viii) TOTAL ACQUISITIONS	(ix) € spent on Acquisitions per head	(x) € spent on Acquisitions per head minus schools	(xi) Binding
<b>County Councils:</b>											
Carlow	527,389	129,502	<i>in column (ii)</i>	18,816	15,406	11,652	0	175,376	3.81	3.40	6,547
Cavan	748,326	56,840	73,439	32,151	8,460	7,907	0	178,797	3.16	2.59	5,637
Clare	1,547,342	244,669	<i>in column (ii)</i>	<i>in column (ii)</i>	6,815	11,855	26,171	289,510	2.80	2.74	4,612
Cork	<i>in col. xxi</i>	>	>	>	>	>	>	1,050,000	3.23	3.23	>
Donegal	1,435,885	146,493	87,172	33,000	17,555	23,336	0	307,556	2.24	2.00	1,764
Dún Laoghaire – Rathdown	2,678,565	182,919	82,037	60,458	21,018	34,878	14,000	395,310	2.06	1.75	12,534
Fingal	4,296,863	491,200	142,000	127,800	160,000	128,916	0	1,049,916	5.35	4.69	0
Galway	2,013,714	362,312	79,000	13,243	25,328	5,427	0	485,310	2.32	2.26	6,287
Kerry	1,695,686	300,000	<i>in column (ii)</i>	56,346	33,100	24,786	0	414,232	3.13	2.70	7,106
Kildare	2,039,510	362,697	<i>in column (ii)</i>	71,849		17,405	0	451,951	2.76	2.32	0
Kilkenny	1,029,415	121,954	32,736	25,391	18,058	11,725	5,859	215,723	2.69	2.37	0
Laois	618,345	164,292	<i>in column (ii)</i>	23,905				188,197	3.20	2.80	0
Leitrim	544,499	67,337	<i>in column (ii)</i>	10,000	0	0	0	77,337	3.00	2.61	0
Limerick	1,492,161	210,826	46,271	87,052	17,421	0	0	361,570	2.98	2.26	0
Longford	568,000	75,000	<i>in column (ii)</i>	11,500	2,300	0	0	88,000	2.86	2.49	2,500
Louth	1,050,148	116,399	62,303	42,678	58,617	6,348	0	286,345	2.81	2.39	2,762
Mayo	1,844,986	186,760	170,240	55,702	25,000	8,000	0	445,702	3.79	3.32	9,000
Meath	1,320,447	197,501	<i>in column (ii)</i>	54,836	<i>in column (ii)</i>	<i>in column</i>	0	252,337	1.88	1.47	0
Monaghan	614,600	91,832	43,162	24,058	14,096	4,080	0	177,228	3.37	2.91	0
Offaly	781,107	128,505	0	28,787	8,180	3,435	7,805	176,712	2.78	2.32	6,461
Roscommon	648,700	134,200	59,400	23,100	12,000	10,500	0	239,200	4.45	4.02	6,300
Sligo	703,985	105,971	31,909	15,000	4,057	9,336	10,468	176,741	3.04	2.78	1,063
South Dublin	3,419,474	724,675		95,487	0	50,000	0	870,162	3.64	3.24	0
Tipperary JLC	1,454,070	210,713	0	0	0	0	0	210,713	1.50	1.50	0
Waterford	866,707	52,076	35,326	27,674	9,924	9,704	0	134,704	2.37	1.88	1,414
Westmeath	1,026,836	178,554	<i>in column (ii)</i>	31,655			100,080	310,289	4.32	3.88	0
Wexford	900,331	217,417	68,987	68,840	42,103	5,973	0	403,320	3.46	2.87	6,148
Wicklow	1,235,763	272,588		47,995				320,583	2.80	2.38	0
<b>Total: 28</b>	<b>37,102,854</b>	<b>5,533,232</b>	<b>1,013,982</b>	<b>1,087,323</b>	<b>499,438</b>	<b>385,263</b>	<b>164,383</b>	<b>9,733,621</b>	<b>3.04</b>	<b>2.70</b>	<b>80,135</b>
<b>City Councils:</b>											
Cork	2,308,231	234,000	65,000	55,130	35,000	41,675	0	430,805	3.50	3.05	22,800
Dublin	11,678,900	1,028,648	229,888	150,572	184,062	194,987	0	1,788,157	3.61	3.30	40,963
Limerick	646,322	58,027	30,879	19,809	6,440	2,567	1,710	119,432	2.21	1.84	2,822
Waterford	758,694	49,930	15962	22,526	9,814	5,527	0	103,759	2.33	1.82	0
Total: 4	15,392,147	1,370,605	341,729	248,037	235,316	244,756	1,710	2,442,153	3.40	3.06	66,585
<b>TOTAL: 32</b>	<b>52,495,001</b>	<b>6,903,837</b>	<b>1,355,711</b>	<b>1,335,360</b>	<b>734,754</b>	<b>630,019</b>	<b>166,093</b>	<b>12,175,774</b>	<b>3.11</b>	<b>2.77</b>	<b>146,720</b>

Public Library Statistics, 2004. Table 2.1: EXPENDITURE - Premises, Transport, etc.												
	(xi)	(xii)	(xiii)	(xiv)	(xv)	(xvi)	(xvii)	(xviii)	(xix)	(xx)	(xxi)	(xxii)
	~~~~~ PREMISES ~~~~~			TRANSPORT & SUBSISTENCE			Library computing costs	Leasing & loan repayments	Contribution to An Chomhairle Leabharlanna	Other expenditure	TOTAL EXPENDITURE	Expenditure per head of resident population
Authority	HQ	Branches	TOTAL	Transport	Travel & Subsistence	TOTAL						
County Councils:												
Carlow	58,582	20,857	79,439	4,466	4,466	8,932	78,009	0	13,074	101,284	990,050	21.52
Cavan	136,731	<i>in col. (xi)</i>	136,731	2,566	15,478	18,044	11,861	0	16,066	83,936	1,199,398	21.21
Clare	19,989	200,801	220,790	4,180	56,353	60,533	229,502	0	29,376	48,931	2,430,596	23.53
Cork	>	>	>	>	>	>	>	>	>	>	6,123,600	18.86
Donegal	42,522		42,522	3,259	6,467	9,726	67,932	0	39,089	0	1,904,474	13.84
Dún Laoghaire -	187,058	226,555	413,613	24,345	15651	39,996	165,795	0	54,493	175,034	3,935,340	20.52
Fingal	192,000	115,000	307,000	0	27,490	27,490	70,075	0	55,800	355,965	6,163,109	31.38
Galway	548,811	<i>in col. (xi)</i>	548,811	50,204	33,980	84,184	1,476	128,465	40,699	8,347	3,317,293	15.87
Kerry	6,380	28,521	34,901	29,076	30,459	59,535	28,437	51,137	37,654	169,417	2,498,105	18.85
Kildare	65,646	179,440	245,086	10,430	51,131	61,561	72,131	0	46,581	592,925	3,509,745	21.41
Kilkenny	44,492	147,569	192,061	39,303	11,177	50,480	68,454	9,075	22,826	152,076	1,740,110	21.66
Laois	17,774	123,767	141,541	9,969	0	9,969	24,754	0	16,699	95,669	1,095,174	18.63
Leitrim	0	32,755	32,755	0	25,399	25,399	52,088	0	7,300	106,849	846,227	32.80
Limerick	21,348	89,327	110,675	19,112	23,574	42,686	49,711	0	34,459	214,400	2,305,662	19.01
Longford	98,700	89,497	188,197	9,100	10,000	19,100	20,903	0	9,500	0	897,000	28.87
Louth	21,733	19,305	41,038	20,164	20,706	40,870	42,603	142,211	31,971	242,338	1,880,286	18.47
Mayo	320,000	<i>in col. (xi)</i>	320,000	120,000	45,000	165,000	100,000	0	33,970	0	2,918,658	24.85
Meath	191,782	<i>in col. (xi)</i>	191,782	3,354	15,464	18,818	126,259	0	38,074	54,627	2,002,344	14.94
Monaghan	132,673	42,900	175,573	11,512	54,447	65,959	15,065	0	14,943	27,721	1,091,089	20.75
Offaly	10,789	68,214	79,003	845	7,852	8,697	27,767	0	18,088	86,907	1,184,742	18.61
Roscommon	26,900	28,400	55,300	13,000	10,000	23,000	56,900	0	17,000	74,500	1,120,900	20.84
Sligo	56,186	0	56,186	0	20,866	20,866	33,889	5,764	16,536	6,000	1,021,030	17.54
South Dublin	805,097	<i>in col. (xi)</i>	805,097	61,220	<i>in col. (xiii)</i>	61,220	177,661	253,879	67,859	178,698	5,834,050	24.43
Tipperary JLC	17,776	2,539	20,315	0	33,598	33,598	0	94,805		447,911	2,261,412	16.14
Waterford	3,300	34,086	37,386	3,487	26,813	30,300	50,228	13,972	16,182	106,529	1,257,422	22.08
Westmeath	35,301	204,455	239,756	7,200	13,052	20,252	44,773	0	20,417	97,691	1,760,014	24.49
Wexford	130,053	105,243	235,296	20,908	30,310	51,218	35,000	65,000	33,128	0	1,729,441	14.83
Wicklow	65,586	0	65,586	10,151	23,824	33,975	33,000	85,000	32,582	206,295	2,012,784	17.55
Total: 28	3,257,209	1,759,231	5,016,440	477,851	613,557	1,091,408	1,684,273	849,308	764,366	3,634,050	65,030,055	20.32
City Councils												
Cork	329,076	<i>in col. (xi)</i>	329,076	15,600	4,300	19,900	66,140	0	34,965	234,418	3,446,335	28.00
Dublin	348,154	2,525,714	2,873,868	36,995	40,137	77,132	373,876	503,648	140,865	555,295	18,032,704	36.37
Limerick	248,204	21,065	269,269	1,121	3,012	4,133	16,967	0	13,827	72,964	1,145,736	21.21
Waterford	256,999	0	256,999	3,411	6,602	10,013	25,019	0	12,670	0	1,167,154	26.17
Total: 4	1,182,433	2,546,779	3,729,212	57,127	54,051	111,178	482,002	503,648	202,327	862,677	23,791,929	33.16
TOTAL:	4,439,642	4,306,010	8,745,652	534,978	667,608	1,202,586	2,166,275	1,352,956	966,693	4,496,727	88,821,984	22.67

Table 2.2: Public Library Statistics, 2004: CAPITAL EXPENDITURE						€
	(i)	(ii)	(iii)	(iv)	(v)	(vi)
AUTHORITY					Other	Total Expenditure
	<i>Acquisitions</i>	<i>Automation</i>	<i>Buildings</i>	<i>Vehicles</i>		
<i>County Councils:</i>						
Carlow	8,743	0	568,010	0	0	576,753
Cavan	100,960	24,061	2,834,278	0	0	2,959,299
Clare	0	0	0	0	0	0
Cork	0	0	0	0	0	0
Donegal	0	0	0	0	0	0
Dún Laoghaire - Rathdown	0	0	87,071	0	0	87,071
Fingal	90,000	0	35,677	0	40,000	165,677
Galway	137,954	0	127,614	0	0	265,568
Kerry	0	24,538	239,000	147,920	0	411,458
Kildare	0	0	777,438	0	0	777,438
Kilkenny	0	8,485	0	0	0	8,485
Laois	50,000	0	0	0	0	50,000
Leitrim	0	0	2,042,578	0	0	2,042,578
Limerick	0	0	0	0	0	0
Longford	0	0	0	0	0	0
Louth	0	0	0	0	0	0
Mayo	17,520	0	451,501	0	0	469,021
Meath	0	0	0	0	0	0
Monaghan	0	8,541	57,269	0	0	65,810
Offaly	0	79,236	0	0	0	79,236
Roscommon	0	95,438	0	0	0	95,438
Sligo	0	0	0	0	0	0
South Dublin	0	0	0	157,632	45,189	202,821
Tipperary JLC	0	0	1,654,338	0	0	1,654,338
Waterford	123,793	0	1,175,454	0	0	1,299,247
Westmeath	0	0	1,163,672	0	0	1,163,672
Wexford	0	0	0	0	50,000	50,000
Wicklow	0	0	0	200,478	16,900	217,378
<i>Total: 28</i>	<i>528,970</i>	<i>240,299</i>	<i>11,213,900</i>	<i>506,030</i>	<i>152,089</i>	<i>12,641,288</i>
<i>City Councils</i>						
Cork	0	2,775	0	0	0	2,775
Dublin			1,042,166		18,876	1,061,042
Limerick	56,707	0	1,041,472	0	0	1,098,179
Waterford	178,979	8,930	214,498	107,384	0	509,791
<i>Total: 4</i>	<i>235,686</i>	<i>11,705</i>	<i>2,298,136</i>	<i>107,384</i>	<i>18,876</i>	<i>2,671,787</i>
<b>TOTAL:32</b>	<b>764,656</b>	<b>252,004</b>	<b>13,512,036</b>	<b>613,414</b>	<b>170,965</b>	<b>15,313,075</b>

Public Library Statistics, 2004. Table 3: STAFFING															
	(i)	(ii)	(iii)	(iv)	(v)	(vi)	(vii)	(viii)	(ix)	(x)	(xi)	(xii)	(xiii)	(xiv)	(xv)
	Co/City Librarian	Executive Librarian	Assistant Librarian	Senior Library Assistants	Library Assistants	Branch Assistant	Branch Librarian	Clerical Officers	Driver Assistants	Van Drivers	Support Staff	TOTALS			TOTAL Staff Complement
												Professional	Para Professional	Support Staff	
County Councils:															
Carlow	1	1	2	2	3	0	2.4	1	1	0	0	4	9.4	0	13.4
Cavan	1	1	3	4	4	0	7	1	1	0	0	5	17	0	22
Clare	1	4	5	13.5	5	0	7.7	0	0	1	6.75	10	26.2	7.75	43.95
Cork	1	3	11.5	13	30.5	0	22.8	1	8	0	2	15.5	75.3	2	92.8
Donegal	1	1	4	10	20	0	9	2	2	0	0	6	43	0	49
Dún Laoghaire - Rathdown	See table 3.1											23	50	10	83
Fingal	See table 3.2											32.5	82	30	144.5
Galway	1	2	6	12	8	0	13	2	3	0	1	9	38	1	48
Kerry	1	1	6	9	12	0	0	3	4	0	3	8	28	3	39
Kildare	1	1	11	8	17	0	8.25	4	2	0	6.79	13	39.25	6.79	59.04
Kilkenny	1	0	3	4	8	0	6	1	2	0	5	4	21	5	30
Laois	1	1	2	2	1	0	7	1	0	0	0	4	11	0	15
Leitrim	1	1	1	3	2	0	6	1	0	0	0	3	12	0	15
Limerick	1	4	7	5	6	0	13	2	2	0	3.5	12	28	3.5	43.5
Longford	1	2	1	3	5	0	5	2	0	0.5	0.5	4	15	1	20
Louth	1	1	5	8	10	0	1	1	2	0	2	7	22	2	31
Mayo	1	3	4	6	11	0	13	2	1	0	1	8	33	1	42
Meath	1	3	7	5	16	0	5	3	1	0	1	11	30	1	42
Monaghan	1	1	3	5	7	0	2	0	2	0	1.5	5	16	1.5	22.5
Offaly	1	1	1	2	3	0	5	3	1	0	2	3	14	2	19
Roscommon	1	0	3	3	5	0	4	1	2	0	1.5	4	15	1.5	20.5
Sligo	1	1	2	3	6	0	6	1	0	1	0	4	16	1	21
South Dublin	See table 3.3											25	56	20	101
Tipperary JLC	1	1	6	9	7	0	8	3	2	0	7	8	29	7	44
Waterford	1	0	4	5.6	7	0	2.7	0	1	0	2.5	5	16.3	2.5	23.8
Westmeath	1	2	3	6	10	0	6	1	1	0	1	6	24	1	31
Wexford	1	2	4	2	6	0	0.66	2	2	1	1.25	7	12.66	2.25	21.91
Wicklow	1	2	4	7	6	0	10.5	1	2	0	3	7	26.5	3	36.5
Total 28												253	805.61	115.79	1,174.4
City Councils															
Cork	1	3	9	11	29.5	0	0	3	0	0	9	13	43.5	9	65.5
Dublin	See table 3.4											96	170	82	348
Limerick	1	2	2	5	4	0	0	1	1	0	3	5	11	3	19
Waterford	1	1	3	3	14	0	0	1	0	0	1	5	18	1	24
Total: 4												119	242.5	95	456.5
TOTAL: 32												372	1,048.11	210.79	1,630.9



Table 3.1: STAFFING, 2004 - DÚN LAOGHAIRE-RATHDOWN			
	(i) <i>HQ</i>	(ii) <i>Branches / Mobiles</i>	(iii) <b>TOTAL</b>
<i>Grade</i>			
County Librarian	1		<b>1</b>
Senior Librarians	4	3	<b>7</b>
Librarians	5	10	<b>15</b>
Senior Library Assistants	3	12	<b>15</b>
Library Assistants	7	23	<b>30</b>
Branch Librarians		1	<b>1</b>
Clerical Officers	4	0	<b>4</b>
Driver / Assistants	0	0	<b>0</b>
Van Drivers	2	0	<b>2</b>
Other Grades	2	6	<b>8</b>
<b>TOTALS</b>	<b>28</b>	<b>55</b>	<b>83</b>
* includes 4 part-time Library Assistants			
Table 3.3: STAFFING, 2004 - SOUTH DUBLIN			
	(i) <i>HQ</i>	(ii) <i>Branches / Mobiles</i>	(iii) <b>TOTAL</b>
<i>Grade</i>			
County Librarian	1		<b>1</b>
Senior Librarians	3	5	<b>8</b>
Librarians	5	11	<b>16</b>
Senior Library Assistants	3	15	<b>18</b>
Library Assistants		36	<b>36</b>
Branch Librarians		1	<b>1</b>
Clerical Officers	1		<b>1</b>
Driver Assistants			
Van Drivers	1	4	<b>5</b>
Other Grades	1	14	<b>15</b>
<b>TOTALS</b>	<b>15</b>	<b>86</b>	<b>101</b>

Table 3.2: STAFFING, 2004 - FINGAL			
	(i) <i>HQ</i>	(ii) <i>Branches / Mobiles</i>	(iii) <b>TOTAL</b>
<i>Grade</i>			
County Librarian	1		<b>1</b>
Senior Librarians	3	7.5	<b>10.5</b>
Librarians	4	17	<b>21</b>
Senior Library Assistants	4	21	<b>25</b>
Library Assistants	10	43	<b>53</b>
Branch Assistants		2	<b>2</b>
Branch Librarians		1	<b>1</b>
Clerical Officers		1	<b>1</b>
Driver Assistants		0	<b>0</b>
Van Drivers	1	4	<b>5</b>
Other Grades		25	<b>25</b>
<b>TOTALS</b>	<b>23</b>	<b>121.5</b>	<b>144.5</b>
Table 3.4: STAFFING, 2004 - DUBLIN CITY.			
	(i) <i>HQ</i>	(ii) <i>Branches / Mobiles</i>	(iii) <b>TOTAL</b>
<i>Grade</i>			
Chief Librarian	1		<b>1</b>
Deputy Librarian	1		<b>1</b>
Divisional Librarians	4.5	2	<b>6.5</b>
Senior Librarians	10	20	<b>30</b>
Librarians	10	35	<b>45</b>
Senior Library Assistants	5	40	<b>45</b>
Library Assistants	1	84	<b>85</b>
Branch Assistants	0	10	<b>10</b>
Clerical Officers	8	3	<b>11</b>
Drivers Assistants	0	3	<b>3</b>
Van Drivers	3	0	<b>3</b>
Other Grades	9	68	<b>77</b>
<b>TOTALS</b>	<b>52.5</b>	<b>265</b>	<b>317.5</b>
Figures provided give the number of posts filled and not the full staff complement which is: Professional 96; Para-professional 170; Support staff 82; Total 348			

Public Library Statistics, 2004. Table 4: COLLECTIONS - BOOKS & SERIALS.													(Nos.)
Authority	(i)	(ii)	(iii)	(iv)	(v)	(vi)	(vii)	(viii)	(ix)	(x)	(xi)	(xii)	(xiii)
	BOOKS IN STOCK				TOTAL BOOKS IN STOCK	Stock items per head population	SERIAL SUBSCRIP- TIONS	BOOKS ADDED TO STOCK, 2004				TOTAL Added to stock	WITHDRAWN 2004 TOTAL
	Adult non-fiction	Adult fiction	Children's	Schools				Adult non-fiction	Adult fiction	Children's	Schools		
County Councils:													
Carlow	41,516	26,394	33,817	6,450	108,177	2.4	122	3,851	3,827	7,523	0	15,201	0
Cavan	45,969	35,832	73,494	28,312	183,607	3.2	**	4,379	4,875	11,835	4,592	25,681	3,573
Clare	104,565	88,693	99,649		292,907	2.8	60	5,765	4,989	6,483		17,237	13,177
Cork	381,309	359,044	627,946	0	1,368,299	4.2	**	10,807	28,662	24,590	0	64,059	48,352
Donegal	105,207	97,951	159,624	95,537	458,319	3.3	235	21,960			2,110	24,070	651
Dún Laoghaire – Rathdown	148,494	70,518	97,499	101,088	417,599	2.2	90	7,133	6,013	9,238	6,504	28,888	12,934
Fingal	165,395	84,943	130,444	30,852	411,634	2.1	278	16,176	13,816	20,709	20,187	70,888	23,492
Galway	149,005	162,329	205,396	125,557	642,287	3.1	**	9,744	13,562	23,551	10,366	57,223	18,838
Kerry	118,586	68,948	109,284	144,803	441,621	3.3	142	5,185	4,830	8,001	5,697	23,713	0
Kildare	145,921	152,517	255,596	14,542	568,576	3.5	**	7,330	6,967	21,991		36,288	6,572
Kilkenny	85,071	67,370	97,554	70,000	319,995	4.0	**	4,315	3,761	9,607	<	17,683	8,851
Laois	53,582	37,285	66,858	55,917	213,642	3.6	42	4,585	4,140	6,816	4,610	20,151	11,458
Leitrim	26,307	22,807	39,174	18,391	106,679	4.1		1,734	2,328	4,403	1,391	9,856	80
Limerick	123,703	141,096	327,920	**	592,719	4.9	**	5,442	6,460	16,397	**	28,299	11,458
Longford	36,208	37,198	60,944	54,302	188,652	6.1		1,264	1,475	2,645	3,426	8,810	1,639
Louth	76,984	55,590	110,539	<	243,113	2.4	29	3,484	3,449	14,258	<	21,191	5,796
Mayo	110,939	114,975	158,214	154,952	539,080	4.6	**	7,562	7,131	8,420	5,543	28,656	6,479
Meath	46,240	53,719	64,387	38,884	203,230	1.5		8,334	5,994	12,295	6,507	33,130	9,706
Monaghan	62,984	40,998	90,179	20,220	214,381	4.1		4,545	3,672	3,245	2,370	13,832	7,217
Offaly	47,448	49,272	75,021	55,979	227,720	3.6	152	2,186	4,514	8,243	5,077	20,020	16,690
Roscommon	88,702	54,168	72,073	34,716	249,659	4.6	**	4,533	3,800	4,776	2,580	15,689	13,699
Sligo	39,958	60,479	53,302	19,071	172,810	3.0	79	2,515	4,594	6,951		14,060	465
South Dublin	193,183	102,546	198,138	119,283	613,150	2.6	122	16,717	11,191	21,813	15,314	65,035	5,108
Tipperary JLC	168,780	204,277	211,596	84,099	668,752	4.8		3,155	4,310	7,698	8,126	23,289	12,253
Waterford	34,029	23,280	33,156	34,521	124,986	2.2	15	1,366	1,838	4,666	4,379	12,249	9,419
Westmeath	80,551	36,873	60,619	45,661	223,704	3.1		4,249	4,065	6,099	5,668	20,081	2,582
Wexford	107,683	89,196	42,839	224,232	463,950	4.0	24	5,418	4,347	12,999	14,795	37,559	2,749
Wicklow	117,350	79,185	122,035	51,991	370,561	3.2	**	6,197	5,801	9,283	4,944	26,225	11,247
Total: 28	2,905,669	2,417,483	3,677,297	1,629,360	10,629,809	3.3	1,390	179,931	170,411	294,535	134,186	779,063	264,485
City Councils													
Cork	127,742	71,312	84,219	137,116	420,389	3.4	220	9,546	7,513	12,927	10,380	40,366	26,786
Dublin	836,582	228,464	244,643	244,420	1,554,109	3.1	515	33,686	24,369	24,333	23,833	106,221	74,788
Limerick	65,827	33,570	58,379	89,869	247,645	4.6	34	2,497	1,716	5,415	3,943	13,571	8,299
Waterford	13,549	46,286	28,666	41,116	129,617	2.9	**	1,600	3,718	3,433	4,368	13,119	15,311
Total: 4	1,043,700	379,632	415,907	512,521	2,351,760	3.3	769	47,329	37,316	46,108	42,524	173,277	125,184
TOTAL: 32	3,949,369	2,797,115	4,093,204	2,141,881	12,981,569	3.3	2,159	227,260	207,727	340,643	176,710	952,340	389,669

Public Library Statistics, 2004. Table 4.1: COLLECTIONS – Multimedia													
AUTHORITY	(i)	(ii)	(iii)	(iv)	(v)	(vi)	(vii)	(viii)	(ix)	(x)	(xi)	(xii)	(xiii)
	Sound recordings		Spoken word	Talking books	Micro-form sets	Videos	Films	Computer software	Photographic	Maps	Art	Other	TOTAL
	<i>Discs</i>	<i>Tapes</i>											
<i>County Councils:</i>													
Carlow	697	0	0	1,462	1,800	247	0	**	0	153	12	0	4,371
Cavan	0	0	2,725	<	401	182	0	219	0	0	0	0	3,527
Clare	2,621	0	871	0	783	0	0	0	7,958	349	0	0	12,582
Cork	0	0	0	11,825	0	880	0	496	0	0	0	0	13,201
Donegal	5,714	3,463	0	3,402	645	5,194	0	82	0	809	0	0	19,309
Dún Laoghaire – Rathdown	1,520	12,241	**	**	12	359	0	221	**	888	207	723	16,171
Fingal	9,796	6,861	0	5,132	0	1,149	419	0	0	156	1,183	1,469	26,165
Galway	0	0	0	7,956	0	0	0	0	3,000		0	0	10,956
Kerry	695	5,767	0	798	3,776	1,059	0	1,169	245	<i>with NF</i>	0	0	13,509
Kildare	2,012	4,842	123	2,569	704	2,079	0	202	305	474	0	0	13,310
Kilkenny	1,952	<	<	<	<	<	<	<	<	<	<	<	1,952
Laois	1,126	1,351	857	1,599	862	374	0	52	420	121	0	0	6,762
Leitrim	410	349	0	249	230	921	0	77	4,200	100	40	0	6,576
Limerick	**	**	**	**	**	**	**	**	**	**	**	**	**
Longford	253	996	505	2,125	160	20	*	*	*	*	*	*	4,059
Louth	2,251	5,789	<	<	798	1,452	0	493	61	277	0	0	11,121
Mayo	300	2,350	0		660	1,040	0	290	600	60	0	1,555	6,855
Meath	**	**	**	**	**	**	**	**	**	**	**	**	0
Monaghan	2,149	1,076	0	1,851	0	44	0	13	420	130	0	0	5,683
Offaly	8	24	0	932	412	1,374	2	297	6,589	500	0	235	10,373
Roscommon	14,218	<	<	<	<	<	<	<	<	<	<	<	14,218
Sligo	180	0	0	496	0	121	0	27	0	0	0	0	824
South Dublin	14,870	8,921	0	6,167	0	989	0	761	0	359	1,713	3,208	36,988
Tipperary JLC	751	7,244	0	0	0	500	0	251	0	299	0	0	9,045
Waterford	2,037	336	0	855	0	327	0	104	60	306	0	18	4,043
Westmeath	1,834	182	0	2,737	737	144	0	225	2,569	550	0	0	8,978
Wexford	1,824	19	30	908	97	38	0	26	1,712	50	2	0	4,706
Wicklow	3,028	1,406	0	2,568	0	60	0	679	138	60	0	0	7,939
Total: 28	70,246	63,217	5,111	53,631	12,077	18,533	421	5,684	28,277	5,641	3,157	7,208	273,223
<i>City Councils:</i>													
Cork	23,303	4,689	0	10,103	2,786	2,556	0	148	0	250	0	0	43,835
Dublin	14,328	24,262	0	24,712	376	4,508	4	3,870	0	316	766	6,053	79,195
Limerick	3,920	1,922	0	2,435	660	72	0	177	0	0	0	0	9,186
Waterford	6,586	1,572	0	2,468	0	1,847	222	0	0	0	0	962	13,657
Total: 4	48,137	32,445	0	39,718	3,822	8,983	226	4,195	0	566	766	7,015	145,873
Total: 32	118,383	95,622	5,111	93,349	15,899	27,536	647	9,879	28,277	6,207	3,923	14,223	419,096

Public Library Statistics, 2004. Table 4.2: COLLECTIONS - Multimedia - Additions and withdrawals														
	(xiv)	(xv)	(xvi)	(xvii)	(xviii)	(xix)	(xx)	(xxi)	(xxii)	(xxiii)	(xxiv)	(xxv)	(xxvi)	(xxvii)
	MULTIMEDIA ITEMS ADDED TO STOCK,													WITHDRAWALS
AUTHORITY	Sound recordings		Spoken	Talking	Micro-	Videos	Films	Computer	Photo-	Maps	Art	Other		2004
	<i>Dises</i>	<i>Tapes</i>	cassettes	books	form sets			Software	graphic				TOTAL	TOTAL
<i>County Councils:</i>														
Carlow	422	0	0	351	36	0	0	0	0	0	0	0	809	0
Cavan	0	0		307	0	10	0	74	**	**	**	0	391	98
Clare	749			215	97				188	2			1,251	65
Cork				1,788		108		43				1	1,940	607
Donegal													0	**
Dún Laoghaire – Rathdown	1,188	526				18		16		17		621	2,386	1,394
Fingal		2,286		1,569		1,317	1,699	897		209	47	239	8,263	1,706
Galway				1,254									1,254	234
Kerry				144	605	49		477	48	0	0	0	1,323	921
Kildare	747	124	0	330	0	396	0	0	0	0	0	271	1,868	1,035
Kilkenny	429	4	32	75	116	50	0	0	0	0	0	0	706	2,048
Laois	200	18		65		33		15				119	450	119
Leitrim	0	0	0	0	0	0	0	0	0	0	0	0	0	0
Limerick													**	**
Longford	253	56	143	50	0	0	0	0	0	0	0	0	502	100
Louth	752		1,022			273	447	4					2,498	386
Mayo	720	30	0	0	10	640	0	0	270	5	0	10	1,685	128
Meath	1,003	48	0	830	0	681	0	0	0	0	0	0	2,562	59
Monaghan	639			5			352						996	88
Offaly	0	0	0	183	0	65	0	80	61	1	0	0	390	197
Roscommon													787	43
Sligo	65	0	0	339	0	0	0	12	0	0	0	0	416	61
South Dublin	1,929	10		561			179	10	10		78	1,192	3,969	0
Tipperary JLC	0	0	0	0	0	0	0		0	0	0	0	0	0
Waterford	48	20		251		39		3		3			364	90
Westmeath	506		118	461	74	85	152	53					1,449	62
Wexford	310	27	203	273	5	0	0	0	788	0	0	50	1,656	103
Wicklow	385	67		409		2		33					896	121
Total: 28	10,345	3,216	1,518	9,460	943	3,766	2,829	1,717	1,365	237	125	2,503	38,811	9,665
<i>City Councils:</i>														
Cork	1,672	150	0	1,179	88	192	0	313	0	0	0	0	3,594	1,292
Dublin	1009	1,331		2,687		50		302		57		2,228	7,664	3,998
Limerick	234	2		499									735	16
Waterford	741	9	0	363	0	361	949	0	0	0	0	64	2,487	1,063
Total: 4	3,656	1,492	0	4,728	88	603	949	615	0	57	0	2,292	14,480	6,369
Total: 32	14,001	4,708	1,518	14,188	1,031	4,369	3,778	2,332	1,365	294	125	4,795	53,291	16,034

Public Library Statistics, 2004. Table 5: ISSUES									
Authority	(i)	(ii)	(iii)	(iv)	(v)	(vi)	(vii)	(viii)	(ix)
	<b>BOOK ISSUES</b>			<b>TOTAL</b>	<b>MULTIMEDIA ISSUES</b>		<b>TOTAL</b>	<b>TOTAL</b>	Issues
	<i>Adult</i>	<i>Adult</i>	<i>Children's</i>	<b>BOOK</b>	<i>Sound</i>	<i>Other</i>	<b>MULTIMEDIA</b>	<b>ISSUES</b>	per head
	<i>non-fiction</i>	<i>fiction</i>		<b>ISSUES</b>	<i>recordings</i>		<b>ISSUES</b>		population
<i>County Councils:</i>									
Carlow	45,210	47,868	62,813	155,891	8,139	1,901	10,040	165,931	3.6
Cavan	22,635	39,923	97,698	160,256	2,428	0	2,428	162,684	2.9
Clare	102,154	162,809	177,355	442,318	17,672	75	17,747	460,065	4.5
Cork	253,044	608,692	528,549	1,390,285	**	**	**	1,390,285	4.3
Donegal	48,474	103,088	161,204	312,686	27,124	<	27,124	339,810	2.5
Dún Laoghaire- Rathdown	195,264	209,190	261,492	665,946	53,374	<	53,374	719,320	3.8
Fingal	293,740	279,384	344,097	917,221	93,437	46,280	139,717	1,056,938	5.4
Galway	96,886	166,500	201,774	465,160	16,892	**	16,892	482,052	2.3
Kerry	77,244	106,513	164,885	348,642	**	**	**	348,642	2.6
Kildare	84,419	134,122	230,153	448,694	27,813	2,654	30,467	479,161	2.9
Kilkenny	65,219	96,411	121,932	283,562	24,122	<	24,122	307,684	3.8
Laois	46,081	50,898	76,166	173,145	**	**	14,566	187,711	3.2
Leitrim	18,662	27,662	49,936	96,260	1,087	856	1,943	98,203	3.8
Limerick	77,214	120,964	167,762	365,940	**	**	**	365,940	3.0
Longford	23,566	45,747	38,722	108,035	**	**	**	108,035	3.5
Louth	67,061	99,426	101,392	267,879	13,383	15,807	29,190	297,069	2.9
Mayo	111,810	131,962	254,534	498,306	22,754	8,590	31,344	529,650	4.5
Meath	81,206	85,926	180,889	348,021	22,069	<	22,069	370,090	2.8
Monaghan	23,342	31,655	58,740	113,737	4,443	1,308	5,751	119,488	2.3
Offaly	31,039	59,034	88,945	179,018	3,072	5,342	8,414	187,432	2.9
Roscommon	29,275	49,169	42,211	120,655	5,901	8	5,909	126,564	2.4
Sligo	59,085	92,337	51,419	202,841	155	351	506	203,347	3.5
South Dublin	265,753	283,470	336,621	885,844	88,983	0	88,983	974,827	4.1
Tipperary JLC	82,154	144,973	164,692	391,819	7,693	0	7,693	399,512	2.9
Waterford	31,449	62,275	118,577	212,301	10,564	361	10,925	223,226	3.9
Westmeath	48,662	71,454	106,053	226,169	12,585	0	12,585	238,754	3.3
Wexford	53,612	114,837	160,239	328,688	8,691	0	8,691	337,379	2.9
Wicklow	109,049	158,731	152,602	420,382	25,683	0	25,683	446,065	3.9
<b>Total: 28</b>	<b>2,443,310</b>	<b>3,584,940</b>	<b>4,501,451</b>	<b>10,529,701</b>	<b>498,064</b>	<b>83,533</b>	<b>596,163</b>	<b>11,253,864</b>	<b>3.5</b>
<i>City Councils:</i>									
Cork	192,478	201,413	195,067	588,958	114,073	2,478	116,551	705,509	5.7
Dublin	737,030	802,738	506,477	2,046,245	174,243	162,676	336,919	2,383,164	4.8
Limerick	48,702	61,087	57,424	167,213	17,527	0	17,527	184,740	3.4
Waterford	80,256	93,451	96,221	269,928	58,403	37,567	95,970	365,898	8.2
Total: 4	1,058,466	1,158,689	855,189	3,072,344	364,246	202,721	566,967	3,639,311	5.1
<b>TOTAL: 32</b>	<b>3,501,776</b>	<b>4,743,629</b>	<b>5,356,640</b>	<b>13,602,045</b>	<b>862,310</b>	<b>286,254</b>	<b>1,163,130</b>	<b>14,765,175</b>	<b>3.8</b>

Public Library Statistics, 2004. Table 5.1: REGISTERED MEMBERSHIP												
Authority	(xii) <b>REGISTERED MEMBERSHIP</b>	(xi)	(xiii)	<i>Children</i>	<i>Adults</i>	(xiv) <i>as % of</i>	(xvi)	(xv)	(xvii)	(xix)	(xviii)	(xx)
	<i>Children</i>	<i>Adults</i>	<i>Total</i>	Membership as % of		<i>total resident</i>	Number of items allowed	loan at any one time	Loan	<b>Charges</b>		How
				0-14 pop.	15+ pop	<i>population</i>	<i>Children</i>	<i>Adults</i>	Period (in weeks)	<i>Children</i>	<i>Adults</i>	often registered?
<b>County Councils:</b>												
Carlow	3,417	4,530	7,947	34.0	12.6	17.3	4	6	3	Free	10.00	Annually
Cavan	4,422	4,421	8,843	34.3	10.1	15.6	3	3	3	Free	Free	Annually
Clare	6,502	11,159	17,661	28.4	13.9	17.1	4	8	4	Free	5.00	Annually
Cork	23,854	31,001	54,855	32.8	12.3	16.9	2	4	2	0.50	2.50	Annually
Donegal	6,757	8,808	15,565	20.9	8.4	11.3	6	12	3	Free	Free	Annually
Dún Laoghaire- Rathdown	12,427	37,512	49,939	33.8	24.2	26.0	12	12	3	Free	Free	3Y
Fingal	25,720	60,247	85,967	57.7	39.7	43.8	6	10	3	Free	Free	3Y
Galway	15,093	19,771	34,864	34.7	11.9	16.7	2	3	3	Free	5.00 p.a.	Annually
Kerry	16,575	33,140	49,715	62.0	31.3	37.5	4	6	2	Free	12.00p.a. +	3Y
Kildare	18,920	12,534	31,454	48.6	10.0	19.2	8	10	3	Free	6.00	Annually
Kilkenny	*7,634	*10,000	17,634	*	*	21.9	3	6	3	Free	15.00	Annually
Laois	3,544	3,941	7,485	26.0	8.7	12.7	5	5	3	Free	10.00	Annually
Leitrim	1,849	3,081	4,930	34.1	15.1	19.1	<i>no limit</i>	<i>no limit</i>	4	Free	0.25 PI	Annually
Limerick	7,228	11,151	18,379	28.6	11.6	15.2	3	3	2	Free	Free	Annually
Longford	3,515	2,050	5,565	29.4	14.6	17.9	4	6	3	Free	2.50 p.a.	Annually
Louth	6,999	4,792	11,791	30.3	6.1	11.6	3	3	3	Free	6.50	Annually
Mayo	13,033	12,367	25,400	51.6	13.4	21.6	5	5	3	Free	3.00	Annually
Meath	9,845	12,596	22,441	31.1	12.3	16.7	4	4	2	Free	Free	Annually
Monaghan	2,903	2,869	5,772	24.7	7.0	11.0	3	4	3	Free	3.00	Annually
Offaly	5,080	3,243	8,323	34.3	6.6	13.1	4	6	4	Free	10.00	Annually
Roscommon	2,961	3,712	6,673	25.9	8.8	12.4	3	6	3	Free	3.80	Annually
Sligo	3,887	10,867	14,754	32.2	23.6	25.4	4	4	3	Free	Free	Annually
South Dublin	18,962	37,766	56,728	35.3	20.4	23.8	6	10	3	Free	Free	3Y
Tipperary JLC	8,426	7,418	15,844	27.4	6.8	11.3	4	4	3	Free	5.00 p.a.	Annually
Waterford	6,542	6,334	12,876	51.5	14.3	22.6	3	3	2	Free	7.62	Annually
Westmeath	4,937	7,028	11,965	30.0	12.7	16.7	3	4	3	Free	7.00	Annually
Wexford	6,033	7,839	13,872	22.8	8.7	11.9	6	10	3	Free	5.00	4Y
Wicklow	8,037	16,312	24,349	31.1	18.4	21.2	3	5	3	Free	Free	Annually
<b>Total: 28</b>	<b>253,637</b>	<b>387,954</b>	<b>641,591</b>	<b>35.9</b>	<b>15.6</b>	<b>20.1</b>						
<b>City Councils:</b>												
Cork	6,655	12,685	19,340	31.5	12.4	15.7	6	6	2	Free	12.50	Annually
Dublin *	*21,360	*87,642	*109,002	26.6	21.1	22.0	6	8	3	Free	Free	3Y
Limerick	5,733	4,276	10,009	54.7	9.8	18.5	3	4	2	Free	10.00	Annually
Waterford	5,225	7,253	12,478	57.9	20.4	28.0	10	10	3	Free	10.00	Annually
<b>Total: 4</b>	<b>38,973</b>	<b>111,856</b>	<b>150,829</b>	<b>32.3</b>	<b>18.7</b>	<b>21.0</b>						
<b>TOTAL: 32</b>	<b>292,610</b>	<b>499,810</b>	<b>792,420</b>	<b>35.4</b>	<b>16.2</b>	<b>20.2</b>						

\*Dublin: No breakdown of active membership figure was provided.. 3 year registered membership is Adult: 149,779 Children: 38,771 Total: 188,550



Public Library Statistics, 2004 Table 6: SERVICE POINTS								
	(i)	(ii)	(iii)	(iv)	(v)	(vi)	(vii)	(viii)
	B R A N C H E S (hours open per week)						Total hours open to the public per week	Aggregate opening hours per 1000 resident population
Authority	Over 40	30-39	20-29	10-19	Under 10	TOTAL BRANCHES		
<i>County Councils</i>								
Carlow	1	0	2	0	0	3	91.0	102.8
Cavan	2	1	0	4	5	12	199	183.0
Clare	5	5	2	5	0	17	501	252.3
Cork	11	8	3	6	0	28	917.5	146.9
Donegal	2	6	1	5	3	17	430.0	162.5
Dún Laoghaire –Rathdown	2	6	1	1	0	10	322.5	87.4
Fingal	3	4	0	0	1	8	302	80.0
Galway	1	8	2	14	4	29	546.0	135.8
Kerry	3	6	0	0	0	9	351	137.7
Kildare	1	5	3	7	1	17	374	118.6
Kilkenny	0	4	2	2	0	8	222.0	143.7
Laois	0	1	1	4	7	13	149.5	132.3
Leitrim	2	3	0	3	1	9	234	471.6
Limerick	2	2	2	11	4	21	368	157.8
Longford	1	0	2	3	0	6	151.0	252.7
Louth	0	3	2	0	0	5	155	79.2
Mayo	5	4	8	0	0	17	440	194.8
Meath	3	3	3	3	0	12	343.0	133.1
Monaghan	0	1	1	3	0	5	95	93.9
Offaly	0	1	3	4	1	9	178	145.4
Roscommon	0	3	2	1	1	7	166	160.5
Sligo	1	1	1	2	0	5	133.5	119.3
South Dublin	5	0	1	1	0	7	299.5	65.2
Tipperary JLC	6	2	1	2	2	13	407.00	151.0
Waterford	0	2	1	4	1	8	185.5	169.4
Westmeath	2	1	0	3	0	6	175	126.6
Wexford	0	1	2	1	1	5	101.3	45.2
Wicklow	4	1	0	5	3	13	291.5	132.2
Total: 28	62	82	46	94	35	319	8,128.8	132.1
<i>City Councils</i>								
Cork	2	4	0	0	0	6	230.5	97.4
Dublin	15	8	0	0	0	23	1,045	109.6
Limerick	1	1	0	0	0	2	80.5	77.5
Waterford	2	0	1	0	0	3	120.0	139.9
Total: 4	20	13	1	0	0	34	1,476.0	107
TOTAL: 32	82	95	47	94	35	353	9,604.8	127.5

Public Library Statistics, 2004 Table 6.1 Service Points <i>Continued</i>											
	(ix)	(x)	(xi)	(xii)	(xiii)	(xiv)	(xv)	(xvi)	(xvii)	(xviii)	TOTAL NO OF SERVICE POINTS
	No. of computerised service points				CENTRES	OTHER	MOBILE LIBRARIES				
	Branches with automated systems	Number of OPACs	Branches with Internet access	No. of public Internet terminals		SERVICE POINTS	No. of units	Hours	per schedule of x weeks	Number of stops	
<b>County Councils</b>											
Carlow	2	3	3	10	0	0	0				3
Cavan	2	0	7	14	2	0	0				14
Clare	17	106	17	100	0	0	0				17
Cork	10	0	27	65	0	0	6	**	2	494	34
Donegal	10	63	12	63	8	0	1	13	1	12	26
Dún Laoghaire - Rathdown	9	14	9	44	0	0	0				10
Fingal	8	22	8	80	0	40	3	49	1	46	51
Galway	8	21	29	86	7	0	1	17	2	65	37
Kerry	9	17	9	36	17	10	2	20	2	37	38
Kildare	8	6	15	41	0	0	1	24	2	29	18
Kilkenny	5	23	7	23	3	3	1	28	3	60	15
Laois	2	2	10	21	0	0	0	0	0	0	13
Leitrim	9	11	9	28	0	0	0				9
Limerick	5	6	11	30	5	0	2	27	2	63	28
Longford	6	8	6	13	0	1	0	0	0	0	7
Louth	5	40	3	40	0	0	1	16.5	2	44	6
Mayo	8	25	16	80	0	8	1		2	50	26
Meath	11	10	12	52	4	0	0				16
Monaghan	3	1	3	14	0	0	1	21	2	45	6
Offaly	5	0	9	48	2	0	0				11
Roscommon	5	0	6	17	8	0	0				15
Sligo	5	45	5	45	1	0	0				6
South Dublin	7	11	7	42	0	0	4	208	4	152	11
Tipperary JLC	5	3	13	46	0	0	0	0	0	0	13
Waterford	8	30	8	30	0	0	0				8
Westmeath	6	9	6	34	2	0	0				8
Wexford	5	16	5	18	0	0	2	23	2	107	7
Wicklow	9	5	13	29	1	20	1	32	2	33	35
<b>Total: 28</b>	<b>192</b>	<b>497</b>	<b>285</b>	<b>1,149</b>	<b>60</b>	<b>82</b>	<b>27</b>			<b>1,237</b>	<b>488</b>
<b>City Councils</b>											
Cork	6	17	6	56	0	0	1	13	1	2	7
Dublin	24	50	24	126	38	569	2	42	**	25	632
Limerick	2	2	2	16	0	1	1	20	**	20	4
Waterford	3	50	3	50	0	0	0				3
<b>Total: 4</b>	<b>35</b>	<b>119</b>	<b>35</b>	<b>248</b>	<b>38</b>	<b>570</b>	<b>4</b>			<b>47</b>	<b>646</b>
<b>TOTAL: 32</b>	<b>227</b>	<b>616</b>	<b>320</b>	<b>1,397</b>	<b>98</b>	<b>652</b>	<b>31</b>			<b>1,284</b>	<b>1,134</b>

Public Library Statistics, 2004. Table 6.2: Agency Services																
	(i)	(ii)	(iii)	(iv)	(v)	(vi)	(vii)	(viii)	(ix)	(x)	(xi)	(xii)	(xiii)	(xiv)	(xvi)	(xvii)
	Number of establishments served				No. of staff employed				Gross expenditure				No. of volumes on loan			
	Education	Prisons	Hospitals	Other	TOTAL	Education	Prisons	Total	Education	Prisons	Hospitals	Total	Prisons	Hospitals	Other	TOTAL
<i>County Councils:</i>																
Carlow	0	0	0	0	0	0	0	0	0	0	0	0	0	0	0	0
Cavan		1	0	0	1	0	1	1	0	6,012	0	6,012	0	1,659	0	1,659
Clare	0	0	0	0	0	0	0	0	0	0	0	0	0	0	0	0
Cork	0	0	0	0	0	0	0	0	0	0	0	0	0	0	0	0
Donegal	0	0	0	0	0	0	0	0	0	0	0	0	0	0	0	0
Dún Laoghaire - Rathdown	0	0	0	0	0	0	0	0	0	0	0	0	0	0	0	0
Fingal	0	0	0	0	0	0	0	0	0	0	0	0	0	0	0	0
Galway	0	0	0	0	0	0	0	0				0				0
Kerry	0	0	0	0	0	0	0	0	0	0	0	0	0	0	0	0
Kildare	0	0	0	0	0	0	0	0	0	0	0	0	0	0	0	0
Kilkenny	0	0	0	0	0	0	0	0	0	0	0	0	0	0	0	0
Laois	0	1	0	0	1	0	0	0	0	5,000	0	5,000	0	0	0	0
Leitrim	0	0	0	0	0	0	0	0	0	0	0	0	0	0	0	0
Limerick	0	0	0	0	0	0	0	0	0	0	0	0	0	0	0	0
Longford	0	0	0	0	0	0	0	0	0	0	0	0	0	0	0	0
Louth	0	0	1	1	2	0	0	0	0	0	0	0	0	70	150	220
Mayo	0	0	0	0	0	0	0	0	0	0	0	0	0	0	0	0
Meath	0	0	0	0	0	0	0	0	0	0	0	0	0	0	0	0
Monaghan	0	0	0	0	0	0	0	0	0	0	0	0	0	0	0	0
Offaly	0	0	0	0	0	0	0	0	0	0	0	0	0	0	0	0
Roscommon	0	0	0	0	0	0	0	0	0	0	0	0	0	0	0	0
Sligo		0	0	0	0	0	0	0	0	0	0	0	0	0	0	0
South Dublin	0	0	0	0	0	0	0	0	0	0	0	0	0	0	0	0
Tipperary JLC	0	0	0	0	0	0	0	0	0	0	0	0	0	0	0	0
Waterford	0	0	0	0	0	0	0	0	0	0	0	0	0	0	0	0
Westmeath	0	0	0	0	0	0	0	0	0	0	0	0	0	0	0	0
Wexford	0	0	0	0	0	0	0	0	0	0	0	0	0	0	0	0
Wicklow	0	0	0	0	0	0	0	0	0	0	0	0	0	0	0	0
Total: 28	0	2	1	1	4	0	1	1	0	11,012	0	11,012	0	1,729	150	1,879
<i>City Councils</i>																
Cork	0	1	0	0	1	0	0	0	0	1,900	0	1,900	0	0	0	0
Dublin	0	8	0	0	8	0	3	3	0	129,907	0	129,907	**	0	0	0
Limerick	0	0	0	0	0	0	0	0	0	0	0	0	0	0	0	0
Waterford	0	0	0	0	0	0	0	0	0	0	0	0	0	0	0	0
Total: 4	0	9	0	0	9	0	3	3	0	131,807	0	131,807	0	0	0	0
TOTAL: 32	0	11	1	1	13	0	4	4	0	142,819	0	142,819	0	1,729	150	1,879

PUBLIC LIBRARY STATISTICS, 2004. Table 7: SERVICES TO SCHOOLS - Number of schools and pupils served.												
	(i)	(ii)	(iii)	(iv)	(v)	(vi)	(vii)	(viii)	(ix)	(x)	(xi)	(xii)
	NUMBER OF SCHOOLS SERVED						PUPIL POPULATION SERVED					
Authority	Primary	Secondary	Vocational	Comprehensive	Community	TOTAL	Primary	Secondary	Vocational	Comprehensive	Community	TOTAL
<i>County Councils:</i>												
Carlow	38	0	0	0	0	38	5,534	0	0	0	0	5,534
Cavan	79	0	0	0	0	79	7,590	0	0	0	0	7,590
Clare	120	0	0	0	0	120	5,536	0	0	0	0	5,536
Cork	301	0	0	0	0	301	36,147	0	0	0	0	36,147
Donegal	174	0	0	0	0	174	17,742	0	0	0	0	17,742
Dún Laoghaire - Rathdown	66	0	0	0	0	66	16,642	0	0	0	0	16,642
Fingal	82	0	0	0	0	82	22,880	0	0	0	0	22,880
Galway	233	0	0	0	0	233	23,769	0	0	0	0	23,769
Kerry	148	0	0	0	0	148	14,690	0	0	0	0	14,690
Kildare	100	0	0	0	0	100	21,659	0	0	0	0	21,659
Kilkenny	77	4	0	0	0	81	9,344	1,450	0	0	0	10,794
Laois	70	0	0	0	0	70	7,207	0	0	0	0	7,207
Leitrim	41	0	0	0	0	41	3,014	0	0	0	0	3,014
Limerick	116	0	0	0	0	116	13,391	0	0	0	0	13,391
Longford	40	0	0	0	0	40	3,768	0	0	0	0	3,768
Louth	73	0	0	0	0	73	12,782	0	0	0	0	12,782
Mayo	187	0	0	0	0	187	13,628	0	0	0	0	13,628
Meath	110	4	0	0	0	114	17,432	0	0	0	0	17,432
Monaghan	64	0	0	0	0	64	6,301	0	0	0	0	6,301
Offaly	68	0	0	0	0	68	8,470	0	0	0	0	8,470
Roscommon	95	4	2	0	0	101	6,207	3,401	496	0	0	10,104
Sligo	69	0	0	0	0	69	6,661	0	0	0	0	6,661
South Dublin	95	0	0	0	0	95	27,410	0	0	0	0	27,410
Tipperary JLC	144	0	0	0	0	144	16,700	0	0	0	0	16,700
Waterford	56	0	0	0	0	56	6,415	0	0	0	0	6,415
Westmeath	77	0	0	0	0	77	9,468	0	0	0	0	9,468
Wexford	105	0	0	0	0	105	15,308	0	0	0	0	15,308
Wicklow	85	0	0	0	0	85	13,679	0	0	0	0	13,679
Total: 28	2,913	12	2	0	0	2,927	369,374	4,851	496	0	0	374,721
<i>City Councils:</i>												
Cork	62	0	0	0	0	62	15,256	0	0	0	0	15,256
Dublin	225	0	0	0	0	225	45,067	0	0	0	0	45,067
Limerick	30	0	0	0	0	30	6,932	0	0	0	0	6,932
Waterford	22	0	0	0	0	22	5,567	0	0	0	0	5,567
Total 4	339	0	0	0	0	339	72,822	0	0	0	0	72,822
<b>TOTAL:32</b>	<b>3,252</b>	<b>12</b>	<b>2</b>	<b>0</b>	<b>0</b>	<b>3,266</b>	<b>447,494</b>	<b>4851</b>	<b>496</b>	<b>0</b>	<b>0</b>	<b>447,543</b>

PUBLIC LIBRARY STATISTICS, 2004. Table 7.1: SERVICES TO SCHOOLS - Stock and issues								Nos.
	(xiii)	(xiv)	(xv)	(xvi)	(xvii)	(xviii)	(xix)	(xx)
	S T O C K			Items per head of pupil pop.	I S S U E S			Issues per head of pupil pop.
	Books	Multimedia	TOTAL		Books	Multimedia	TOTAL	
<i>County Councils:</i>								
Carlow	**	0	0	0.0	**	0	0	0.0
Cavan	28,312	0	28,312	3.7	11,702	0	11,702	1.5
Clare	0	0	0	0.0	not counted	0	0	0.0
Cork	19,572	0	19,572	0.5	18,176	0	18,176	0.5
Donegal	0	0	0	0.0	**	0	0	0.0
Dún Laoghaire - Rathdown	101,088	54	101,142	6.1	**	0	16,112	1.0
Fingal	30,852	909	31,761	1.4	20,631	359	20,990	0.9
Galway	125,557	0	125,557	5.3	**	0	0	0.0
Kerry	142,439	921	143,360	9.8	**	0	427,316	29.1
Kildare	14,542	0	14,542	0.7	**	0	11,631	0.5
Kilkenny	70,000	2,000	72,000	6.7	190,000	10,000	200,000	18.5
Laois	0	0	0	0.0	55,917	0	55,917	7.8
Leitrim	**	0	0	0.0		0	0	0.0
Limerick	**	0	0	0.0	**	0	0	0.0
Longford	51,498	0	51,498	13.7	45,342	0	45,342	12.0
Louth	50,322	630	50,952	4.0	33,100	487	33,587	2.6
Mayo	150,121	4,831	154,952	11.4	34,517	0	34,517	2.5
Meath	**	0	0	0.0	**	0	0	0.0
Monaghan	20,220	0	20,220	3.2	15,395	0	15,395	2.4
Offaly	49,228	0	49,228	5.8	11,116	0	11,116	1.3
Roscommon	34,716	0	34,716	3.4	246,560	0	246,560	24.4
Sligo	11,630	0	11,630	1.7	19,183	0	19,183	2.9
South Dublin	119,283	0	119,283	4.4	15,262	0	15,262	0.6
Tipperary JLC	0	0	0	0.0		0		0.0
Waterford	34,521	0	34,521	5.4	39,510	0	39,510	6.2
Westmeath	45,661	0	45,661	4.8	10,080	0	10,080	1.1
Wexford	9,545	102	9,647	0.6	1,545	0	1,545	0.1
Wicklow	51,991	0	51,991	3.8		0	0	0.0
Total: 28	1,161,098	9,447	1,170,545					
<i>City Councils:</i>								
Cork	137,116	0	137,116	9.0	7,750	0	7,750	0.5
Dublin	243,079	1,341	244,420	5.4	885,720	0	885,720	19.7
Limerick	89,869	0	89,869	13.0	68,080	0	68,080	9.8
Waterford	0	0	0	0.0	0	0	0	0.0
Total: 4	470,064	1,341	471,405					
TOTAL:32	1,631,162	10,788	1,641,950					

### Notes on the 2004 returns

A small number of authorities are unable to supply detailed data as requested). An Chomhairle has used other data at its disposal to apply weightings to these figures in order to provide a more accurate picture. The weightings relate mainly to, collections, issues and membership figures. All data substituted by An Chomhairle has been printed in green.

*Table 1: Income* remains the same as for previous years. Details of capital income as notified by the contributing authorities is contained on Table 2.2.

Grants from the Department of the Environment, Heritage & Local Government made have been designated as Capital for the purposes of this publication. Where authorities omitted receipt of these funds, the amount has been supplied by An Chomhairle Leabharlanna (see Table 2)

*Table 3: Staffing* has been simplified to make the table more easily readable. It no longer contains details of grades by location (headquarters, branches or other service points). This information is still available on request from An Chomhairle.

Authorities are asked to provide details of staff complement as full-time equivalents (FTE). As some authorities supply details of staff in post rather than staff complement this has led to some fluctuation in the returns. The number of Branch Librarians was usually given in the returns as an actual number rather than as FTE although for 2003 onwards the convention of expressing posts as full-time equivalents has been strictly implemented hence the apparent reduction in para-professional posts (includes branch librarians). Some authorities do not count library support staff, such as cleaners, as the part of the library's staff complement. These two changes are reflected in the apparent decrease in staffing for 2003. The 2003 figures accordingly present a more accurate picture of current staffing levels.

Similarly, *Table 4: Collections - books and serials* and *Table 4.2: Collections - non-book materials* no longer categorizes withdrawn stock items. They now give the total figure per authority. The full set of information is still available on request from An Chomhairle.

#### *Table 5.1: Registered membership figures*

In 2001 the definition of 'number of registered members' was redefined to 'number of active members', an active member being someone who had borrowed at least one item during the period January 1st to December 31<sup>st</sup>. This redefinition was introduced in order to eliminate the perceived advantage of having long registration cycles, resulting in membership files which included an unknown number of lapsed users. The change in definition produced a decrease in the number of reported membership figures in those authorities whose registration cycles exceeded one year. The change in definition was introduced in an attempt to present a more complete picture of registered membership.

*Table 6: Service points* includes data on the number of service points with online public access catalogues (Opacs) and Internet access. In both cases, the number of available terminals is also given.

This Table also gives details of the overall, planned opening hours per week for the branch libraries.

*Table 6.1: Agency services* contains information on services provided by public library authorities to other organisations, usually on a cost recovery basis.

*Table 7* details library services to schools as provided by the library authority.



**Appendix 1: Population tables from 1996 and 2002 Censuses**

AUTHORITY	1996			2002			% change on 1996
	Population 0-14	Population 15+	Total population	Population 0-14	Population 15+	Total population	
Counties							
Carlow	10,284	31,332	41,616	10,063	35,951	46,014	10.6
Cavan	13,445	39,499	52,944	12,891	43,655	56,546	6.8
Clare	23,465	70,541	94,006	22,874	80,403	103,277	9.9
Cork	72,439	220,884	293,323	72,697	252,070	324,767	10.7
Donegal	33,180	96,814	129,994	32,255	105,320	137,575	5.8
Dún Laoghaire-Rathdown	39,617	150,382	189,999	36,757	155,035	191,792	0.9
Fingal	45,752	121,931	167,683	44,592	151,821	196,413	17.1
Galway	44,621	144,233	188,854	43,478	165,599	209,077	10.7
Kerry	29,832	96,298	126,130	26,714	105,813	132,527	5.1
Kildare	35,772	99,220	134,992	38,909	125,035	163,944	21.4
Kilkenny	18,640	56,696	75,336	18,079	62,260	80,339	6.6
Laois	13,623	39,322	52,945	13,656	45,118	58,774	11.0
Leitrim	5,847	19,210	25,057	5,422	20,377	25,799	3.0
Limerick	27,259	85,744	113,003	25,303	95,978	121,281	7.3
Longford	7,512	22,654	30,166	6,975	24,093	31,068	3.0
Louth	22,424	69,742	92,166	23,075	78,746	101,821	10.5
Mayo	27,438	84,086	111,524	25,281	92,165	117,446	5.3
Meath	28,607	81,125	109,732	31,666	102,339	134,005	22.1
Monaghan	13,200	38,113	51,313	11,774	40,819	52,593	2.5
Offaly	15,018	44,099	59,117	14,799	48,864	63,663	7.7
Roscommon	12,307	39,668	51,975	11,417	42,357	53,774	3.5
Sligo	12,927	42,894	55,821	12,089	46,111	58,200	4.3
South Dublin	59,294	159,434	218,728	53,671	185,164	238,835	9.2
Tipperary JLC	32,537	100,998	133,535	30,707	109,424	140,131	4.9
Waterford	12,667	39,473	52,140	12,700	44,252	56,952	9.2
Westmeath	15,745	47,569	63,314	16,444	55,414	71,858	13.5
Wexford	25,884	78,487	104,371	26,515	90,081	116,596	11.7
Wicklow	25,585	77,098	102,683	25,826	88,850	114,676	10.6
Total: 28	724,921	2,197,546	2,922,467	706,629	2,493,114	3,199,743	9.5
Cities							
Cork	25,735	101,452	127,187	21,135	101,927	123,062	-3.2
Dublin	88,031	393,823	481,854	80,172	415,609	495,781	2.9
Limerick	11,177	40,862	52,039	10,475	43,548	54,023	3.8
Waterford	9,560	32,980	42,540	9,017	35,577	44,594	4.8
Total: 4	134,503	569,117	703,620	120,799	596,661	717,460	2.0
TOTAL: 32	859,424	2,766,663	3,626,087	827,428	3,089,775	3,917,203	8.0