

Public Library
Authority Statistics

ACTUALS

2005



AN CHOMHAIRLE LEABHARLANNA
The Library Council

An Chomhairle Leabharlanna was established by the *Public Libraries Act, 1947*. The functions of the Council, as outlined in the *Local Government Act, 2001* are:

- to provide advice and assistance to local authorities in relation to the improvement of the public library service
- to make such recommendations to the Minister in relation to the public library service as it sees fit
- to maintain and operate the central library established under Section 2 of the *Public Libraries Act, 1947 (No.40 of 1947)*
- to promote and facilitate library co-operation

Statistical series issued by An Chomhairle Leabharlanna:

Public Library Authorities Annual Estimates of Expenditure

Public Library Authority Statistics - Actuals. (Annual)

Public Library Statistics: an Analysis of Trends in relation to Irish Public Libraries.

Statistical data on Irish public libraries also appears in:

Statistical Abstract / Central Statistics Office. - Dublin: Stationery Office (Annual)

Public Library Statistics - Actuals. - London: CIPFA, (Annual)

Public Library Statistics -Estimates. - London: CIPFA, (Annual)

Cover: Three libraries opened in 2005. They are, clockwise from top right:

- Tory Top Library, Cork City Council
- Tullow Library & Civic Centre, Carlow County Council
- Ballinamore Branch Library & County Library Headquarters, Leitrim County Council

Public Library Authority Actuals 2005

Introduction	1-3
Comparison between 2004 and 2005	4-6
Summary 2001-2005	7-10
Charts	
1: Expenditure under individual budget headings shown as a % of total expenditure 2005	5
2: Expenditure on stock, 2001-2005	7
3: Books in stock, 2001-2005	8
4: Additions and withdrawals, 2001-2005	8
5: Loans, 2001-2005	9
6: Registered membership, 2001-2005	9
7: Service points by hours open per week (%)	10
Summary tables, 2001-2005	11-13
1: Income: recurrent and capital	11
1.1: Department of the Environment, Heritage & Local Government's capital allocations	11
2: Expenditure: recurrent and capital	11
3: Staffing	12
4: Collections	12
5: Issues	12
5.1: Registered membership	12
6: Service points	13
7: Services to schools	13
7.1: National primary school pupil population	13
Tables 2005	
1: Income	14
1.1 Capital Income	15
1.2: Department of the Environment, Heritage & Local Government Capital Grant Allocations	16
2: Expenditure - Salaries and stock	17
2.1: Expenditure (<i>continued</i>) - Premises, transport, etc.	18
2.2: Capital Expenditure	19
3: Staffing	20
3.1: Staffing - Dún Laoghaire Rathdown County	21
3.2: Staffing - Fingal County	21
3.3: Staffing - South Dublin County	21
3.4: Staffing - Dublin City	21
4: Collections - Books and serials	22
4.1: Collections - Multimedia	23
4.2: Collections - Multimedia - additions and withdrawals	24
5: Issues	25
5.1: Registered membership	26
6: Service points	27
6.1 Service points (<i>continued</i>)	28
6.2: Agency services	29
7: Services to schools - Number of schools and pupils served	30
7.1: Services to schools - Stock and issues.	31
Notes on the 2005 returns	32
Population tables from 1996 and 2002 censuses	33

INTRODUCTION

An Chomhairle Leabharlanna is pleased to publish the annual analysis of the statistical returns provided by the 32 library authorities in Ireland on public library expenditure (actuals) for the year 2005.

Branching Out, the government's policy document for the future of the public library service, was launched by the Minister for the Environment and Local Government in 1998. This report on library authority statistical returns for 2005 provides a snapshot of the previous five years of the *Branching Out* programme of development and fuller details of 2005.

Over the five year period to 2005, local authorities have increased their investment in library services. This report records that users have availed of library services with longer opening hours, more stock, higher volumes of lending and access to expert staff in more service points. An Chomhairle acknowledges this support for the public library service.

The main highlights since 2001 are:

- Total expenditure (recurrent and capital) increased by 48% from €77 million to €113.7 million giving a five year total of €478.5 million
- Recurrent expenditure increased by 49% from €66 million to €98.6 million giving a five year total of €410.2 million
- Capital expenditure reported by public library authorities increased by 37% from €11 million to €15 million giving a five year total of €68.3 million
- Current expenditure on books and multimedia materials increased by 30% from €10.6 million to €13.8 million. This represents a five year total of €59 million

- Recurrent income increased by 53% from €65.7 million in 2001 to €100.6 million in 2005
- The nett library stock increased overall by 5.6% to a total of 12.9 million items. The trend is towards providing a wider range of formats. Multimedia stock increased by 21% from 0.39 million to 0.48 million whereas collections of books have increased by 5% from 11.9 million to 12.5 million volumes. Total loans (books + multimedia) recorded an overall increase of 12.6% from 12.8 million to 14.5 million.
- Regular library users increased their annual borrowing from 16 to 19 items per annum. The number of items borrowed per head of the total population also increased from 3.4 to 3.8 per annum.

More service points and a wider range of options for usage is a particularly welcome improvement. The number of branch libraries in Ireland increased from 338 to 351.

The number of hours that they are open to the public per week has increased by 14% (from 8,497 to 9,723). The number of libraries with public access Internet points increased by 51 to 330. Staffing levels improved.

- The number of public access Internet terminals increased from 1,127 to 1,449
- Overall staffing levels rose from 1,483 to 1,649

There are challenges to be addressed in order to make the public library service open and welcoming spaces in all communities. Particular attention is drawn to the following concerns:

- **Charges** for use of the library can be a barrier to joining. In 2005, 21 authorities levied an annual charge on adult members ranging from €2.50 to €15.00 per annum.
- Flexible **opening** times with improved lunch-time, evening and weekend services are required in a number of authorities.

- Improved **expenditure on stock** remains crucial. Nine out of thirty two authorities equalled or exceeded the
- recommended target figure set out by the *Branching Out* Steering Group of €3.27 per capita.
- Improved **staffing** levels are a particular requirement.
- **Collection development** policies which address the needs of a changing Ireland and acknowledge the increasing importance of multi media stock are urgently required

An Chomhairle thanks Mayors, Members, County and City Managers and County and City Librarians and staff of the public library authorities the Department of the Environment, Heritage and Local Government for their continuing support and for their assistance in compiling these figures. An Chomhairle acknowledges the support of the Department of Education and Science in providing data relating to the Primary School Library Grant Scheme.

Norma Mc Dermott

Norma McDermott
Director

2004 TO 2005

Irish local authority public library service statistics record a continuing upward trend of service provision in the communities they serve.

An Chomhairle Leabharlanna acknowledges the continuing support of library authorities in delivering a better service and the value of the capital grants programme initiated by the Minister for the Environment, Heritage and Local Government.

In national terms and in comparison with the previous year, the returns from public library authorities for 2005 reflect an upturn in most areas of activity.

The major changes are as follows:

Income

- Recurrent income increased by 12% from €89,710,317 to €100,612,353
- Capital income reported by public library authorities increased by 58% from €7,738,614 to €12,243,026
- Combined recurrent and capital incomes reported by local authorities increased by 16% from €97,448,931 to €112,855,379.
- This represents an increase in the per capita figure from €24.88 to €28.81 for total income

Expenditure

- Recurrent expenditure has risen by 11% from €88,821,984 to €98,602,596.
- Expenditure on staff rose by 11% from €52.5 million to €58.2 million
- Expenditure on stock has risen by 13% from €12,175,774 to €13,792,665 or from €3.11 per head of population to €3.52
- Expenditure on stock in 2005 accounted nationally for 14% of the overall budget

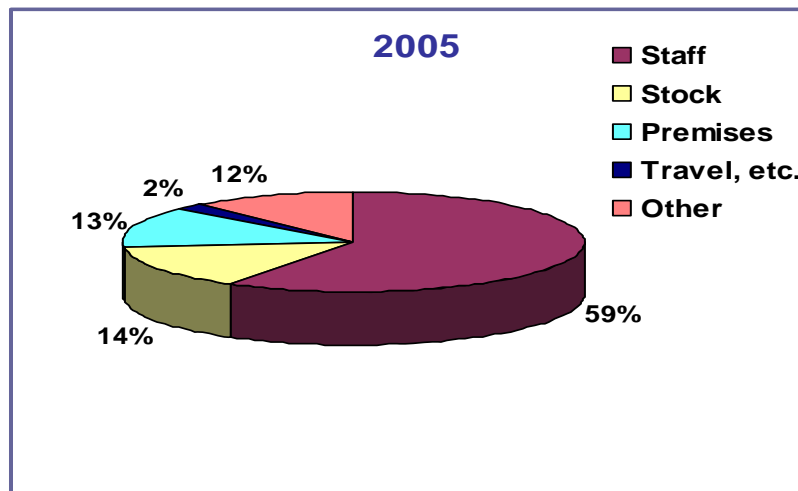


Chart 1: Expenditure under individual budget headings shown as a % of total expenditure 2005

- Capital expenditure in public library authorities decreased by 1% from €15,313,075 to €15,122,291
- The Department of the Environment, Heritage and Local Government provided capital grants totalling €13.9 million which included €9.6 million for library buildings, mobile libraries and delivery vans, €0.7 million subsidy on leases, and €2.9 million from the Information Society Fund for service development.
- Total local authority expenditure on libraries (recurrent and capital) increased by 9% from €104,135,059 to €113,724,887
- Total per capita expenditure increased from €26.58 to €29.03.

Collections

Figures for 2005 recorded an increased collection in material in alternative formats (e.g. multimedia) and in the number of print based materials being added to stock, as compared with 2004:

- Public libraries collectively hold just over 12.9 million items of stock
- 1,082,588 new items of stock were added during 2005
- Multimedia additions rose by 31% from 53,291 to 69,954

- 1,012,634 books were added to stock – an increase of 6% over the 2004 figure of 952,340
- 882,778 books were withdrawn in 2005

Issues

- Total items loaned decreased by 2% from 14,765,175 to 14,503,021
- Multimedia issues increased by 11% from 1,163,130 to 1,290,080
- Book issues fell by 3% from 13,602,045 to 13,212,941

Membership

- Registered membership decreased by 2% from 792,420 to 778,421
- The percentage of the population registered as members of the public library service fell from 20.2% to 19.9%.
- Children's membership fell by 0.8% from 292,610 to 290,340
- Adult membership decreased by 2.3% from 499,810 to 488,081

Service points

- The total number of branch libraries open to the public has increased from 349 to 351
- 79 libraries are open to the public for more than 40 hours per week, compared to 76 in the previous year
- The overall number of hours open to the public has increased by 118 per week, or 1%, from 9,605 to 9,723
- 330 or 94% of the total of 351 branches provide public access to the Internet via 1,449 dedicated terminals
- The number of branches providing online public access terminals to the catalogue increased by 26 from 227 to 253

2001-2005

Income (see Summary Table 1)

- Recurrent income increased by 53% from €65.7 million in 2001 to €100.6 million in 2005
- Income from non-capital grants increased overall by 38.5% from €3.1 million to €4.3 million.

Expenditure (see Summary Table 2)

- Recurrent expenditure increased by 49.4% from €66 million to €99 million giving a five year total of €410 million
- Current expenditure on stock increased by 30% from €11 million to €14 million. This represents a five year total of €59 million

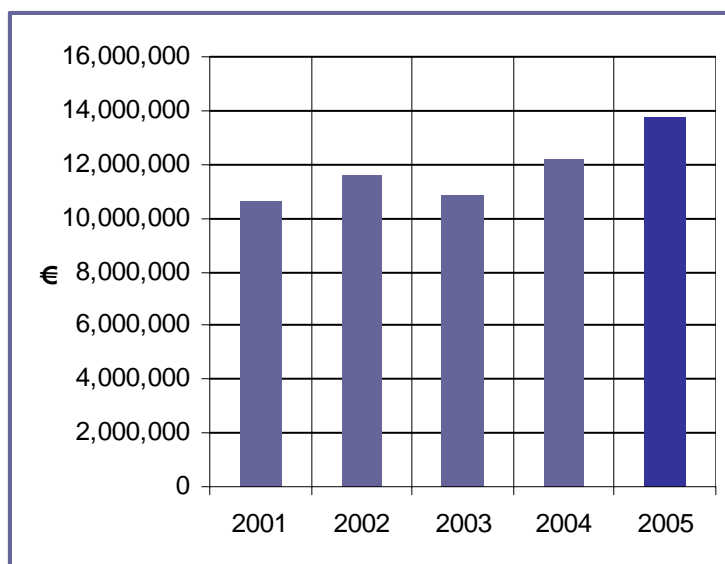


Chart 2: Expenditure on stock, 2001-2005

- Capital expenditure reported by public library authorities increased by 37% from €11 million to €15 million giving a five year total of €68.3 million:
- Total expenditure (recurrent and capital) increased by 48% from €77 million to €114 million giving a five year total of €478.5 million:

Collections (see Summary Table 4)

- Multimedia stock increased by 21% from 393,657 to 475,627 in the five years to 2005

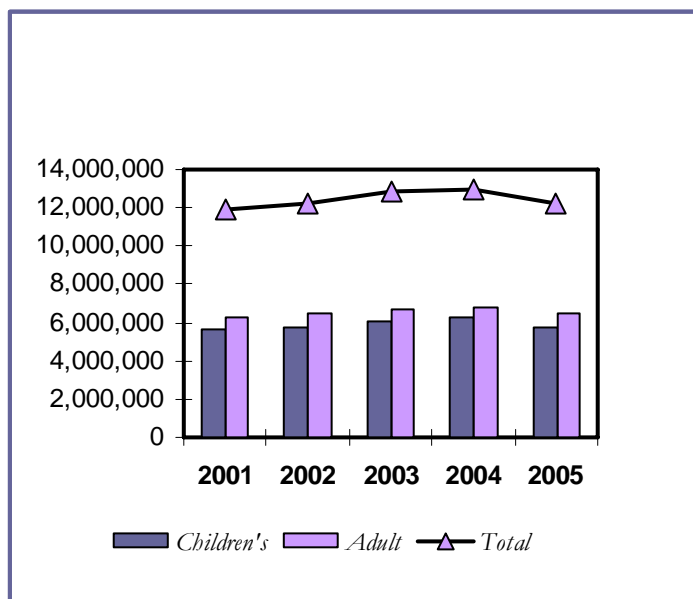


Chart 3: Book stock, 2001-2005

- Collections of books have increased by 5% from 11.9 million to 12.5 million

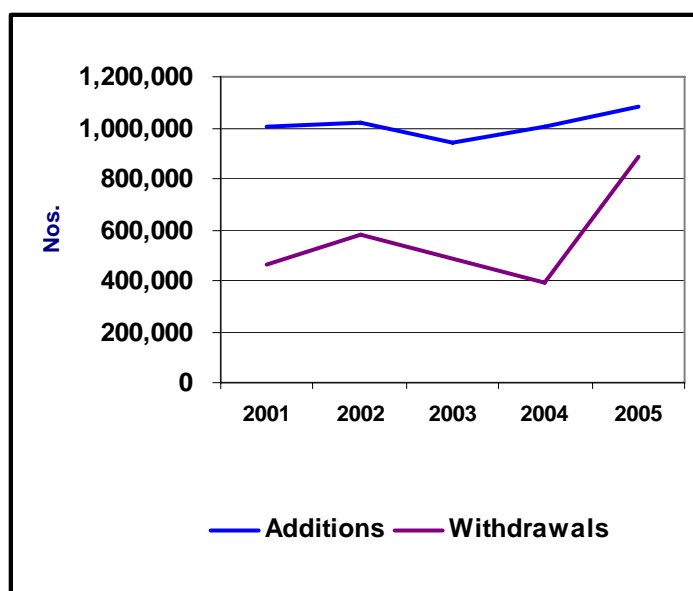


Chart 4: Stock additions and withdrawals, 2001-2005

Loans (see Summary Table 5)

- Multimedia stock loans showed an increase of 86% from 0.69 to 1.3 million.
- Book loans showed an increase of 8% from 12 million to 13.2 million

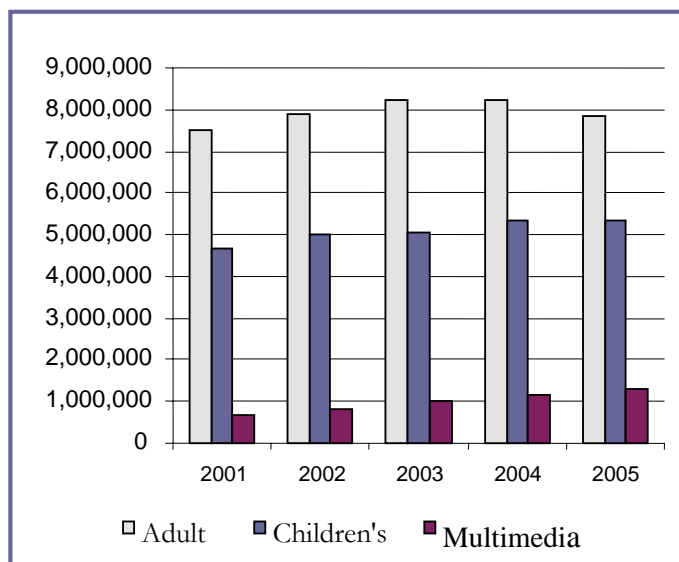


Chart 5: Loans, 2001-2005

- Total loans (books + multimedia) recorded an overall increase of 13% from 13 million to 14.5 million

Membership (see Summary Table 5.1)

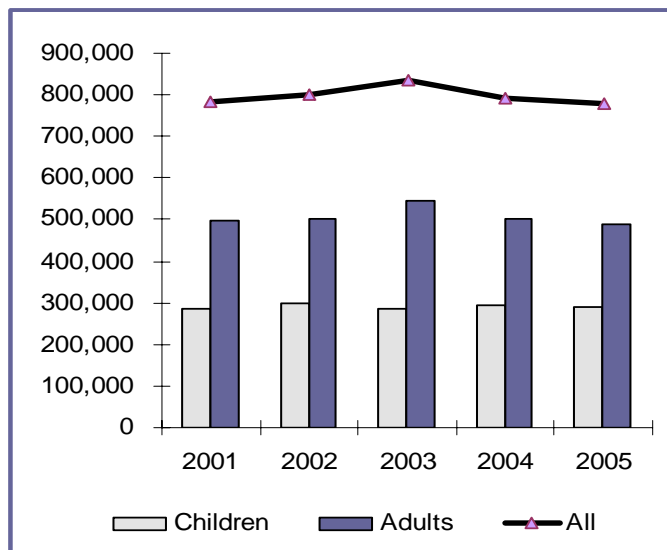


Chart 6: Membership, 2001-2005

- Registered membership decreased by 0.6% from 783,341 to 778,421
- The percentage of the population registered as members of the public library service fell from 22% to 20%.
- Children's membership has increased by 1.5% from 285,970 to 290,340.
- Adult membership decreased by 2% from 497,371 to 488,081.

Service points (see Summary Table 6)

- The total number of branch libraries increased by 13 since 2001
- Opening hours per week are now 14% higher than in 2001

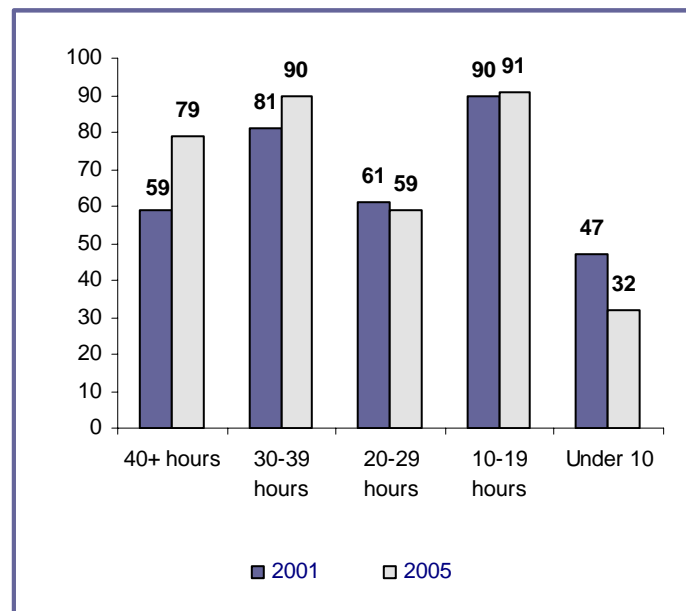


Chart 7: Service points x number of hours open per week

- The number of branch libraries open for more than 40 hours per week increased by 20 since 2001
- The number of mobile library units remained at 29

SUMMARY TABLES, 2001-2005

Summary table 1: Income: recurrent and capital (€)

Recurrent income	2001	2002	2003	2004	2005	% change over 2001	% change over 2004
Total	65,670,751	76,544,207	81,417,857	89,710,317	100,612,353	+53.2	+12.2
Per capita	18.11	19.54	20.78	22.90	25.68		
Capital income ⁽¹⁾	5,650,541	10,313,018	10,696,233	7,738,614	12,243,026	+116.7	+58.2
Total income (recurrent plus capital)	71,321,292	86,857,225	92,114,090	97,448,931	112,855,379	+58.2	+15.8
Per capita	19.67	22.17	23.52	24.88	28.81		

Note: ⁽¹⁾ Includes capital grants made by the Minister for the Environment, Heritage and Local Government from National Lottery Funds.

The capital income returns are as notified by local authorities.

Summary table 1.2: Department of the Environment, Heritage and Local Government's capital allocations (€)

	2001	2002	2003	2004	2005
Buildings & vehicles	4,091,874	5,135,841	9,514,962	8,525,908	13,959,732.34
Subsidy [Leases & loans]	1,120,896	963,902	875,019	^	^
Information Society	568,287	1,738,446	2,108,725	^	^
Stock	1,269,692	14,071	0	^	^
Additional funds	123,671	424,160	188,062	^	^
TOTAL	7,174,420	8,276,420	12,686,768	8,525,908	13,959,732.34

Data supplied by the Department of the Environment, Heritage and Local Government.

Summary table 2: Expenditure: recurrent and capital (€)

Recurrent expenditure	2001	2002	2003	2004	2005	% change over 2001	% change over 2004
Total	66,004,561	76,461,180	80,304,838	88,821,984	98,602,596	+49.4	+11
Per capita: Acquisitions	2.93	2.96	2.77	3.11	3.52		
Total	18.20	19.52	20.50	22.67	25.17		
Capital expenditure	11,051,287	13,386,666	13,410,572	15,313,075	15,122,291	+36.8	- 1.2
Total expenditure (recurrent plus capital)	77,055,848	89,847,846	93,715,410	104,135,059	113,724,887	+47.6	+9.2
Per capita	21.25	22.94	23.92	26.58	29.03		

Summary table 3: Staffing* (Nos.)

	2001	2002	2003	2004	2005
Professional	336	354	366	372	376
Para-professional	931	963	1,015	1,044	1,060
Support	216	214	215	211	213
Total	1,483	1,532	1,596	1,627	1,649

* see *Notes on the 2005 returns* (Page 32)

Summary table 4: Collections (Nos.)

	2001	2002	2003	2004	2005	% change over 2001	% change over 2004
Books:	11,869,969	12,263,766	12,808,043	12,966,368	12,474,087*	+5.1%	- 3.8%
Multimedia items:	393,657	398,320	424,632	419,096	475,627	+20.8%	+13.5 %
Additions to stock:							
Books	966,338	970,641	891,751	952,340	1,012,634	+4.8%	+6.3%
Multimedia items	37,456	45,188	51,805	53,291	69,954	+87%	+31.3%
Additions per head of population:	0.3	0.3	0.2	0.3	0.3		
Withdrawals:							
Books	459,068	582,730	484,448	389,669	882,778	+92.3%	+126.5%
Multimedia items	6,963	10,406	11,792	16,034	11,270	+61.9	-29.7

* see *Notes on the 2005 returns* (Page 32)

Summary table 5: Issues (Nos.)

Books	2001	2002	2003	2004	2005	% change over 2001	% change over 2004
Children's	4,656,617	5,027,299	5,063,642	5,356,640	5,357,323	+15	0
Adult issues	7,529,601	7,903,195	8,237,447	8,245,405	7,855,618	+4.3	-4.7
Total book issues	12,186,218	12,930,494	13,301,089	13,602,045	13,212,941	+8.4	-2.9
Multimedia	693,883	838,015	996,056	1,163,130	1,290,080	+85.9	+10.9
Total issues	12,880,101	13,768,509	14,297,145	14,765,175	14,503,021	+12.6	-1.8

Summary table 5.1: Registered Membership (Nos.)

	2001	2002	2003	2004	2005	% change over 2001	% change over 2004
Children (0-14)	285,970	299,115	287,676	292,610	290,340	+1.5	-0.8
Adults (15+)	497,371	502,311	546,292	499,810	488,081	-1.9	-2.3
Total	783,341	801,426	833,968	792,420	778,421	-0.6	-1.8
As % of population							
Children (0-14)	33.3	36.1	34.8	35.4	35.1		
Adult (15+)	18	16.3	17.7	16.2	15.8		
Total population	21.6	20.5	21.3	20.2	19.9		

Summary table 6: Service points (Nos.)

	2001	2002	2003	2004	2005
Branch libraries	338	345	343	349	351
Total number of hours open per week	8,497	8,879	8,984	9,605	9,723
Other service points *	571	592	622	652	654
Centres	53	83	82	98	63
Mobile units	29	29	29	31	29.5
Number of stops	1,364	1,324	1,285	1,284	1,275
Agency services	8	17	23	13	12
Total number of service points	999	1,066	1,099	1,143	1,109.5

* Other service points include non-agency services to hospitals, day centres, etc.

Summary table 7: Services to schools (Nos.)

	2001	2002	2003	2004	2005
No. of schools served	3,179	3,191	3,285	3,266	3,177
Pupil population served	457,228	454,583	462,903	447,543	417,722

Note: Includes primary and second level schools

Summary table 7.1: National primary school pupil population

Academic year	No. of pupils *	% change on previous year	Primary pupils as % of 0-14 population	Grant per pupil €	Total allocation €
2005/2006	458,114	+2.2	55.4	4.52	2,070,675
2004/2005	448,243	+0.62	54.2	4.52	2,026,058
2003/2004	445,444	+1.0	53.8	3.40	1,514,510
2002/2003	441,065	0	51.3	3.40	1,499,620
2001/2002	441,099	+0.4	51.3	3.40	1,499,737

* Figures supplied by the Department of Education & Science

Notes on the following tables:

All financial data is expressed in Euros.

Key:

0 Denotes nil or not applicable

* * Denotes data not available

// Denotes too small to be significant

The data given is as supplied by individual authorities to An Chomhairle Leabharlanna. All additional data supplied by An Chomhairle from other sources is shown in green.

Public Library Statistics, 2005. Table 1: INCOME.										
	(i)	(ii)	(iii)	(iv)	(v)	(vi)	(vii)	(viii)	(ix)	(x)
AUTHORITY	Local authority contribution	Grants <i>An Chomhairle Leabharlanna</i>	Grants <i>Department of Education & Science</i>	Grants <i>Other</i>	TOTAL GRANTS	Membership charges	Overdue & reservation fees	Other income	TOTAL INCOME	Income per head resident population
County Councils:										
Carlow	1,084,494	0	25,637	37,033	62,670	17,005	9,911	5,248	1,179,328	25.63
Cavan	1,408,374	0	34,307	42,007	76,314	0	6,501	15,017	1,506,206	26.64
Clare	2,358,107	0	54,272	0	54,272	103,375	<	16,618	2,532,372	24.52
Cork	7,076,257	0	165,656	5,047	170,703	152,148	23,225	6,576	7,428,909	22.87
Donegal	2,539,361	15,026	120,107	288,063	423,196	0	18,955	139,586	3,121,098	22.69
Dún Laoghaire -	4,124,993	0	68,175	34,000	102,175	0	136,245	0	4,363,413	22.75
Fingal	6,565,284	57,500	125,433	0	182,933	0	229,216	5,108	6,982,541	35.55
Galway	3,346,097	132,000	80,000	0	212,000	47,232	26,559	5,694	3,637,582	17.40
Kerry	2,816,500	0	66,800	55,077	121,877	46,599	<	6,900	2,991,876	22.58
Kildare	3,590,112	0	96,994	0	96,994	103,512	<	0	3,790,618	23.12
Kilkenny	1,797,573	29,323	42,438	0	71,761	79,084	<	15,261	1,963,679	24.44
Laois	1,065,614	0	32,259	74,074	106,333	62,555	<	15,613	1,250,115	21.27
Leitrim	1,104,037	0	13,678	0	13,678	31,986	<	0	1,149,701	44.56
Limerick	2,407,616	59,648	13,611	63,330	136,589	0	0	0	2,544,205	20.98
Longford	699,400	0	17,248	0	17,248	6,873	11,492	18,420	753,433	24.25
Louth	1,855,200	59,103	23,857	0	82,960	29,802	42,507	46	2,010,515	19.75
Mayo	2,904,095	0	78,000	0	78,000	51,600	37,432	22,000	3,093,127	26.34
Meath	1,956,781	0	90,075	87,000	177,075	0	48,909	<	2,182,765	16.29
Monaghan	1,268,251	0	28,435	0	28,435	6,752	3,046	4,559	1,311,043	24.93
Offaly	1,245,434	0	38,989	0	38,989	21,655	6,224	62,648	1,374,950	21.60
Roscommon	1,147,578	0	28,056	32,740	60,796	13,249	3,575	2,342	1,227,540	22.83
Sligo	1,160,439	33,350	29,755	0	63,105	0	11,286	74,606	1,309,436	22.50
South Dublin	6,092,500	142,951	125,024	0	267,975	0	139,063	31,635	6,531,173	27.35
Tipperary JLC	2,237,965	8,888	76,429	0	85,317	36,842	11,833	211,095	2,583,052	18.43
Waterford	1,323,551	0	30,004	66,939	96,943	17,287	10,850	10,071	1,458,702	25.61
Westmeath	1,652,561	0	46,827	74,879	121,706	30,181	21,632	65,471	1,891,551	26.32
Wexford	2,060,861	0	86,646	0	86,646	0	45,815	41,435	2,234,757	19.17
Wicklow	2,222,557	0	72,357	300	72,657	0	42,874	5,378	2,343,466	20.44
Total: 28	69,111,592	537,789	1,711,069	860,489	3,109,347	857,737	887,150	781,327	74,747,153	23.36
City Councils:										
Cork	3,219,361	70,000	98,800	161,493	330,293	109,561	23,779	121,130	3,804,124	30.91
Dublin	18,132,565	252,913	197,431	214,874	665,218	0	265,182	357,185	19,420,150	39.17
Limerick	1,161,509	93,290	29,873	10,000	133,163	26,362	3,064	8,034	1,332,132	24.66
Waterford	1,136,650	32,000	24,837	15,378	72,215	83,263	7,353	9,313	1,308,794	29.35
Total: 4	23,650,085	448,203	350,941	401,745	1,200,889	219,186	299,378	495,662	25,865,200	36.05
TOTAL: 32	92,761,677	985,992	2,062,010	1,262,234	4,310,236	1,076,923	1,186,528	1,276,989	100,612,353	25.68

Public Library Statistics, 2005. Table 1.1: CAPITAL INCOME.						
Authority	(i) Acquisitions	(ii) Automation	(iii) Buildings	(iv) Vehicles	(v) Other	(vi) TOTAL
Carlow	9,780	93,752	266,824	0	0	370,356
Cavan	49,184	0	2,486,207	0	0	2,535,391
Clare	0	0	0	0	0	0
Cork	0	0	0	0	0	0
Donegal	0	0	55,789	15,195	0	70,984
Dún Laoghaire- Rathdown	0	0	400,007	0	0	400,007
Fingal	0	112,277	386,245	0	177,209	675,731
Galway	56,525	24,535	7,202	0	0	88,262
Kerry	380,000	55,077	0	0	0	435,077
Kildare	0	0	309,718	0	0	309,718
Kilkenny	0	31,444	0	0	27,000	58,444
Laois	0	0	0	0	0	0
Leitrim	0	0	1,474,405	0	0	1,474,405
Limerick	0	0	0	0	0	0
Longford	0	0	0	0	0	0
Louth	0	0	0	0	0	0
Mayo	0	40,828	0	0	0	40,828
Meath	0	57,000	0	0	0	57,000
Monaghan	0	48,662	0	182,468	0	231,130
Offaly	0	95,602	0	0	26,684	122,286
Roscommon	0	0	0	0	103,680	103,680
Sligo	0	0	0	0	0	0
South Dublin	0	98,236	0	0	83,860	182,096
Tipperary JLC	125,000	187,277	1,164,805	0	0	1,477,082
Waterford	115,341	16,199	324,510	0	0	456,050
Westmeath	0	0	0	0	0	0
Wexford	0	0	0	0	0	0
Wicklow	0	201,982	874,234	0	0	1,076,216
Total: 28	735,830	1,062,871	7,749,946	197,663	418,433	10,164,743
Cork	0	0	2,036,901	0	0	2,036,901
Dublin	0	0	0	0	0	0
Limerick	0	0	0	0	41,382	41,382
Waterford	0	0	0	0	0	0
Total: 4	0	0	2,036,901	0	41,382	2,078,283
TOTAL:32	735,830	1,062,871	9,786,847	197,663	459,815	12,243,026

Public Library Statistics, 2005: Table 1.2: DEPARTMENT OF THE ENVIRONMENT, HERITAGE & LOCAL GOVERNMENT CAPITAL GRANT ALLOCATIONS *			
Authority	(i) Buildings	(ii) Vehicles	(iii) TOTAL
<i>County Councils:</i>			
Carlow	276,605	0	276,605
Cavan	2,400,241	0	2,400,241
Clare	0	0	0
Cork	0	0	0
Donegal	0	0	0
Dún Laoghaire - Rathdown	0	0	0
Fingal	386,245	0	386,245
Galway	63,727	0	63,727
Kerry	0	94,699	94,699
Kildare	309,718	0	309,718
Kilkenny	0	0	0
Laois	0	0	0
Leitrim	385,588	0	385,588
Limerick	0	0	0
Longford	0	0	0
Louth	0	0	0
Mayo	0	0	0
Meath	0	0	0
Monaghan	0	190,325	190,325
Offaly	0	0	0
Roscommon	0	0	0
Sligo	0	0	0
South Dublin	0	0	0
Tipperary JLC	1,289,805	0	1,289,805
Waterford	324,510	0	324,510
Westmeath	403,193	0	403,193
Wexford	0	0	0
Wicklow	874,234	0	874,234
Total: 28	6,713,866	285,024	6,998,890
<i>City Councils:</i>			
Cork	1,955,401	0	1,955,401
Dublin	0	0	0
Limerick	0	0	0
Waterford	0	0	0
Total: 4	0	0	1,955,401
TOTAL: 32	8,669,267	285,024	8,954,291
<i>Building and vehicle grants only. See also Summary table 1.2 (page 11)</i>			

Public Library Statistics, 2005. Table 2: EXPENDITURE - Salaries and stock.											
	(i)	(ii)	(iii)	(iv)	(v)	(vi)	(vii)	(viii)	(ix)	(x)	(xi)
Authority	Salaries	Books <i>General stock Adults</i>	Books <i>General stock Children's</i>	Books <i>Primary School Scheme</i>	Multimedia	Serials	Other	TOTAL ACQUISITION S	€ spent on Acquisitions per head inc. schools	€ spent on Acquisitions per head (ex schools)	Binding
County Councils:											
Carlow	599,902	105,532	<i>in column (ii)</i>	26,106	13,372	14,930	0	159,940	3.48	2.91	3,308
Cavan	857,683	81,408	43,108	30,677	2,721	9,697	0	167,611	2.96	2.42	8,706
Clare	1,734,959	265,022	<i>in column (ii)</i>	<i>in column (ii)</i>	<i>in column (ii)</i>	<i>in column (ii)</i>	<i>in column (ii)</i>	265,022	2.57	**	3,889
Cork	1,850,418	604,777	322,693	176,091	152,167	89,408	0	1,345,136	4.14	3.60	4,155
Donegal	1,629,010	165,833	54,652	88,424	30,619	24,648	3,050	367,226	2.67	2.03	1,256
Dún Laoghaire –	2,906,869	222,608	92,677	67,261	77,073	53,308	0	512,927	2.67	2.32	19,153
Fingal	4,672,849	553,095	138,366	180,453	179,729	135,000	0	1,186,643	6.04	5.12	0
Galway	2,182,294	375,341		110,688	17,774	25,402	6,522	535,727	2.56	2.03	10,654
Kerry	1,792,328	310,147	<i>in column (ii)</i>	66,800	<i>in column (ii)</i>	<i>in column (ii)</i>	<i>in column (ii)</i>	376,947	2.84	2.34	3,053
Kildare	2,110,864	243,926	121,963	96,994	66,510	17,600	0	546,993	3.34	2.74	0
Kilkenny	1,158,463	129,001	37,035	22,943	20,651	19,420	2,743	231,793	2.89	2.60	507
Laois	634,353	179,175		24,971	0	0	25,015	229,161	3.90	3.47	0
Leitrim	684,199	90,636	<i>in column (ii)</i>	14,365	<i>in column (ii)</i>	<i>in column (ii)</i>	<i>in column (ii)</i>	105,001	4.07	3.51	0
Limerick	1,579,774	247,599	90,173	65,006	21,114	11,860	0	435,752	3.59	3.06	0
Longford	630,000	53,550	18,174	17,000	3,200	2,000	0	93,924	3.02	2.48	2,500
Louth	1,145,239	114,895	49,029	58,558	57,986	8,527	<i>in col.(ii)</i>	288,995	2.84	2.26	1,232
Mayo	1,880,646	235,456	207,872	78,000	31,000	9,679	0	562,007	4.79	4.12	7,000
Meath	1,379,971	231,895	<i>in column (ii)</i>	84,876	<i>in column (ii)</i>	<i>in column (ii)</i>	<i>in column (ii)</i>	316,771	2.36	1.73	0
Monaghan	656,417	114,810	45,835	27,980	<i>in column (ii)</i>	4,546	1,516	194,687	3.70	3.17	0
Offaly	877,912	123,649	<i>in column (ii)</i>	38,989	26,403	5,922	0	194,963	3.06	2.45	3,463
Roscommon	629,900	148,000	65,000	22,000	<i>in column (ii)</i>	16,000	15,000	266,000	4.95	4.54	7,000
Sligo	722,463	89,993	42,846	12,289	8,196	12,599	5,000	170,923	2.94	2.73	4,000
South Dublin	3,472,183	834,262	<i>in column (ii)</i>	144,369	<i>in column (ii)</i>	50,000	<i>in col.(ii)</i>	1,028,631	4.31	3.70	0
Tipperary JLC	1,563,560	249,500	<i>in column (ii)</i>	56,900	<i>in column (ii)</i>	<i>in column (ii)</i>	<i>in column (ii)</i>	306,400	2.19	1.78	0
Waterford	938,602	59,964	22,208	30,004	23,103	8,388	**	143,667	2.52	2.00	0
Westmeath	1,098,004	149,392	<i>in column (ii)</i>	46,012	**	**	65,175	260,579	3.63	2.99	0
Wexford	1,008,198	235,724	56,148	80,722	37,433	2,147	0	412,174	3.54	2.84	0
Wicklow	1,439,153	131,949	72,165	75,531	47,138	18,009	3,000	347,792	3.03	2.37	0
Total: 28	41,836,36	6,347,139	1,479,944	1,744,009	816,189	539,090	127,021	11,053,392	3.45	2.91	79,876
City Councils:											
Cork	2,492,948	248,934	75,508	98,722	30,000	36,894	0	490,058	3.98	3.18	16,166
Dublin	12,383,32	1,002,301	244,384	203,057	237,112	266,935	0	1,953,789	3.94	3.53	40,900
Limerick	672,994	81,493	33,714	48,936	5,915	3,116	3,154	176,328	3.26	2.36	3,435
Waterford	830,881	36,918	24068	35,099	16,104	6,909	**	119,098	2.67	1.88	0
Total: 4	16,380,15	1,369,646	377,674	385,814	289,131	313,854	3,154	2,739,273	3.82	3.28	60,501
TOTAL: 32	58,216,363	7,716,785	1,857,618	2,129,823	1,105,320	852,944	130,175	13,792,665	3.52	2.98	140,377

Public Library Statistics, 2005. Table 2.1: EXPENDITURE - Premises, Transport, etc.												
	(xi)	(xii)	(xiii)	(xiv)	(xv)	(xvi)	(xvii)	(xviii)	(xix)	(xx)	(xxi)	(xxii)
	~~~~~ PREMISES ~~~~~			TRANSPORT & SUBSISTENCE			Library computing costs	Leasing & loan repayments	Contribution to An Chomhairle Leabharlanna	Other expenditure	TOTAL EXPENDITURE	Expenditure per head of resident population
Authority	HQ	Branches	TOTAL	Transport	Travel & Subsistence	TOTAL						
<i>County Councils:</i>												
Carlow	52,867	17,945	70,812	4,433	6,897	11,330	83,759	0	13,369	142,073	1,084,493	23.57
Cavan	315,262	<i>in col xi</i>	315,262	3,228	10,803	14,031	15,897	9,144	16,429	101,443	1,506,206	26.64
Clare	29,095	150,045	179,140	4,098	46,066	50,164	85,024	0	30,007	184,167	2,532,372	24.52
Cork	60,782	2,250,431	2,311,213	670,248	140,279	810,527	63,500	0	94,360	949,600	7,428,909	22.87
Donegal	67,532	352,791	420,323	8,264	45,856	54,120	226,435	0	39,972	382,756	3,121,098	22.69
Dún Laoghaire - Rathdown	179,164	340,653	519,817	23,927	14420	38,347	60,381	0	55,724	250,196	4,363,414	22.75
Fingal	0	399,947	399,947	0	38,620	38,620	73,977	0	57,069	136,179	6,565,284	33.43
Galway	100,373	537,640	638,013	31,312	42,420	73,732	13,087	132,000	41,619	10,456	3,637,582	17.40
Kerry	175,556	113,576	289,132	39,210	19,766	58,976	32,828	15,601	38,505	123,990	2,731,360	20.61
Kildare	121,040	188,410	309,450	22,933	49,962	72,895	103,631	333,269	47,633	265,883	3,790,618	23.12
Kilkenny	49,457	172,065	221,522	36,365	13,644	50,009	56,479	9,123	23,500	153,463	1,904,859	23.71
Laois	19,296	141,377	160,673	3,081	12229	15,310	66,055	53,500	17,077	73,985	1,250,114	21.27
Leitrim	53,353	52,755	106,108	0	30,814	30,814	54,489	65,000	7,496	96,594	1,149,701	44.56
Limerick	18,855	77,382	96,237	18,480	21,767	40,247	136,445	0	35,238	216,500	2,540,193	20.94
Longford	103,015	92,942	195,957	10,010	11,000	21,010	23,000	0	10,000	0	976,391	31.43
Louth	30,224	56,725	86,949	20,305	30,914	51,219	39,618	0	29,584	232,031	1,874,867	18.41
Mayo	385,351	<i>in col xi</i>	385,351	68,000	46,000	114,000	110,000	0	34,123	0	3,093,127	26.34
Meath	307,889	<i>in col xi</i>	307,889	19,105	<i>in col xiv</i>	19,105	50,442	0	38,935	69,652	2,182,765	16.29
Monaghan	122,733	112,858	235,591	15,919	27,046	42,965	20,576	0	15,281	47,019	1,212,536	23.06
Offaly	99,372	20,663	120,035	2,795	12,002	14,797	17,216	0	18,497	128,066	1,374,949	21.60
Roscommon	73,800	27,000	100,800	20,000	30,000	50,000	45,100	0	18,000	110,740	1,227,540	22.83
Sligo	66,701	0	66,701	5,149	20,062	25,211	43,199	0	18,500	15,000	1,065,997	18.32
South Dublin	778,493	<i>in col xi</i>	778,493	34,446	28,491	62,937	97,018	254,000	69,392	217,736	5,980,390	25.04
Tipperary JLC	17,776	15,588	33,364	0	36,775	36,775	0	264,160	0	348,279	2,552,538	18.22
Waterford	6,153	41,243	47,396	4,664	21,132	25,796	24,966	16,185	16,547	140,393	1,353,552	23.77
Westmeath	44,350	268,410	312,760	10,434	11,244	21,678	77,678	0	20,878	99,974	1,891,551	26.32
Wexford	121,001	104,553	225,554	16,460	38,551	55,011	232,480	0	33,876	34,231	2,001,524	17.17
Wicklow	31,429	0	31,429	0	28,418	28,418	44,509	108,000	33,319	310,846	2,343,466	20.44
Total: 28	3,430,919	5,534,999	8,965,918	1,092,86	835,178	1,928,044	1,897,789	1,259,982	874,930	4,841,252	72,737,396	22.73
<i>City Councils</i>												
Cork	321,642	0	321,642	13,500	3,624	17,124	111,506	0	35,755	318,925	3,804,124	30.91
Dublin	371,491	2,892,191	3,263,682	56,298	36,600	92,898	391,955	474,786	144,047	674,766	19,420,150	39.17
Limerick	302,533	31,622	334,155	2,308	3,149	5,457	28,759	0	15,696	95,309	1,332,133	24.66
Waterford	305,237	0	305,237	2,610	8,340	10,950	29,670	0	12,957	0	1,308,793	29.35
Total: 4	1,300,903	2,923,813	4,224,716	74,716	51,713	126,429	561,890	474,786	208,455	1,089,000	25,865,200	36.05
TOTAL: 32	4,731,822	8,458,812	13,190,634	1,167,582	886,891	2,054,473	2,459,679	1,734,768	1,083,385	5,930,252	98,602,596	25.17

Table 2.2: Public Library Statistics, 2005: CAPITAL EXPENDITURE						€
	(i)	(ii)	(iii)	(iv)	(v)	(vi)
AUTHORITY					Other	Total Expenditure
	<i>Acquisitions</i>	<i>Automation</i>	<i>Buildings</i>	<i>Vehicles</i>		
<i>County Councils:</i>						
Carlow	19,561	113,003	0	0	0	132,564
Cavan	98,368	0	3,128,616	0	0	3,226,984
Clare	0	0	0	0	0	0
Cork	0	0	0	0	0	0
Donegal	0	0	0	15,195	0	15,195
Dún Laoghaire - Rathdown	12,514	0	17,792	0	0	30,306
Fingal	102,528	39,014	897,313	0	25,586	1,064,441
Galway	993	0	80,292	0	0	81,285
Kerry	380,000	55,077	0	0	0	435,077
Kildare	0	0	291,797	0	0	291,797
Kilkenny	0	31,444	0	0	27,000	58,444
Laois	0	0	0	0	0	0
Leitrim	130,278	26,903	411,694	0	0	568,875
Limerick	0	0	0	0	0	0
Longford	0	0	0	0	0	0
Louth	0	0	0	0	0	0
Mayo	454,100	40,828	559,945	0	0	1,054,873
Meath	0	57,000	0	0	0	57,000
Monaghan	0	769	102,623	182,468	0	285,860
Offaly	0	95,602	0	0	26,684	122,286
Roscommon	0	53,902	0	0	96,740	150,642
Sligo	0	0	0	0	0	0
South Dublin	0	0	0	0	83,860	83,860
Tipperary JLC	250,000	243,122	2,043,731	0	0	2,536,853
Waterford	115,341	16,199	324,510	0	0	456,050
Westmeath	0	0	0	0	0	0
Wexford	0	0	0	0	0	0
Wicklow	0	32,379	1,165,645	0	0	1,198,024
<i>Total: 28</i>	<i>1,563,683</i>	<i>805,242</i>	<i>9,023,958</i>	<i>197,663</i>	<i>232,870</i>	<i>11,850,416</i>
<i>City Councils</i>						
Cork	0	24,207	2,659,923	0	0	2,684,130
Dublin	0	0	0	0	0	0
Limerick	139,153	0	138,119	0	0	277,272
Waterford	214,980	477	95,016	0	0	310,473
<i>Total: 4</i>	<i>354,133</i>	<i>24,684</i>	<i>2,893,058</i>	<i>0</i>	<i>0</i>	<i>3,271,875</i>
<b>TOTAL:32</b>	<b>1,917,816</b>	<b>829,926</b>	<b>11,917,016</b>	<b>197,663</b>	<b>259,870</b>	<b>15,122,291</b>

Table 3: Public Library Statistics, 2005: STAFF COMPLEMENT															
	(i)	(ii)	(iii)	(iv)	(v)	(vi)	(viii)	(ix)	(x)	(xi)	(xii)	(xiii)	(xiv)	(xv)	
	Co/City Librarian	Executive Librarians	Assistant Librarians	Staff Officers	Senior Library Assistants	Library Assistants	Branch Librarian	Clerical Officers	Driver Assistants	Van Drivers	Support Staff	TOTALS			TOTAL Staff Complement
												Professional	Para Professional	Support Staff	
County Councils:															
Carlow	1	1	3	0	2.6	3.6	1.6	1	1	0	0	5	9.8	0	14.8
Cavan	1	1	2	1	4	4	7.20	1	1	0		4	18.2	0	22.2
Clare	1	4	5	0	13.5	5	7.75	0	0	1	6.7	10	26.25	7.7	43.95
Cork	1	5	13.5	0	13.5	30	23	4	8	0	2	19.5	78.5	2	100
Donegal	1	0	5	0	11	20	3	0	2	0	0	6	36	0	42
Dún Laoghaire - Rathdown	See table 3.1											23	50	10	83
Fingal	See table 3.2											33	81.5	27	141.5
Galway	1	2	6	0	12	8	13	2	3	0	2	9	38	2	49
Kerry	1	1	6	0	7	10.5	8	3	4	0	3	8	32.5	3	43.5
Kildare	1	1	11	0	8	17	8.25	4	2	0	7.78	13	39.25	7.78	60.03
Kilkenny	1	0	3	0	4	8	6	1	2	0	5	4	21	5	30
Laois	1	1	2	0	2	1	5.2	1	0	0	0.65	4	9.2	0.65	13.85
Leitrim	1	1	1	0	3	3	6	1	0	0	0	3	13	0	16
Limerick	1	4	7	0	5	6	13	2	2	0	7	12	28	7	47
Longford	1	2	1	1	3	4	5	2	0	0.5	0.5	4	15	1	20
Louth	1	1	5	0	8	11	3	1	2	0	2	7	25	2	34
Mayo	1	3	4	0	6	11	13	2	1	1		8	33	1	42
Meath	1	3	7	0	5	16	5	3	1	0	1	11	30	1	42
Monaghan	1	1	3	0	5	9	2	0	2	0	1.5	5	18	1.5	24.5
Offaly	1	1	1	1	2	3	4	2	1	0	2	3	13	2	18
Roscommon	1	0	3	0	3	5	4	1	2	0	1.5	4	15	1.5	20.5
Sligo	1	1	2	0	3	6	2	1	1	0	0	4	13	0	17
South Dublin	See table 3.3											25	56	20	101
Tipperary JLC	1	1	6	2	9	5	12	3	2	0	7	8	33	7	48
Waterford	1	0	4	0	5.6	7	2.7	1	0	2.5	0	5	16.3	2.5	23.8
Westmeath	1	2	3	0	6	10	7	1	1	0	1	6	25	1	32
Wexford	1	2	4	0	3	6	0.66	4	2	1	1.25	7	15.66	2.25	24.91
Wicklow	1	2	4	0	7	6	10.5	1	2	0	3	7	26.5	3	36.5
Total 28												257.5	815.66	117.88	1191.04
City Councils															
Cork	1	3	9	0	11	31	0	3	0	0	9	13	45	9	67
Dublin *	See table 3.4											96	170	82	348
Limerick	1	2	2	0	5	4	0	1	1	0	3	5	11	3	19
Waterford	1	1	3	0	3	14	0	1	0	0	1	5	18	1	24
Total: 4												119	244	95	458
TOTAL: 32												376	1,060	213	1,649

Table 3.1: STAFFING, 2005 - DÚN LAOGHAIRE-RATHDOWN			
	(i)	(ii)	(iii)
	<i>HQ</i>	<i>Branches</i>	<b>TOTAL</b>
<i>Grade</i>		<i>/ Mobiles</i>	
County Librarian	1		<b>1</b>
Senior Librarians	4	3	<b>7</b>
Librarians	5	10	<b>15</b>
Senior Library Assistants	3	12	<b>15</b>
Library Assistants	7	24	<b>31</b>
Branch Librarians	0	1	<b>1</b>
Clerical Officers	3	0	<b>3</b>
Driver / Assistants	0	0	<b>0</b>
Van Drivers	2	0	<b>2</b>
Other Grades	2	6	<b>8</b>
<b>TOTALS</b>	<b>27</b>	<b>56</b>	<b>83</b>
Table 3.3: STAFFING, 2005 - SOUTH DUBLIN			
	(i)	(ii)	(iii)
	<i>HQ</i>	<i>Branches</i>	<b>TOTAL</b>
<i>Grade</i>		<i>/ Mobiles</i>	
County Librarian	1		<b>1</b>
Senior Librarians	3	5	<b>8</b>
Librarians	5	11	<b>16</b>
Senior Library Assistants	3	15	<b>18</b>
Library Assistants	0	36	<b>36</b>
Branch Librarians	0	1	<b>1</b>
Clerical Officers	1	0	<b>1</b>
Driver Assistants	0	0	<b>0</b>
Van Drivers	1	4	<b>5</b>
Other Grades	1	14	<b>15</b>
<b>TOTALS</b>	<b>15</b>	<b>86</b>	<b>101</b>

Table 3.2: STAFFING, 2005 - FINGAL			
	(i)	(ii)	(iii)
	<i>HQ</i>	<i>Branches</i>	<b>TOTAL</b>
<i>Grade</i>		<i>/ Mobiles</i>	
County Librarian	1		<b>1</b>
Senior Librarians	2	8.1	<b>10.1</b>
Librarians	4	16	<b>20</b>
Senior Library Assistants	3	22	<b>25</b>
Library Assistants	10	44	<b>54</b>
Branch Assistants	0	1	<b>1</b>
Branch Librarians	0	1	<b>1</b>
Clerical Officers	1	0.5	<b>1.5</b>
Driver Assistants	0	0	<b>0</b>
Van Drivers	1	4	<b>5</b>
Other Grades	0	25	<b>25</b>
<b>TOTALS</b>	<b>22</b>	<b>121.6</b>	<b>143.6</b>
<p>Figures reflect number of posts filled and not the full staff complement which is as given on Table 3: Professional 33; Para-professional 81.5; Support staff 27; Total 141.5 (see Table 3)</p>			
Table 3.4: STAFFING, 2005 - DUBLIN CITY. *			
	(i)	(ii)	(iii)
	<i>HQ</i>	<i>Branches</i>	<b>TOTAL</b>
<i>Grade</i>		<i>/ Mobiles</i>	
Chief Librarian	1		<b>1</b>
Deputy Librarian	1		<b>1</b>
Divisional Librarians	4.5	1.5	<b>6</b>
Senior Librarians	10	20	<b>30</b>
Librarians	10	35	<b>45</b>
Senior Library Assistants	5	40	<b>45</b>
Library Assistants	1	84	<b>85</b>
Branch Assistants	0	10	<b>10</b>
Clerical Officers	8	3	<b>11</b>
Drivers Assistants	0	3	<b>3</b>
Van Drivers	3	0	<b>3</b>
Other Grades	9	68	<b>77</b>
<b>TOTALS</b>	<b>52.5</b>	<b>265</b>	<b>317</b>
<p>Figures reflect number of posts filled and not the full staff complement which is as given on Table 3: Professional 96; Para-professional 170; Support staff 82; Total 348 (see Table 3)</p>			



Public Library Statistics, 2005. Table 4: COLLECTIONS - BOOKS & SERIALS.													(Nos.)
Authority	(i)	(ii)	(iii)	(iv)	(v)	(vi)	(vii)	(viii)	(ix)	(x)	(xi)	(xii)	(xiii)
	BOOKS IN STOCK				TOTAL BOOKS IN STOCK	Stock items per head population	SERIAL SUBSCRIP -TIONS	BOOKS ADDED TO STOCK, 2005				TOTAL Added to stock	WITHDRAWN 2005 TOTAL
	<i>Adult non-fiction</i>	<i>Adult fiction</i>	<i>Children's</i>	<i>Schools</i>				<i>Adult non-fiction</i>	<i>Adult fiction</i>	<i>Children's</i>	<i>Schools</i>		
<i>County Councils:</i>													
Carlow	41,516	26,394	33,817	6,450	108,177	2.4	122	2,545	1,971	7,896	0	12,412	1,000
Cavan	52,873	38,615	81,811	30,968	204,267	3.6	59	7,752	3,864	9,749	4,299	25,664	5,004
Clare	107,157	89,575	105,128	<	301,860	2.9	60	5,857	5,029	9,830	0	20,716	11,763
Cork	333,514	331,812	426,804	22,574	1,114,704	3.4	**	10,781	28,070	34,786		73,637	349,806
Donegal	133,917	154,732	86,623	96,157	471,429	3.4	143	4,363	2,966	5,674	620	13,623	513
Dún Laoghaire – Rathdown	149,705	67,793	94,616	109,794	421,908	2.2	90	9,933	6,313	13,414	8,706	38,366	33,784
Fingal	176,402	85,848	132,285	43,453	437,988	2.2	282	28,462	14,606	28,405	28,473	99,946	30,511
Galway	140,950	155,590	193,085	126,735	616,360	2.9	**	11,074	12,766	17,245	20,147	61,232	48,774
Kerry	93,852	50,076	71,419	38,067	253,414	1.9	**	**	**	**	7,635	7,635	0
Kildare *	66,741	61,536	93,299	18,840	240,416	1.5	59	**	**	**	**	**	0
Kilkenny	79,395	64,960	96,236	75,000	315,591	3.9	250	15,837	<	<	<	15,837	11,403
Laois	54,930	36,385	70,380	58,947	220,642	3.8	47	2,876	3,785	6,157	4,828	17,646	8,991
Leitrim	32,773	27,263	45,162	0	105,198	4.1	**	5,855	3,329	4,712	0	13,896	3,012
Limerick	114,157	116,548	282,352	0	513,057	4.2	**	5,896	6,912	20,829	0	33,637	170,000
Longford	34,808	35,168	59,144	47,600	176,720	5.7	**	1,600	1,970	4,200	2,600	10,370	19,000
Louth	79,478	58,690	60,252	56,494	254,914	2.5	23	3,729	3,629	16,711	0	24,069	12,268
Mayo	110,495	114,720	169,471	154,738	549,424	4.7	**	7,841	7,431	7,658	5,698	28,628	5,344
Meath	122,603	74,081	138,388	100,134	435,206	3.2	**	**	**	**	10,750	10,750	1,550
Monaghan	62,425	39,950	68,502	21,145	192,022	3.7	**	3,720	5,402	7,762	1,794	18,678	19,892
Offaly	47,614	48,706	75,087	58,465	229,872	3.6	**	3,035	3,908	5,906	7,387	20,236	18,084
Roscommon	93,151	56,656	111,316	0	261,123	4.9	55	5,103	4,942	6,872	0	16,917	5,453
Sligo	26,022	65,660	30,009	19,071	140,762	2.4	80	2,665	10,839	5,758	0	19,262	4,313
South Dublin	201,674	108,547	208,262	145,155	663,638	2.8	135	15,772	11,623	17,687	25,872	70,954	20,646
Tipperary JLC	172,828	209,900	218,207	88,179	689,114	4.9	**	5,112	8,534	10,976	7,581	32,203	804
Waterford	30,509	20,010	36,478	42,365	129,362	2.3	15	2,338	2,055	3,890	10,070	18,353	13,977
Westmeath	85,001	38,926	66,236	50,583	240,746	3.4	**	4,964	3,291	6,887	5,743	20,885	3,843
Wexford	113,527	94,722	48,890	239,232	496,371	4.3	24	5,844	5,526	6,051	15,000	32,421	0
Wicklow	77,034	53,465	56,717	38,441	225,657	2.0	76	4,732	4,736	8,478	0	17,946	37,158
Total: 28	2,835,051	2,326,328	3,159,976	1,688,587	10,009,942	3.1	1,520	177,686	163,497	267,533	167,203	775,919	836,893
<i>City Councils</i>													
Cork	132,291	74,906	89,111	143,884	440,192	3.6	225	8,313	11,967	15,208	20,468	55,956	36,153
Dublin	842,721	238,423	250,222	278,290	1,609,656	3.2	614	27,219	18,906	41,776	46,091	133,992	0
Limerick	68,787	35,754	71,953	98,135	274,629	5.1	32	4,286	3,478	13,888	8,642	30,294	3,310
Waterford	62,477	31,003	46,188	0	139,668	3.1	**	5,381	3,778	7,314	0	16,473	6,422
Total: 4	1,106,276	380,086	457,474	520,309	2,464,145	3.4	871	45,199	38,129	78,186	75,201	236,715	45,885
TOTAL: 32	3,941,327	2,706,414	3,617,450	2,208,896	12,474,087	3.2	2,391	222,885	201,626	345,719	242,404	1,012,634	882,778

Public Library Statistics, 2005. Table 4: COLLECTIONS - Multimedia												
AUTHORITY	(i)	(ii)	(iii)	(iv)	(v)	(vi)	(vii)	(viii)	(ix)	(x)	(xi)	(xii)
	Sound recordings		Spoken word	Talking books	Micro-form sets	DVDs/ Videos/Films	Computer software	Photographic	Maps	Art	Other	TOTAL
	<i>Discs</i>	<i>Tapes</i>										
<i>County Councils:</i>												
Carlow	1,642	0	0	2,449	1,898	247	0	**	153	12	**	6,401
Cavan	0	**	0	3,590	401	464	373	**	**	0	0	4,828
Clare	3,645	0	0	1,083	919	0	0	8,511	353	0	0	14,511
Cork	0	0	0	15,232	0	773	0	0	0	0	342	16,347
Donegal	6,371	24	0	3,954	2,810	6,792	199	2	180	0	44	20,376
Dún Laoghaire – Rathdown	7,812	9,903	**	**	**	**	**	**	**	**	2,194	19,909
Fingal	15,902	4,208	0	7,152	0	6,258	1,041	0	341	1,166	1,746	37,814
Galway	0	0	0	8,712	0	0	3,000	0	0	0	0	11,712
Kerry	563	0	0	3,833		726	0	0	500	0	0	5,622
Kildare	**	**	**	**	**	**	**	**	**	**	1,606	1,606
Kilkenny	>	>	>	>	>	>	>	>	>	>	>	1,434
Laois	1,756	1,026	0	3,899	862	424	82	420	121	0	147	8,737
Leitrim	1,280	400	0	672	0	1,085	519	0	0	0	0	3,956
Limerick	0	0	0	0	0	0	0	0	0	0	0	0
Longford	>	>	>	>	>	>	>	>	>	>	>	4,649
Louth	3,602	6,790	0	0	0	1,709	25	0	0	0	2,045	14,171
Mayo	1,644	2,412	0	0	652	2,040	266	1,070	70	0	1,550	9,704
Meath	**	**	**	**	**	**	**	**	**	**	**	0
Monaghan	2,398	1,076	0	1,776	379	44+579	24	420	130	0	0	6,203
Offaly	8	24	0	2,440	413	1,486	572	6,849	500	5	240	12,537
Roscommon	>	>	>	>	>	>	>	>	>	>	>	15,696
Sligo	0	0	0	0	0	0	0	0	0	0	0	0
South Dublin	17,589	8,581	0	8,055	0	4,474	322	771	0	407	2,306	42,505
Tipperary JLC	751	7,244	0	0	0	500	251	0	299	0	0	9,045
Waterford	2,335	275	0	1,547	0	236	77	0	303	0	12	4,785
Westmeath	2,520	182	688	3,600	815	635	280	2,569	550	0	0	11,839
Wexford	2,306	0	1,169	967	101	0	0	2,800	50	0	52	7,445
Wicklow	3,266	740	0	2,851	0	281	555	240	0	0	0	7,933
<i>Total: 28</i>	<i>75,390</i>	<i>42,885</i>	<i>1,857</i>	<i>71,812</i>	<i>9,250</i>	<i>28,130</i>	<i>7,586</i>	<i>23,652</i>	<i>3,550</i>	<i>1,590</i>	<i>12,284</i>	<i>299,765</i>
<i>City Councils</i>												
Cork	26,119	8,003	0	15,930	2,924	3,457	2,089	0	250	0	0	58,772
Dublin	24,771	21,359	0	24,732	355	4,006	124	193	281	690	5,973	82,484
Limerick	5,981	1,924	0	4,763	707	269	208	0	0	0	0	13,852
Waterford	8,227	1,621	712	3,221	0	3,933	187	0	0	0	2,853	20,754
<i>Total: 4</i>	<i>65,098</i>	<i>32,907</i>	<i>712</i>	<i>48,646</i>	<i>3,986</i>	<i>11,665</i>	<i>2,608</i>	<i>193</i>	<i>531</i>	<i>690</i>	<i>8,826</i>	<i>175,862</i>
Total: 32	140,488	75,792	2,569	120,458	13,236	39,795	10,194	23,845	4,081	2,280	21,110	475,627

Public Library Statistics, 2005. Table 4.2: COLLECTIONS - Multimedia - Additions and withdrawals														
	(xiv)	(xv)	(xvi)	(xvii)	(xviii)	(xix)	(xx)	(xxi)	(xxii)	(xxiii)	(xxiv)	(xxv)	(xxvi)	(xxvii)
	MULTIMEDIA ITEMS ADDED TO STOCK,													WITHDRAWALS
AUTHORITY	Sound recordings	Spoken	Talking	Micro-	Videos	Films	Computer	Photo-	Maps	Art	Other			
	<i>Discs</i>	<i>Tapes</i>	cassettes	books	form sets		Software	graphic					TOTAL	TOTAL
<i>County Councils:</i>														
Carlow	523	0	0	429	62	0	0	0	0	0	0	0	1,014	0
Cavan	0	0	0	780	0	0	272	80	**	**	0	0	1,132	124
Clare	373	1	0	22	39	17	85		365	2			904	75
Cork	0	0	0	2,060	0	0	494	0	0	0	0	51	2,605	103
Donegal	189	0	0	306	0	275	296	0	0	0	0	8	1,074	18
Dún Laoghaire – Rathdown	2,902	366	0	0	0	2	0	0	0	90	0	1,373	4,733	1,249
Fingal	3,229	288	0	944	0	178	1,864	235	0	0	37	266	7,041	2,350
Galway	0	0	0	766	0	0	0	0	0	0	0	0	766	10
Kerry	0	0	0	0	0	0	0	0	0	0	0	0	0	0
Kildare	0	0	0	0	0	0	0	0	0	0	0	0	0	0
Kilkenny	>	>	>	>	>	>	>	>	>	>	>	>	1,064	240
Laois	288	0	0	1,476	0	10	37	15	46	0	0	28	1,900	362
Leitrim	0	0	0	0	0	0	0	0	0	0	0	0	0	36
Limerick	0	0	0	0	0	0	0	0	0	0	0	0	0	0
Longford	50	50	0	60	0	0	0	0	0	0	0	0	160	20
Louth	730	595		0	0	90		19	0	0	0	1,156	2,590	516
Mayo	810	40	0	0	2	440	0	6	200	5	0	30	1,533	301
Meath	**	**	**	**	**	**	**	**	**	**	**	**	0	0
onaghan	10	0	0	6	0	0	227	11	0	0	0	0	254	398
Offaly	0	0	0	438	1	38	0	266	199	0	5	0	947	125
Roscommon	>	>	>	>	>	>	>	>	>	>	>	>	773	39
Sligo	0	0	0	0	0	0	0	0	0	0	0	0	0	0
South Dublin	2,191	48	0	1,735	0	2,926	0	52	0	0	102	551	7,605	1,313
Tipperary JLC	0	0	0	0	0	0	0	0	0	0	0	0	0	0
Waterford	425	43	0	134	0	19	0	5	0	3	0	0	629	0
Westmeath	189	0	160	382	4	24	118	24	0	0	0	0	901	62
Wexford	245	0	0	0	0	0	0	0	300	0	0	52	597	0
Wicklow	587	0		455	0	133	0	37	102	0	0	0	1,314	140
Total: 28	12,741	1,431	160	9,993	108	4,152	3,393	750	1,212	100	144	3,515	39,536	7,481
<i>City Councils:</i>														
Cork	2,091	25	0	8,716	50	1,023	0	1,634	0	0	0	0	13,539	1,442
Dublin	5,843	0	0	2,412	0	45	0	0	0	0	0	1,113	9,413	0
Limerick	1,827	0	0	1,970	40	177	0	70	0	0	0	0	4,084	125
Waterford	956	52	102	680	0	25	536	107	0	0	0	924	3,382	2,222
Total: 4	10,717	77	102	13,778	90	1,270	536	1,811	0	0	0	2,037	30,418	3,789
Total: 32	23,458	1,508	262	23,771	198	5,422	3,929	2,561	1,212	100	144	5,552	69,954	11,270

Public Library Statistics, 2005. Table 5: ISSUES									
	(i)	(ii)	(iii)	(iv)	(v)	(vi)	(vii)	(viii)	(ix)
Authority		BOOK ISSUES		TOTAL	MULTIMEDIA ISSUES		TOTAL	TOTAL	Issues
	<i>Adult</i>	<i>Adult</i>	<i>Children's</i>	BOOK	<i>Sound</i>	<i>Other</i>	MULTIMEDIA	ISSUES	per head
	<i>non-fiction</i>	<i>fiction</i>		ISSUES	<i>recordings</i>		ISSUES		population
<i>County Councils:</i>									
Carlow	44,795	47,349	60,661	152,805	10,222	2,468	12,690	165,495	3.6
Cavan	20,158	36,839	87,336	144,333	1,753	0	1,753	146,086	2.6
Clare	97,808	153,967	175,953	427,728	15,993	185	16,178	443,906	4.3
Cork	255,914	610,327	563,635	1,429,876	0	0	0	1,429,876	4.4
Donegal	44,344	94,232	150,307	288,883	9,650	12,761	22,411	311,294	2.3
Dún Laoghaire-Rathdown	173,492	195,416	250,017	618,925	59,164	<	59,164	678,089	3.5
Fingal	288,737	266,922	321,385	877,044	98,171	78,550	176,721	1,053,765	5.4
Galway	101,222	181,406	232,920	515,548	11,151	0	11,151	526,699	2.5
Kerry	66,440	117,106	164,649	348,195	0	0	0	348,195	2.6
Kildare	74,586	115,701	210,790	401,077	27,283	0	27,283	428,360	2.6
Kilkenny	70,851	104,737	132,461	308,049	>	>	>	308,049	3.8
Laois	39,155	50,601	73,911	163,667	14,835		14,835	178,502	3.0
Leitrim	24,577	32,204	61,547	118,328	0	3,925	3,925	122,253	4.7
Limerick	67,113	110,687	169,695	347,495	0	0	0	347,495	2.9
Longford	24,998	35,588	36,482	97,068	3,220	0	3,220	100,288	3.2
Louth	66,297	97,500	114,443	278,240	11,349	28,952	40,301	318,541	3.1
Mayo	101,739	119,678	248,745	470,162	31,362	1,121	32,483	502,645	4.3
Meath	82,675	89,375	183,163	355,213	36,096	0	36,096	391,309	2.9
Monaghan	29,904	36,723	67,977	134,604	5,028	1,426	6,454	141,058	2.7
Offaly	28,829	55,034	89,949	173,812	3,105	8,107	11,212	185,024	2.9
Roscommon	30,837	52,065	45,033	127,935	6,909	1	6,910	134,845	2.5
Sligo	48,484	72,704	66,394	187,582	0	0	0	187,582	
South Dublin	257,090	274,229	325,647	856,967	142,400	<	142,400	999,367	4.2
Tipperary JLC	79,434	142,924	168,448	390,806	9,922	<	9,922	400,728	2.9
Waterford	26,800	55,662	90,569	173,031	8,918	168	9,086	182,117	3.2
Westmeath	55,600	76,600	115,240	247,440	17,177	<)	17,177	264,617	3.7
Wexford	51,834	105,473	160,944	318,251	11,312	0	11,312	329,563	2.8
Wicklow	106,754	149,028	165,060	420,842	0	0	24,536	445,378	3.9
Total: 28	2,360,468	3,480,077	4,533,362	10,373,906	535,020	137,664	697,220	11,071,126	3.5
<i>City Councils:</i>									
Cork	168,256	195,235	184,279	547,770	129,170	14,157	143,327	691,097	5.6
Dublin	674,900	688,386	477,914	1,841,200	192,788	118,342	311,130	2,152,330	4.3
Limerick	48,031	61,426	57,557	167,014	18,291	0	18,291	185,305	3.4
Waterford	82,644	96,195	104,211	283,050	61,365	58,747	120,112	403,162	9.0
Total: 4	973,831	1,041,242	823,961	2,839,034	401,614	191,246	592,860	3,431,894	4.8
TOTAL: 32	3,334,299	4,521,319	5,357,323	13,212,940	936,634	328,910	1,290,080	14,503,020	3.7

Public Library Statistics, 2005. Table 5.1: REGISTERED MEMBERSHIP												
	(xii)	(xi)	(xiii)			(xiv)	(xvi)	(xv)	(xvii)	(xix)	(xviii)	(xx)
Authority	REGISTERED MEMBERSHIP			<i>Children</i>	<i>Adults</i>	<i>as % of</i>	Number of items allowed		Loan Period (in weeks)	Charges		How
	<i>Children</i>	<i>Adults</i>	<i>Total</i>	Membership as % of		<i>total resident</i>	loan at any one time			<i>Children</i>	<i>Adults</i>	often
				0-14 pop.	15+ pop	<i>population</i>	<i>Children</i>	<i>Adults</i>				registered?
<i>County Councils:</i>												
Carlow	3,634	4,817	8,451	36.1	13.4	18.4	4	6	3	Free	10.00	Annually
Cavan	4,419	4,399	8,818	34.3	10.1	15.6	3	3	3	Free	Free	Annually
Clare	6,229	10,902	17,131	27.2	13.6	16.6	4	8	4	Free	5.00	Annually
Cork	24,139	31,116	55,255	33.2	12.3	17.0	2	4	2	0.50	2.50	Annually
Donegal	7,993	10,596	18,589	24.8	10.1	13.5	6	6	3	Free	Free	Annually
Dún Laoghaire- Rathdown	12,779	32,597	45,376	34.8	21.0	23.7	12	12	3	Free	Free	3 years
Fingal	25,848	60,875	86,723	58.0	40.1	44.2	6	10	3	Free	Free	3 years
Galway	15,371	20,644	36,015	35.4	12.5	17.2	3	4	3	Free	5.00	Annually
Kerry	17,806	33,732	51,538	66.7	31.9	38.9	4	6	3	Free	12.00p.a. + 0.30 PI	3 years
Kildare	18,577	10,510	29,087	47.7	8.4	17.7	8	10	3	Free	6.00	Annually
Kilkenny	7,661	11,024	18,685	42.4	17.7	23.3	3	6	3	Free	15.00	Annually
Laois	3,538	3,774	7,312	25.9	8.4	12.4	5	6	3	Free	10.00	Annually
Leitrim	2,271	4,000	6,271	41.9	19.6	24.3	n.l.	n.l.	4	Free	0.25 PI	Annually
Limerick	7,372	11,530	18,902	29.1	12.0	15.6	3	3	2	Free	Free	Annually
Longford	2,193	3,471	5,664	31.4	14.4	18.2	4	6	3	Free	2.50	Annually
Louth	5,031	7,799	12,830	21.8	9.9	12.6	5	5	3	Free	7.00	Annually
Mayo	13,079	12,378	25,457	51.7	13.4	21.7	5	5	3	Free	3.00	Annually
Meath	9,395	12,420	21,815	29.7	12.1	16.3	4	4	2	Free	Free	Annually
Monaghan	3,693	3,448	7,141	31.4	8.4	13.6	3	4	3	Free	3.00	Annually
Offaly	5,050	3,323	8,373	34.1	6.8	13.2	4	6	4	Free	10.00	Annually
Roscommon	3,027	3,985	7,012	26.5	9.4	13.0	3	6	3	Free	3.80	Annually
Sligo	4,933	13,313	18,246	40.8	28.9	31.4	10	10	3	Free	Free	Annually
South Dublin	17,942	37,074	55,016	33.4	20.0	23.0	6	10	3	Free	Free	3 years
Tipperary JLC	8,423	9,619	18,042	27.4	8.8	12.9	4	4	3	Free	6.00	Annually
Waterford	6,454	6,807	13,261	50.8	15.4	23.3	3	3	2	Free	7.62	Annually
Westmeath	4,912	7,866	12,778	29.9	14.2	17.8	3	4	3	Free	7.00	Annually
Wexford	7,986	7,343	15,329	30.1	8.2	13.1	6	10	3	Free	Free	4 years
Wicklow	9,301	17,771	27,072	36.0	20.0	23.6	3	5	3	Free	Free	Annually
Total: 28	259,056	397,133	656,189	36.7	15.9	20.5						
<i>City Councils:</i>												
Cork	7,677	13,992	21,669	36.3	13.7	17.6	4	6	2	Free	12.50	Annually
Dublin	15,828	65,336	81,164	19.7	15.7	16.4	6	8	3	Free	Free	3 years
Limerick	3,116	4,386	7,502	29.7	10.1	13.9	4	6	2	Free	10.00	Annually
Waterford	4,663	7,234	11,897	51.7	20.3	26.7	10	10	3	Free	12.00	Annually
Total: 4	31,284	90,948	122,232	25.9	15.2	17.0						
TOTAL: 32	290,340	488,081	778,421	35.1	15.8	19.9						
n.l. = no limit; pi = per issue												

Public Library Statistics, 2005. Table 6: Service points								
	(i)	(ii)	(iii)	(iv)	(v)	(vi)	(vii)	(viii)
	<b>B R A N C H E S (hours open per week)</b>						Total hours open to the public per week	Aggregate opening hours per 1000 resident population
Authority	<i>Over 40</i>	<i>30-39</i>	<i>20-29</i>	<i>10-19</i>	<i>Under 10</i>	<b>TOTAL BRANCHES</b>		
<b><i>County Councils</i></b>								
Carlow	2	0	1	0	0	<b>3</b>	111.0	125.4
Cavan	2	1	0	4	5	<b>12</b>	190.5	175.2
Clare	5	5	2	5	0	<b>17</b>	501	252.3
Cork	11	8	4	5	0	<b>28</b>	922.0	147.6
Donegal	1	7	3	3	2	<b>16</b>	424.0	160.3
Dún Laoghaire –Rathdown	2	6	1	1	0	<b>10</b>	322.5	87.4
Fingal	3	4	0	0	1	<b>8</b>	395	104.6
Galway	1	8	2	14	4	<b>29</b>	546.0	135.8
Kerry	4	0	5	0	0	<b>9</b>	353	138.5
Kildare	1	5	2	7	1	<b>16</b>	374	118.6
Kilkenny	0	4	2	2	0	<b>8</b>	222.0	143.7
Laois	0	1	1	4	7	<b>13</b>	153.5	135.8
Leitrim	2	3	0	3	1	<b>9</b>	243.5	490.8
Limerick	2	2	2	10	4	<b>20</b>	388	166.4
Longford	1	0	2	3	0	<b>6</b>	147.0	246.0
Louth	0	3	2	0	0	<b>5</b>	155	79.2
Mayo	0	4	12	1	0	<b>17</b>	440	194.8
Meath	3	3	3	3	0	<b>12</b>	343.0	133.1
Monaghan	0	1	3	1	0	<b>5</b>	116	114.7
Offaly	0	1	3	4	1	<b>9</b>	178	145.4
Roscommon	0	3	2	1	1	<b>7</b>	167	161.5
Sligo	1	1	1	2	0	<b>5</b>	134.5	120.2
South Dublin	5	1	0	1	0	<b>7</b>	300.5	65.4
Tipperary JLC	6	2	1	2	2	<b>13</b>	406.75	150.9
Waterford	0	2	1	4	1	<b>8</b>	185.5	169.4
Westmeath	2	1	0	4	0	<b>7</b>	190	137.5
Wexford	0	1	2	1	1	<b>5</b>	101.3	45.2
Wicklow	4	1	1	6	1	<b>13</b>	304.0	137.8
<b><i>Total: 28</i></b>	<b><i>58</i></b>	<b><i>78</i></b>	<b><i>58</i></b>	<b><i>91</i></b>	<b><i>32</i></b>	<b><i>317</i></b>	<b><i>8,314.55</i></b>	<b><i>4,283.5</i></b>
<b><i>City Councils</i></b>								
Cork	3	3	0	0	0	<b>6</b>	238.0	100.6
Dublin	15	8	0	0	0	<b>23</b>	950	99.6
Limerick	1	1	0	0	0	<b>2</b>	100.5	96.7
Waterford	2	0	1	0	0	<b>3</b>	120.0	139.9
<b><i>Total: 4</i></b>	<b><i>21</i></b>	<b><i>12</i></b>	<b><i>1</i></b>	<b><i>0</i></b>	<b><i>0</i></b>	<b><i>34</i></b>	<b><i>1,408.5</i></b>	<b><i>436.8</i></b>
<b>TOTAL: 32</b>	<b>79</b>	<b>90</b>	<b>59</b>	<b>91</b>	<b>32</b>	<b>351</b>	<b>9,723</b>	<b>129.1</b>

Public Library Statistics, 2005 Table 6.1 Service Points <i>Continued</i>											
	(ix)	(x)	(xi)	(xii)	(xiii)	(xiv)	(xv)	(xvi)	(xvii)	(xviii)	TOTAL NO OF SERVICE POINTS
	No. of computerised service points				CENTRES	OTHER SERVICE POINTS	MOBILE LIBRARIES				
	<i>Branches with automated systems</i>	<i>Number of OPACs</i>	<i>Branches with Internet access</i>	<i>No. of public Internet terminals</i>			<i>No. of units</i>	<i>Hours</i>	<i>per schedule of x weeks</i>	<i>Number of stops</i>	
<i>County Councils</i>											
Carlow	3	5	3	15	0	0	0				3
Cavan	2	0	7	14	0	0	0				12
Clare	17	106	17	100	0	0	0				17
Cork	17	0	28	67	0	0	6	**	2	515	34
Donegal	11	67	13	67	0	9	0.5	12.5	1	12	25.5
Dún Laoghaire - Rathdown	9	14	9	44	0	0	0				10
Fingal	11	22	11	80	0	40	3	49	1	46	51
Galway	8	21	29	86	7	0	1	17	2	65	37
Kerry	9	17	9	36	0	0	2	35	2	58	11
Kildare	8	36	15	36	0	0	1	24	2	29	17
Kilkenny	5	23	8	23	3	3	1	28	3	60	15
Laois	3	2	10	21	0	0	0				13
Leitrim	9	11	9	28	0	0	0				9
Limerick	5	5	12	30	5	0	2	27	2	63	27
Longford	6	8	6	14	0	0	0				6
Louth	5	40	5	40	0	0	1	16.3	2	43	6
Mayo	11	30	16	85	2	0	0				19
Meath	11	10	12	52	4	0	0				16
Monaghan	5	1	5	16	0	0	1	21	2	45	6
Offaly	9	9	9	48	0	0	0				9
Roscommon	5	0	6	18	0	8	0				15
Sligo	5	47	5	45	0	0	0				5
South Dublin	7	33	7	57	0	0	4	**	4	152	11
Tipperary JLC	7	13	13	46	0	0	0				13
Waterford	7	30	7	30	0	0	0				8
Westmeath	7	9	7	39	2	0	0				9
Wexford	5	16	5	18	1	2	2	24	2	107	10
Wicklow	12	5	13	29	1	20	1	16	2	33	35
Total: 28	219	580	296	1,184	25	82	25.5			1,228	449.5
<i>City Councils</i>											
Cork	6	12	6	69	0	0	1	13	1	2	7
Dublin	23	50	23	130	38	569	2	42	**	25	632
Limerick	2	2	2	16	0	1	1	20	10	20	4
Waterford	3	50	3	50	0	2	0				5
Total: 4	34	114	34	265	38	572	4			47	648
TOTAL: 32	253	694	330	1,449	63	654	29.5			1,275	1,098

Public Library Statistics, 2005. Table 6.2: Agency Services																
	(i)	(ii)	(iii)	(iv)	(v)	(vi)	(vii)	(viii)	(ix)	(x)	(xi)	(xii)	(xiii)	(xiv)	(xvi)	(xvii)
	Number of establishments served				No. of staff employed			Gross expenditure					No. of volumes on loan			
	Prisons	Hospitals	Other	TOTAL	Education	Prisons	Total	Education	Prisons	Hospitals	Other	Total	Prisons	Hospitals	Other	TOTAL
<i>County Councils:</i>																
Carlow	0	0	0	0	0	0	0	0	0	0	0	0	0	0	0	0
Cavan	1	0	0	1	0	1	1	0	10,532	0	0	10,532	1,161	0	0	1,161
Clare	0	0	0	0	0	0	0	0	0	0	0	0	0	0	0	0
Cork	0	0	0	0	0	0	0	0	0	0	0	0	0	0	0	0
Donegal	0	0	0	0	0	0	0	0	0	0	0	0	0	0	0	0
Dún Laoghaire - Rathdown	0	0	0	0	0	0	0	0	0	0	0	0	0	0	0	0
Fingal	0	0	0	0	0	0	0	0	0	0	0	0	0	0	0	0
Galway	0	0	0	0	0	0	0	0	0	0	0	0	0	0	0	0
Kerry	0	0	0	0	0	0	0	0	0	0	0	0	0	0	0	0
Kildare	0	0	0	0	0	0	0	0	0	0	0	0	0	0	0	0
Kilkenny	0	0	0	0	0	0	0	0	0	0	0	0	0	0	0	0
Laois	0	0	0	0	0	0	0	0	0	0	0	0	0	0	0	0
Leitrim	0	0	0	0	0	0	0	0	0	0	0	0	0	0	0	0
Limerick	0	0	0	0	0	0	0	0	0	0	0	0	0	0	0	0
Longford	0	0	0	0	0	0	0	0	0	0	0	0	0	0	0	0
Louth	0	0	0	0	0	0	0	0	0	0	0	0	0	0	0	0
Mayo	0	0	0	0	0	0	0	0	0	0	0	0	0	0	0	0
Meath	0	0	0	0	0	0	0	0	0	0	0	0	0	0	0	0
Monaghan	0	0	0	0	0	0	0	0	0	0	0	0	0	0	0	0
Offaly	0	0	0	0	0	0	0	0	0	0	0	0	0	0	0	0
Roscommon	0	0	0	0	0	0	0	0	0	0	0	0	0	0	0	0
Sligo	0	0	1	1	0	0	0	0	0	0	1,000	1,000	0	0	60	60
South Dublin	0	0	0	0	0	0	0	0	0	0	0	0	0	0	0	0
Tipperary JLC	0	0	0	0	0	0	0	0	0	0	0	0	0	0	0	0
Waterford	0	0	0	0	0	0	0	0	0	0	0	0	0	0	0	0
Westmeath	0	0	0	0	0	0	0	0	0	0	0	0	0	0	0	0
Wexford	0	0	0	0	0	0	0	0	0	0	0	0	0	0	0	0
Wicklow	1	0	0	1	0	1	1	0	2,500	0	0	2,500	1,119	0	0	1,119
<i>Total: 28</i>	<i>2</i>	<i>0</i>	<i>1</i>	<i>3</i>	<i>0</i>	<i>2</i>	<i>2</i>	<i>0</i>	<i>13,032</i>	<i>0</i>	<i>1,000</i>	<i>14,032</i>	<i>2,280</i>	<i>0</i>	<i>60</i>	<i>2,340</i>
<i>City Councils</i>																
Cork	1	0	0	1	0	0	0	0	1,900	0	0	1,900	**	0	0	0
Dublin	8	0	0	8	0	3	3	0	133,545	0	0	133,545	**	0	0	0
Limerick	0	0	0	0	0	0	0	0	0	0	0	0	0	0	0	0
Waterford	0	0	0	0	0	0	0	0	0	0	0	0	0	0	0	0
<i>Total: 4</i>	<i>9</i>	<i>0</i>	<i>0</i>	<i>9</i>	<i>0</i>	<i>3</i>	<i>3</i>	<i>0</i>	<i>135,445</i>	<i>0</i>	<i>0</i>	<i>135,445</i>	<i>0</i>	<i>0</i>	<i>0</i>	<i>0</i>
<b>TOTAL: 32</b>	<b>11</b>	<b>0</b>	<b>1</b>	<b>12</b>	<b>0</b>	<b>5</b>	<b>5</b>	<b>0</b>	<b>148,477</b>	<b>0</b>	<b>1,000</b>	<b>149,477</b>	<b>2,280</b>	<b>0</b>	<b>60</b>	<b>2,340</b>



PUBLIC LIBRARY STATISTICS, 2005. Table 7: SERVICES TO SCHOOLS - Number of schools and pupils served.												
	(i)	(ii)	(iii)	(iv)	(v)	(vi)	(vii)	(viii)	(ix)	(x)	(xi)	(xii)
	NUMBER OF SCHOOLS SERVED						PUPIL POPULATION SERVED					
Authority	Primary	Secondary	Vocational	Comprehensive	Community	TOTAL	Primary	Secondary	Vocational	Comprehensive	Community	TOTAL
<i>County Councils:</i>												
Carlow	38	0	0	0	0	38	5,672	0	0	0	0	5,672
Cavan	79	0	0	0	0	79	7,610	0	0	0	0	7,610
Clare	120	0	0	0	0	120	**	**	**	**	**	**
Cork	290	0	0	0	0	290	34,445	0	0	0	0	34,445
Donegal	130	23	0	0	0	153	**	**	0	0	0	**
Dún Laoghaire - Rathdown	66	0	0	0	0	66	16,440	0	0	0	0	16,440
Fingal	83	0	0	0	0	83	23,791	0	0	0	0	23,791
Galway	233	0	0	0	0	233	23,769	0	0	0	0	23,769
Kerry	144	0	0	0	0	144	14,790	0	0	0	0	14,790
Kildare	101	0	0	0	0	101	21,659	0	0	0	0	21,659
Kilkenny	77	4	0	0	0	81	9,481	1,500	0	0	0	10,981
Laois	70	0	0	0	0	70	6,777	0	0	0	0	6,777
Leitrim	41	0	0	0	0	41	3,027	0	0	0	0	3,027
Limerick	116	0	0	0	0	116	13,391	0	0	0	0	13,391
Longford	40	0	0	0	0	40	3,768	0	0	0	0	3,768
Louth	73	0	0	0	0	73	13,075	0	0	0	0	13,075
Mayo	187	0	0	0	0	187	13,628	0	0	0	0	13,628
Meath	110	0	0	0	0	110	19,041	0	0	0	0	19,041
Monaghan	64	0	0	0	0	64	6,291	0	0	0	0	6,291
Offaly	68	0	0	0	0	68	8,877	0	0	0	0	8,877
Roscommon	95	4	2	0	0	101	6,353	3,401	496	0	0	10,250
Sligo	0	0	0	0	0	0	0	0	0	0	0	0
South Dublin	96	0	0	0	0	96	27,660	0	0	0	0	27,660
Tipperary JLC	160	0	0	0	0	160	16,909	0	0	0	0	16,909
Waterford	57	0	0	0	0	57	6,638	0	0	0	0	6,638
Westmeath	77	0	0	0	0	77	9,648	0	0	0	0	9,648
Wexford	105	0	0	0	0	105	15,474	0	0	0	0	15,474
Wicklow	85	0	0	0	0	85	13,670	0	0	0	0	13,670
Total: 28	2,805	31	2	0	0	2,838	341,884	4,901	496	0	0	347,281
<i>City Councils:</i>												
Cork	62	0	0	0	0	62	14,397	0	0	0	0	14,397
Dublin	226	0	0	0	0	226	43,679	0	0	0	0	43,679
Limerick	30	0	0	0	0	30	6,600	0	0	0	0	6,600
Waterford	21	0	0	0	0	21	5,765	0	0	0	0	5,765
Total 4	339	0	0	0	0	339	70,441	0	0	0	0	70,441
<b>TOTAL:32</b>	<b>3,144</b>	<b>31</b>	<b>2</b>	<b>0</b>	<b>0</b>	<b>3,177</b>	<b>412,325</b>	<b>4,901</b>	<b>496</b>	<b>0</b>	<b>0</b>	<b>417,722</b>

PUBLIC LIBRARY STATISTICS, 2005. Table 7.1: SERVICES TO SCHOOLS - Stock and issues								Nos.
	(xiii)	(xiv)	(xv)	(xvi)	(xvii)	(xviii)	(xix)	(xx)
	S T O C K			Items per head of pupil pop.	I S S U E S			Issues per head of pupil pop.
	Books	Multimedia	TOTAL		Books	Multimedia	TOTAL	
County Councils:								
Carlow	6,450	0	6,450	1.1	**	**	**	**
Cavan	30,968	0	30,968	4.1	12,093	0	12,093	1.6
Clare	counted with books - see Table 4				**	**	**	**
Cork	22,574	0	22,574	0.7	22,574	0	22,574	0.7
Donegal	96,157	0	96,157	**	**	**	**	**
Dún Laoghaire –Rathdown	109,794	0	109,794	6.7	**	**	**	**
Fingal	42,174	1,279	43,453	1.8	30,611	462	31,073	1.3
Galway	126,735	0	126,735	5.3	32,902	0	32,902	1.4
Kerry	38,067	0	38,067	2.6		0	0	0.0
Kildare	18,760		18,760	0.9	14,544	74	14,618	0.7
Kilkenny	75,000	3,000	78,000	7.1	198,000	10,500	208,500	19.0
Laois	5,717	0	57,717	8.5	3,800	0	3,800	0.6
Leitrim	**	**	**	**	17,000	0	17,000	5.6
Limerick	**	**	**	**	**	**	**	**
Longford	47,600	0	47,600	12.6	6,900	0	6,900	1.8
Louth	55,814	0	55,814	4.3	55,814	680	56,494	4.3
Mayo	149,752	0	149,752	11.0	**	**	**	**
Meath	**	**	**	**	**	**	**	**
Monaghan	21,145	0	21,145	3.4	15,277	0	15,277	2.4
Offaly	58,465	0	58,465	6.6	30,000	0	30,000	3.4
Roscommon	27,000	0	27,000	2.6	16,600	0	16,600	1.6
Sligo	0	0	0	**	0	0	0	**
South Dublin	145,155	0	145,155	5.2	24,366	0	24,366	0.9
Tipperary JLC	88,179	0	0	0.0	**	**	**	**
Waterford	41,977	36	42,013	6.3	18,427	58	18,485	2.8
Westmeath	50,583	0	50,583	5.2	23,782	0	23,782	2.5
Wexford	9,700	102	9,802	0.6	3,645	0	3,645	0.2
Wicklow	38,441	0	38,441	2.8	**	**	**	**
Total: 28	1,306,207	4,417	1,274,445					
City Councils:								
Cork	143,884	0	143,884	10.0	17,111	0	17,111	1.2
Dublin	276,311	0	276,311	6.3	873,590	0	873,590	20.0
Limerick	98,135	0	98,135	14.9	6,600	0	6,600	1.0
Waterford	**	**	**	**	**	**	**	**
Total: 4	518,330	0	518,330					
TOTAL:32	1,824,537	4,417	1,792,775					

### Notes on the 2005 returns

A small number of authorities are unable to supply detailed data as requested). An Chomhairle has used other data at its disposal to apply weightings to these figures in order to provide a more accurate picture. The weightings relate mainly to, collections, issues and membership figures. All data substituted by An Chomhairle has been printed in green.

**Table 1:** Income remains the same as for previous years. Details of capital income as notified by the contributing authorities is contained on Table 2.2.

Grants from the Department of the Environment, Heritage & Local Government made have been designated as Capital for the purposes of this publication. Where authorities omitted receipt of these funds, the amount has been supplied by An Chomhairle Leabharlanna (see Table 2)

**Table 3:** *Staffing* has been simplified to make the table more easily readable. It no longer contains details of grades by location (headquarters, branches or other service points). This information is still available on request from An Chomhairle.

Authorities are asked to provide details of staff complement as full-time equivalents (FTE). As some authorities supply details of staff in post rather than staff complement this has led to some fluctuation in the returns. The number of Branch Librarians was usually given in the returns as an actual number rather than as FTE although for 2003 onwards the convention of expressing posts as full-time equivalents has been strictly implemented hence the apparent reduction in para-professional posts (includes branch librarians). Some authorities do not count library support staff, such as cleaners, as the part of the library's staff complement. These two changes are reflected in the apparent decrease in staffing for 2003. The 2003 figures accordingly present a more accurate picture of current staffing levels.. This table has been revised retrospectively since the publication of *Public Library Statistics: Actuals, 2004*.

Fingal and Dublin City: The figures given in Table 3 relate to staff complement; figure in Table 3.3 show the actual number of filled posts.

Similarly, **Table 4:** *Collections - books and serials* and **Table 4.2:** *Collections – multimedia items* no longer categorizes withdrawn stock items. They now give the total figure per authority. The full set of information is still available on request from An Chomhairle.

Kerry County Library: Stock holdings for schools includes additions to stock between 2000 and 2006.

Kildare County Library: An ongoing changeover in library management systems has resulted in Kildare's stock figures for 2005 being limited to those service points which have been automated.

**Table 5.1:** *Registered membership figures:* In 2001 the definition of 'number of registered members' was redefined to 'number of active members', an active member being someone who had borrowed at least one item during the period January 1st to December 31st. This redefinition was introduced in order to eliminate the perceived advantage of having long registration cycles, resulting in membership files which included an unknown number of lapsed users. The change in definition produced a decrease in the number of reported membership figures in those authorities whose registration cycles exceeded one year. The change in definition was introduced in an attempt to present a more complete picture of registered membership.

**Table 6:** *Service points* includes data on the number of service points with online public access catalogues (Opacs) and Internet access. In both cases, the number of available terminals is also given.

This Table also gives details of the overall, planned opening hours per week for the branch libraries.

**Table 6.1:** *Agency services* contains information on services provided by public library authorities to other organisations, usually on a cost recovery basis.

**Table 7** details library services to schools as provided by the library authority.

# Appendix 1: Population tables from 1996 and 2002 Censuses

	1996			2002			%
AUTHORITY	Population 0-14	Population 15+	Total population	Population 0-14	Population 15+	Total population	change on 1996
Counties							
Carlow	10,284	31,332	41,616	10,063	35,951	46,014	10.6
Cavan	13,445	39,499	52,944	12,891	43,655	56,546	6.8
Clare	23,465	70,541	94,006	22,874	80,403	103,277	9.9
Cork	72,439	220,884	293,323	72,697	252,070	324,767	10.7
Donegal	33,180	96,814	129,994	32,255	105,320	137,575	5.8
Dún Laoghaire- Rathdown	39,617	150,382	189,999	36,757	155,035	191,792	0.9
Fingal	45,752	121,931	167,683	44,592	151,821	196,413	17.1
Galway	44,621	144,233	188,854	43,478	165,599	209,077	10.7
Kerry	29,832	96,298	126,130	26,714	105,813	132,527	5.1
Kildare	35,772	99,220	134,992	38,909	125,035	163,944	21.4
Kilkenny	18,640	56,696	75,336	18,079	62,260	80,339	6.6
Laois	13,623	39,322	52,945	13,656	45,118	58,774	11.0
Leitrim	5,847	19,210	25,057	5,422	20,377	25,799	3.0
Limerick	27,259	85,744	113,003	25,303	95,978	121,281	7.3
Longford	7,512	22,654	30,166	6,975	24,093	31,068	3.0
Louth	22,424	69,742	92,166	23,075	78,746	101,821	10.5
Mayo	27,438	84,086	111,524	25,281	92,165	117,446	5.3
Meath	28,607	81,125	109,732	31,666	102,339	134,005	22.1
Monaghan	13,200	38,113	51,313	11,774	40,819	52,593	2.5
Offaly	15,018	44,099	59,117	14,799	48,864	63,663	7.7
Roscommon	12,307	39,668	51,975	11,417	42,357	53,774	3.5
Sligo	12,927	42,894	55,821	12,089	46,111	58,200	4.3
South Dublin	59,294	159,434	218,728	53,671	185,164	238,835	9.2
Tipperary JLC	32,537	100,998	133,535	30,707	109,424	140,131	4.9
Waterford	12,667	39,473	52,140	12,700	44,252	56,952	9.2
Westmeath	15,745	47,569	63,314	16,444	55,414	71,858	13.5
Wexford	25,884	78,487	104,371	26,515	90,081	116,596	11.7
Wicklow	25,585	77,098	102,683	25,826	88,850	114,676	10.6
Total: 28	724,921	2,197,546	2,922,467	706,629	2,493,114	3,199,743	9.5
Cities							
Cork	25,735	101,452	127,187	21,135	101,927	123,062	-3.2
Dublin	88,031	393,823	481,854	80,172	415,609	495,781	2.9
Limerick	11,177	40,862	52,039	10,475	43,548	54,023	3.8
Waterford	9,560	32,980	42,540	9,017	35,577	44,594	4.8
Total: 4	134,503	569,117	703,620	120,799	596,661	717,460	2.0
TOTAL: 32	859,424	2,766,663	3,626,087	827,428	3,089,775	3,917,203	8.0