



PUBLIC LIBRARY AUTHORITY  
STATISTICS  
**ACTUALS**  
**2007**

**An Chomhairle Leabharlanna** was established by the *Public Libraries Act, 1947*. The functions of the Council, as outlined in the *Local Government Act, 2001* are:

- to provide advice and assistance to local authorities in relation to the improvement of the public library service
- to make such recommendations to the Minister in relation to the public library service as it sees fit
- to maintain and operate the central library established under Section 2 of the *Public Libraries Act, 1947 (No.40 of 1947)*
- to promote and facilitate library co-operation

Statistical series issued by An Chomhairle Leabharlanna:

*Public Library Authorities Annual Budgets*  
*Public Library Authority Statistics - Actuals.* (Annual)

Statistical data on Irish public libraries also appear in:

*Public Library Statistics – Estimates & Actuals.* - London: CIPFA, (Annual)

**Cover photograph: Scariff Library, Clare County Council, one of 7 new libraries providing an expanded service in 2007.**

# CONTENTS

<b>Introduction .....</b>	<b>1</b>
<b>Library Overview 2006 TO 2007 .....</b>	<b>3</b>
<b>Summary of Developments: 2003-2007 .....</b>	<b>6</b>
Chart 1: Expenditure under individual budget headings .....	3
Chart 2: Expenditure on stock, 2003-2007 .....	6
Chart 3: Book stock, 2003-2007.....	7
Chart 4: Stock additions and withdrawals, 2003-2007 .....	7
Chart 5: Loans, 2003-2007 .....	8
Chart 6: Registered membership, 2003-2007 .....	8
Chart 7: Number of service points by hours open per week : .....	9
<b>Summary Tables, 2003-2007 .....</b>	<b>10</b>
Summary table 1: Income: recurrent and capital (€).....	10
Summary table 1.1: DOEHLG's capital allocations.....	10
Summary table 2: Expenditure: recurrent and capital (€) .....	10
Summary table 3: Staffing* (Nos.).....	11
Summary table 4: Collections (Nos.).....	11
Summary table 5: Issues (Nos.).....	11
Summary table 5.1: Registered Membership (Nos.).....	11
Summary table 6: Service points (Nos.).....	12
Summary table 7: Services to schools (Nos.) .....	12
Summary table 7.1: National primary school pupil population.....	12
<b>Tables 2007 .....</b>	<b>13</b>
Income .....	13
Capital Income .....	14
Department of the Environment, Heritage & Local Government Grant Allocations.....	14
Expenditure - Salaries and stock.....	15
Expenditure (continued) - Premises, transport, etc. ....	16
Capital Expenditure .....	17
Staffing.....	18
Staffing (continued) .....	19
Staffing - Dún Laoghaire Rathdown County.....	20
Staffing - Fingal County.....	20
Staffing - South Dublin County.....	20
Staffing - Dublin City .....	20
Collections - Books and serials.....	21
Collections – Multimedia .....	22
Collections - Multimedia - additions and withdrawals .....	23
Usage – Issues.....	24
Usage – Number of registered membership and charges .....	25
Service points.....	26
Agency services.....	27
Services to schools - Number of schools and pupils served .....	28
Services to schools - Stock and issues.....	29
<b>Notes on the analysed returns.....</b>	<b>30</b>
<b>Appendix 1: Population tables .....</b>	<b>31</b>



## INTRODUCTION

*Branching Out*, the government's policy document for the future of the public library service, was launched by the Minister for the Environment and Local Government in 1998. This report on library authority statistical returns for 2007 provides a snapshot of the *Branching Out* programme of development.

The number of libraries increased to 351 in 2007. Local authorities opened seven new libraries in 2007, all offering increased services and co-funded by the Minister for the Environment, Heritage and Local Government:

- Ballybane Library, Galway County Council,
- Bunclody Library, Wexford County Council,
- Leixlip Library, Kildare County Council,
- Castlebar Library and Headquarters, Mayo County Council,
- Mountrath Library, Laois County Council,
- Scariff Library, Clare County Council and
- Watch House Cross Library, Limerick City Council<sup>1</sup>.



Local authorities increased the opening hours by 30% in the past decade (from 7,761 hours per week in 1998 to 10,122 in 2007, excluding mobile libraries). Most libraries now open on Saturdays and in the evening. Staffing grew by 36% from 1,302 to 1,774 from 1998 to 2007 to accommodate the improvements.

The number of public access Internet terminals in 2007 for public use was 1,697. 394.8 sessions per 1000 population were recorded<sup>2</sup>.

Web-based services which unlocked materials only available heretofore in the library were also targeted. This resulted in the development of [www.askaboutireland.ie](http://www.askaboutireland.ie), the co-operative online resource which showcases, through a single point of access, the local studies collections in library authorities.

An Chomhairle commends the authorities on these improvements and acknowledges the support of the Minister in providing financial assistance.

There are, however, measures to be addressed in order to make the public library service open and welcoming spaces in all communities. Attention is drawn to sustaining investment and increasing the usage of libraries for all members of society. The following issues are of particular concern:

---

<sup>1</sup> Details of these libraries can be seen on [www.librarybuildings.ie](http://www.librarybuildings.ie)

<sup>2</sup> Service Indicators report of the Local Government Management Services Board, 2008.

- Charges for use of the library are a barrier. In 2007, 20 authorities levied an annual charge on adult members ranging from €2.50 to €15.00 per annum. Adult membership is declining. Charges, including internet access, should be reassessed in order to deliver all services to more users.
- Relevant stock remains crucial, particularly as part of a wider community recovery strategy, notwithstanding the severe economic climate in which local authorities now operate.

An Chomhairle thanks the Mayors, Members, County and City Managers and County and City Librarians and staff of the public library authorities together with the Department of the Environment, Heritage and Local Government for their continuing support and for their assistance in compiling these figures. An Chomhairle acknowledges the support of the Department of Education and Science in providing data relating to the Primary School Library Grant Scheme.

*Norma Mc Dermott*

Norma McDermott  
Director

## Library Overview 2006 TO 2007

An Chomhairle Leabharlanna is once again pleased to present the detailed statistical returns from 32 local authority library services in a unified and tabulated form.

These returns for the year 2007 show sustained improvements in service delivery throughout the country. There is a demonstrative improvement in services provided by individual authorities contributing to a very positive national return.

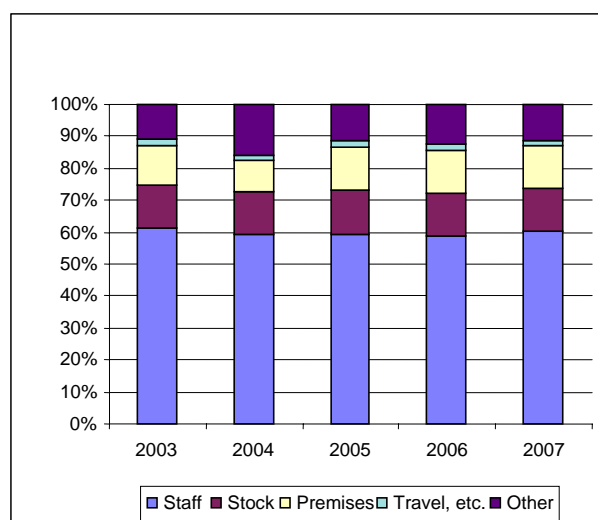
The major changes recorded in the 2007 returns submitted by the 32 library authorities in Ireland, when compared with the previous year are, as follows:

### Income

- Recurrent income increased by 11% from €107,401,132 to €119,371,132;
- Combined recurrent and capital incomes reported by local authorities increased by 15% from €119,198,848 to €137,062,946;
- This represents an increase in the per capita figure from €30.43 to €32.33 for total income.

### Expenditure

- Recurrent expenditure has risen by 10% from €106,954,748 to €117,954,141;
- Expenditure on staff rose by 11.6% from €62.9 million to €70.2 million;
- Expenditure on stock has risen by 8% from €14,554,312 to €15,697,913. Per capita expenditure has fallen from €3.72 per head of population to €3.70;
- Expenditure on stock in 2007 accounted nationally for 13.3% of the overall budget as opposed to 13.6% in the previous year.



**Chart 1: Expenditure under individual budget headings shown as a % of total expenditure, 2003- 2007**

- Capital expenditure as recorded by public library authorities decreased by 8% from €18,941,550 to €17,452,521.
- The Department of the Environment, Heritage and Local Government provided capital grants totaling €17.4 million which included €15.8 million for library buildings, mobile libraries and delivery vans, €0.8 million subsidy on leases, and €0.8 million for the Public Library Research Programme, Changing Libraries Programme which provides electronic resources and Readiscover, the reader development support for library authorities.
- Total local authority expenditure on libraries (recurrent and capital) increased by 7.6% from €125,896,298 to €135,406,662.

## Collections

Figures for 2007 recorded an increase in the number of print based materials being added to stock, as compared with 2006 and higher lending of multimedia resources:

- Public libraries collectively hold 13.4 million items of stock;
- 1.25million new items of stock were offered to the public during 2007;
- 135,138 Multimedia materials were offered,
- 1,119,680 books were added to stock – an increase of 2% over the 2006 figure of 1,100,255;
- 698,212 books were withdrawn in 2007.

## Issues

- Total items loaned increased by 2% from 14,525,273 to 14,848,681;
- Multimedia issues increased by 21% from 1,430,157 to 1,729,016;
- Book issues rose by 0.2% from 13,095,115 to 13,119,665.

## Membership

Children's membership increases while adult levels decrease overall.

- Registered membership decreased by 2.8% from 788,438 to 766,642;
- The percentage of the population registered as members of the public library service is 18%;



- Children's membership in 2007 of 298,608 showed a 2% increase on 293,083 in 2006;
- Adult membership fell by 5.5% from 495,355 to 468,034.

### Service points

- The total number of branch libraries open to the public has decreased temporarily from 354 to 351<sup>3</sup>;
- Notwithstanding the temporary decrease, 92 libraries are open to the public for more than 40 hours per week, compared to 86 in the previous year;
- The overall number of hours open to the public has increased by 265 per week, or 3%, from 10,073 to 10,338.5;
- 341 or 97% of the total of 351 branches provide public access to the Internet via 1,697 dedicated terminals;

---

<sup>3</sup> 3 additional libraries were closed for refurbishment during 2007: Garristown and Malahide (Fingal County Council); Tallaght (South Dublin County Council).

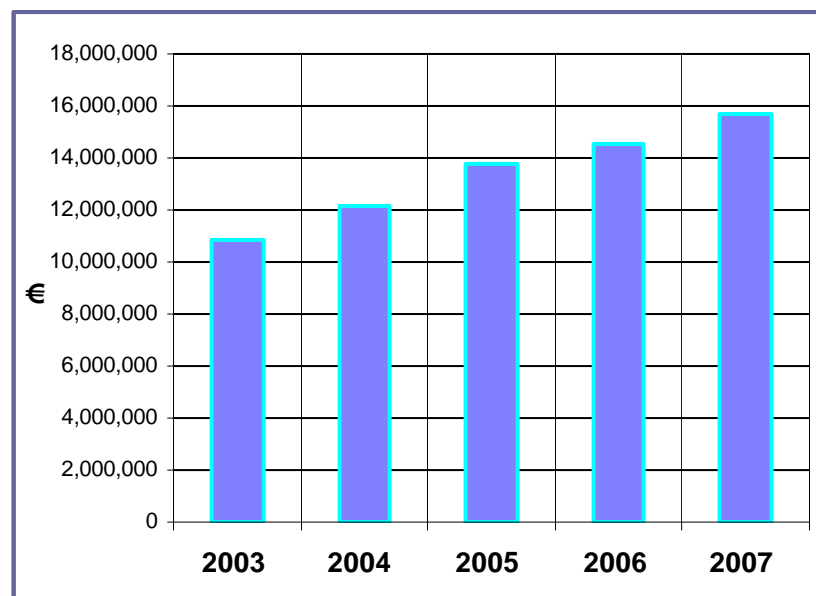
## Summary of Developments: 2003-2007

### Income (see Summary Table 1)

- Recurrent income increased by 47% from €81.4 million in 2003 to €119.4 million in 2007.

### Expenditure (see Summary Table 2)

- Recurrent expenditure increased by 47% from €80.35 million to €118 million giving a five year total of €493 million;
- Current expenditure on stock increased by 44.5% from €10.9 million to €15.7 million. This represents a five year total of €67 million;

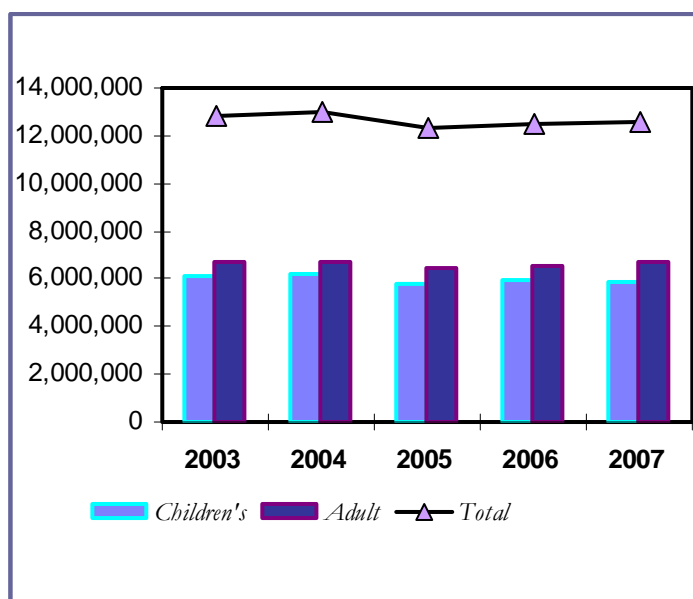


*Chart 2: Expenditure on stock, 2003-2007*

- Capital expenditure reported by public library authorities increased by 30% from €13.4 million to €17.45 million giving a five year total of €80.2 million;
- Total expenditure (recurrent and capital) increased by 44.5% from €93.7 million to €135 million, giving a five year total of €573 million.

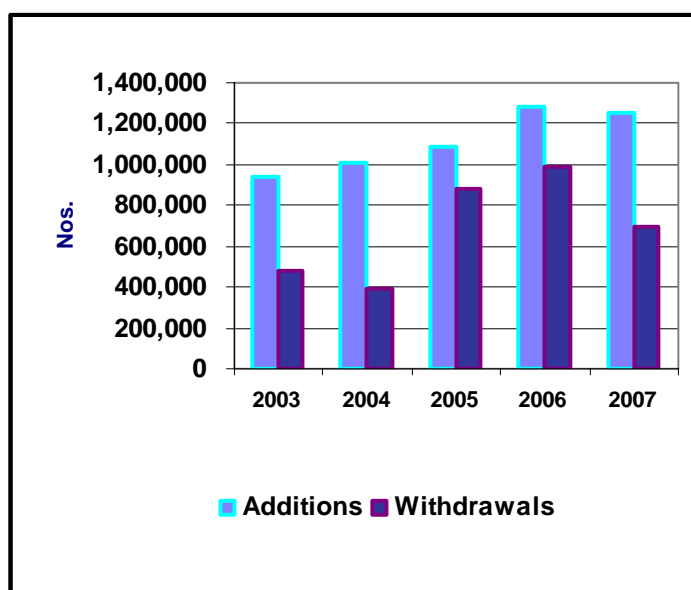
### Collections (see Summary Table 4)

- Multimedia stock increased by 104% from 424,632 to 866,225 in the five years to 2007;



*Chart 3: Book stock, 2003-2007*

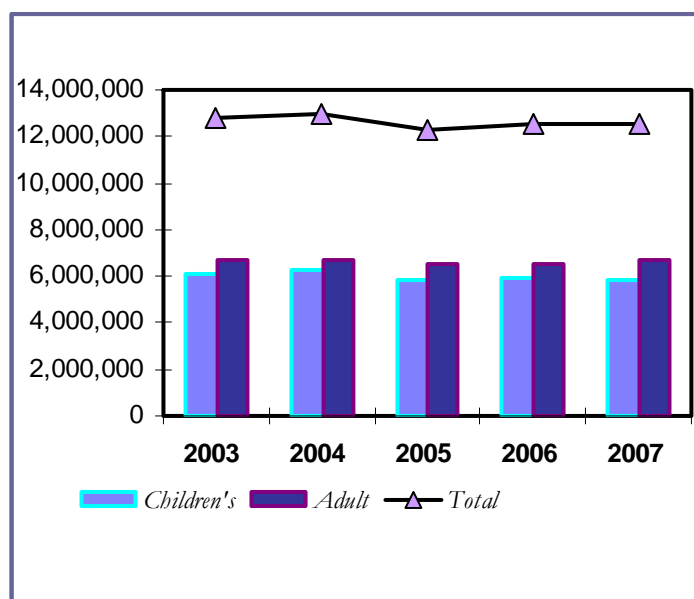
- Collections of books have decreased by 2% from 12.8 million to 12.6 million.



*Chart 4: Stock additions and withdrawals, 2003-2007*

#### **Loans** (see Summary Table 5)

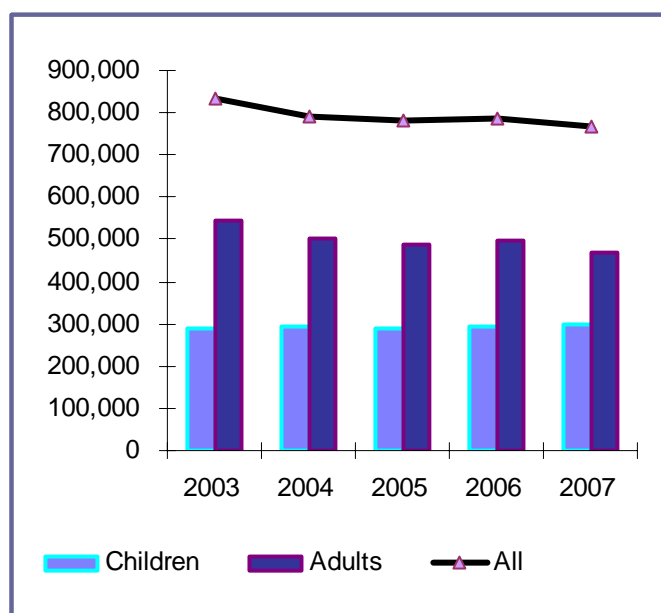
- Multimedia stock loans showed an increase of 74% from 1 million to 1.7 million;
- Book loans recorded a decrease of 1.4%, from 13.3 to 13.1 million;



**Chart 5: Loans, 2003-2007**

- Total loans (books + multimedia) recorded an overall increase of 4% from 14.3 million to 14.8 million.

#### Membership (see Summary Table 5.1)

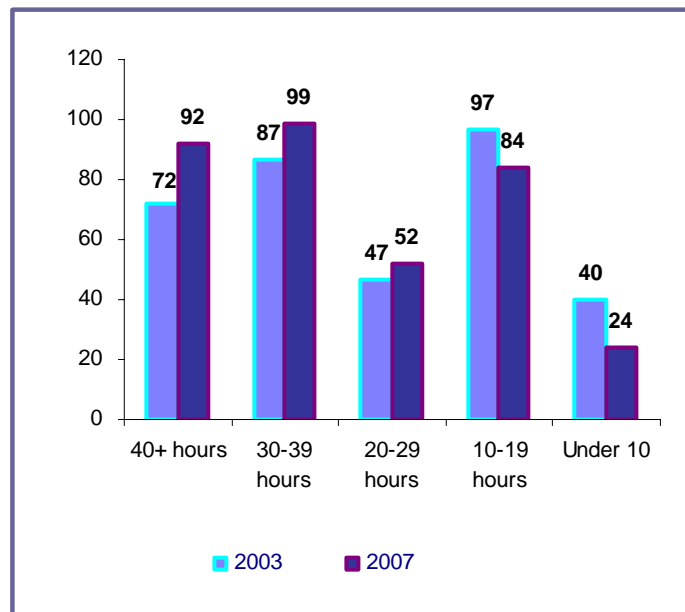


**Chart 6: Registered membership, 2003-2007**

- Active membership decreased by 8% from 833,968 to 766,642;
- The percentage of the population registered as members of the public library service fell from 20 to 18%;
- Children's membership increased by 4% from 287,676 to 298,608;
- Adult membership decreased by 14% from 546,292 to 468,034.

### Service points (see Summary Table 6)

- The total number of branch libraries increased by 8 since 2003;
- Opening hours per week are now 7% higher than in 2003;



**Chart 7: Number of service points by hours open per week : 2007 compared with 2003.**

- The number of branch libraries open for more than 40 hours per week increased by 20 since 2003;
- The number of mobile library units increased from 29 to 30.5.

## Summary Tables, 2003-2007

**Summary table 1: Income: recurrent and capital (€)**

Recurrent income	2003	2004	2005	2006	2007	% change over 2003	% change over 2006
Total	81,417,857	89,710,317	100,612,35	107,401,132	119,371,75	+46.6	+11.1
Per capita	20.78	22.90	25.68	27.42	28.15		
Capital income <sup>(1)</sup>	10,696,233	7,738,614	12,243,026	11,797,716	17,691,192	+65.4	+50
<b>Total income</b> (recurrent plus capital)	<b>92,114,090</b>	<b>97,448,931</b>	<b>112,855,379</b>	<b>119,198,848</b>	<b>137,062,946</b>	<b>+48.8</b>	<b>+15</b>
Per capita	23.52	24.88	28.81	30.43	32.33		

Note: <sup>(1)</sup> Includes capital grants made by the Minister for the Environment, Heritage and Local Government. The capital income returns are as notified by local authorities.

**Summary table 1.1: Department of the Environment, Heritage and Local Government's capital allocations (€)**

	2003	2004	2005	2006	2007
Buildings & vehicles	9,514,962	8,525,908	13,959,732.3	12,042,348	15,767,789
Subsidy [Leases & loans]	875,019	^	^	^	^
Information Society	2,108,725	^	^	^	^
Stock	0	^	^	^	^
Additional funds	188,062	^	^	^	^
<b>TOTAL</b>	<b>12,686,768</b>	<b>8,525,908</b>	<b>13,959,732.34</b>	<b>12,042,348</b>	<b>15,767,789</b>

Data supplied by the Department of the Environment, Heritage and Local Government.

**Summary table 2: Expenditure: recurrent and capital (€)**

Recurrent expenditure	2003	2004	2005	2006	2007	% change over 2003	% change over 2006
Total	80,304,838	88,821,984	98,602,596	106,954,748	117,954,141	+46.9	+10.3
Per capita: Acquisitions	2.77	3.11	3.52	3.72	3.70		
Total	20.50	22.67	25.17	27.30	27.82		
Capital expenditure	13,410,572	15,313,075	15,122,291	18,941,550	17,452,521	+30.1	-7.9
<b>Total expenditure</b> (recurrent plus capital)	<b>93,715,410</b>	<b>104,135,059</b>	<b>113,724,887</b>	<b>125,896,298</b>	<b>135,406,662</b>	<b>+44.5</b>	<b>+7.6</b>
Per capita	23.92	26.58	29.03	32.14	31.94		

Data supplied by public library authorities

**Summary table 3: Staffing\* (Nos.)**

	2003	2004	2005	2006	2007
Professional	366	372	375	404	431
Para-professional	1,015	1,044	1,059	1,122	1,125
Support	215	211	213	213	219
<b>Total</b>	<b>1,596</b>	<b>1,627</b>	<b>1,647</b>	<b>1,740</b>	<b>1,775</b>

\* see *Notes on the returns* (Page 31)

**Summary table 4: Collections (Nos.)**

	2003	2004	2005	2006	2007	% change over 2003	% change over 2006
<b>Books:</b>	12,808,043	12,966,368	12,315,589 *	12,497,148	12,566,227	-1.9	+0.6
<b>Multimedia items:</b>	424,632	419,096	475,627	741,247	866,225	+104	+16.9
<b>Additions to stock:</b>							
Books	891,751	952,340	1,012,634	1,100,255	1,119,680	+25.6	+1.8
Multimedia items	51,805	53,291	69,954	179,044	135,138	+16.1	-24.5
<b>Additions per head of population:</b>	0.2	0.3	0.3	0.3	0.3		
<b>Withdrawals:</b>							
Books	484,448	389,669	882,778	985,653	698,212	+44.1	-29.2
Multimedia items	11,792	16,034	11,270	25,945	28,646	+14.3	+10.4

\* see *Notes on the returns* (Page 31)

**Summary table 5: Issues (Nos.)**

	2003	2004	2005	2006	2007	% change over 2003	% change over 2006
<b>Books</b>							
Children's	5,063,642	5,356,640	5,357,323	5,424,129	5,286,781	+4.4	-2.5
Adult issues	8,237,447	8,245,405	7,855,618	7,670,986	7,832,884	-4.9	+2.1
<b>Total book issues</b>	<b>13,301,089</b>	<b>13,602,045</b>	<b>13,212,941</b>	<b>13,095,11</b>	<b>13,119,665</b>	<b>-1.4</b>	<b>+0.2</b>
Multimedia	996,056	1,163,130	1,290,080	1,430,157	1,729,016	+73.6	+20.9
<b>Total issues</b>	<b>14,297,145</b>	<b>14,765,175</b>	<b>14,503,021</b>	<b>14,525,27</b>	<b>14,848,681</b>	<b>+3.9</b>	<b>+2.2</b>

**Summary table 5.1: Registered Membership (Nos.)**

	2003	2004	2005	2006	2007	% change over 2003	% change over 2006
Children (0-14)	287,676	292,610	291,093	293,083	298,608	+3.8	+1.9
Adults (15+)	546,292	499,810	490,145	495,355	468,034	-14.3	-5.5
<b>Total</b>	<b>833,968</b>	<b>792,420</b>	<b>781,238</b>	<b>788,438</b>	<b>766,642</b>	<b>-8.1</b>	<b>-2.8</b>
As % of population							
Children (0-14)	34.8	35.4	35.2	35.4	34.5		
Adult (15+)	17.7	16.2	15.9	16	14		
<b>Total population</b>	<b>21.3</b>	<b>20.2</b>	<b>19.9</b>	<b>20.1</b>	<b>18.1</b>		

**Summary table 6: Service points (Nos.)**

	2003	2004	2005	2006	2007
Branch libraries	343	349	351	354	351
Total number of hours open per week	8,984	9,605	9,723	10,073	10,338.5
Other service points *	622	652	654	698	705
Centres	82	98	63	58	65
Mobile units	29	31	29.5**	29.5**	30.5**
Number of stops	1,285	1,284	1,275	1,238	1,343
Agency services	23	13	12	12	10
<b>Total number of service points</b>	<b>1,099</b>	<b>1,143</b>	<b>1,110</b>	<b>1,152</b>	<b>1,161</b>

\* Other service points include non-agency services to hospitals, day centres, etc.

\*\* Includes cross border mobile which is shared by Donegal County council and the Western Education and Library Board

**Summary table 7: Services to schools (Nos.)**

	2003	2004	2005	2006	2007
No. of schools served	3,285	3,266	3,177	3,253	3,271
Pupil population served	462,903	447,543	447,142	460,004	544,669

Note: Includes primary and second level schools

**Summary table 7.1: National primary school pupil population**

Academic year	No. of pupils *	% change on previous year	Primary pupils as % of 0-14 population	Grant per pupil €	Total allocation €
<b>2007/2008</b>	<b>486,444</b>	<b>+3.3</b>	<b>56.3</b>	<b>4.52</b>	<b>2,198,727</b>
2006/2007	470,944	+2.8	54.5	4.52	2,128,667
2005/2006	458,114	+2.2	55.4	4.52	2,070,675
2004/2005	448,243	+0.62	54.2	4.52	2,026,058
2003/2004	445,444	+1.0	53.8	3.40	1,514,510

\* Figures supplied by the Department of Education & Science

**Key:**

0 Denotes nil or not applicable

\* \* Denotes data not available

// Denotes too small to be significant

The data given is as supplied by individual authorities to An Chomhairle Leabharlanna. All additional data supplied by An Chomhairle from other sources is shown in green.



Public Library Statistics, 2007. Table 1: RECURRENT INCOME. €												
Authority	Population { 2006 Census}	(i) Local Authority contribution	(ii) An Chomhairle Leabharlanna	(iii) Grants		(iv)	(v) TOTAL	(vi) Membership charges	(vii) Overdues & reservation fees	(viii) Other	(ix) TOTAL RECURRENT INCOME	(x) Income per head of resident population
				Department of Education & Science	Other							
County Councils:												
Carlow	50,349	1,187,200	0	27,509	0	27,509	15,810	12,304	8,024		1,250,847	24.84
Cavan	64,003	2,094,164	0	37,281	7,536	44,817	0	12,511	18,408		2,169,900	33.90
Clare	110,950	2,747,838	0	56,378	63,000	119,378	108,710	<	151,557		3,127,483	28.19
Cork	361,877	8,504,793	0	175,156	7,902	183,058	201,210	5,311	78,935		8,973,307	24.80
Donegal	147,264	3,370,585	22,000	81,170	54,776	157,946	0	96,447	130		3,625,108	24.62
Dún Laoghaire - Rathdown	194,038	5,118,080	0	73,861	3,248	77,109	0	138,604	5,241		5,339,034	27.52
Fingal	239,992	7,559,230	81,927	119,432	0	201,359	0	190,592	1,359		7,952,540	33.14
Galway	231,670	3,949,428	70,444	114,017	0	184,461	42,855	31,617	33,379		4,241,740	18.31
Kerry	139,835	4,015,860	0	68,000	2,871	70,871	19,033	9,036	15,753		4,130,553	29.54
Kildare	186,335	4,013,962	30,000	106,812	0	136,812	143,236	0	0		4,294,010	23.04
Kilkenny	87,558	1,870,175	12,698	44,414	0	57,112	78,349	0	18,491		2,024,127	23.12
Laois	67,059	1,459,772	0	35,166	0	35,166	60,918	407	76,938		1,633,201	24.35
Leitrim	28,950	1,314,703	0	14,568	0	14,568	34,537	<	0		1,363,808	47.11
Limerick	131,516	2,953,446	0	63,172	45,678	108,850	0	0	0		3,062,296	23.28
Longford	34,391	759,478	0	18,708	20,000	38,708	6,508	10,996	3,883		819,573	23.83
Louth	111,267	2,080,100	0	64,713	0	64,713	27,569	41,171	0		2,213,553	19.89
Mayo	123,839	3,259,580	0	69,450	20,500	89,950	44,012	31,458	0		3,425,000	27.66
Meath	162,831	2,514,501	0	90,766	20,000	110,766	0	54,377	4,837		2,684,481	16.49
Monaghan	55,997	1,499,790	0	29,276	459	29,735	7,221	2,823	8,470		1,548,039	27.65
Offaly	70,868	1,402,010	0	41,756	0	41,756	23,791	7,776	77,796		1,553,129	21.92
Roscommon	58,768	1,820,000	0	29,692	262,898	292,590	17,823	3,487	3,734		2,137,634	36.37
Sligo	60,894	1,200,500	36,013	30,641	0	66,654	0	16,910	800		1,284,864	21.10
South Dublin	246,935	6,952,505	138,347	129,448	0	267,795	0	121,760	48,315		7,390,375	29.93
Tipperary JLC	149,244	2,799,466	10,793	70,059	32,156	113,008	39,838	15,700	252,397		3,220,409	21.58
Waterford	62,213	1,474,798	0	31,419	0	31,419	15,661	10,554	12,591		1,545,023	24.83
Westmeath	79,346	1,856,437	0	45,069	0	45,069	24,752	26,358	41,621		1,994,237	25.13
Wexford	131,749	2,300,623	0	73,468	8,002	81,470	0	31,927	46,236		2,460,256	18.67
Wicklow	126,194	2,810,390	0	65,960	20,044	86,004	0	56,998	4,038		2,957,430	23.44
Total: 28	3,515,932	82,889,414	402,222	1,807,361	569,070	2,778,653	911,833	929,124	912,933		88,421,957	25.15
City Councils:												
Cork	119,418	4,315,325	70,000	64,546	431,413	565,959	115,660	21,425	106,152		5,124,521	42.91
Dublin	506,211	21,111,888	241,345	197,406	155,242	593,993	0	244,554	394,543		22,344,978	44.14
Limerick	52,539	1,544,704	88,663	30,438	15,000	134,101	9,120	3,717	10,421		1,702,063	32.40
Waterford	45,748	1,447,067	32,000	26,889	2,950	61,839	69,160	19,432	8,938		1,606,436	35.11
Total: 4	723,916	28,418,984	432,008	319,279	604,605	1,355,892	193,940	289,128	520,054		30,777,998	42.52
TOTAL: 32	4,239,848	111,308,398	834,230	2,126,640	1,173,675	4,134,545	1,105,773	1,218,252	1,432,987		119,199,955	28.11

Public Library Statistics, 2007: Table 1.1 : CAPITAL INCOME							€
Authority	Acquisitions	Automation	Buildings	Vehicles	Other	TOTAL	
County Councils:							
Carlow	0	0	0	0	0	0	0
Cavan	0	0	366,192	0	157,339	523,531	
Clare	0	0	699,912	0	0	699,912	
Cork	0	0	0	0	0	0	0
Donegal	0	0	312,187	0	0	312,187	
Dún Laoghaire - Rathdown	0	0	7,560	0	0	7,560	
Fingal	96,106	0	1,101,101	0	21,789	1,218,996	
Galway	0	0	90,599	0	0	90,599	
Kerry	36,289	0	530,000	0	0	566,289	
Kildare	0	0	130,000	20,893	180,611	331,504	
Kilkenny	0	40,712	150,000	93,790	0	284,502	
Laois	48,696	0	712,083	0	0	760,779	
Leitrim	0	0	0	0	0	0	0
Limerick	0	0	2,485,029	0	0	2,485,029	
Longford	0	0	0	0	0	0	0
Louth	0	0	0	0	0	0	0
Mayo	0	0	1,584,915	0	0	1,584,915	
Meath	0	0	35,000	0	0	35,000	
Monaghan	0	0	3,193,030	0	0	3,193,030	
Offaly	63,486	0	0	0	0	63,486	
Roscommon	50,000	20,000	0	165,000	10,000	245,000	
Sligo	0	0	0	0	0	0	0
South Dublin	0	0	0	0	0	0	0
Tipperary JLC	0	0	350,676	0	0	350,676	
Waterford	0	0	0	0	0	0	0
Westmeath	0	0	0	0	0	0	0
Wexford	50,000	0	900,000	0	0	950,000	
Wicklow	142,479	0	158,000	0	35,321	335,800	
Total: 28	487,056	60,712	12,806,284	279,683	405,060	14,038,795	
City Councils:							
Cork	0	0	3,314,204	0	8,889	3,323,093	
Dublin	0	0	0	0	0	0	0
Limerick	0	0	1,077,583	0	0	1,077,583	
Waterford	0	0	0	0	12,500	12,500	
Total: 4	0	0	4,391,787	0	21,389	4,413,176	
TOTAL:32	487,056	60,712	17,198,071	279,683	426,449	18,451,971	

Public Library Statistics, 2007. Table 1.2: DEPARTMENT OF THE ENVIRONMENT, HERITAGE & LOCAL GOVERNMENT CAPITAL GRANT ALLOCATIONS							€
Authority	Acquisitions	Automation	Buildings	Vehicles	Other	TOTAL	
County Councils:							
Carlow	0	0	0	0	0	0	
Cavan	0	0	0	0	0	0	
Clare	0	0	781,912	0	0	781,912	
Cork	0	0	397,201	0	0	397,201	
Donegal	0	0	0	0	2,491	2,491	
Dún Laoghaire-Rathdown	0	0	0	0	0	0	
Fingal	0	0	1,197,208	0	0	1,197,208	
Galway	0	0	0	0	0	0	
Kerry	0	0	661,289	0	0	661,289	
Kildare	0	0	0	201,504	0	201,504	
Kilkenny	0	0	0	93,790	30,000	123,790	
Laois	0	0	730,037	34,305	0	764,342	
Leitrim	0	0	0	0	0	0	
Limerick	0	0	1,442,197	0	0	1,442,197	
Longford	0	0	0	0	0	0	
Louth	0	0	0	0	0	0	
Mayo	0	0	1,584,915	0	0	1,584,915	
Meath	0	0	0	0	0	0	
Monaghan	0	0	2,181,813	0	0	2,181,813	
Offaly	0	0	1,625,463	0	0	1,625,463	
Roscommon	0	0	0	232,099	0	232,099	
Sligo	0	0	0	0	0	0	
South Dublin	0	0	0	0	0	0	
Tipperary JLC	0	0	350,676	0	0	350,676	
Waterford	0	0	0	0	0	0	
Westmeath	0	0	244,627	0	0	244,627	
Wexford	0	0	900,000	0	0	900,000	
Wicklow	0	0	322,493	0	0	322,493	
Total: 28	0	0	12,419,831	561,698	32,491	13,014,020	
City Councils:							
Cork	0	0	1,368,256	0	0	1,368,256	
Dublin	0	0	0	0	0	0	
Limerick	0	0	1,103,490	0	0	1,103,490	
Waterford	0	0	284,514	0	0	284,514	
Total: 4	0	0	2,756,260	0	0	2,756,260	
TOTAL: 32	0	0	15,176,091	561,698	32,491	15,770,280	

Public Library Statistics, 2007. Table 2: RECURRENT EXPENDITURE - Salaries and stock.														
		(i)	(ii)	(iii)	(iv)	(v)	(vi)	(vii)	(viii)	(ix)	(x)	(xi)		
Authority	Population (2006 Census)	Salaries	ACQUISITIONS					TOTAL	BINDING					
			Books			Multimedia	Serials		Other	€ spent on acquisitions per head of resident population				
			Adults	Children's	Primary School Library Grant Scheme					incl. schools grant	excl. schools grant			
County Councils:														
Carlow	50,349	662,782	92,728	in col. ii	26,929	4,256	9,586	0	133,499	2.65	2.12	1,220		
Cavan	64,003	1,113,252	64,877	57,476	40,711	5,736	16,227	678	185,705	2.90	2.27	1,041		
Clare	110,950	2,154,105	171,930	95,557	54,100	18,487	13,636	0	353,710	3.19	2.70	1,142		
Cork	361,877	2,588,452	534,433	286,988	247,693	217,529	74,793	26,449	1,387,885	3.84	3.15	2,851		
Donegal	147,264	2,032,846	228,666	66,115	59,152	43,710	43,360	0	441,003	2.99	2.59	0		
Dun Laoghaire - Rathdown	194,038	3,442,422	333,364	100,000	76,490	208,823	76,077	0	794,754	4.10	3.70	29,842		
Fingal	239,992	5,663,641	634,041	172,223	184,432	256,543	148,656	0	1,395,895	5.82	5.05	0		
Galway	231,670	2,634,874	300,000	138,834	116,209	22,891	35,872	0	613,806	2.65	2.15	3,642		
Kerry	139,835	2,054,500	205,631	89,832	68,000	51,806	20,235	28,208	463,712	3.32	2.83	4,287		
Kildare	186,335	2,666,919	265,653	110,789	106,994	77,239	16,319	0	576,994	3.10	2.52	0		
Kilkenny	87,558	1,351,420	140,211	39,303	34,051	13,253	19,133	in col. ii	249,624	2.85	2.46	0		
Laois	67,059	972,459	318,879	in col. ii	21,662	in col. ii	in col. ii	in col. ii	340,541	5.08	4.76	0		
Leitrim	28,950	807,073	98,793	in col. ii	16,244	in col. ii	in col. ii	in col. ii	115,037	3.97	3.41	0		
Limerick	131,516	2,025,732	240,468	64,575	75,077	82,856	16,542	4,971	484,489	3.68	3.11	0		
Longford	34,391	822,235	57,048	16,997	20,969	9,150	2,438	0	106,602	3.10	2.49	0		
Louth	111,267	1,298,011	145,043	89,769	47,496	47,496	9,158	0	291,466	2.62	2.62	4,537		
Mayo	123,839	2,318,723	213,637	208,647	69,450	45,895	11,821	0	549,450	4.44	3.88	0		
Meath	162,831	1,650,478	241,468	in col. ii	101,556	12,968	11,896	in col. ii	367,888	2.26	1.64	in col. viii		
Monaghan	55,997	867,929	96,776	40,653		61,996	6,727	599	206,751	3.69	3.69	0		
Offaly	70,868	1,051,925	122,923	in col. ii	44,381	49,890	8,074	0	225,268	3.18	2.55	4,633		
Roscommon	58,768	1,098,000	195,000	58,000	29,000	25,000	18,000	15,000	340,000	5.79	5.29	8,000		
Sligo	60,894	822,827	108,739	22,519	30,024	10,829	13,362	5,692	191,165	3.14	2.65	1,143		
South Dublin	246,935	3,918,320	885,552	in col. ii	129,448	in col. ii	50,000	0	1,065,000	4.31	3.79	0		
Tipperary JLC	149,244	2,073,067	263,209	70,059					333,268	2.23	2.23	0		
Waterford	62,213	1,091,194	54,144	30,606	31,419	11,539	5,588	0	133,296	2.14	1.64	345		
Westmeath	79,346	1,260,983	163,317	in col. ii	44,932	**	**	53,423	261,672	3.30	2.73	0		
Wexford	131,749	1,105,670	185,124	125,101	57,456	49,243	4,821	0	421,745	3.20	2.77	3,281		
Wicklow	126,194	1,847,339	181,573	96,149	59,702	46,681	18,513	22,631	425,249	3.37	2.90	0		
Total: 28	3,515,932	51,397,178	6,543,227	1,980,192	1,746,081	1,373,816	650,834	161,324	12,455,474	3.54	3.05	65,964		
City Councils:														
Cork	119,418	3,670,552	233,564	69,988	64,481	83,389	33,000	0	484,422	4.06	3.52	15,000		
Dublin	506,211	14,052,727	1,145,296	265,989	212,441	379,995	236,013	192,488	2,432,222	4.80	4.39	40,963		
Limerick	52,539	1,016,049	94,899	35,452	30,684	5,030	3,977	3,545	173,587	3.30	2.72	2,515		
Waterford	45,748	1,015,212	139,950	31,064	30,366	51,491	14,187	3,691	270,749	5.92	5.25	0		
Total: 4	723,916	19,754,540	1,613,709	402,493	337,972	519,905	287,177	199,724	3,360,980	4.64	4.18	58,478		
TOTAL: 32	4,239,848	71,151,718	8,156,936	2,382,685	2,084,053	1,893,721	938,011	361,048	15,816,454	3.73	3.24	124,442		

Public Library Statistics, 2007. Table 2.1: RECURRENT EXPENDITURE - Premises, Travel, etc..												
Authority	(xii)	(xiii)	(xiv)	(xv)	(xvi)	(xvii)	(xviii)	(xix)	(xx)	(xxi)	(xxii)	(xxiii)
	PREMISES		TOTAL	Transport	Travel & Subsistence	TOTAL	Library computing costs	Leasing & loan repayments	Contribution to An Chomhairle Leabharlanna	Other	TOTAL RECURRENT EXPENDITURE	Expenditure per head of resident population
	HQ	Branches										
County Councils:												
Carlow	81,566	9,143	90,709	5,522	6,709	12,231	30,935	0	16,344	40,983	988,703	19.64
Cavan	42,978	209,857	252,835	3,938	16,737	20,675	19,483	352,298	20,085	204,526	2,169,900	33.90
Clare	30,323	187,031	217,354	3,896	54,575	58,471	138,778	0	36,685	167,237	3,127,482	28.19
Cork	68,206	2,997,849	3,066,055	355,566	202,980	558,546	109,614	0	115,359	1,144,545	8,973,307	24.80
Donegal	117,299	283,917	401,216	12,492	39,908	52,400	34,316	0	48,867	614,460	3,625,108	24.62
Dun Laoghaire - Rathdo	59,221	534,569	593,790	30,359	12,092	42,451	113,716	0	68,126	266,486	5,351,587	27.58
Fingal	0	342,451	342,451	31,578	41,791	73,369	72,585	140,000	69,767	194,832	7,952,540	33.14
Galway	104,093	581,782	685,875	42,694	42,182	84,876	6,445	0	50,881	161,341	4,241,740	18.31
Kerry	103,703	136,031	239,734	92,104	14,035	106,139	65,601	155,601	43,000	883,285	4,015,859	28.72
Kildare	143,317	288,727	432,044	25,000	49,259	74,259	138,388	220,000	58,233	127,173	4,294,010	23.04
Kilkenny	45,851	169,802	215,653	34,782	15,645	50,427	56,300	10,884	30,671	59,148	2,024,127	23.12
Laois	0	112,275	112,275	6,527	11,999	18,526	48,871	60,500	20,877	59,152	1,633,201	24.35
Leitrim	32,618	94,736	127,354	0	31,151	31,151	43,577	63,380	9,164	167,072	1,363,808	47.11
Limerick	23,976	156,468	180,444	13,428	0	13,428	96,196	47,500	43,080	152,945	3,043,814	23.14
Longford	120,000	88,000	208,000	0	11,036	11,036	35,722	0	11,036	0	1,194,631	34.74
Louth	69,139	31,662	100,801	23,140	27,016	50,156	41,474	0	36,167	289,058	2,111,670	18.98
Mayo	300,750	<	300,750	53,876	50,143	104,019	40,341	70,000	41,717	0	3,425,000	27.66
Meath	389,073	<	389,073	22,447	<	22,447	85,031	0	48,325	121,239	2,684,481	16.49
Monaghan	103,846	84,611	188,457	8,953	33,740	42,693	49,606	19,448	18,681	87,775	1,481,340	26.45
Offaly	14,708	27,229	41,937	3,054	16,016	19,070	21,533	0	22,614	166,149	1,553,129	21.92
Roscommon	74,000	61,000	135,000	30,000	28,000	58,000	45,000	0	19,000	117,000	1,820,000	30.97
Sligo	68,724	0	68,724	4,053	22,096	26,149	55,937	0	20,673	85,836	1,272,454	20.90
South Dublin	804,839	<	804,839	42,925	30,937	73,862	200,125	221,700	84,835	275,145	6,643,826	26.91
Tipperary JLC	0	0	0	0	51,763	51,763		272,251		666,744	3,397,093	22.76
Waterford	14,253	44,624	58,877	3,854	20,416	24,270	50,391	46,826	20,230	119,595	1,545,024	24.83
Westmeath	41,089	272,915	314,004	10,000	12,117	22,117	43,564	0	25,524	66,373	1,994,237	25.13
Wexford	77,207	179,433	256,640	11,389	47,589	58,978	30,350	200,000	41,416	195,765	2,313,845	17.56
Wicklow	231,583	0	231,583	28,243	17,538	45,781	69,860	108,000	40,734	188,884	2,957,430	23.44
Total: 28	3,162,362	6,894,112	10,056,474	899,820	907,470	1,807,290	1,743,739	1,988,388	1,062,091	6,622,748	87,199,346	24.80
City Councils:												
Cork	94,847	406658	501,505	28,800	1,500	30,300	103,472	0	43,712	275,558	5,124,521	42.91
Dublin	412,971	4,194,361	4,607,332	25,167	40,446	65,613	721,819	0	176,104	248,197	22,344,977	44.14
Limerick	315,753	117,452	433,205	1,878	3,711	5,589	26,690	0	19,189	26,238	1,703,062	32.42
Waterford	278,582	0	278,582	3,408	5,023	8,431	17,622	0	15,840	0	1,606,436	35.11
Total: 4	1,102,153	4,718,471	5,820,624	59,253	50,680	109,933	869,603	0	254,845	549,993	30,778,996	42.52
TOTAL: 32	4,264,515	11,612,583	15,877,098	959,073	958,150	1,917,223	2,613,342	1,988,388	1,316,936	7,172,741	117,978,342	27.83

Public library statistics, 2007. Table 2.2: CAPITAL EXPENDITURE						
Authority	Acquisitions	Automation	Buildings	Vehicles	Other	TOTAL
County Councils:						
Carlow	0	0	0	0	0	0
Cavan	0	0	565,706	0	236,605	802,311
Clare	0	0	1,170,209	0	0	1,170,209
Cork	0	0	130,000	0	0	130,000
Donegal	0	0	0	0	0	0
Dun Laoghaire - Rathdown	0	0	26,727	0	0	26,727
Fingal	552,412	0	1,918,650	230,322	67,137	2,768,521
Galway	0	0	49,681	0	0	49,681
Kerry	72,579	0	706,667	0	0	779,246
Kildare	0	0	130,000	23,192	180,611	333,803
Kilkenny	0	0	0	0	0	0
Laois	48,696	0	1,832,666	0	203,511	2,084,873
Leitrim	0	0	0	0	0	0
Limerick	0	0	0	0	0	0
Longford	0	0	0	0	0	0
Louth	0	0	0	0	0	0
Mayo	0	0	1,042,476	0	0	1,042,476
Meath	0	0	745,408	0	0	745,408
Monaghan	0	0	4,062,742	92,498	0	4,155,240
Offaly	37,358	243	0	0	926	38,527
Roscommon	50,000	20,000	0	165,000	10,000	245,000
Sligo	0	0	0	0	0	0
South Dublin	0	0	2,002,167	0	0	2,002,167
Tipperary JLC	0	0	98,489	0	0	98,489
Waterford	0	0	0	0	0	0
Westmeath	0	0	0	0	0	0
Wexford	100,000	0	1,200,000			1,300,000
Wicklow	284,957	0	210,667	0	9,761	505,385
Total: 28	1,146,002	20,243	15,892,255	511,012	708,551	18,278,063
City Councils:						
Cork	151,904	0	523,213	0	1,337	676,454
Dublin	0	0	0	0	0	0
Limerick	17,616	93,259	401,093	0	3,449	515,417
Waterford	0	55,757	0	0	11,703	67,460
Total: 4	169,520	149,016	924,306	0	16,489	1,259,331
TOTAL:32	1,315,522	169,259	16,816,561	511,012	725,040	19,537,394

Public Library Statistics, 2007. Table 3: STAFFING (continued over).

Authority	Chief Librarian	Senior Executive Librarians	Executive Librarians			Assistant Librarians			Grade V: Staff Officers	Grade IV: Assistant Staff Officers	Senior Library Assistants		
			HQ	Branch	Other	HQ	Branch	Other			HQ	Branch	Other
County Councils:													
Carlow	1	1	1	1	0	0	1	0	1		0	2.6	0
Cavan	1	0	1	0	0	1	1	0	1	0	1	4	0
Clare	1	3	3	2	1	0	2	0	9	0	1	7	1
Cork	1	5	8	3	0	4	4	1	12	0	7	19.5	0
Donegal	1	0	0	0	0	1	2	1	0	0	2	8	1
Dún Laoghaire - Rathdown	see Table 3.1												
Fingal	see Table 3.2												
Galway	1	3	2	4	0	0	1	0	7		3	9	0
Kerry	1	0	3	0	0	1.6	2	0	3	0	3.5	6.6	0
Kildare	1	2	3	2	1	0	2	2	5	0	0	12.5	0
Kilkenny	1	1	2	0	0	1	0	0	3	0	1	2	2
Laos	1	1	1	1	0	1	2	1	2	0	1	4	0
Leitrim	1	0	1	0	0	0	1	0	0	1	0	2	1
Limerick	1	2	3	3	0	1	2	0	3	1	3	2	0
Longford	1	2	0	0	0	1	0	0	2	0	2	1	0
Louth	1	1	1	2	0	0	1	0	4	0	2	1	1
Mayo	1	2	1	2	0	1	4	0	3	0	1	5	0
Meath	1	2	3	4	0	0	1	0	5	0	2	3	0
Monaghan	1	1	1	0	0	0	1	0	3	0	0	2.1	0
Offaly	1	1	1	2	0	0	1	0	3	1	1	2	0
Roscommon	1	0	0	0	0	3	0	0	0	0	1	3	0
Sligo	1	1	1	3	0	0	1	0	2	1	0	4	0
South Dublin	see Table 3.3												
Tipperary JLC*	1	2	1	3	0	0	2	0	8		1	8	0
Waterford	1	1	1	2	0	1.6	2.5	0	0	0	2	3	0
Westmeath	1	2	0	1	0	0	1	0	2	0	2	3	0
Wexford	1	0	2	1	0	2	2	0	0	0	0	3	1
Wicklow	1	2	1	3	0	0	3	0	4	0	1	4	0
Total: 28	25	35	41	39	2	19.2	39.5	5	82	4	37.5	121.3	7
City Councils:													
Cork	1	3	6	6	0	0	1	0	10	0	6	7	0
Dublin	see Table 3.4												
Limerick	1	1	3	1	0	3	2	0	1	1	1	0	0
Waterford	1	2	1	2	0	1	1	0	3	0	0	5	0
Total: 4	3	6	10	9	0	4	4	0	14	1	7	12	0
TOTAL: 32	28	41	51	48	2	23.2	43.5	5	96	5	44.5	133.3	7



Public Library Statistics, 2007. Table 3 (continued) : STAFFING.												
Authority	Library Assistants			Branch Assistants	Branch Librarians	Clerical Officers	Driver Assistants	Van Drivers	Support Staff	TOTALS		
	HQ	Branch	Other							Professional	Para-professional	Support Staff
Carlow	0	3	0	0	2.4	0	1	0	0	5	10	0
Cavan	1	4	0	0	8.1	2	1	0	0	4	22.1	0
Clare	0.5	4	0	0	7.15	0	0	1	8.75	12	29.65	9.75
Cork	9	13	1	0	22	1.5	3	5	1	26	88	6
Donegal	4	19	0	0	3	0	2	0	0	5	39	0
Dún Laoghaire - Rathdown										28	51	12
Fingal										36	96.5	27
Galway	1	3	0	0	18	2	3	0	3	11	46	3
Kerry	4	5.3	0	0	8	1	3	0	2	7.6	34.4	2
Kildare	0	12.5	0	0	8.55	3.5	2	0	7.78	13	44.05	7.78
Kilkenny	2	4	0	0	6	0	0	2	4	5	20	6
Laois	3.5	0	1	0	3.8	1.5	1	0.65	0	8	17.8	0.65
Leitrim	1	1	1	0	6	0	0	0	0	3	13	0
Limerick	1	2	0	1	13	2	2	0	2	12	30	2
Longford	2	2	0	0	5	2	0	0	0	4	16	0
Louth	1	9	2	0	3	1	2	0	2	6	26	2
Mayo	1	10	0	0	13	2	0	0	2	11	35	2
Meath	1	12	0	0	5	2	1	0	1	11	31	1
Monaghan	3	4.8	0	0	3	0	2	0	1.5	4	17.9	1.5
Offaly	0	2	0	0	4	1	1	0	2	6	15	2
Roscommon	1	5	0	0	4	1	2	0	1.5	4	17	1.5
Sligo	0	3	0	0	1.5	0	0	1	1	7	11.5	2
South Dublin										28	53	20
Tipperary JLC*	0	7	0	0	11	1	2	0	7	9	38	7
Waterford	1.6	4	0	0	2.1	0	1	0	2.5	9.1	13.7	2.5
Westmeath	2	7	0	0	7	1	1	0	1	5	25	1
Wexford	1	4	2	0	3	2	2	0.5	1.25	8	18	1.75
Wicklow	1	2	0	0	12.57	1	2	0	1.8	10	27.57	1.8
<b>Total: 28</b>	<b>41.6</b>	<b>142.6</b>	<b>7</b>	<b>1</b>	<b>180.17</b>	<b>27.5</b>	<b>34</b>	<b>10.15</b>	<b>53.08</b>	<b>297.7</b>	<b>886.17</b>	<b>122.23</b>
Cork	15	7	0	0	0	4	0	1	11	17	49.00	12.00
Dublin										101	168.00	80.00
Limerick	3	2	0	0	2	0	1	0	4	11	11.00	4.00
Waterford	1	6	0	0	0	1	0	0	1	8	16.00	1.00
<b>Total: 4</b>	<b>19</b>	<b>15</b>	<b>0</b>	<b>0</b>	<b>2</b>	<b>5</b>	<b>1</b>	<b>1</b>	<b>16</b>	<b>137</b>	<b>244.00</b>	<b>97.00</b>
<b>TOTAL: 32</b>	<b>60.6</b>	<b>157.6</b>	<b>7</b>	<b>1</b>	<b>182.17</b>	<b>32.5</b>	<b>35</b>	<b>11.15</b>	<b>69.08</b>	<b>434.7</b>	<b>1,130.17</b>	<b>219.23</b>

Table 3.1: STAFFING, 2007 - DÚN LAOGHAIRE-RATHDOWN				
Grade	HQ	Branches / mobiles	TOTAL	
County Librarian	1		1	
Divisional Librarians	4	0	4	
Senior Librarians	4	8	12	
Librarians	2	9	11	
Staff Officers	4	6	10	
Senior Library Assistants	1	10	11	
Library Assistants	9	18	27	
Branch Librarians	1	0	1	
Clerical Officers	2	0	2	
Driver / Assistants	0	0	0	
Van Drivers	2	0	2	
Other Grades	2	8	10	
TOTALS	32	59	91	

Table 3.2: STAFFING, 2007 - FINGAL				
Grade	HQ	Branches / mobiles	TOTAL	
County Librarian	1		1	
Divisional Librarians	2	2	4	
Senior Librarians	2	8.4	10.4	
Librarians	3.4	15.6	19	
Staff Officers	2.7	8.6	11.3	
Senior Library Assistants	0	22	22	
Library Assistants	10	40.8	50.8	
Branch Assistants	0	1	1	
Branch Librarians	0	0	0	
Clerical Officers	1	0.5	1.5	
Driver Assistants	0	0	0	
Van Drivers	1	4	5	
Other Grades	0	21	22	
TOTALS	23.1	123.9	148.00	

Figures reflect number of posts filled and not the full staff complement which is as given on Table 3: Professional 36; Para-professional 96.5; Support staff 27; Total 159.5.

Table 3.3: STAFFING, 2007 - SOUTH DUBLIN				
Grade	HQ	Branches / mobiles	TOTAL	
County Librarian	1		1	
Divisional Librarians	3	1	4	
Senior Librarians	5	7	12	
Librarians	2	9	11	
Senior Library Assistants	1	13	14	
Grade V: Staff Officers	3	7	10	
Library Assistants	8	19	27	
Branch Librarians	0	1	1	
Clerical Officers	1	0	0	
Driver Assistants	0	0		
Van Drivers	1	4	5	
Other Grades	1	14	15	
TOTALS	26	75	100	

Figures reflect number of posts filled and not the full staff complement which is as given on Table 3: Professional 28; Para-professional 53; Support staff 20; Total 101.

Table 3.4: STAFFING, 2007 - DUBLIN CITY.				
Grade	HQ	Branches / mobiles	TOTAL	
City Librarian	1		1	
Deputy City Librarian	1		1	
Divisional Librarians	9	2	11	
Senior Librarians	10.5	17	27.5	
Librarians	8	33	41	
Grade V: Staff Officers	7	6.5	13.5	
Senior Library Assistants	3	36	39	
Library Assistants	3.5	79	82.5	
Branch Assistants	0	0	0	
Clerical Officers	8	1	9	
Drivers Assistants		3	3	
Van Drivers	3		3	
Other Grades	9	64	73	
TOTALS	63	241.5	304.5	

Figures reflect number of posts filled and not the full staff complement which is as given on Table 3: Professional 101; Para-professional 168; Support staff 80; Total 349.



Public Library Statistics, 2007. Table 4: COLLECTIONS - BOOKS & SERIALS.													
Authority	(i)	(ii)	(iii)	(iv)	(v)	(vi)	(vii)	(viii)	(ix)	(x)	(xi)	(xii)	(Nos.)
	BOOKS IN STOCK						SERIAL SUBSCRIP- TIONS	BOOKS ADDED TO STOCK, 2007					TOTAL
	Adult non-fiction	Adult fiction	Children's	Schools	TOTAL	per head of resident population		Adult non-fiction	Adult fiction	Children's	Schools	TOTAL	
County Councils:													
Carlow	43,660	27,929	35,799	11,703	119,091	2.4	80	1,493	1,781	1,687	2,411	7,372	3,087
Cavan	55,705	38,890	86,395	34,197	215,187	3.4	103	3,147	1,895	6,734	5,515	17,291	14,692
Clare	105,419	84,666	106,736	**	296,821	2.7	**	4,623	6,627	16,375	**	27,625	35,646
Cork	255,477	354,972	292,537	58,570	961,556	2.7	394	11,353	24,345	32,736	26,783	95,217	81,441
Donegal	96,817	67,008	108,275	108,339	380,439	2.6	174	7,942	5,850	8,925	6,986	29,703	3,660
Dún Laoghaire - Rathdown	151,671	58,337	102,682	132,888	445,578	2.3	110	10,675	9,231	15,951	8,165	44,022	5,003
Fingal	206,837	98,006	165,154	30,836	500,833	2.1	290	20,668	12,949	35,276	29,561	98,454	75,613
Galway	146,619	160,028	216,406	133,054	656,107	2.8	50	7,436	9,959	23,225	13,377	53,997	39,889
Kerry	100,324	51,284	78,441	48,906	278,955	2.0	22	22,021			9,247	31,268	31,880
Kildare	77,600	73,697	114,696	42,919	308,912	1.7	**	8,364	9,776	30,587	0	48,727	21,293
Kilkenny	109,049	89,222	132,181	<	330,452	3.8	150	>	>	>	>	29,920	22,549
Laois	62,744	46,697	85,545	64,441	259,427	3.9	15	4,896	4,881	8,967	3,634	22,378	6,294
Leitrim	36,340	31,463	51,092	<	118,895	4.1		1,529	2,186	2,728		6,443	4,461
Limerick	46,281	56,024	228,653	0	330,958	2.5	**	6,382	9,312	20,543	0	36,237	39,650
Longford	38,307	37,117	60,109	46,643	182,176	5.3	**	1,703	2,724	3,278	3,083	10,788	3,515
Louth	76,794	57,927	63,122	64,920	262,763	2.4	25	4,052	4,564	9,983	<	18,599	3,992
Mayo	121,311	114,529	196,287	159,392	591,519	4.8	20	10,892	11,412	21,013	6,976	50,293	33,507
Meath	130,875	82,755	150,806	112,467	476,903	2.9	**	5,372	5,286	7,397	10,401	28,456	20,277
Monaghan	67,169	35,639	76,734	22,920	202,462	3.6	**	4,059	4,049	9,747	1,936	19,791	7,682
Offaly	49,814	50,957	75,491	63,794	240,056	3.4	30	4,288	4,633	4,392	6,178	19,491	19,079
Roscommon	98,731	62,378	113,850	0	274,959	4.7	51	6,204	6,192	10,236	0	22,632	14,867
Sligo	43,277	69,225	36,074	23,224	171,800	2.8	157	3,702	4,361	5,901	3,141	17,105	7,047
South Dublin	261,337	114,230	221,131	180,944	777,642	3.1	135	58,396	11,008	10,091	18,652	98,147	23,989
Tipperary JLC*	400,000	<	<	<	400,000	2.7	**	**	**	**	**	**	**
Waterford	32,270	21,336	36,966	54,170	144,742	2.3	15	2,698	2,170	5,183	8,010	18,061	6,437
Westmeath	89,006	40,668	71,042	58,725	259,441	3.3	**	2,769	2,877	4,001	5,298	14,945	7,397
Wexford	125,463	106,493	77,670	255,632	565,258	4.3	25	6,654	6,352	21,662	5,099	39,767	4,179
Wicklow	84,609	56,696	73,302	50,779	265,386	2.1	76	4,866	5,392	10,251	6,599	27,108	18,542
Total: 28	3,113,506	2,088,173	3,057,176	1,759,463	10,018,318	2.8	1,922	226,184	169,812	326,869	181,052	933,837	555,668
City Councils:													
Cork	140,132	86,351	102,676	139,370	468,529	3.9	225	9,998	7,853	15,103	11,197	44,151	44,952
Dublin	858,622	232,035	267,913	289,872	1,648,442	3.3	592	32,892	30,134	43,971	27,315	134,312	87,608
Limerick	75,305	44,596	84,498	107,239	311,638	5.9	44	2,836	3,962	7,565	3,519	17,882	2,502
Waterford	60,180	33,149	42,055	0	135,384	3.0	139	4,935	4,725	2,216	0	11,876	13,776
Total: 4	1,134,239	396,131	497,142	536,481	2,563,993	3.5	1,000	50,661	46,674	68,855	42,031	208,221	148,838
TOTAL: 32	4,247,745	2,484,304	3,554,318	2,295,944	12,582,311	3.0	2,922	276,845	216,486	395,724	223,083	1,142,058	704,506

Tipperary Libraries: Stock estimate as supplied by TL

Public Library Statistics, 2007. Table 4.1: COLLECTIONS - MULTIMEDIA ITEMS												
	(i)	(ii)	(iii)	(iv)	(v)	(vi)	(viii)	(ix)	(x)	(xi)	(xii)	Nos. (xiii)
Authority	MULTIMEDIA ITEMS IN STOCK											
	Sound recordings		Spoken word	Talking books	Micro-film sets	DVDs/Videos/ Films	Computer software	Photo-graphic	Maps	Art	Other formats	TOTAL
	Discs	Tapes										
County Councils:												
Carlow	2,655	0	0	3,215	50	1,002	44	0	0	0	285	7,251
Cavan	0	**	0	4,182	401	857	414	**	**	0	0	5,854
Clare	6,383	0	0	1,032	1,993	1863	0	11,127	368	0	0	22,766
Cork	0	0	0	18,645	0	2,438	0	0	0	0	614	21,697
Donegal	7,816	15	0	4,803	3,028	8,149	276	312	986	0	1,239	26,624
Dún Laoghaire - Rathdown	24,899	1,408	0	2,377	0	3,370	0	0	31	0	3,414	35,499
Fingal	21,503	3,064	0	10,178	0	12,143	1,450	0	344	1,468	3,027	53,177
Galway	0	0	0	13,297	0	0	0	0	0	0	0	13,297
Kerry	723	0	0	5,036	0	579	0	250,000	530	0	0	256,868
Kildare	6,229	0	115	6,580	0	5,335	704	0	0	0	2,467	21,430
Kilkenny	Counted with books, Table 4											
Laois	3,959	669	261	5,747	0	1,579	153	420	121	0	0	12,909
Leitrim	1,567	416	0	560	0	1,694	0	0	0	0	0	4,237
Limerick	0	0	0	0	0	0	0	0	0	0	0	0
Longford	778	306	255	1,128	0	0	0	0	0	0	0	2,467
Louth	4,121	0	7116	0	0	4,892	40	0	0	0	0	16,169
Mayo	3,984	2,572	0	0	652	3,800	330	1,133	92	700	0	13,263
Meath	**	**	**	**	**	**	**	**	**	**	**	**
Monaghan	3,634	1,076	0	2,561	498	2,608	67	420	130	0	0	10,994
Offaly	8	0	15	2,316	665	2,259	790	7,696	506	0	75	14,330
Roscommon	16,048	<	<	<	<	<	<	<	<	<	<	16,048
Sligo	580	1,371	0	0	412	256	77	0	567	0	0	3,263
South Dublin	22,627	8,142	0	11,378	10	14,839	5,430	0	121	1,965	4,791	69,303
Tipperary JLC	**	**	**	**	**	**	**	**	**	**	**	**
Waterford	3,145	281	0	1,148	21	684	68	60	301	0	22	5,730
Westmeath	2,207	110	534	4,275	811	910	501	2,575	550	0	0	12,473
Wexford	5,199	42	2,031	1,234	286	0	0	4,000	50	0	69	12,911
Wicklow	4,710	706	0	4,073	0	1,115	1,035	240	3	0	0	11,882
Total: 28	142,775	20,178	10,327	103,765	8,827	70,372	11,379	277,983	4,700	3,433	16,703	670,442
City Councils:												
Cork	33,333	7,711	0	21,979	3,938	5,320	**	0	307	0	418	73,006
Dublin	18,377	7,874	10,974	24,181	315	10,099	4,451	194	278	513	6,725	83,981
Limerick	7,221	1,924	0	5,874	734	882	178	0	0	0	0	16,813
Waterford	9,128	544	795	2,992	2,086	4,670	4	0	281	0	1,554	22,054
Total: 4	68,059	18,053	11,769	55,026	7,073	20,971	4,633	194	866	513	8,697	195,854
Total: 32	210,834	38,231	22,096	158,791	15,900	91,343	16,012	278,177	5,566	3,946	25,400	866,296

Public Library Statistics, 2007. Table 4.2: COLLECTIONS - MULTIMEDIA ITEMS ADDITIONS & WITHDRAWALS															Nos.		Nos.	
		(i)	(ii)	(iii)	(iv)	(v)	(vi)	(viii)	(ix)	(x)	(xi)	(xii)	(xiii)	(xiv)				
Authority		MULTI-MEDIA ITEMS ADDED TO STOCK												TOTAL	TOTAL			
		Sound recordings		Spoken word cassettes	Talking books	Micro-form sets	DVDs/Videos / Films	Computer software	Photo-graphic	Maps	Art	Other						
		Discs	Tapes															
County Councils:																		
Carlow		553	0	0	568	50	739	3	0	0	0	15	1,928	121				
Cavan		0	0	0	413	0	40	0	0	0	0	0	453	155				
Clare		1,070	0	0	42	25	1,049		1,775	7	0		3,968	215				
Cork		0	0	0	3,904	0	897	0	0	0	0	240	5,041	0				
Donegal		602	0	0	294	1	866	78	0	3	0	96	1,940	192				
Dún Laoghaire - Rathdown		0	0	0	0	0	0	0	0	0	0	0	0	0				
Fingal		5,407	796	0	3,739	0	6,572	414	0	0	57	631	17,616	6,811				
Galway		0	0	0	3,501	0	0	0	0	0	0	0	3,501	642				
Kerry		179	0	0	759	0	209	0	50,000	30	0	0	51,177	181				
Kildare		274	0	122	761	0	1,972	72	0	0	0	1,180	4,381	2,020				
Kilkenny		Counted with books, Table 4																
Laois		1,056	0	103	175	0	691	42	0	0	0	0	2,067	644				
Leitrim		0	0	0	0	0	0	0	0	0	0	0	0	20				
Limerick		0	0	0	0	0	0	0	0	0	0	0	0	0				
Longford		160	0	0	207	0	0	0	0	0	0	0	367	0				
Louth		232	0	566	0	0	597	15	0	0	0	0	1,410	259				
Mayo		1,462	5	0	0	25	780	32	38	12	0	0	2,354	958				
Meath		1,555	<	<	<	<	<	<	<	<	<	<	1,555	**				
Monaghan		1,267	0	0	815	28	1,132	0	0	0	0	0	3,242	256				
Offaly		0	0	16	297	0	455	85	166	0		7	1,026	250				
Roscommon		2,238	<	<	<	<	<	<	<	<	<	<	2,238	0				
Sligo		215	7	0	0	0	61	31	0	0	0	0	314	29				
South Dublin		766	91	0	1,772	10	4,057	2,368		121		1,491	10,676	4,918				
Tipperary JLC		**	**	**	**	**	**	**	**	**	**	**	**	**				
Waterford		383	7	0	148	21	455	0	60	0	0	0	1,074	275				
Westmeath		99	0	0	293		237	59	0	0	0	0	688	152				
Wexford		1,121	0	0		161			950	0	0	0	2,232	645				
Wicklow		1,213	0	0	557	0	486	134	0	0	0	0	2,390	156				
Total: 28		19,852	906	807	18,245	321	21,295	3,333	52,989	173	57	3,660	121,638	18,899				
City Councils:																		
Cork		4,095	0	0	1,108	72	1,390	**	0	0	0	0	6,665	1,588				
Dublin		507	0	699	2,093	0	2,296	35	0	1	0	601	6,232	6,643				
Limerick		0	0	0	0	0	0	0	0	0	0	0	0	0				
Waterford		1,180	3	38	199	0	1,124	0	0	0	0	41	2,585	2,160				
Total: 4		5,782	3	737	3,400	72	4,810	35	0	1	0	642	15,482	10,391				
Total: 32		25,634	909	1,544	21,645	393	26,105	3,368	52,989	174	57	4,302	137,120	29,290				

Public Library Statistics, 2007. Table 5: USAGE - ISSUES												
	(i)	(ii)	(iii)	(iv)	(v)	(vi)	(vii)	(viii)	(ix)	(x)	(xi)	(xii)
Authority	BOOK ISSUES			TOTAL	Book issues per head of population			NON-BOOK ISSUES		TOTAL	TOTAL (iv) + (x)	Total issues per head population
	Adult non-fiction	Adult fiction	Children's		Adults (15+)	Children (0-14)	Total resident population	Sound recordings	Other			
County Councils:												
Carlow	42,311	47,197	57,142	146,650	2.3	5.4	2.9	28,125	7,629	35,754	182,404	3.6
Cavan	30,420	39,760	94,411	164,591	1.4	6.6	2.6	0	5,874	5,874	170,465	2.7
Clare	89,223	144,373	182,517	416,113	2.7	7.6	3.8	26,119	<	26,119	442,232	4.0
Cork	259,362	581,531	624,265	1,465,158	3.0	7.9	4.0	35,442	17,441	52,883	1,518,041	4.2
Donegal	132,408	<	143,799	276,207	1.2	4.3	1.9	7,631	9,431	17,062	293,269	2.0
Dún Laoghaire-Rathdown <sup>1</sup>	193,656	282,960	282,066	758,682	3.0	8.0	3.9	136,363	0	136,363	895,045	4.6
Fingal	260,399	237,895	311,168	809,462	2.7	5.9	3.4	25,763	179,800	205,563	1,015,025	4.2
Galway	99,652	181,069	251,822	532,543	1.5	5.5	2.3	16,692	0	16,692	549,235	2.4
Kerry	67,527	106,070	223,969	397,566	1.5	8.2	2.8		8,509	8,509	406,075	2.9
Kildare	79,034	120,490	231,746	431,270	1.4	5.4	2.3	49,757	881	50,638	481,908	2.6
Kilkenny	67,928	100,415	126,995	295,337	2.5	6.7	3.4	26,638	<	26,638	321,975	3.7
Laois	35,172	52,676	74,211	162,059	1.7	4.9	2.4	10,587	9,591	20,178	182,237	2.7
Leitrim	21,973	30,866	54,095	106,934	2.3	9.2	3.7	0	3,067	3,067	110,001	3.8
Limerick	61,923	99,690	153,285	314,898	1.5	5.8	2.4	7,638	0	7,638	322,536	2.5
Longford	23,754	31,987	32,095	87,836	2.1	4.3	2.6	3,721	0	3,721	91,557	2.7
Louth	60,894	95,218	116,834	272,946	1.8	4.8	2.5	7,764	31,731	39,495	312,441	2.8
Mayo	108,879	121,965	249,876	480,720	2.3	9.8	3.9	30,984	15,138	46,122	526,842	4.3
Meath	85,929	85,777	185,675	357,381	1.4	4.9	2.2	61,347	<	61,347	418,728	2.6
Monaghan	34,026	36,924	69,402	140,352	1.6	5.8	2.5	9,048	8,474	17,522	157,874	2.8
Offaly	29,124	56,187	102,190	187,501	1.6	6.4	2.6	3,461	9,975	13,436	200,937	2.8
Roscommon	32,952	51,777	45,783	130,512	1.8	3.8	2.2	8,670	2	8,672	139,184	2.4
Sligo	48,013	73138	72,696	193,847	2.5	6.1	3.2	13,606	<	13,606	207,453	3.4
South Dublin <sup>2</sup>	746,993	<	<	746,993	3.9	**	3.0	203,251	<	203,251	950,244	3.8
Tipperary JLC	72,110	131,012	182,840	385,962	1.7	5.8	2.6	14,511		14,511	400,473	2.7
Waterford	26,626	57,364	113,646	197,636	1.7	8.3	3.2	9,687	3,394	13,081	210,717	3.4
Westmeath	55,166	75,921	127,442	258,529	2.1	7.2	3.3	16,439	<	16,439	274,968	3.5
Wexford	63,800	116,885	170,656	351,341	1.8	5.8	2.7	12,931	0	12,931	364,272	2.8
Wicklow	108,725	151,211	191,343	451,279	2.6	7.1	3.6	31,938	<	31,938	483,217	3.8
Total: 28	2,937,979	3,110,358	4,471,969	10,520,305	2.2	5.9	3.0	798,113	310,937	1,109,050	11,629,355	3.3
City Councils:												
Cork	119,196	242,003	222,740	583,939	3.6	12.3	4.9	188,888	37,663	226,551	810,490	6.8
Dublin	574,667	608,924	437,811	1,621,402	2.8	5.8	3.20	164,632	116,370	281,002	1,902,404	3.8
Limerick	48,831	57,612	82,065	188,508	2.5	8.8	3.6	31,548	0	31,548	220,056	4.2
Waterford	59,152	79,877	72,078	211,107	3.8	8.2	4.6	32,981	53,660	86,641	297,748	6.5
Total: 4	801,846	988,416	814,694	2,604,956	2.9	7.3	3.6	418,049	207,693	625,742	3,230,698	4.5
TOTAL: 32	3,739,825	4,098,774	5,286,663	13,125,261	2.3	6.1	3.1	1,216,162	518,630	1,734,792	14,860,053	3.5

<sup>1</sup>Dún Laoghaire-Rathdown: Adult fiction issues include 76,184 uncategorised web renewals

<sup>2</sup> South Dublin: Central Library was closed for renovation from August 3 2007 until June 2008.

Public Library Statistics, 2007. Table 5.1: USAGE - NUMBER OF REGISTERED MEMBERS & CHARGES												
	(xiii)	(xiv)	(xv)	(xvi)	(xvii)	(xviii)	(xix)	(xx)	(xxi)	(xxii)	(xxiii)	(xxiv)
Authority	ACTIVE MEMBERSHIP			Membership as % of population		Number of loan items		Loan period (no. of weeks)	CHARGES (€)		Children	How often registered
	Adult	Children	TOTAL	Adults (15+)	Children (0-14)	Total resident	Adults		Children	Adults		
County Councils:												
Carlow	4,782	3,608	8,390	12.0	34.1	16.7	6	4	3	10.00	Free	Annually
Cavan	6,859	5,225	12,084	13.8	36.7	18.9	3	3	3	Free	Free	Annually
Clare	10,973	6,724	17,697	12.6	28.0	16.0	8	4	4	5.00	Free	Annually
Cork	31,191	25,648	56,839	11.0	32.5	15.7	6	4	2	2.50	0.50	Annually
Donegal	11,297	6,926	18,223	9.9	20.7	12.4	6	6	3	Free	Free	Annually
Dún Laoghaire-Rathdown	34,051	14,686	48,737	21.4	41.7	25.1	12	12	3	Free	Free	3Y
Fingal	61,941	23,133	85,074	33.1	43.7	35.4	10	6	3	Free	Free	3Y
Galway	20,231	15,435	35,666	10.9	33.5	15.4	4	3	3	5.00	Free	Annually
Kerry	10,990	7,873	18,863	9.8	28.9	13.5	6	6	3	12.00p.a. + 0.30 PI	Free	3Y
Kildare	11,376	20,618	31,994	7.9	47.9	17.2	10	10	3	6.00	Free	3y
Kilkenny	12,822	8,911	21,733	18.7	47.3	24.8	6	3	3	15.00	Free	Annually
Laois	4,972	2,562	7,534	**	**	11.2	6	5	3	10.00	Free	Annually
Leitrim	3,662	2,065	5,727	15.9	35.0	19.8	nl	nl	4	€0.25 pi	Free	Annually
Limerick	11,111	7,154	18,265	10.6	26.9	13.9	3	3	2	Free	Free	Annually
Longford	2,603	3,657	6,260	9.7	49.0	18.2	6	4	3	2.50	Free	Annually
Louth	7,287	4,629	11,916	8.4	18.8	10.7	5	5	3	7.00	Free	Annually
Mayo	13,824	14,686	28,510	14.0	57.8	23.0	5	5	3	3.00	Free	Annually
Meath	11,767	9,464	21,231	9.4	24.8	13.0	4	4	2	Free	Free	Annually
Monaghan	3,804	4,210	8,014	8.6	35.5	14.3	4	3	3	3.00	Free	
Offaly	5,033	5,813	10,846	9.2	36.4	15.3	6	4	4	10.00	Free	Annually
Roscommon	4,645	3,763	8,408	9.9	31.4	14.3	6	3	3	3.80	Free	Annually
Sligo	7,521	3,380	10,901	15.4	28.4	17.9	10	10	3	Free	Free	Annually
South Dublin <sup>1</sup>	32,092	22,301	54,393	16.6	41.6	22.0	10	6	3	Free	Free	3Y
Tipperary JLC	11,049	10,616	21,665	9.4	33.6	14.5	4	4	3	7.00	Free	Annually
Waterford	6,541	5,919	12,460	13.5	43.4	20.0	5	5	3	7.60	Free	Annually
Westmeath	7,016	5,351	12,367	11.4	30.3	15.6	6	4	3	7.00	Free	Annually
Wexford	9,235	9,351	18,586	9.0	32.0	14.1	10	10	3	Free	Free	4Y
Wicklow	16,175	9,019	25,194	16.3	33.2	20.0	5	3	3	Free	Free	Annually
Total: 28	374,851	262,726	637,577	13.6	34.9	18.1						
City Councils:												
Cork	13,376	8,226	21,602	13.2	45.3	18.1	6	4	2	12.50	Free	Annually
Dublin	67,358	17,155	84,513	15.7	22.6	16.7	8	6	3	Free	Free	3Y
Limerick	7,140	6,421	13,561	16.5	68.5	25.8	6	4	2	Free	Free	Annually
Waterford	6,411	3,600	10,011	17.3	41.0	21.9	10	10	3	12.00	Free	Annually
Total: 4	94,285	35,402	129,687	15.4	31.6	17.9						
TOTAL: 32	469,136	298,128	767,264	13.9	34.5	18.1						



Public Library Statistics, 2007 Table 6: SERVICE POINTS.

Authority	B R A N C H E S (hours open per week)					TOTAL	Total hours open to the public per week	Number of computerised service points:			No. of public access terminals	CENTRES	OTHER SERVICE POINTS	MOBILE LIBRARIES			TOTAL NO. OF SERVICE POINTS	
	Over 40	30-39	20-29	10-19	Under 10			Library management systems	Number of OPACs	with Internet access				No. of units	Hours open to the public	per schedule of x weeks		Number of stops
County Councils:																		
Carlow	1	1	1	0	0	3	110.25	3	4	3	18	0	0	0	0		3	
Cavan	3	0	1	3	3	10	207.50	3	0	7	26	0	0	0	0		10	
Clare	7	5	1	4	0	17	548.00	17	111	17	104	0	0	0	0		17	
Cork	13	6	4	5	0	28	949.50	24	0	28	93	0	0	6	2	507	34	
Donegal	1	7	4	3	1	16	463.50	13	86	15	86	0	14	0.5	1	12	30.5	
Dún Laoghaire - Rathdown	3	5	1	1	0	10	349.00	9	14	9	44	0	0	0			10	
Fingal <sup>1</sup>	4	4	0	0	0	8	355.00	9	13	9	87	0	0	3	1	50	11	
Galway	1	8	3	14	4	30	614.00	12.0	12	30	87	7	0	1	20	65	38	
Kerry	4	5	0	0	0	9	350.00	9	7	9	44	0	1	2	25.5/33	2	70	
Kildare	2	5	3	7	1	18	426.50	11	61	17	61	0	0	1	26.1	3	19	
Kilkenny	0	5	3	0	0	8	243.00	5	27	5	27	0	0	1	28	3	9	
Laois	1	2	0	4	5	12	198.50	7	3	9	32	0	0	0			12	
Leitrim	2	3	0	3	1	9	246.50	9	11	9	28	0	0	0			9	
Limerick	3	2	2	9	4	20	393.50	5	5	23	39	5	0	2	27	2	27	
Longford	1	1	1	3	0	6	158.50	6	8	6	16	0	0	0			6	
Louth	0	3	2	0	0	5	155.00	5	40	5	40	0	11	1	16.4	2	17	
Mayo	0	5	11	1	0	17	440.00	14	30	16	95	2	2	0			21	
Meath	4	4	1	4	0	13	377.00	13	10	12	54	0	0	0			13	
Monaghan	0	1	3	1	0	5	120.00	5	0	5	23	0	0	1	28	2	6	
Offaly	0	3	1	4	1	9	198.50	9	50	9	50	2	0	0			11	
Roscommon	0	3	2	1	1	7	166.00	5	1	6	19	0	8	1	22	2	16	
Sligo	2	1	0	2	0	5	146.50	5	40	5	38	0	0	0			5	
South Dublin <sup>2</sup>	4	1	0	1	0	6	304.50	6		6		0	0	4	208	4	10	
Tipperary JLC	6	2	1	2	1	12	397.75	9	66	12	66	0	0	0			12	
Waterford	0	2	1	4	1	8	185.50	8	30	8	30	0	0	0			8	
Westmeath	2	2	0	3	0	7	203.00	7	9	7	45	0	2	0			9	
Wexford	1	1	3	0	0	5	151.50	5	44	5	44	1	2	2	22/24	2	10	
Wicklow	5	1	1	6	0	13	367.00	13	7	13	44	1	20	1	16	2	35	
Total: 28	70	88	50	85	23	316	8,825.50	246	689	305	1340	18	60	26.5		1,292	420.5	
City Councils:																		
Cork	4	3	0	0	0	7	284.50	7	19	7	102	0	0	1	13	1	2	8
Dublin	15	8	0	0	0	23	1046.00	23	50	23	170	47	644	2	42	**	29	716
Limerick	2	1	0	0	0	3	122.50	3	3	3	46	0	1	1	20	10	20	5
Waterford	2	0	1	0	0	3	120.00	3	50	3	50	0	0	0				3
Total: 4	23	12	1	0	0	36	1,573.00	36	122	36	368	47	645	4			51	732
TOTAL: 32	93	100	51	85	23	352	10,398.50	282	811	341	1,708	65	705	30.5			1,343	1,153

<sup>1</sup> Fingal: Garristown library closed for renovations. Malahide Library was closed for refurbishment until December 17 2007.

<sup>2</sup> South Dublin: Central Library was closed for renovation from August 3 2007 until June 2008.

Public Library Statistics, 2007. Table 6.1: Agency Services												
Authority	Number of establishments served			Number of FTE staff employed			Gross expenditure			No. of volumes on loan		
	Prisons	Hospitals	TOTAL	Prisons	Hospitals	TOTAL	Prisons	Hospitals	TOTAL	Prisons	Hospitals	TOTAL
County Councils:												
Carlow	0	0	0	0	0	0	0	0	0	0	0	0
Cavan	1	0	1	0.20	0	0.20	7,536	0	7,536	1,211	0	1,211
Clare	0	0	0	0	0	0	0	0	0	0	0	0
Cork	0	0	0	0	0	0	0	0	0	0	0	0
Donegal	0	0	0	0	0	0	0	0	0	0	0	0
Dún Laoghaire - Rathdown	0	0	0	0	0	0	0	0	0	0	0	0
Fingal	0	0	0	0	0	0	0	0	0	0	0	0
Galway	0	0	0	0	0	0	0	0	0	0	0	0
Kerry	0	7	7	0	1	1	0	**	0	0	**	0
Kildare	0	1	1	0	0.1	0.1	0	3,000	3,000	0	381	381
Kilkenny	0	0	0	0	0	0	0	0	0	0	0	0
Laois	1	0	1	2	0	2	**	0	0	**	0	0
Leitrim	0	0	0	0	0	0	0	0	0	0	0	0
Limerick	0	0	0	0	0	0	0	0	0			0
Longford	0	0	0	0	0	0	0	0	0	0	0	0
Louth	0	0	0	0	0	0	0	0	0	0	0	0
Mayo	0	2	2	0	1	1	0	**	0	0	7,000	7,000
Meath	0	0	0	0	0	0	0	0	0	0	0	0
Monaghan	0	0	0	0	0	0	0	0	0	0	0	0
Offaly	0	0	0	0	0	0	0	0	0	0	0	0
Roscommon	0	0	0	0	0	0	0	0	0	0	0	0
Sligo	0	0	0	0	0	0	0	0	0	0	0	0
South Dublin	0	0	0	0	0	0	0	0	0	0	0	0
Tipperary JLC	0	0	0	0	0	0	0	0	0	0	0	0
Waterford	0	0	0	0	0	0	0	0	0	0	0	0
Westmeath	0	0	0	0	0	0	0	0	0	0	0	0
Wexford	0	0	0	0	0	0	0	0	0	0	0	0
Wicklow	1	0	1	0.30	0	0.30	22,500	0	22,500	1,928	0	1,928
Total: 28	3	10	13	2.50	2.1	4.60	30,036	3,000	33,036	3,139	7,381	10,520
City Councils:												
Cork	1	0	1	0.02	0	0.02	4,058	0	4,058	0	0	0
Dublin	9	0	9	3	0	3	148,568	0	148,568	**	0	0
Limerick	0	1	1	**	0	0	**	0	0	**	0	0
Waterford	0	0	0	0	0	0	0	0	0	0	0	0
Total: 4	10	1	11	3.02	0	3.02	152,626	0	152,626	0	0	0
TOTAL: 32	13	11	24	5.52	2	7.62	182,662	3,000	185,662	3,139	7,381	10,520

Public Library Statistics, 2007. Table 7: SERVICES TO SCHOOLS									
Authority	NUMBER OF SCHOOLS SERVED				PUPIL POPULATION SERVED				TOTAL
	Primary	Secondary	Vocational	TOTAL	Primary	Secondary	Vocational	TOTAL	
County Councils:									
Carlow	38	0	0	38	6,187	0	0	6,187	
Cavan	65	0	0	65	8,349	0	0	8,349	
Clare	119	0	0	119	**	0	0	**	
Cork	294	0	0	294	35,983	0	0	35,983	
Donegal	130	23	0	153	**	**	0	**	
Dún Laoghaire - Rathdown	66	0	0	66	16,150	0	0	16,150	
Fingal	87	0	0	87	26,423	0	0	26,423	
Galway	233	0	0	233	23,769	0	0	23,769	
Kerry	143	0	0	143	15,085	0	0	15,085	
Kildare	101	0	0	101	23,671	0	0	23,671	
Kilkenny	77	0	0	77	9,826	0	0	9,826	
Laois	35	0	0	35	2,957	0	0	2,957	
Leitrim	42	0	0	42	**	0	0	**	
Limerick	116	0	0	116	13,391	0	0	13,391	
Longford	39	0	0	39	**	0	0	**	
Louth	75	0	0	75	14,317	0	0	14,317	
Mayo	187	0	0	187	13,628	0	0	13,628	
Meath	111	6	0	117	20,081	5,000	0	25,081	
Monaghan	64	0	0	64	6,671	0	0	6,671	
Offaly	68	0	0	68	9,238	0	0	9,238	
Roscommon	94	4	2	100	6,815	3,400	**	10,215	
Sligo	68	0	0	68	**	0	0	**	
South Dublin	99	0	0	99	28,639	0	0	28,639	
Tipperary JLC	181	0	0	181	**	**	**	**	
Waterford	56	0	0	56	6,638	0	0	6,638	
Westmeath	78	0	0	78	9,971	0	0	9,971	
Wexford	105	0	0	105	16,254	0	0	16,254	
Wicklow	86	0	0	86	14,436	0	0	14,436	
Total: 28	2,857	33	2	2,892	328,479	8,400	0	336,879	
City Councils:									
Cork	60	0	0	60	142,280	0	0	142,280	
Dublin	225	0	0	225	43,674		0	43,674	
Limerick	30	0	0	30	6,734	0	0	6,734	
Waterford	21	8	0	29	6,110	4,169	0	10,279	
Total: 4	336	8	0	344	198,798	4,169	0	202,967	
TOTAL: 32	3,193	41	2	3,236	527,277	12,569	0	539,846	



Public Library Statistics, 2007. Table 7.1: SERVICES TO SCHOOLS - Stock and issues.								
Authority	S T O C K			Items per head of pupil population	I S S U E S			Issues per head of pupil population
	Books	Non-book	TOTAL		Books	Non-book	TOTAL	
County Councils:								
Carlow	**	**	**	**	**	**	**	**
Cavan	34,197	0	34,197	4.1	13,156	0	13,156	1.6
Clare	**	**	**	**	**	**	**	**
Cork	58,474	165	58,639	1.6	20,526	21	20,547	0.6
Donegal	10,617	0	10,617	**	5,000	0	5,000	**
Dun Laoghaire/Rathdown	132,638	250	132,888	8.2	9,497	1,916	11,413	0.7
Fingal	30,412	424	30,836	1.2	30,411	425	30,836	1.2
Galway	133,054	0	133,054	5.6	44,273	0	44,273	1.9
Kerry	53,114	0	53,114	3.5	22,986	0	22,986	1.5
Kildare	42,919	0	42,919	1.8	10,724	193	10,917	0.5
Kilkenny	**	**	**	**	57,734	**	57,734	5.9
Laois	**	**	**	**	5,041	0	5,041	1.7
Leitrim	**	**	**	**	**	**	**	**
Limerick	**	**	**	**	**	**	**	**
Limerick	**	**	**	**	**	**	**	**
Limerick	**	**	**	**	**	**	**	**
Limerick	**	**	**	**	**	**	**	**
Limerick	**	**	**	**	**	**	**	**
Limerick	**	**	**	**	**	**	**	**
Limerick	**	**	**	**	**	**	**	**
Limerick	**	**	**	**	**	**	**	**
Limerick	**	**	**	**	**	**	**	**
Limerick	**	**	**	**	**	**	**	**
Limerick	**	**	**	**	**	**	**	**
Limerick	**	**	**	**	**	**	**	**
Limerick	**	**	**	**	**	**	**	**
Limerick	**	**	**	**	**	**	**	**
Limerick	**	**	**	**	**	**	**	**
Limerick	**	**	**	**	**	**	**	**
Limerick	**	**	**	**	**	**	**	**
Limerick	**	**	**	**	**	**	**	**
Limerick	**	**	**	**	**	**	**	**
Limerick	**	**	**	**	**	**	**	**
Limerick	**	**	**	**	**	**	**	**
Limerick	**	**	**	**	**	**	**	**
Limerick	**	**	**	**	**	**	**	**
Limerick	**	**	**	**	**	**	**	**
Limerick	**	**	**	**	**	**	**	**
Limerick	**	**	**	**	**	**	**	**
Limerick	**	**	**	**	**	**	**	**
Limerick	**	**	**	**	**	**	**	**
Limerick	**	**	**	**	**	**	**	**
Limerick	**	**	**	**	**	**	**	**
Limerick	**	**	**	**	**	**	**	**
Limerick	**	**	**	**	**	**	**	**
Limerick	**	**	**	**	**	**	**	**
Limerick	**	**	**	**	**	**	**	**
Limerick	**	**	**	**	**	**	**	**
Limerick	**	**	**	**	**	**	**	**
Limerick	**	**	**	**	**	**	**	**
Limerick	**	**	**	**	**	**	**	**
Limerick	**	**	**	**	**	**	**	**
Limerick	**	**	**	**	**	**	**	**
Limerick	**	**	**	**	**	**	**	**
Limerick	**	**	**	**	**	**	**	**
Limerick	**	**	**	**	**	**	**	**
Limerick	**	**	**	**	**	**	**	**
Limerick	**	**	**	**	**	**	**	**
Limerick	**	**	**	**	**	**	**	**
Limerick	**	**	**	**	**	**	**	**
Limerick	**	**	**	**	**	**	**	**
Limerick	**	**	**	**	**	**	**	**
Limerick	**	**	**	**	**	**	**	**
Limerick	**	**	**	**	**	**	**	**
Limerick	**	**	**	**	**	**	**	**
Limerick	**	**	**	**	**	**	**	**
Limerick	**	**	**	**	**	**	**	**
Limerick	**	**	**	**	**	**	**	**
Limerick	**	**	**	**	**	**	**	**
Limerick	**	**	**	**	**	**	**	**
Limerick	**	**	**	**	**	**	**	**
Limerick	**	**	**	**	**	**	**	**
Limerick	**	**	**	**	**	**	**	**
Limerick	**	**	**	**	**	**	**	**
Limerick	**	**	**	**	**	**	**	**
Limerick	**	**	**	**	**	**	**	**
Limerick	**	**	**	**	**	**	**	**
Limerick	**	**	**	**	**	**	**	**
Limerick	**	**	**	**	**	**	**	**
Limerick	**	**	**	**	**	**	**	**
Limerick	**	**	**	**	**	**	**	**
Limerick	**	**	**	**	**	**	**	**
Limerick	**	**	**	**	**	**	**	**
Limerick	**	**	**	**	**	**	**	**
Limerick	**	**	**	**	**	**	**	**
Limerick	**	**	**	**	**	**	**	**
Limerick	**	**	**	**	**	**	**	**
Limerick	**	**	**	**	**	**	**	**
Limerick	**	**	**	**	**	**	**	**
Limerick	**	**	**	**	**	**	**	**
Limerick	**	**	**	**	**	**	**	**
Limerick	**	**	**	**	**	**	**	**
Limerick	**	**	**	**	**	**	**	**
Limerick	**	**	**	**	**	**	**	**
Limerick	**	**	**	**	**	**	**	**
Limerick	**	**	**	**	**	**	**	**
Limerick	**	**	**	**	**	**	**	**
Limerick	**	**	**	**	**	**	**	**
Limerick	**	**	**	**	**	**	**	**
Limerick	**	**	**	**	**	**	**	**
Limerick	**	**	**	**	**	**	**	**
Limerick	**	**	**	**	**	**	**	**
Limerick	**	**	**	**	**	**	**	**
Limerick	**	**	**	**	**	**	**	**
Limerick	**	**	**	**	**	**	**	**
Limerick	**	**	**	**	**	**	**	**
Limerick	**	**	**	**	**	**	**	**
Limerick	**	**	**	**	**	**	**	**
Limerick	**	**	**	**	**	**	**	**
Limerick	**	**	**	**	**	**	**	**
Limerick	**	**	**	**	**	**	**	**
Limerick	**	**	**	**	**	**	**	**
Limerick	**	**	**	**	**	**	**	**
Limerick	**	**	**	**	**	**	**	**
Limerick	**	**	**	**	**	**	**	**
Limerick	**	**	**	**	**	**	**	**
Limerick	**	**	**	**	**	**	**	**
Limerick	**	**	**	**	**	**	**	**
Limerick	**	**	**	**	**	**	**	**
Limerick	**	**	**	**	**	**	**	**
Limerick	**	**	**	**	**	**	**	**

## Notes on the analysed returns

A small number of authorities are unable to supply detailed data as requested). An Chomhairle has used other data at its disposal to apply weightings to these figures in order to provide a more accurate picture. The weightings relate mainly to, collections, issues and membership figures. All data substituted by An Chomhairle has been printed in green.

**Table 1:** Income remains the same as for previous years.

Grants from the Department of the Environment, Heritage & Local Government made have been designated as Capital for the purposes of this publication and are shown on **Table 1.2**. Details of capital income, as notified by the contributing authorities, are contained on **Table 2.2**.

**Table 3:** *Staffing* has been simplified to make the table more easily readable. It no longer contains details of grades by location (headquarters, branches or other service points). This information is still available on request from An Chomhairle.

Authorities are asked to provide details of staff complement as full-time equivalents (FTE). As some authorities supply details of staff in post rather than staff complement this has led to some fluctuation in the returns. The number of Branch Librarians was usually given in the returns as an actual number rather than as FTE although for 2003 onwards the convention of expressing posts as full-time equivalents has been strictly implemented hence the apparent reduction in para-professional posts (includes branch librarians). Some authorities do not count library support staff, such as cleaners, as the part of the library's staff complement. These two changes are reflected in the apparent decrease in staffing for 2003. The 2003 figures accordingly present a more accurate picture of current staffing levels. Fingal and Dublin City | Councils: the figures given in Table 3 relate to staff complement; figure in Table 3.3 show the actual number of filled posts.

**Table 4:** *Collections - books and serials* and **Table 4.2:** *Collections – multimedia items* no longer categorize withdrawn stock items. They are now given as the total figure per authority. The full set of information is still available on request from An Chomhairle.

Kerry County Library: 2005 stock holdings for schools includes additions to stock between 2000 and 2006. Kildare County Library: An ongoing changeover in library management systems has resulted in Kildare's stock figures for 2005 being limited to those service points which have been automated.

**Table 5.1:** *Registered membership figures:* In 2001 the definition of 'number of registered members' was redefined to 'number of active members', an active member being someone who had borrowed at least one item during the period January 1st to December 31<sup>st</sup>. This redefinition was introduced in order to eliminate the perceived advantage of having long registration cycles, resulting in membership files which included an unknown number of lapsed users. The change in definition produced a decrease in the number of reported membership figures in those authorities whose registration cycles exceeded one year. The change in definition was introduced in an attempt to present a more complete picture of registered membership.

**Table 6:** *Service points* include data on the number of service points with online public access catalogues (Opacs) and Internet access. In both cases, the number of available terminals is also given. This Table also gives details of the overall, planned opening hours per week for the branch libraries.

**Table 6.1:** *Agency services* contain information on services provided by public library authorities to other organisations, usually on a cost recovery basis.

**Table 7** details library services to schools as provided by the library authority.

## Appendix 1: Population tables

Authority	2002 Census	2006 Census	% change
<b>County Councils:</b>			
Carlow	46,014	50,349	9.4
Cavan	56,546	64,003	13.2
Clare	103,277	110,950	7.4
Cork	324,767	361,877	11.4
Donegal	137,575	147,264	7.0
Dún Laoghaire-Rathdown	191,792	194,038	1.2
Fingal	196,413	239,992	22.2
Galway	209,077	231,670	10.8
Kerry	132,527	139,835	5.5
Kildare	163,944	186,335	13.7
Kilkenny	80,339	87,558	9.0
Laois	58,774	67,059	14.1
Leitrim	25,799	28,950	12.2
Limerick	121,281	131,516	8.4
Longford	31,068	34,391	10.7
Louth	101,821	111,267	9.3
Mayo	117,446	123,839	5.4
Meath	134,005	162,831	21.5
Monaghan	52,593	55,997	6.5
Offaly	63,663	70,868	11.3
Roscommon	53,774	58,768	9.3
Sligo	58,200	60,894	4.6
South Dublin	238,835	246,935	3.4
Tipperary JLC	140,131	149,244	6.5
Waterford	56,952	62,213	9.2
Westmeath	71,858	79,346	10.4
Wexford	116,596	131,749	13.0
Wicklow	114,676	126,194	10.0
<i>Total County</i>	<i>3,199,743</i>	<i>3,515,932</i>	<i>9.9</i>
<b>City Councils:</b>			
Cork	123,062	119,418	-3.0
Dublin	495,781	506,211	2.1
Limerick	54,023	52,539	-2.7
Waterford	44,594	45,748	2.6
<i>Total City Councils:</i>	<i>717,460</i>	<i>723,916</i>	<i>0.9</i>
<b>TOTAL</b>	<b>3,917,203</b>	<b>4,239,848</b>	<b>8.2</b>

**An Chomhairle Leabharlanna**  
53 & 54 Upper Mount street  
Dublin2, Ireland

**Telephone**  
+353 1 6761963 / 6761167

**Fax**  
+353 1 6766721

**Email**  
[info@librarycouncil.ie](mailto:info@librarycouncil.ie)

**Web**  
[www.librarycouncil.ie](http://www.librarycouncil.ie)