



**Public Library  
Authorities  
ANNUAL ESTIMATES  
OF  
EXPENDITURE  
2008**

**AN CHOMHAIRLE LEABHARLANNA  
THE LIBRARY COUNCIL**

## AN CHOMHAIRLE LEABHARLANNA THE LIBRARY COUNCIL

53 & 54 Upper Mount Street  
Dublin 2  
Ireland

*Telephone:* +353 (0)1-678 4900  
*Fax:* +353 (0)1-676 6721  
*E-mail:* [info@librarycouncil.ie](mailto:info@librarycouncil.ie)  
*Web site:* [www.librarycouncil.ie](http://www.librarycouncil.ie)

An Chomhairle Leabharlanna was established by the *Public Libraries Act 1947*.

The functions of the Council, as outlined in the *Local Government Act, 2001* are:

- to provide advice and assistance to local authorities in relation to the improvement of the public library service
- to make such recommendations to the Minister in relation to the public library service as it sees fit
- to maintain and operate the central library established under Section 2 of the *Public Libraries Act, 1947 (No.40 of 1947)*
- to promote and facilitate library co-operation

Statistical series issued by An Chomhairle Leabharlanna:

*Public Library Authorities Annual Estimates of Expenditure*  
*Public Library Authority Statistics - Actuals.* (Annual)

Statistical data on Irish public libraries also appears in:

*Statistical Abstract / Central Statistics Office.* - Dublin: Stationery Office  
(Annual)

*Public Library Statistics - Actuals.* - London: CIPFA,  
(Annual)

*Public Library Statistics -Estimates.* - London: CIPFA, (Annual)

*Cover photograph: Limerick Studies, Limerick County Library HQ, Lissanalta House, Dooradoyle; opened March 28 2008 by the Minister for the Environment, Heritage and Local Government, John Gormley, T.D.*

## CONTENTS

<i>Review</i>	<i>1</i>
<i>Commentary</i>	<i>2-6</i>
• Total local authority expenditure on public library services	2
• Stock fund	2
• <i>Branching Out</i> advances, 1999-2008	4
<i>Charts</i>	
1 Expenditure on library services, 2004-2008	2
2 Estimated stock fund expenditure, 2004-2008	3
3 Comparison of per capita expenditure on stock (excluding school grant), 2004 and 2008	3
4 Public library authority stock funds and the Primary School Library Grant Scheme, 2004-2008	4
5 Public library authority expenditure per head on stock	4
6 Library authority expenditure per head on stock, 2008	5
7 Library authority expenditure on stock as a % of overall expenditure	5
<i>Summary tables</i>	
1 Estimated stock expenditure, 2004-2008	6
2 Estimated expenditure, 2004-2008	6
<i>Tables</i>	
1 Public library authority estimates of expenditure, 2008	7
2 Estimates of total library expenditure, 2004-2008	8
2.1 Percentage change in estimated library expenditure on previous year	9
2.2 Estimated total library expenditure per capita, 2004-2008	10
3 Estimated local authority bookfund expenditure, 2004-2008	11
3.1 Estimated bookfund expenditure - Primary School Library Scheme book grant, 2004-2008	12
3.2 Estimated bookfund expenditure: local authority + Primary School Library Scheme book grant, 2004-2008	13
3.3 Estimated bookfund expenditure per capita, 2004-2008 - excluding Primary School Library Scheme book grant	14
3.4 Estimated bookfund expenditure per capita, 2004-2008 - including Primary School Library Scheme book grant	15
3.5 Estimated bookfund as a percentage of overall library expenditure, 2004-2008.	16
4 Estimated local authority expenditure - ALL programmes, 2004-2008	17
4.1 Estimated expenditure on library services as a percentage of total local authority expenditure, 2004-2008.	18
5 Estimated Capital Expenditure, 2008	19
<u>Appendix 1:</u> Notes on the 2008 returns	20
<u>Appendix 2:</u> Guidance notes	20
<u>Appendix 2:</u> Population statistics, 2002 and 2006	21

## Review

An Chomhairle Leabharlanna is pleased to publish the twenty first annual statistical survey of Irish public library authority estimated expenditure for the year 2008.

### Total Spend 2007-2008

- total library spending in Ireland is set to increase by 10.7% over 2007 to €130.5 million (see Table 2).
- expenditure per head of population on public library services will increase from €27.81 to €30.78 (see Table 2.2).
- all but one of the thirty two library authorities plan to increase their estimated spending on public library services.

### Stock Spend

- local authority expenditure on library stock is set to increase by 9.3% from €13.5 million to €14.8 million (see Table 3).
- twenty seven authorities have increased their spending on stock and four have allocated the same amount as for 2007. One authority plans to spend less on stock in 2008 compared with 2007. Five authorities plan to spend less in 2008 than they did in 2004 (see Table 3).
- local authority expenditure on stock stands at €3.49 per capita, increased from €3.20 in 2007 (see Table 3.3).
- total expenditure on stock (including the Primary School Library Book Grant) will increase by 8.6% from the 2007 figure of €15.6 million to €17 million (see Table 3.2).

### *Branching Out* advances: 1999-2007

Since *Branching Out*, taking 1999 as the base year, estimated overall expenditure on public libraries has increased by 157% from €51 million to €130.5 million. Public library authority expenditure on stock over the same period increased by 170.5% from €5.5 million to €14.8 million.

An Chomhairle wishes to acknowledge the combined efforts of the Minister, his officials, the Chairs, members, managers and staff of library authorities in enhancing existing services while planning new growth.

Expenditure on stock requires further investment in 19 authorities. In order to achieve the stock fund target of €3.27 established by the *Branching Out* Steering Group, advances are particularly important.

An Chomhairle Leabharlanna is committed to providing accurate, comprehensive and timely information on the public library service in Ireland and trusts that this publication is a further contribution to that end.

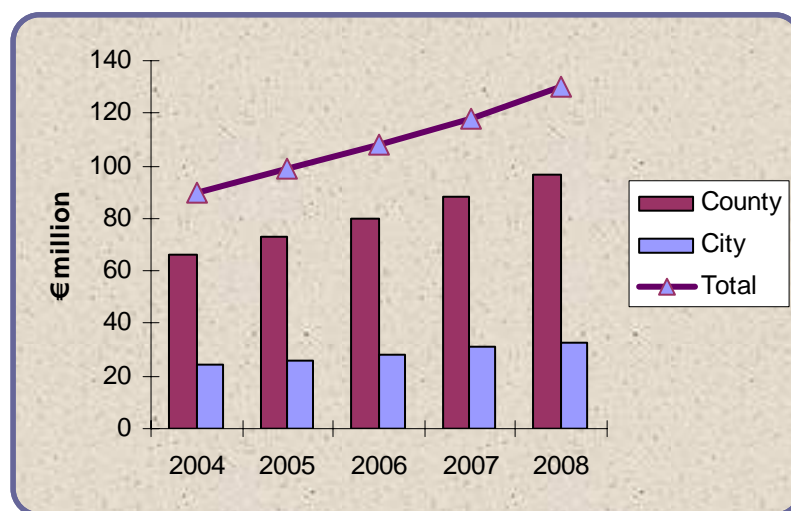
We are indebted to the public library authorities and the Departments of the Environment, Heritage and Local Government and of Education and Science respectively for their assistance in compiling the statistical data.

**Norma McDermott**  
**Director**

## Commentary

### Total local authority expenditure on public libraries

Local authorities have estimated that they will spend €130,485,291 from their revenue budgets on public library services in 2008 (*Table 1*). This represents an increase of 10.7% on the 2006 figure of €117,891,091.



*Chart 1: Estimates expenditure on library services, 2004-2008*

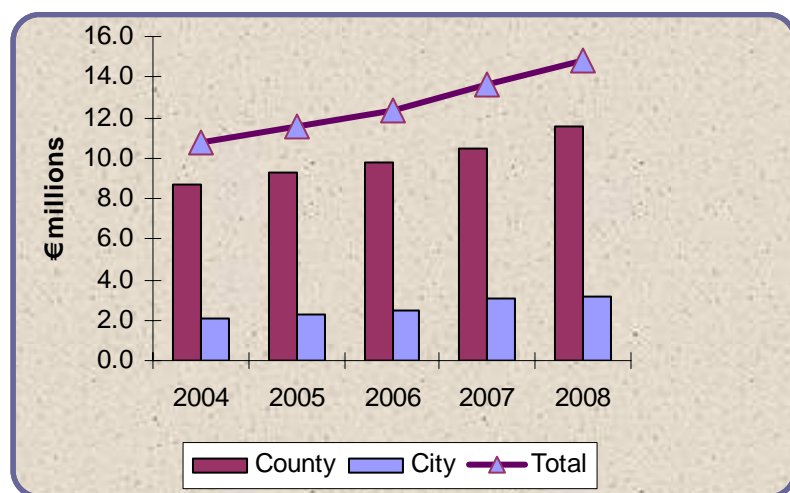
Average expenditure per head of population has increased from €27.81 in 2007 to €30.78 in 2008. In the first year of the *Branching Out* programme, this figure stood at €13.99.

Per capita expenditure for 2008 ranges from €17.69 to €50.85 (*Table 2.2*).

Library budgets have risen by 10.7% in the last year which is in advance of the average local authority increase of 7.2% between 2007 and 2008.

### Stock fund

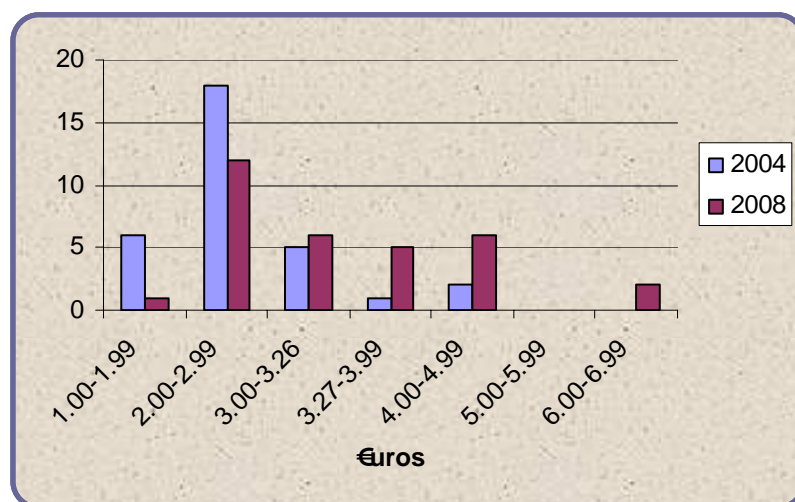
Local authority stock (books, serials, multimedia materials) fund in 2008 is estimated at €14,814,499 (*Table 3*) - this represents an increase of 9.3% on 2007.



*Chart 2: Estimated stock fund expenditure, 2004-2008*

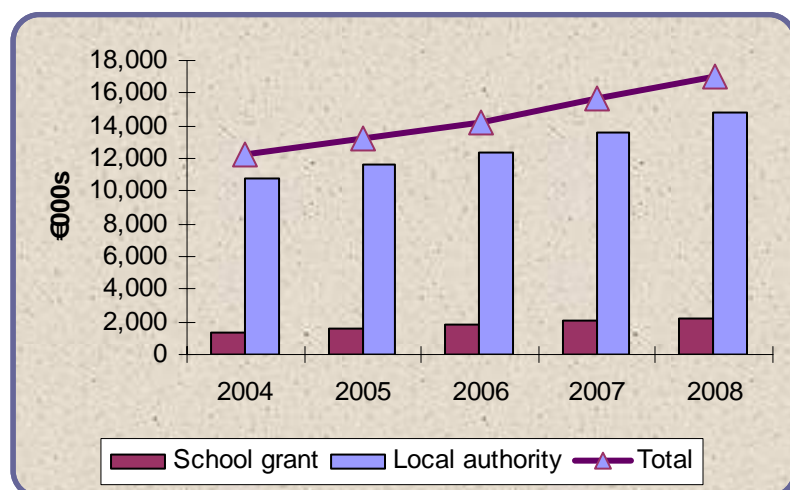
Twenty seven authorities have allocated additional stock funds over and above those for 2007.

Four authorities plan to spend substantially the same on stock in 2008 as in 2007 and one plans to spend less on stock (*Table 3*).



*Chart 3: Comparison of per capita expenditure on stock (excluding school grant) between 2003 and 2007 (€). See also Table 4.*

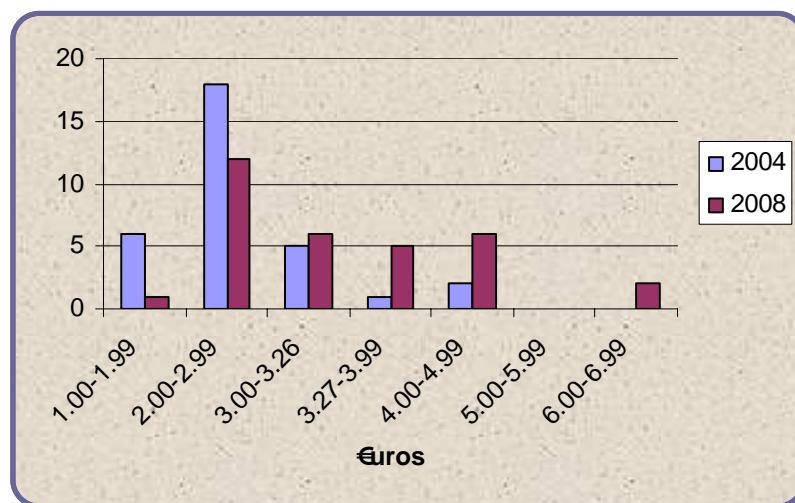
Five authorities have allocated less money for the purchase of stock in 2008 than they did in 2004 despite a rise of 12.5% in the Consumer Price Index from December 2003 to December 2007.



*Chart 4: Public library authority [PLA] stock funds and the Primary School Library Grant Scheme [PSLGS], 2004-2008*

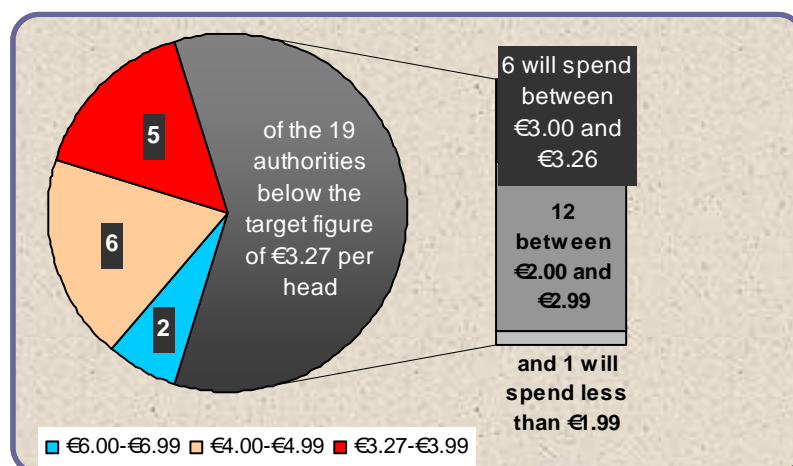
### Stock fund target

Thirteen authorities will meet or exceed the target set by the *Branching Out Steering Group* of €3.27 per head of resident population on stock for 2008. Estimated expenditure on stock in the remaining nineteen authorities will fall below that target with six spending between €3.00 and €3.26, twelve spending between €2.00 and €2.99 and one spending less than €1.99 – see *Charts 5 and 6 and Table 3.3*.



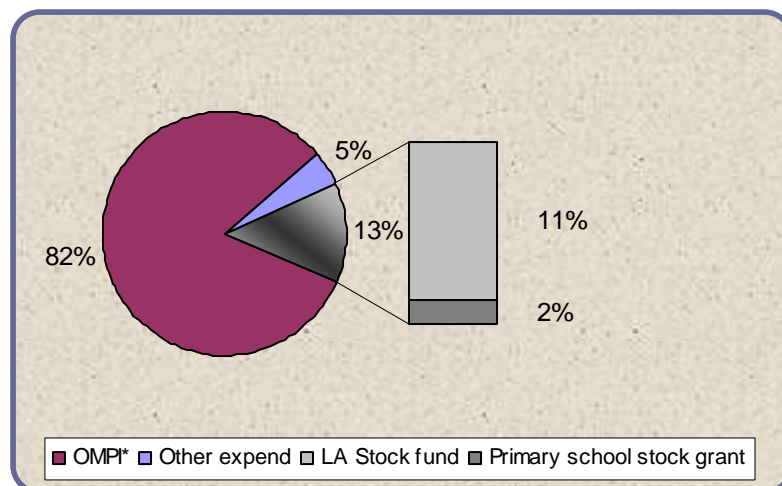
*Chart 5: Library authority expenditure per head on library stock, 2008.*





*Chart 6: Library authority expenditure per head on library stock, 2008.*

Expenditure on stock as a percentage of total expenditure has fallen to 13% compared with 13.2% in 2007.



*Chart 7: Library authority expenditure on stock as a percentage of overall expenditure, 2008.*

OMPI = Operation & maintenance + Provision and improvement

An Chomhairle Leabharlanna will continue to monitor this general shortfall and recommends that library authorities expand the stock budget to optimise reader development in an expanding and increasingly diverse population.



	2004	2005	2006	2007	2008	% change on 2004	% change on 2007
<b>PLA Stock</b>	10,811,902	11,609,920	12,336,306	13,544,466	14,814,499	37%	9.3%
<b>Per head</b>	2.76	2.96	3.15	3.20	3.49	26.4%	9.3%
<b>Total stock *</b>	12,220,104	13,241,928	14,216,657	15,619,976	16,971,225	38.9%	8.7%
<b>Per head</b>	3.12	3.38	3.63	3.68	4.00	28.3%	8.6%
<b>% of total expend</b>	13.6	13.4	13.2	13.2	13		

*Summary table 1: Estimates stock expenditure, 2004-2008*

*\* includes primary school library grant*

Year	Expenditure on Libraries	% Increase on Previous Year	Local Authority Expenditure All programmes	% Change on Previous Year	Expenditure on Libraries as % of Total Expend.
<b>2008</b>	<b>130,485,291</b>	<b>+ 10.7</b>	<b>4,869,169,397</b>	<b>+ 7.2</b>	<b>2.7</b>
2007	117,891,091	+ 9.3	4,541,072,535	+ 10	2.6
2006	107,888,318	+ 9	4,128,398,921	+ 9.8	2.6
2005	98,975,804	+ 10.1	3,758,582,596	+ 7.8	2.6
2004	89,878,574	+ 10.6	3,487,382,044	+ 7.8	2.6

*Summary table 2: Estimated expenditure, 2004-2008.*

The general improvements in service and infrastructure have led to a growing demand for services. A higher level of commitment to the stock budget which is the lifeblood of any public library service is required if demand is to be met.

Fifteen authorities plan to increase their percentage expenditure on libraries. A further six have maintained the same percentage of expenditure as in 2007. Eleven have reduced their percentage expenditure on libraries.

Key to the following Tables:

Figures in **green** have been supplied by An Chomhairle Leabharlanna

Figures in **blue** indicate no significant change on the previous years' allocation

Figures in **red** indicate a decrease on the previous years' allocation

Table 1: Public Library Authority Estimates of Expenditure, 2008.

€

Library authority	Operation & maintenance *	Stock General	Stock Primary School Scheme	Total stock fund	Contribution to AnCL	Loan charges	Other	Total
<b>County Councils</b>								
Carlow	1,113,596	144,000	28,000	172,000	16,854	0	0	1,302,450
Cavan	1,450,965	130,000	40,000	170,000	20,100	232,490	82,665	1,956,220
Clare	2,945,248	284,800	56,378	341,178	38,520	24,000	194,214	3,543,160
Cork	7,862,400	1,103,400	170,000	1,273,400	120,000	0	185,000	9,440,800
Donegal	3,030,100	456,400	83,000	539,400	49,300	0	35,000	3,653,800
Dún Laoghaire Rathdown	4,919,200	874,600	77,000	951,600	72,000	0	0	5,942,800
Fingal	7,439,100	1,600,000	124,000	1,724,000	69,800	0	0	9,232,900
Galway	3,601,757	550,000	100,000	650,000	51,000	0	0	4,302,757
Kerry	3,128,000	430,000	69,000	499,000	48,000	0	760,191	4,435,191
Kildare	4,027,029	545,000	106,994	651,994	60,000	220,000	0	4,959,023
Kilkenny	2,338,934	226,000	35,000	261,000	30,000	11,500	103,000	2,744,434
Laois	1,370,500	219,000	36,000	255,000	24,000	68,500	87,000	1,805,000
Leitrim	1,267,818	95,000	14,500	109,500	9,300	65,000	20,500	1,472,118
Limerick	3,779,251	482,700	61,300	544,000	47,000	47,500	0	4,417,751
Longford	1,089,500	123,000	22,000	145,000	12,100	0	38,000	1,284,600
Louth	1,807,500	23,500	60,000	295,000	36,000	88,100	75,000	2,301,600
Mayo	3,002,106	499,200	72,800	572,000	41,454	0	0	3,615,560
Meath	2,460,287	275,000	90,000	365,000	55,000	0	0	2,880,287
Monaghan	1,327,857	175,000	30,000	205,000	20,570	116,034	14,026	1,683,487
Offaly	2,071,159	205,253	40,000	245,253	25,000	0	0	2,341,412
Roscommon	1,077,000	357,000	51,000	408,000	20,000	0	211,000	1,716,000
Sligo	1,352,970	245,000	30,000	275,000	21,000	85,000	15,500	1,749,470
South Dublin	6,388,400	1,000,000	130,000	1,130,000	90,000	0	0	7,608,400
Tipperary JLC	2,976,567	341,500	79,000	420,500	0	290,139	0	3,687,206
Waterford	1,474,645	129,246	30,754	160,000	20,825	16,474	0	1,671,944
Westmeath	1,843,545	165,000	45,000	210,000	26,800	0	0	2,080,345
Wexford	1,980,513	362,000	80,000	442,000	45,560	0	58,585	2,526,658
Wicklow	2,527,637	400,000	65,000	465,000	43,000	108,000	0	3,143,637
<b>Total County:</b>	<b>79,653,584</b>	<b>11,653,099</b>	<b>1,826,726</b>	<b>13,479,825</b>	<b>1,113,183</b>	<b>1,372,737</b>	<b>1,879,681</b>	<b>97,499,010</b>
<b>City Councils</b>								
Cork	4,503,924	440,000	64,500	504,500	39,976	0	345,200	5,393,600
Dublin	19,995,476	2,326,000	197,500	2,523,500	183,150	0	1,273,550	23,975,676
Limerick	1,636,628	170,400	33,000	203,400	20,500	28,000	5,499	1,894,027
Waterford	1,446,346	225,000	35,000	260,000	16,632	0	0	1,722,978
<b>Total City:</b>	<b>27,582,374</b>	<b>3,161,400</b>	<b>330,000</b>	<b>3,491,400</b>	<b>260,258</b>	<b>28,000</b>	<b>1,624,249</b>	<b>32,986,281</b>
<b>All Authorities</b>	<b>107,235,958</b>	<b>14,814,499</b>	<b>2,156,726</b>	<b>16,971,225</b>	<b>1,373,441</b>	<b>1,400,737</b>	<b>3,503,930</b>	<b>130,485,291</b>

\* includes Provision and Improvement of library services

Galway County Council provides a library service to the City on an agency basis.

Contribution to An Chomhairle: the figures given do not include assessments on Galway City Council; North Tipperary County Council or South Tipperary County Council.

N.B.: Estimated additional (non-recurrent) expenditure on stock is given in Table 5

Table 2: Estimates of Total Library Expenditure, 2004-2008.

€

Library authority	2008	2007	2006	2005	2004
<b>County Councils:</b>					
Carlow	1,302,450	1,206,000	1,144,137	1,104,794	1,027,175
Cavan	1,956,220	1,931,408	1,759,347	1,380,139	1,150,266
Clare	3,543,160	3,335,596	3,172,892	2,986,000	2,858,100
Cork	9,440,800	8,073,300	7,590,100	6,823,500	6,123,600
Donegal	3,653,800	3,637,600	3,449,700	3,130,800	2,365,400
Dún Laoghaire Rathdown	5,942,800	5,407,200	4,900,800	4,364,500	3,910,500
Fingal	9,232,900	7,836,700	7,374,500	6,864,700	6,257,800
Galway	4,302,757	4,121,938	3,694,000	3,543,000	3,127,000
Kerry	4,435,191	3,201,048	3,017,648	2,816,500	2,615,000
Kildare	4,959,023	4,774,160	4,566,283	4,117,201	3,786,638
Kilkenny	2,744,434	2,052,200	1,933,500	1,879,300	1,665,500
Laois	1,805,000	1,609,000	1,419,500	1,104,500	958,500
Leitrim	1,472,118	1,368,796	1,181,960	1,037,401	862,244
Limerick	4,417,751	3,056,423	2,707,303	2,471,934	2,308,500
Longford	1,284,600	1,225,278	1,097,000	992,700	897,000
Louth	2,301,600	2,213,100	2,106,690	1,992,754	1,764,890
Mayo	3,615,560	3,368,000	3,215,000	3,093,127	2,918,658
Meath	2,880,287	2,544,153	2,301,384	2,301,665	1,860,300
Monaghan	1,683,487	1,499,790	1,426,109	1,268,251	1,047,357
Offaly	2,341,412	1,633,136	1,305,568	1,242,377	1,161,653
Roscommon	1,716,000	1,820,000	1,567,800	1,227,540	1,120,900
Sligo	1,749,470	1,559,000	1,423,300	1,309,436	1,168,575
South Dublin	7,608,400	7,220,300	6,423,080	6,092,500	5,755,500
Tipperary JLC	3,687,206	3,423,278	2,978,031	2,640,639	2,446,136
Waterford	1,671,944	1,530,181	1,449,915	1,413,700	1,197,300
Westmeath	2,080,345	1,988,584	1,792,598	1,620,393	1,445,792
Wexford	2,526,658	2,466,447	2,461,304	2,158,237	1,801,683
Wicklow	3,143,637	2,908,888	2,656,562	2,325,937	2,010,687
<b>Total County:</b>	97,499,010	87,011,504	80,116,011	73,303,525	65,612,654
<b>City Councils:</b>					
Cork	5,393,600	5,024,500	4,316,000	3,842,117	3,517,800
Dublin	23,975,676	22,546,500	20,287,562	19,102,254	18,243,242
Limerick	1,894,027	1,689,592	1,674,283	1,281,236	1,267,440
Waterford	1,722,978	1,618,995	1,494,462	1,446,672	1,237,438
<b>Total City:</b>	32,986,281	30,879,587	27,772,307	25,672,279	24,265,920
<b>All Authorities</b>	<b>130,485,291</b>	117,891,091	107,888,318	98,975,804	89,878,574

2008 increase on 2007 = 10.7%

**Table 2.1: Percentage Change in Estimated Library Expenditure on Previous Year. %**

<b>Library authority</b>	<b>2008 on 2007</b>	<b>2007 on 2006</b>	<b>2006 on 2005</b>	<b>2005 on 2004</b>	<b>2004 on 2003</b>
<b><i>County Councils:</i></b>					
Carlow	8.0	5.4	3.6	7.6	16.8
Cavan	1.3	9.8	27.5	20.0	21.9
Clare	6.2	5.1	6.3	4.5	-0.1
Cork	16.9	6.4	11.2	11.4	7.7
Donegal	0.4	5.4	10.2	32.4	28.2
Dún Laoghaire Rathdown	9.9	10.3	12.3	11.6	10.3
Fingal	17.8	6.3	7.4	9.7	13.2
Galway	4.4	11.6	4.3	13.3	10.4
Kerry	38.6	6.1	7.1	7.7	15.0
Kildare	3.9	4.6	10.9	8.7	20.1
Kilkenny	33.7	6.1	2.9	12.8	2.5
Laois	12.2	13.3	28.5	15.2	0.3
Leitrim	7.5	15.8	13.9	20.3	11.9
Limerick	44.5	12.9	9.5	7.1	7.2
Longford	4.8	11.7	10.5	10.7	16.6
Louth	4.0	5.1	5.7	12.9	3.9
Mayo	7.4	4.8	3.9	6.0	14.8
Meath	13.2	10.5	4.3	23.7	17.4
Monaghan	12.2	5.2	12.4	21.1	8.1
Offaly	43.4	25.1	5.1	6.9	12.1
Roscommon	-5.7	16.1	27.7	9.5	11.7
Sligo	12.2	9.5	8.7	12.1	9.8
South Dublin	5.4	12.4	5.4	5.9	14.8
Tipperary JLC	7.7	15.0	12.8	8.0	17.9
Waterford	9.3	5.5	2.6	18.1	2.9
Westmeath	4.6	10.9	10.6	12.1	19.1
Wexford	2.4	0.2	14.0	19.8	15.5
Wicklow	8.1	9.5	14.2	15.7	13.9
<i>Total County:</i>	<i>12.1</i>	<i>8.6</i>	<i>9.3</i>	<i>11.7</i>	<i>12.1</i>
<b><i>City Councils:</i></b>					
Cork	7.3	16.4	12.3	9.2	7.2
Dublin	6.3	11.1	6.2	4.7	5.5
Limerick	12.1	0.9	30.7	1.1	4.9
Waterford	6.4	8.3	3.3	16.9	25.3
<i>Total City:</i>	<i>6.8</i>	<i>11.2</i>	<i>8.2</i>	<i>5.8</i>	<i>6.6</i>
<b>All Authorities</b>	<b>10.7</b>	<b>9.3</b>	<b>9</b>	<b>10.1</b>	<b>10.6</b>

Range 2008 = -5.7% to +44.5%

Table 2.2: Estimated Total Library Expenditure per capita, 2004-2008.

€

Library authority:	2008	2007	2006	2005	2004
<b><i>County Councils:</i></b>					
Carlow	25.87	23.95	24.86	24.01	22.32
Cavan	30.56	30.18	31.11	24.41	20.34
Clare	31.93	30.06	30.72	28.91	27.67
Cork County	26.09	22.31	23.37	21.01	18.86
Donegal	24.81	24.70	25.08	22.76	17.19
Dún Laoghaire Rathdown	30.63	27.87	25.55	22.76	20.39
Fingal	38.47	32.65	37.55	34.95	31.86
Galway	18.57	17.79	17.67	16.95	14.96
Kerry	31.72	22.89	22.77	21.25	19.73
Kildare	26.61	25.62	27.85	25.11	23.10
Kilkenny	31.34	23.44	24.07	23.39	20.73
Laois	26.92	23.99	24.15	18.79	16.31
Leitrim	50.85	47.28	45.81	40.21	33.42
Limerick	33.59	23.24	22.32	20.38	19.03
Longford	37.35	35.63	35.31	31.95	28.87
Louth	20.69	19.89	20.69	19.57	17.33
Mayo	29.20	27.20	27.37	26.34	24.85
Meath	17.69	15.62	17.17	17.18	13.88
Monaghan	30.06	26.78	27.12	24.11	19.91
Offaly	33.04	23.04	20.51	19.51	18.25
Roscommon	29.20	30.97	29.16	22.83	20.84
Sligo	28.73	25.60	24.46	22.50	20.08
South Dublin	30.81	29.24	26.89	25.51	24.10
Tipperary JLC	24.71	22.94	21.25	18.84	17.46
Waterford County	26.87	24.60	25.46	24.82	21.02
Westmeath	26.22	25.06	24.95	22.55	20.12
Wexford	19.18	18.72	21.11	18.51	15.45
Wicklow	24.91	23.05	23.17	20.28	17.53
<i>Total County:</i>	27.73	24.75	25.04	22.91	20.51
<b><i>City Councils:</i></b>					
Cork	45.17	42.07	35.07	31.22	28.59
Dublin	47.36	44.54	40.92	38.53	36.80
Limerick	36.05	32.16	30.99	23.72	23.46
Waterford	37.66	35.39	33.51	32.44	27.75
<i>Total City:</i>	45.57	42.66	38.71	35.78	33.82
<b>All Authorities</b>	<b>30.78</b>	27.81	27.54	25.27	22.94

Range 2008: €17.69 to €50.85

The 2004-2006 figures are based on the 2002 Census returns whilst the 2007-2008 figures are based on the 2006 Census returns

Table 3: Estimated Local Authority Bookfund Expenditure, 2004-2008.

€

Library authority	2008	2007	2006	2005	2004
	Bookfund General	Bookfund General	Bookfund General	Bookfund General	Bookfund General
<b>County Councils:</b>					
Carlow	144,000	94,000	109,000	109,000	147,000
Cavan	130,000	130,000	123,720	143,720	143,720
Clare	284,800	266,000	335,000	335,000	305,100
Cork	1,103,400	1,085,100	1,021,800	985,800	1,050,000
Donegal	456,400	450,000	450,000	440,000	436,100
Dún Laoghaire Rathdown	874,600	726,000	557,000	457,000	328,400
Fingal	1,600,000	1,276,000	1,193,000	1,074,000	974,000
Galway	550,000	520,000	429,000	429,000	429,000
Kerry	430,000	400,000	365,000	330,000	300,000
Kildare	545,000	470,000	450,000	423,152	401,645
Kilkenny	226,000	224,000	209,000	203,000	183,000
Laois	219,000	188,000	186,000	171,000	160,000
Leitrim	95,000	95,000	80,200	65,200	65,000
Limerick	482,700	437,700	397,000	378,200	333,000
Longford	123,000	110,000	96,716	95,000	90,000
Louth	235,000	220,000	220,000	238,248	245,000
Mayo	499,200	480,000	484,010	484,007	384,000
Meath	275,000	250,000	220,000	220,000	200,000
Monaghan	175,000	175,000	170,000	165,000	133,318
Offaly	205,253	179,470	159,680	159,681	145,321
Roscommon	357,000	309,000	290,000	244,000	216,100
Sligo	245,000	195,000	165,000	148,000	114,000
South Dublin	1,000,000	940,000	920,000	830,000	750,000
Tipperary JLC	341,500	254,500	246,000	246,000	266,000
Waterford Co.	129,246	109,997	109,997	109,000	98,600
Westmeath	165,000	165,000	155,000	150,000	175,000
Wexford	362,000	367,000	347,000	342,000	327,000
Wicklow	400,000	373,000	313,000	293,000	266,000
<i>Total County:</i>	<i>11,653,099</i>	<i>10,489,767</i>	<i>9,802,123</i>	<i>9,268,008</i>	<i>8,666,304</i>
<b>City Councils:</b>					
Cork	440,000	430,500	422,100	350,000	325,000
Dublin	2,326,000	2,275,949	1,765,233	1,655,613	1,608,098
Limerick	170,400	148,250	144,850	134,299	104,500
Waterford	225,000	210,000	202,000	202,000	108,000
<i>Total City:</i>	<i>3,161,400</i>	<i>3,064,699</i>	<i>2,534,183</i>	<i>2,341,912</i>	<i>2,145,598</i>
<b>All Authorities</b>	<b>14,814,499</b>	<b>13,544,466</b>	<b>12,336,306</b>	<b>11,609,920</b>	<b>10,811,902</b>

2008 increase on 2007 = 9.3%

N.B.: Estimated additional (non-recurrent) expenditure on stock is given in Table 5

**Table 3.1: Estimated Bookfund Expenditure - Primary School Library Scheme Book Grant, 2004-2008.** €

<b>Library authority</b>	<b>2008</b>	<b>2007</b>	<b>2006</b>	<b>2005</b>	<b>2004</b>
<i><b>County Councils:</b></i>					
Carlow	28,000	26,112	25,637	18,625	18,625
Cavan	40,000	40,000	24,340	24,340	24,340
Clare	56,378	54,000	40,000	40,000	40,000
Cork	170,000	165,000	165,500	123,000	0
Donegal	83,000	80,000	78,700	58,500	60,000
Dún Laoghaire Rathdown	77,000	74,000	68,000	63,000	60,000
Fingal	124,000	124,000	107,000	76,000	76,000
Galway	100,000	80,000	72,000	72,000	72,000
Kerry	69,000	68,000	60,000	66,666	50,000
Kildare	106,994	106,994	106,994	71,848	68,000
Kilkenny	35,000	35,000	35,000	32,000	32,000
Laois	36,000	34,000	32,000	24,000	24,000
Leitrim	14,500	14,000	10,000	10,000	9,900
Limerick	61,300	61,300	60,630	46,300	46,300
Longford	22,000	21,000	18,284	15,400	14,000
Louth	60,000	60,000	60,000	58,306	35,000
Mayo	72,800	69,450	53,000	78,000	55,702
Meath	90,000	86,000	55,000	55,000	55,000
Monaghan	30,000	30,000	30,000	30,000	40,000
Offaly	40,000	40,000	28,979	28,979	28,135
Roscommon	51,000	29,000	29,000	22,000	23,100
Sligo	30,000	30,000	25,000	22,000	22,000
South Dublin	130,000	125,000	125,000	94,000	94,000
Tipperary JLC	79,000	77,190	56,900	56,900	56,433
Waterford	30,754	30,003	30,003	21,000	21,000
Westmeath	45,000	43,610	42,795	31,800	30,937
Wexford	80,000	75,000	65,000	55,000	50,000
Wicklow	65,000	65,000	63,000	48,000	48,000
<i>Total County:</i>	<i>1,826,726</i>	<i>1,743,659</i>	<i>1,567,762</i>	<i>1,342,664</i>	<i>1,154,472</i>
<i><b>City Councils:</b></i>					
Cork	64,500	64,300	50,000	93,317	52,000
Dublin	197,500	197,551	197,429	153,227	160,000
Limerick	33,000	30,000	29,000	20,000	20,000
Waterford	35,000	30,000	36,160	22,800	21,730
<i>Total City:</i>	<i>330,000</i>	<i>321,851</i>	<i>312,589</i>	<i>289,344</i>	<i>253,730</i>
<b>All Authorities</b>	<b>2,156,726</b>	<b>2,065,510</b>	<b>1,880,351</b>	<b>1,632,008</b>	<b>1,408,202</b>

2008 increase on 2007 = 4.4%



**Table 3.2: Estimated Total Bookfund Expenditure: Local Authority + Primary School Library Book Grant, 2004-2008.** €

<b>Library authority</b>	<b>2008</b>	<b>2007</b>	<b>2006</b>	<b>2005</b>	<b>2004</b>
<b><i>County Councils:</i></b>					
Carlow	172,000	120,112	134,637	127,625	165,625
Cavan	170,000	170,000	148,060	168,060	168,060
Clare	341,178	320,000	375,000	375,000	345,100
Cork	1,273,400	1,250,100	1,187,300	1,108,800	1,050,000
Donegal	539,400	530,000	528,700	498,500	496,100
Dún Laoghaire Rathdown	951,600	800,000	625,000	520,000	388,400
Fingal	1,724,000	1,400,000	1,300,000	1,150,000	1,050,000
Galway	650,000	600,000	501,000	501,000	501,000
Kerry	499,000	468,000	425,000	396,666	350,000
Kildare	651,994	576,994	556,994	495,000	469,645
Kilkenny	261,000	259,000	244,000	235,000	215,000
Laois	255,000	222,000	218,000	195,000	184,000
Leitrim	109,500	109,000	90,200	75,200	74,900
Limerick	544,000	499,000	457,630	424,500	379,300
Longford	145,000	131,000	115,000	110,400	104,000
Louth	295,000	280,000	280,000	296,554	280,000
Mayo	572,000	549,450	537,010	562,007	439,702
Meath	365,000	336,000	275,000	275,000	255,000
Monaghan	205,000	205,000	200,000	195,000	173,318
Offaly	245,253	219,470	188,659	188,660	173,456
Roscommon	408,000	338,000	319,000	266,000	239,200
Sligo	275,000	225,000	190,000	170,000	136,000
South Dublin	1,130,000	1,065,000	1,045,000	924,000	844,000
Tipperary JLC	420,500	331,690	302,900	302,900	322,433
Waterford	160,000	140,000	140,000	130,000	119,600
Westmeath	210,000	208,610	197,795	181,800	205,937
Wexford	442,000	442,000	412,000	397,000	377,000
Wicklow	465,000	438,000	376,000	341,000	314,000
<i>Total County:</i>	<i>13,479,825</i>	<i>12,233,426</i>	<i>11,369,885</i>	<i>10,610,672</i>	<i>9,820,776</i>
<b><i>City Councils:</i></b>					
Cork	504,500	494,800	472,100	443,317	377,000
Dublin	2,523,500	2,473,500	1,962,662	1,808,840	1,768,098
Limerick	203,400	178,250	173,850	154,299	124,500
Waterford	260,000	240,000	238,160	224,800	129,730
<i>Total City:</i>	<i>3,491,400</i>	<i>3,386,550</i>	<i>2,846,772</i>	<i>2,631,256</i>	<i>2,399,328</i>
<b>All Authorities</b>	<b>16,971,225</b>	<b>15,619,976</b>	<b>14,216,657</b>	<b>13,241,928</b>	<b>12,220,104</b>

2008 increase on 2007 = 8.6%

**Table 3.3: Estimated Bookfund Expenditure per capita, 2004-2008 (Excluding Primary School Library Scheme Book Grant)** €

Library authority	2008	2007	2006	2005	2004
<b>County Councils:</b>					
Carlow	2.86	1.87	2.37	2.37	3.19
Cavan	2.03	2.03	2.19	2.54	2.54
Clare	2.57	2.40	3.24	3.24	2.95
Cork	3.05	3.00	3.15	3.04	3.23
Donegal	3.10	3.06	3.27	3.20	3.17
Dún Laoghaire Rathdown	4.51	3.74	2.90	2.38	1.71
Fingal	6.67	5.32	6.07	5.47	4.96
Galway	2.37	2.24	2.05	2.05	2.05
Kerry	3.08	2.86	2.75	2.49	2.26
Kildare	2.92	2.52	2.74	2.58	2.45
Kilkenny	2.58	2.56	2.60	2.53	2.28
Laois	3.27	2.80	3.16	2.91	2.72
Leitrim	3.28	3.28	3.11	2.53	2.52
Limerick	3.67	3.33	3.27	3.12	2.75
Longford	3.58	3.20	3.11	3.06	2.90
Louth	2.11	1.98	2.16	2.34	2.41
Mayo	4.03	3.88	4.12	4.12	3.27
Meath	1.69	1.54	1.64	1.64	1.49
Monaghan	3.13	3.13	3.23	3.14	2.53
Offaly	2.90	2.53	2.51	2.51	2.28
Roscommon	6.07	5.26	5.39	4.54	4.02
Sligo	4.02	3.20	2.84	2.54	1.96
South Dublin	4.05	3.81	3.85	3.48	3.14
Tipperary JLC	2.29	1.71	1.76	1.76	1.90
Waterford	2.08	1.77	1.93	1.91	1.73
Westmeath	2.08	2.08	2.16	2.09	2.44
Wexford	2.75	2.79	2.98	2.93	2.80
Wicklow	3.17	2.96	2.73	2.56	2.32
<i>Total County:</i>	3.31	2.98	3.06	2.90	2.71
<b>City Councils:</b>					
Cork	3.68	3.60	3.43	2.84	2.64
Dublin	4.59	4.50	3.56	3.34	3.24
Limerick	3.24	2.82	2.68	2.49	1.93
Waterford	4.92	4.59	4.53	4.53	2.42
<i>Total City:</i>	4.37	4.23	3.53	3.26	2.99
<b>All Authorities</b>	<b>3.49</b>	3.20	3.15	2.96	2.76

Range 2008: €1.69 - €6.67

See also Chart 4

Shaded cells indicate those authorities which have met the revised minimum target expenditure on stock of €3.27 per head of resident population.

The 2004-2006 figures are based on the 2002 Census returns whilst the 2007-2008 figures are based on the 2006 Census returns

**Table 3.4: Estimated bookfund expenditure per capita, 2004-2008 including Primary School Library Scheme Book Grant) €**

<b>Library authority</b>	<b>2008</b>	<b>2007</b>	<b>2006</b>	<b>2005</b>	<b>2004</b>
<b><i>County Councils:</i></b>					
Carlow	3.42	2.39	2.93	2.77	3.60
Cavan	2.66	2.66	2.62	2.97	2.97
Clare	3.08	2.88	3.63	3.63	3.34
Cork	3.52	3.45	3.66	3.41	3.23
Donegal	3.66	3.60	3.84	3.62	3.61
Dún Laoghaire Rathdown	4.90	4.12	3.26	2.71	2.03
Fingal	7.18	5.83	6.62	5.86	5.35
Galway	2.81	2.59	2.40	2.40	2.40
Kerry	3.57	3.35	3.21	2.99	2.64
Kildare	3.50	3.10	3.40	3.02	2.86
Kilkenny	2.98	2.96	3.04	2.93	2.68
Laois	3.80	3.31	3.71	3.32	3.13
Leitrim	3.78	3.77	3.50	2.91	2.90
Limerick	4.14	3.79	3.77	3.50	3.13
Longford	4.22	3.81	3.70	3.55	3.35
Louth	2.65	2.52	2.75	2.91	2.75
Mayo	4.62	4.44	4.57	4.79	3.74
Meath	2.24	2.06	2.05	2.05	1.90
Monaghan	3.66	3.66	3.80	3.71	3.30
Offaly	3.46	3.10	2.96	2.96	2.72
Roscommon	6.94	5.75	5.93	4.95	4.45
Sligo	4.52	3.69	3.26	2.92	2.34
South Dublin	4.58	4.31	4.38	3.87	3.53
Tipperary JLC	2.82	2.22	2.16	2.16	2.30
Waterford	2.57	2.25	2.46	2.28	2.10
Westmeath	2.65	2.63	2.75	2.53	2.87
Wexford	3.35	3.35	3.53	3.40	3.23
Wicklow	3.68	3.47	3.28	2.97	2.74
<i>Total County:</i>	3.83	3.48	3.55	3.32	3.07
<b><i>City Councils:</i></b>					
Cork	4.22	4.14	3.84	3.60	3.06
Dublin	4.99	4.89	3.96	3.65	3.57
Limerick	3.87	3.39	3.22	2.86	2.30
Waterford	5.68	5.25	5.34	5.04	2.91
<i>Total City:</i>	4.82	4.68	3.97	3.67	3.34
<b>All Authorities</b>	<b>4.00</b>	3.68	3.63	3.38	3.12

Range 2008 = €2.24 - €7.18

The 2004-2006 figures are based on the 2002 Census returns whilst the 2007-2008 figures are based on the 2006 Census returns

**Table 3.5: Estimated Total Book Fund as Percentage of Overall Library Expenditure, 2004-2008.**

<b>Library authority</b>	<b>2008</b>	<b>2007</b>	<b>2006</b>	<b>2005</b>	<b>2004</b>
<b><i>County Councils:</i></b>					
Carlow	13.2	10.0	11.8	11.6	16.1
Cavan	8.7	8.8	8.4	12.2	14.6
Clare	9.6	9.6	11.8	12.6	12.1
Cork	13.5	15.5	15.6	16.2	17.1
Donegal	14.8	14.6	15.3	15.9	21.0
Dún Laoghaire Rathdown	16.0	14.8	12.8	11.9	9.9
Fingal	18.7	17.9	17.6	16.8	16.8
Galway	15.1	14.6	13.6	14.1	16.0
Kerry	11.3	14.6	14.1	14.1	13.4
Kildare	13.1	12.1	12.2	12.0	12.4
Kilkenny	9.5	12.6	12.6	12.5	12.9
Laois	14.1	13.8	15.4	17.7	19.2
Leitrim	7.4	8.0	7.6	7.2	8.7
Limerick	12.3	16.3	16.9	17.2	16.4
Longford	11.3	10.7	10.5	11.1	11.6
Louth	12.8	12.7	13.3	14.9	15.9
Mayo	15.8	16.3	16.7	18.2	15.1
Meath	12.7	13.2	11.5	11.9	13.7
Monaghan	12.2	13.7	14.0	15.4	16.5
Offaly	10.5	13.4	14.5	15.2	14.9
Roscommon	23.8	18.6	20.3	21.7	21.3
Sligo	15.7	14.4	13.3	13.0	11.6
South Dublin	14.9	14.8	16.3	15.2	14.7
Tipperary JLC	11.4	9.7	10.2	11.5	13.2
Waterford	9.6	9.1	9.7	9.2	10.0
Westmeath	10.1	10.5	11.0	11.2	14.2
Wexford	17.5	17.9	16.7	18.4	20.9
Wicklow	14.8	15.1	14.2	14.7	15.6
<i>Total County:</i>	<i>13.8</i>	<i>14.1</i>	<i>14.2</i>	<i>14.5</i>	<i>15.0</i>
<b><i>City Councils:</i></b>					
Cork	9.4	9.8	10.9	11.5	10.7
Dublin	10.5	11	9.7	9.5	9.7
Limerick	10.7	10.5	10.4	12.0	9.8
Waterford	15.1	14.8	15.9	15.5	10.5
<i>Total City:</i>	<i>10.6</i>	<i>11</i>	<i>10.3</i>	<i>10.2</i>	<i>9.9</i>
<b>All Authorities</b>	<b>13.0</b>	<b>13.2</b>	<b>13.2</b>	<b>13.4</b>	<b>13.6</b>

Range 2008 = + 7.4% to 23.8%

Table 4: Estimated Local Authority Expenditure - ALL Programmes, 2004-2008.

€

Library authority	2008	2007	2006	2005	2004
<b>County Councils:</b>					
Carlow	51,548,600	47,860,148	43,007,300	40,158,055	33,546,000
Cavan	73,211,588	71,064,372	62,324,716	58,273,998	53,309,358
Clare	116,079,679	110,780,804	101,005,269	93,174,456	86,156,195
Cork	360,827,214	319,241,080	296,970,391	268,178,085	256,058,620
Donegal	178,586,366	164,812,428	150,162,030	136,542,900	124,706,000
Dún Laoghaire Rathdown	227,114,400	220,210,500	196,445,300	172,054,000	153,678,100
Fingal	257,400,000	230,160,000	214,460,200	193,287,200	189,068,100
Galway	238,458,602	240,128,940	211,209,388	209,382,037	202,481,623
Kerry	141,611,000	129,801,000	112,493,200	108,177,778	101,938,488
Kildare	135,000,000	127,142,534	115,517,882	104,346,934	97,842,110
Kilkenny	77,103,200	66,698,722	63,991,500	57,527,000	55,967,400
Laois	73,166,000	67,921,335	59,908,000	54,617,000	50,364,382
Leitrim	46,305,638	42,917,533	41,332,463	37,049,527	35,979,023
Limerick	126,584,064	117,969,307	105,763,266	103,364,781	98,743,798
Longford	52,603,600	48,914,800	46,186,000	43,092,500	39,546,700
Louth	72,379,550	67,662,950	64,706,100	56,088,300	46,288,855
Mayo	152,653,711	141,047,031	130,347,247	119,354,303	113,739,608
Meath	120,026,440	106,429,442	95,745,678	87,414,978	78,911,710
Monaghan	67,930,583	67,253,461	59,711,205	55,511,059	48,422,732
Offaly	62,708,811	54,452,902	49,573,947	46,801,618	41,789,046
Roscommon	79,735,000	68,130,000	62,539,400	56,764,000	52,691,200
Sligo	63,044,345	56,767,813	50,843,800	46,060,510	43,096,631
South Dublin	284,279,400	308,318,200	268,349,200	223,497,900	205,131,510
Tipperary*	166,072,476	155,668,884	143,020,640	133,831,453	117,423,219
Waterford	76,063,723	72,351,159	63,864,103	57,901,900	51,436,300
Westmeath	82,530,916	71,193,388	59,736,330	54,900,846	51,090,092
Wexford	116,293,756	105,617,877	98,366,108	89,304,542	84,032,216
Wicklow	106,953,381	96,321,923	83,669,686	70,724,344	63,192,089
<i>Total County:</i>	<i>3,606,272,043</i>	<i>3,376,838,533</i>	<i>3,051,250,349</i>	<i>2,777,382,004</i>	<i>2,576,631,105</i>
<b>City Councils:</b>					
Cork	198,284,500	181,101,600	164,108,200	156,304,200	147,261,000
Dublin	914,516,609	847,137,522	787,737,799	710,064,351	656,374,935
Limerick	87,820,796	79,535,391	73,873,311	67,810,324	63,585,285
Waterford	62,275,449	56,459,489	51,429,262	47,021,717	43,529,719
<i>Total City:</i>	<i>1,262,897,354</i>	<i>1,164,234,002</i>	<i>1,077,148,572</i>	<i>981,200,592</i>	<i>910,750,939</i>
<b>All Authorities</b>	<b>4,869,169,397</b>	<b>4,541,072,535</b>	<b>4,128,398,921</b>	<b>3,758,582,596</b>	<b>3,487,382,044</b>

2008 increase on 2007 = 7.2%

\* Combined budget of North Tipperary County Council and South Tipperary County Council

**Table 4.1: Estimated Expenditure on Library Services as a Percentage of Total Local Authority expenditure (ALL Programmes), 2004-2008.**

%

<b>Library authority</b>	<b>2008</b>	<b>2007</b>	<b>2006</b>	<b>2005</b>	<b>2004</b>
<i>County Councils:</i>					
Carlow	2.5	2.5	2.7	2.8	3.1
Cavan	2.7	2.7	2.8	2.4	2.2
Clare	3.1	3.0	3.1	3.2	3.3
Cork	2.6	2.5	2.6	2.5	2.4
Donegal	2.0	2.2	2.3	2.3	1.9
Dún Laoghaire Rathdown	2.6	2.5	2.5	2.5	2.5
Fingal	3.6	3.4	3.4	3.6	3.3
Galway	1.8	1.7	1.7	1.7	1.5
Kerry	3.1	2.5	2.7	2.6	2.6
Kildare	3.7	3.8	4.0	3.9	3.9
Kilkenny	3.6	3.1	3.0	3.3	3.0
Laois	2.5	2.4	2.4	2.0	1.9
Leitrim	3.2	3.2	2.9	2.8	2.4
Limerick	3.5	2.6	2.6	2.4	2.3
Longford	2.4	2.5	2.4	2.3	2.3
Louth	3.2	3.3	3.3	3.6	3.8
Mayo	2.4	2.4	2.5	2.6	2.6
Meath	2.4	2.4	2.5	2.6	2.4
Monaghan	2.5	2.2	2.4	2.3	2.2
Offaly	3.7	3.0	2.6	2.7	2.8
Roscommon	2.2	2.7	2.5	2.2	2.1
Sligo	2.8	2.7	2.8	2.8	2.7
South Dublin	2.7	2.3	2.4	2.7	2.8
Tipperary*	2.2	2.2	2.1	2.0	2.1
Waterford	2.2	2.1	2.3	2.4	2.3
Westmeath	2.5	2.8	3.0	3.0	2.8
Wexford	2.2	2.3	2.5	2.4	2.1
Wicklow	2.9	3.0	3.2	3.3	3.2
<i>Total County:</i>	2.7	2.6	2.6	2.6	2.5
<i>City Councils:</i>					
Cork	2.7	2.8	2.6	2.5	2.4
Dublin	2.6	2.7	2.6	2.7	2.8
Limerick	2.2	2.1	2.3	1.9	2.0
Waterford	2.8	2.9	2.9	3.1	2.8
<i>Total City:</i>	2.6	2.7	2.6	2.6	2.7
<b>All Authorities</b>	<b>2.7</b>	<b>2.6</b>	<b>2.6</b>	<b>2.6</b>	<b>2.6</b>

Range 2008 = +1.8% to +3.7%

\* Combined budget of North Tipperary County Council and South Tipperary County Council

**Table 5: Estimated capital expenditure on library services as notified to An Chomhairle by library authorities, 2008**

€

<b>Authority</b>	<b>Automation</b>	<b>Buildings</b>	<b>Stock</b>	<b>Vehicles</b>	<b>Other</b>	<b>TOTAL</b>
Carlow	0	200,000	0	100,000	150,000	<b>450,000</b>
Cavan	0	0	0	380,000	0	<b>380,000</b>
Fingal	0	350,000	0	0	0	<b>350,000</b>
Galway	0	250,000	0	0	0	<b>250,000</b>
Kerry	0	0	0	100,000	0	<b>100,000</b>
Laois	0	0	140,000	0	0	<b>140,000</b>
Longford	50,000	600,000	0	0	0	<b>650,000</b>
Louth	0	600,000	0	0	0	<b>600,000</b>
Monaghan	0	900,000	116,000	93,000	0	<b>1,109,000</b>
Offaly	0	500,000	0	0	10,200	<b>510,200</b>
Roscommon	10,000	50,000	0	0	75,000	<b>135,000</b>
South Dublin	0	4,000,000	0	200,000	0	<b>4,200,000</b>
Wexford	0	0	200,000	0	0	<b>200,000</b>
<b>TOTAL</b>	<b>60,000</b>	<b>7,450,000</b>	<b>456,000</b>	<b>873,000</b>	<b>235,200</b>	<b>9,074,200</b>

Note: a number of authorities indicated planned capital projects for 2008 but were not able to supply financial data relating to them. This table gives only a partial picture of estimated expenditure on capital projects.



## ***Appendix 1: Notes on the returns***

**Cavan: 2006:** *Other Expenditure* includes €60,674 for a new archives service.

**Dublin City:** Estimates for 2003 to 2005 include an apportioned administrative charge from Dublin City Council. The charges are €528,550 (2003); €527,520 (2004) ; €527,000 (2005)

## ***Appendix 2: Guidance notes***

Data relating to local authority estimates of expenditure on public library services is collected on an annual basis by An Chomhairle Leabharlanna by means of a questionnaire. Authorities are requested to supply a breakdown of proposed library budgets under the following headings:

***Operation and Maintenance*** - includes staff salaries, general day to day running costs (heating, lighting, etc.) and general property management.

***Provision and improvement*** - includes items such as automation.

***Bookfund*** - Planned expenditure on stock acquisition is further categorized under the following sub-heads:

- *General stock*
- *Primary School Library Scheme* The Department of Education and Science allocates a per capita grant scheme for the provision of books and other items of stock to primary school students. This grant allocation is given to local authorities to administer through the public library service.
- *Other* - includes serials, non-book items, etc.

***Contribution to An Chomhairle Leabharlanna*** - Annual assessment made on local authorities by the Minister for the Environment, Heritage and Local Government for the purpose of funding An Chomhairle Leabharlanna.

***Loans*** – Subsidy amounts payable by the Department of the Environment, Heritage and Local Government in relation to leases and pre-1988 non-Exchequer loans at a rate of 50%.

***Other*** - Items of expenditure not covered by the above.

Variations in accounting and reporting procedures have made standardization of returns difficult. For example, some authorities include expenditure on serials under *Operation and Maintenance*, others include them under *Bookstock*. Some authorities do not include their contribution to An Chomhairle Leabharlanna in the library budget. Whereas attempts have been made to present this information in a consistent fashion, the data published in this report is as supplied by the local authorities. In order to achieve this, An Chomhairle has included data from other sources. Any major amendments are clearly indicated in the text.

On occasion authorities amend their returns retrospectively. These changes are noted in the relevant sections. Such retrospective amendments also affect total and sub-totals and any derived data.

All financial data is given in Euros.

2006 Census figures were used to calculate per capita expenditure for the 2007 estimates.

2002 Census figures were used to calculate per capita expenditure for previous years.

### *Census Appendix 3: Population statistics*

Authority	2002 Census	2006 Census	% change
<b>County</b>			
Carlow	46,014	50,349	9.4
Cavan	56,546	64,003	13.2
Clare	103,277	110,950	7.4
Cork	324,767	361,877	11.4
Donegal	137,575	147,264	7.0
Dún Laoghaire-Rathdown	191,792	194,038	1.2
Fingal	196,413	239,992	22.2
Galway	209,077	231,670	10.8
Kerry	132,527	139,835	5.5
Kildare	163,944	186,335	13.7
Kilkenny	80,339	87,558	9.0
Laois	58,774	67,059	14.1
Leitrim	25,799	28,950	12.2
Limerick	121,281	131,516	8.4
Longford	31,068	34,391	10.7
Louth	101,821	111,267	9.3
Mayo	117,446	123,839	5.4
Meath	134,005	162,831	21.5
Monaghan	52,593	55,997	6.5
Offaly	63,663	70,868	11.3
Roscommon	53,774	58,768	9.3
Sligo	58,200	60,894	4.6
South Dublin	238,835	246,935	3.4
Tipperary JLC	140,131	149,244	6.5
Waterford	56,952	62,213	9.2
Westmeath	71,858	79,346	10.4
Wexford	116,596	131,749	13.0
Wicklow	114,676	126,194	10.0
<i>Total County</i>	<i>3,199,743</i>	<i>3,515,932</i>	<i>9.9</i>
<b>City Councils:</b>			
Cork	123,062	119,418	-3.0
Dublin	495,781	506,211	2.1
Limerick	54,023	52,539	-2.7
Waterford	44,594	45,748	2.6
<i>Total City Councils:</i>	<i>717,460</i>	<i>723,916</i>	<i>0.9</i>
<b>TOTAL</b>	<b>3,917,203</b>	<b>4,239,848</b>	<b>8.2</b>