



**Public Library  
Authorities  
ANNUAL BUDGETS  
2009**

**AN CHOMHAIRLE LEABHARLANNA  
THE LIBRARY COUNCIL**

**AN CHOMHAIRLE LEABHARLANNA**  
**THE LIBRARY COUNCIL**

53 & 54 Upper Mount Street  
Dublin 2  
Ireland

*Telephone:* +353 (0)1-678 4900  
*Fax:* +353 (0)1-676 6721  
*E-mail:* [info@librarycouncil.ie](mailto:info@librarycouncil.ie)  
*Web site:* [www.librarycouncil.ie](http://www.librarycouncil.ie)

An Chomhairle Leabharlanna was established by the *Public Libraries Act 1947*.

The functions of the Council, as outlined in the *Local Government Act, 2001* are:

- to provide advice and assistance to local authorities in relation to the improvement of the public library service
- to make such recommendations to the Minister in relation to the public library service as it sees fit
- to maintain and operate the central library established under Section 2 of the *Public Libraries Act, 1947 (No. 40 of 1947)*
- to promote and facilitate library co-operation

Statistical series issued by An Chomhairle Leabharlanna:

*Public Library Authorities Annual Budgets*  
*Public Library Authority Statistics - Actuals.*

Statistical data on Irish public libraries also appears in:  
*Public Library Statistics – Actuals & Estimates.* -  
London: CIPFA, (Annual)

*Cover: Composite photograph of Westmeath County Council's Civic Offices and Library, Mullingar which opened in June 2009.*

*For more details go to:*

<http://www.librarybuildings.ie/library.aspx?ID=160>

## CONTENTS

<i>Introdoction</i>	1-2
<i>Commentary</i>	3-5
• Total local authority operational expenditure on public library services	3
• Stock fund	3
• <i>Branching Out</i> stock fund targets	5
<i>Charts</i>	
1 Budgeted expenditure on library services, 1999-2009	3
2 Budgeted stock fund expenditure, 2005-2009	4
3 Comparison of per capita expenditure on stock (excluding school grant), 2005 and 2009	4
<i>Summary tables</i>	
1 Budgeted stock expenditure, 2005-2009	5
2 Budgeted expenditure, 2005-2009	5
<i>Tables</i>	
1 Public library authority budgets, 2009	6
2 Total budgeted operational library expenditure, 2005-2009	7
2.1 Percentage change in budgeted library expenditure on previous year	8
2.2 Total budgeted operational library expenditure per capita, 2005-2009	9
3 Budgeted local authority stock expenditure, 2005-2009	10
3.1 Budgeted stock expenditure - Primary School Library Scheme book grant, 2005-2009	11
3.2 Total budgeted total stock fund expenditure: local authority + Primary School Library Grant, 2005-2009	12
3.3 Budgeted stock fund expenditure per capita, 2005-2009 - excluding Primary School Library Scheme book grant	13
3.4 Budgeted stock fund expenditure per capita, 2005-2009 - including Primary School Library Scheme book grant	14
3.5 Budgeted stock fund as a percentage of overall library expenditure, 2005-2009.	15
4 Budgeted local authority expenditure - ALL programmes, 2005-2009	16
4.1 Budgeted expenditure on library services as a percentage of total local authority expenditure, 2005-2009.	17
5 Budgeted Capital Expenditure, 2009	18
<i>Appendix 1: Notes on the returns</i>	19
<i>Appendix 2: Population statistics, 2002 and 2006</i>	20

## Introduction

An Chomhairle Leabharlanna is pleased to publish this summary of the twenty second national annual statistical survey of public library authority budgeted expenditure, for the year **2009** based on the returns provided by all 32 library authorities.

The implementation of the new costing of services model developed by the Department of the Environment, Heritage & Local Government has seen a change from the Programme Group structure to that of a Divisional and Services structure. The new structure apportions service support costs from Central Management Services to the other Divisions, including libraries.

These service support costs (SSC) now form part of the library services budget.

For this year it has been decided to partition the returns into operational costs (excluding SSC) and total costs (including SSC) to facilitate comparisons with previous years. Service support costs will be fully integrated into data over time.

Other changes have influenced the content and layout of the *Public Libraries Annual Budgets, 2009*. The Department of Education & Science's grant towards the primary school library scheme has been discontinued for this year.

The figures, as published here, may be subject to further reductions given the current economic climate.

Any revisions will be updated on the electronic version which is available on [www.librarycouncil.ie](http://www.librarycouncil.ie).

The main features of the survey are:

- total public library operational spending in Ireland is set to **decrease** by **2.4%** over 2008 to **€124.3 million**.
- expenditure per head of population on public library services will **decrease** from **€30.05** in 2008 to **€29.32**.
- **twenty three** library authorities plan to **decrease** their budgeted operational spending on public library services; **one** will spend the **same** and the remaining **eight** have **increased** expenditure.
- local authority expenditure on library **stock** is set to **decrease** by **11%** from the 2008 figure of **€15.1 million** to **€13.5 million**.
- **seven** authorities will **increase** their spending on **stock**, **three** have allocated the **same** amount as for 2007, and **twenty two** plan to **reduce** expenditure.
- local authority expenditure on **stock** now stands at **€3.17** per capita **down** from **€3.56** in 2008..

The **2.4% decrease** in operational expenditure takes place in the context of local authority recurrent expenditure on all services, including libraries, being set to **rise** by **0.4%** to a total of **€4,890 million** in 2009.

#### ***Branching Out advances: 1999-2009***

Comparing the level of investment to that of 1999, which was the first year of the *Branching Out programme*, reveals that:

- public library authority expenditure on services has **increased** by **145%** from **€51 million** to **€124.3 million**.
- this represents a **rise** in expenditure per head of population from **€13.99** to **€29.32**
- local authority expenditure on **stock** has **increased** by **146%** from **€5,477,515** to **€13,456,713**
- this represents an **increase** in expenditure per head of population from **€1.51** to **€3.17**.

**Seven** authorities will meet or **exceed** the target set by the *Branching Out – Future Directions* of **€3.77** per head of resident population. Budgeted expenditure on stock in the remaining **twenty-five** authorities will fall **below** that target with **four** spending between **€3.00** and **€3.76**, **fifteen** spending between **€2.00** and **€2.99**, **four** between **€1.00** and **€1.99** and **two** spending less than **€1.00**.

An Chomhairle welcomes and encourages further investment by local authorities in library services, particularly in these difficult times when learning services, ICT usage and reading choices provide a positive support to communities and individuals.

An Chomhairle wishes to acknowledge the combined efforts of the Minister, his officials, the Chairs, members, County and City Managers County and City Librarians and staff of library authorities in enhancing existing services while planning new growth.

An Chomhairle Leabharlanna is committed to providing accurate, comprehensive and timely information on the public library service in Ireland and trusts that this publication is a further contribution to that end.

We are indebted to the public library authorities and the Departments of the Environment, Heritage and Local Government and of Education and Science respectively for their assistance in compiling the statistical data.

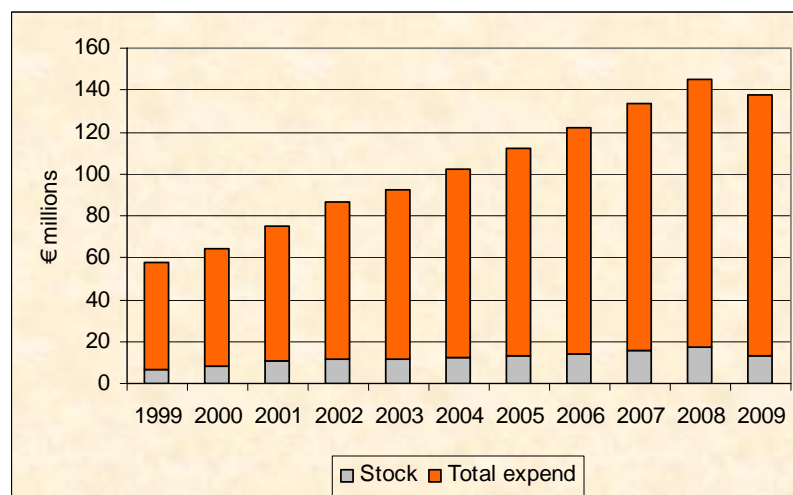
**Norma McDermott**  
**Director**

## Commentary

### Total local authority operational expenditure on public libraries

Local authorities have estimated that they will spend **€124,303,426** from their revenue budgets on public library services in 2009). This represents a **decrease** of **2.4%** on the 2008 figure of **€127,407,269**.

With the inclusion of service support costs, budgeted expenditure for 2009 rises to €156.5 million.



**Chart 1: Budgeted expenditure on library services, 1999-2009**

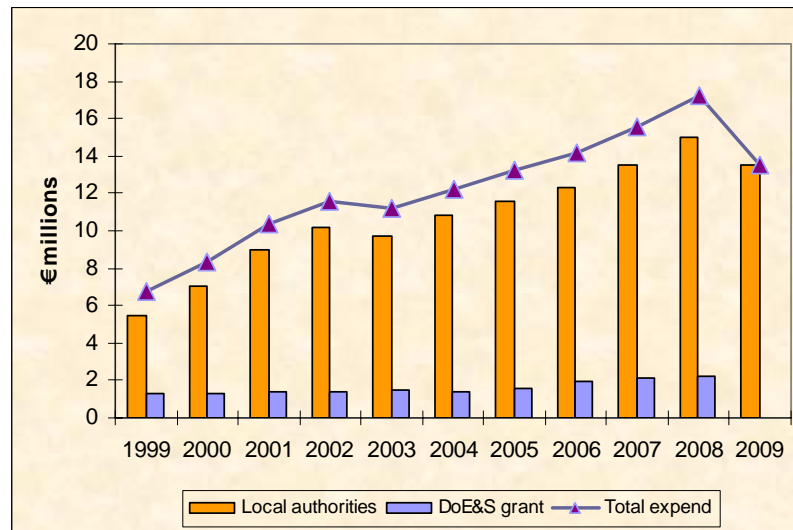
Average expenditure per head of population has **decreased** from **€30.05** in 2008 to **€29.32** in 2009. In 1999, the first year of the *Branching Out* programme, this figure stood at **€13.99**.

Per capita expenditure for 2009 ranges from **€16.27** to **€49.18**.

Library budgets have **fallen** by **2.4%** in the last year compared to an overall **increase** in local authority budgets of **0.4%** over 2008.

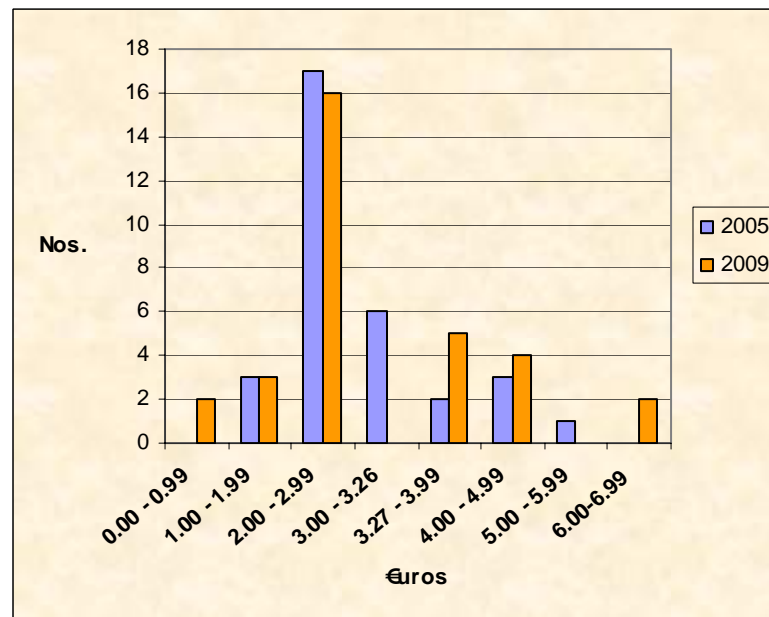
### Stock fund

Local authority stock (books, serials, multimedia materials) fund in 2009 is estimated at **€13,456,713** - this represents a **decrease** of **11%** on 2008.



**Chart 2: Budgeted stock fund expenditure, 1999-2009**

Seven authorities have allocated **additional** stock funds over and above those for 2008. **Three** authorities plan to spend substantially the **same** on stock in 2009 as in 2008 and **twenty-two** plan to spend **less** on stock.



**Chart 3: Comparison of per capita expenditure on stock (excluding school grant) between 2005 and 2009 (€).**

### Stock fund target

**Seven** authorities will meet or **exceed** the target set by the *Branching Out – Future Directions* of **€3.77** per head of resident population. Budgeted expenditure on stock in the remaining **twenty-five** authorities will **fall below** that target with **four** spending **between €300 and €3.76**, **fifteen** spending **between €2.00 and €2.99**, **four** **between €1.00 and €1.99** and **two** spending **less than €1.00** – see *Charts 5 and 6*.

Expenditure on stock as a percentage of total expenditure has **fallen to 10.8%** compared with **13.6%** in 2008.

	2005	2006	2007	2008	2009	% change on 2005	% change on 2008
PLA Stock	11,609,920	12,336,306	13,544,466	15,112,399	13,456,713	+15.9	-11
Per head	2.96	3.15	3.20	3.56	3.17	+7.1	-11
Total stock *	13,241,928	14,216,657	15,619,976	17,269,125	13,456,713	+1.6	-22.1
Per head	3.38	3.63	3.68	4.07	3.17	-6.1	-22.1
% of total expend	13.4	13.2	13.2	13.6	10.8		

**Summary table 1: Budgeted stock expenditure, 2005-2009**

*\* includes primary school library grant, 2005-2008*

Year	Expenditure on Libraries	% Increase on Previous Year	Local Authority Expenditure All programmes	% Change on Previous Year	Expenditure on Libraries as % of Total Expend.
2009	124,303,426	-2.4	4,890,099,637	+0.4	2.5
2008	127,407,269	+ 8.1	4,869,169,397	+ 7.2	2.6
2007	117,891,091	+ 9.3	4,541,072,535	+ 10	2.6
2006	107,888,318	+ 9	4,128,398,921	+ 9.8	2.6
2005	98,975,804	+ 10.1	3,758,582,596	+ 7.8	2.6

**Summary table 2: Budgeted expenditure, 2005-2009.**

An Chomhairle Leabharlanna will continue to monitor this general shortfall and recommends that library authorities expand the stock budget to optimise reader development in an expanding and increasingly diverse population.

The general improvements in service and infrastructure have led to a growing demand for services. A higher level of commitment to the stock budget which is the lifeblood of any public library service is required if demand is to be met.

**Five** authorities plan to **increase** their percentage expenditure on libraries. A further **nine** have maintained the **same** percentage of expenditure as in 2008. **Eighteen** have **reduced** their percentage expenditure on libraries.

### Key to the following Tables:

Figures in **green** have been supplied by An Chomhairle Leabharlanna

Figures in **black** indicate an increase on the previous years' allocation

Figures in **blue** indicate no significant change on the previous years' allocation

Figures in **red** indicate a decrease on the previous years' allocation



Table 1: Public Library Authority Budgets, 2009.

€

Library authority	Operation & maintenance *	Total stock fund	Contribution to AnCL	Loan charges	Other	Operational Sub-Total	Service support costs	TOTAL budget
<b>County Councils</b>								
Carlow	1,192,337	109,000	14,643	0	0	1,315,980	500,491	1,816,471
Cavan	1,410,452	131,000	20,100	220,130	11,835	1,793,517	387,921	2,181,438
Clare	3,007,000	280,000	39,000	23,000	114,514	3,463,514	822,038	4,285,552
Cork	7,020,781	1,261,170	111,600	0	113,000	8,506,551	1,340,165	9,846,716
Donegal	2,849,763	440,000	42,830	0	30,000	3,362,593	**	3,362,593
Dún Laoghaire Rathdown	4,837,000	790,300	63,000	0	0	5,690,300	1,925,104	7,615,404
Fingal	7,307,900	1,500,000	74,000	0	0	8,881,900	3,981,300	12,863,200
Galway	3,615,334	100,000	54,000	0	0	3,769,334	907,409	4,676,743
Kerry	2,959,000	410,000	48,000	0	0	3,417,000	711,478	4,128,478
Kildare	4,014,288	545,000	64,000	220,000	0	4,843,288	1,096,300	5,939,588
Kilkenny	2,235,089	88,110	31,000	11,800	65,000	2,430,999	584,289	3,015,288
Laois	1,598,792	190,000	23,000	45,208	3,000	1,860,000	821,546	2,681,546
Leitrim	1,234,288	80,000	9,500	70,000	15,500	1,409,288	416,984	1,826,272
Limerick	2,260,212	438,700	48,000	47,500	0	2,794,412	1,279,577	4,073,989
Longford	1,169,000	119,300	13,310	0	30,000	1,331,610	482,181	1,813,791
Louth	1,920,553	195,000	32,359	88,100	113,351	2,349,363	717,818	3,067,181
Mayo	2,955,085	297,880	36,015	0	0	3,288,980	479,321	3,768,301
Meath	2,464,198	275,000	55,000	0	0	2,794,198	889,321	3,683,519
Monaghan	1,358,520	65,000	20,000	109,318	0	1,552,838	**	1,552,838
Offaly	1,201,996	245,253	25,000	0	0	1,472,249	777,095	2,249,344
Roscommon	1,082,600	385,000	21,000	0	213,000	1,701,600	765,500	2,467,100
Sligo	1,303,830	35,000	18,183	2,000	0	1,359,013	778,578	2,137,591
South Dublin	6,572,600	950,000	85,000	0	0	7,607,600	2,285,600	9,893,200
Tipperary JLC	3,040,081	300,000	0	290,139	0	3,630,220	**	3,630,220
Waterford	1,511,468	153,000	23,000	15,882	0	1,703,350	772,160	2,475,510
Westmeath	1,720,150	170,000	27,660	0	0	1,917,810	642,190	2,560,000
Wexford	2,516,778	362,000	44,200	0	0	2,922,978	711,680	3,634,658
Wicklow	2,619,458	320,000	45,000	108,000	0	3,092,458	29,740	3,122,198
<b>Total County:</b>	<b>76,978,553</b>	<b>10,235,713</b>	<b>1,088,400</b>	<b>1,251,077</b>	<b>709,200</b>	<b>90,262,943</b>	<b>24,105,786</b>	<b>114,368,729</b>
<b>City Councils</b>								
Cork	4,744,100	499,300	39,000	0	351,200	5,633,600	1,824,400	7,458,000
Dublin	20,918,942	2,376,000	183,150	0	1,415,982	24,894,074	5,677,362	30,571,436
Limerick	1,640,982	138,200	15,279	0	0	1,794,461	20,500	1,814,961
Waterford	1,497,544	207,500	13,304	0	0	1,718,348	571,328	2,289,676
<b>Total City:</b>	<b>28,801,568</b>	<b>3,221,000</b>	<b>250,733</b>	<b>0</b>	<b>1,767,182</b>	<b>34,040,483</b>	<b>8,093,590</b>	<b>42,134,073</b>
<b>All Authorities</b>	<b>105,780,121</b>	<b>13,456,713</b>	<b>1,339,133</b>	<b>1,251,077</b>	<b>2,476,382</b>	<b>124,303,426</b>	<b>32,199,376</b>	<b>156,502,802</b>

\* Includes Provision and Improvement of library services

Galway County Council provides a library service to the City on an agency basis.

Contribution to An Chomhairle:: the figures given do not include assessments on Galway City Council; North Tipperary County Council or South Tipperary County Council.

N.B.: Budgeted additional (non-recurrent) expenditure on stock is given in Table 5

Table 2: Total Budgeted Operational Library Expenditure.

€

Library authority	2009	2008	2007	2006	2005
<b>County Councils:</b>					
Carlow	1,315,980	1,302,450	1,206,000	1,144,137	1,104,794
Cavan	1,793,517	1,956,220	1,931,408	1,759,347	1,380,139
Clare	3,463,514	3,543,160	3,335,596	3,172,892	2,986,000
Cork	8,506,551	9,408,700	8,073,300	7,590,100	6,823,500
Donegal	3,362,593	3,653,800	3,637,600	3,449,700	3,130,800
Dún Laoghaire Rathdown	5,690,300	5,942,800	5,407,200	4,900,800	4,364,500
Fingal	8,881,900	9,232,900	7,836,700	7,374,500	6,864,700
Galway	3,769,334	4,302,757	4,121,938	3,694,000	3,543,000
Kerry	3,417,000	3,675,000	3,201,048	3,017,648	2,816,500
Kildare	4,843,288	4,959,023	4,774,160	4,566,283	4,117,201
Kilkenny	2,430,999	2,744,434	2,052,200	1,933,500	1,879,300
Laois	1,860,000	1,805,000	1,609,000	1,419,500	1,104,500
Leitrim	1,409,288	1,472,118	1,368,796	1,181,960	1,037,401
Limerick	2,794,412	2,943,934	3,056,423	2,707,303	2,471,934
Longford	1,331,610	1,284,600	1,225,278	1,097,000	992,700
Louth	2,349,363	2,301,600	2,213,100	2,106,690	1,992,754
Mayo	3,288,980	3,615,560	3,368,000	3,215,000	3,093,127
Meath	2,794,198	2,880,287	2,544,153	2,301,384	2,301,665
Monaghan	1,552,838	1,683,487	1,499,790	1,426,109	1,268,251
Offaly	1,472,249	1,529,498	1,633,136	1,305,568	1,242,377
Roscommon	1,701,600	1,716,000	1,820,000	1,567,800	1,227,540
Sligo	1,359,013	1,749,470	1,559,000	1,423,300	1,309,436
South Dublin	7,607,600	7,608,400	7,220,300	6,423,080	6,092,500
Tipperary JLC	3,630,220	3,687,206	3,423,278	2,978,031	2,640,639
Waterford	1,703,350	1,671,944	1,530,181	1,449,915	1,413,700
Westmeath	1,917,810	2,080,345	1,988,584	1,792,598	1,620,393
Wexford	2,922,978	2,526,658	2,466,447	2,461,304	2,158,237
Wicklow	3,092,458	3,143,637	2,908,888	2,656,562	2,325,937
<b>Total County:</b>	<b>90,262,943</b>	<b>94,420,988</b>	<b>87,011,504</b>	<b>80,116,011</b>	<b>73,303,525</b>
<b>City Councils:</b>					
Cork	5,633,600	5,393,600	5,024,500	4,316,000	3,842,117
Dublin	24,894,074	23,975,676	22,546,500	20,287,562	19,102,254
Limerick	1,794,461	1,894,027	1,689,592	1,674,283	1,281,236
Waterford	1,718,348	1,722,978	1,618,995	1,494,462	1,446,672
<b>Total City:</b>	<b>34,040,483</b>	<b>32,986,281</b>	<b>30,879,587</b>	<b>27,772,307</b>	<b>25,672,279</b>
<b>All Authorities</b>	<b>124,303,426</b>	<b>127,407,269</b>	<b>117,891,091</b>	<b>107,888,318</b>	<b>98,975,804</b>

2009 change on 2008 = -2.4%

**Table 2.1: Percentage Change in Budgeted Operational Library Expenditure on Previous Year.**

<b>Library authority</b>	<b>2009 on 2008</b>	<b>2008 on 2007</b>	<b>2007 on 2006</b>	<b>2006 on 2005</b>	<b>2005 on 2004</b>
<b><i>County Councils:</i></b>					
Carlow	1.0	8.0	5.4	3.6	7.6
Cavan	-8.3	1.3	9.8	27.5	20.0
Clare	-2.2	6.2	5.1	6.3	4.5
Cork	-9.6	16.5	6.4	11.2	11.4
Donegal	-8.0	0.4	5.4	10.2	32.4
Dún Laoghaire Rathdown	-4.2	9.9	10.3	12.3	11.6
Fingal	-3.8	17.8	6.3	7.4	9.7
Galway	-12.4	4.4	11.6	4.3	13.3
Kerry	-7.0	14.8	6.1	7.1	7.7
Kildare	-2.3	3.9	4.6	10.9	8.7
Kilkenny	-11.4	33.7	6.1	2.9	12.8
Laois	3.0	12.2	13.3	28.5	15.2
Leitrim	-4.3	7.5	15.8	13.9	20.3
Limerick	-5.1	-3.7	12.9	9.5	7.1
Longford	3.7	4.8	11.7	10.5	10.7
Louth	2.1	4.0	5.1	5.7	12.9
Mayo	-9.0	7.4	4.8	3.9	6.0
Meath	-3.0	13.2	10.5	4.3	23.7
Monaghan	-7.8	12.2	5.2	12.4	21.1
Offaly	-3.7	-6.3	25.1	5.1	6.9
Roscommon	-0.8	-5.7	16.1	27.7	9.5
Sligo	-22.3	12.2	9.5	8.7	12.1
South Dublin	0.0	5.4	12.4	5.4	5.9
Tipperary JLC	-1.5	7.7	15.0	12.8	8.0
Waterford	1.9	9.3	5.5	2.6	18.1
Westmeath	-7.8	4.6	10.9	10.6	12.1
Wexford	15.7	2.4	0.2	14.0	19.8
Wicklow	-1.6	8.1	9.5	14.2	15.7
<b><i>Total County:</i></b>	<b>-4.4</b>	<b>8.5</b>	<b>8.6</b>	<b>9.3</b>	<b>11.7</b>
<b><i>City Councils:</i></b>					
Cork	4.4	7.3	16.4	12.3	9.2
Dublin	3.8	6.3	11.1	6.2	4.7
Limerick	-5.3	12.1	0.9	30.7	1.1
Waterford	-0.3	6.4	8.3	3.3	16.9
<b><i>Total City:</i></b>	<b>3.2</b>	<b>6.8</b>	<b>11.2</b>	<b>8.2</b>	<b>5.8</b>
<b>All Authorities</b>	<b>-2.4</b>	<b>8.1</b>	<b>9.3</b>	<b>9</b>	<b>10.1</b>

**Table 2.2: Total Budgeted Operational Library Expenditure per capita. €**

<b>Library authority:</b>	<b>2009</b>	<b>2008</b>	<b>2007</b>	<b>2006</b>	<b>2005</b>
<b>County Councils:</b>					
Carlow	26.14	25.87	23.95	24.86	24.01
Cavan	28.02	30.56	30.18	31.11	24.41
Clare	31.22	31.93	30.06	30.72	28.91
Cork County	23.51	26	22.31	23.37	21.01
Donegal	22.83	24.81	24.70	25.08	22.76
Dún Laoghaire Rathdown	29.33	30.63	27.87	25.55	22.76
Fingal	37.01	38.47	32.65	37.55	34.95
Galway	16.27	18.57	17.79	17.67	16.95
Kerry	24.44	26.28	22.89	22.77	21.25
Kildare	25.99	26.61	25.62	27.85	25.11
Kilkenny	22.76	31.34	23.44	24.07	23.39
Laois	27.74	26.92	23.99	24.15	18.79
Leitrim	48.68	50.85	47.28	45.81	40.21
Limerick	22.49	22.38	23.24	22.32	20.38
Longford	38.72	37.35	35.63	35.31	31.95
Louth	21.11	20.69	19.89	20.69	19.57
Mayo	26.56	29.20	27.20	27.37	26.34
Meath	17.16	17.69	15.62	17.17	17.18
Monaghan	27.73	30.06	26.78	27.12	24.11
Offaly	20.77	21.58	23.04	20.51	19.51
Roscommon	28.95	29.20	30.97	29.16	22.83
Sligo	22.32	28.73	25.60	24.46	22.50
South Dublin	30.81	30.81	29.24	26.89	25.51
Tipperary JLC	24.32	24.71	22.94	21.25	18.84
Waterford County	27.38	26.87	24.60	25.46	24.82
Westmeath	24.17	26.22	25.06	24.95	22.55
Wexford	22.19	19.18	18.72	21.11	18.51
Wicklow	24.51	24.91	23.05	23.17	20.28
<b>Total County:</b>	<b>25.67</b>	<b>26.86</b>	<b>24.75</b>	<b>25.04</b>	<b>22.91</b>
<b>City Councils:</b>					
Cork	47.18	45.17	42.07	35.07	31.22
Dublin	49.18	47.36	44.54	40.92	38.53
Limerick	30.01	36.05	32.16	30.99	23.72
Waterford	37.56	37.66	35.39	33.51	32.44
<b>Total City:</b>	<b>47.02</b>	<b>45.57</b>	<b>42.66</b>	<b>38.71</b>	<b>35.78</b>
<b>All Authorities</b>	<b>29.32</b>	<b>30.05</b>	<b>27.81</b>	<b>27.54</b>	<b>25.27</b>

Range 2009: €16.27 - €49.18

The 2005-2006 figures are based on the 2002 Census returns whilst the 2007-2009 figures are based on the 2006 Census returns

Table 3: Budgeted Local Authority Stock Expenditure.

€

Library authority	2009	2008	2007	2006	2005
<i>County Councils:</i>					
Carlow	109,000	144,000	94,000	109,000	109,000
Cavan	131,000	130,000	130,000	123,720	143,720
Clare	280,000	284,800	266,000	335,000	335,000
Cork	1,261,170	1,401,300	1,085,100	1,021,800	985,800
Donegal	440,000	456,400	450,000	450,000	440,000
Dún Laoghaire Rathdown	790,300	874,600	726,000	557,000	457,000
Fingal	1,500,000	1,600,000	1,276,000	1,193,000	1,074,000
Galway	100,000	550,000	520,000	429,000	429,000
Kerry	410,000	430,000	400,000	365,000	330,000
Kildare	545,000	545,000	470,000	450,000	423,152
Kilkenny	88110	226,000	224,000	209,000	203,000
Laois	190,000	219,000	188,000	186,000	171,000
Leitrim	80,000	95,000	95,000	80,200	65,200
Limerick	438,700	482,700	437,700	397,000	378,200
Longford	119,300	123,000	110,000	96,716	95,000
Louth	195,000	235,000	220,000	220,000	238,248
Mayo	297,880	499,200	480,000	484,010	484,007
Meath	275,000	275,000	250,000	220,000	220,000
Monaghan	65,000	175,000	175,000	170,000	165,000
Offaly	245,253	205,253	179,470	159,680	159,681
Roscommon	385,000	357,000	309,000	290,000	244,000
Sligo	35,000	245,000	195,000	165,000	148,000
South Dublin	950,000	1,000,000	940,000	920,000	830,000
Tipperary JLC	300,000	341,500	254,500	246,000	246,000
Waterford Co.	153,000	129,246	109,997	109,997	109,000
Westmeath	170,000	165,000	165,000	155,000	150,000
Wexford	362,000	362,000	367,000	347,000	342,000
Wicklow	320,000	400,000	373,000	313,000	293,000
<i>Total County:</i>	<b>10,235,713</b>	<b>11,950,999</b>	<b>10,489,767</b>	<b>9,802,123</b>	<b>9,268,008</b>
<i>City Councils:</i>					
Cork	499,300	440,000	430,500	422,100	350,000
Dublin	2,376,000	2,326,000	2,275,949	1,765,233	1,655,613
Limerick	138,200	170,400	148,250	144,850	134,299
Waterford	207,500	225,000	210,000	202,000	202,000
<i>Total City:</i>	<b>3,221,000</b>	<b>3,161,400</b>	<b>3,064,699</b>	<b>2,534,183</b>	<b>2,341,912</b>
<b>All Authorities</b>	<b>13,456,713</b>	<b>15,112,399</b>	<b>13,544,466</b>	<b>12,336,306</b>	<b>11,609,920</b>

2009 change on 2008 = -11%

N.B.: Budgeted additional (non-recurrent) expenditure on stock is given in Table 5

**Table 3.1: Budgeted Stock Expenditure - Primary School Library Scheme Book Grant.**

	€				
Library authority	2009	2008	2007	2006	2005
<b>County Councils:</b>					
Carlow	0	28,000	26,112	25,637	18,625
Cavan	0	40,000	40,000	24,340	24,340
Clare	0	56,378	54,000	40,000	40,000
Cork	0	170,000	165,000	165,500	123,000
Donegal	0	83,000	80,000	78,700	58,500
Dún Laoghaire Rathdown	0	77,000	74,000	68,000	63,000
Fingal	0	124,000	124,000	107,000	76,000
Galway	0	100,000	80,000	72,000	72,000
Kerry	0	69,000	68,000	60,000	66,666
Kildare	0	106,994	106,994	106,994	71,848
Kilkenny	0	35,000	35,000	35,000	32,000
Laois	0	36,000	34,000	32,000	24,000
Leitrim	0	14,500	14,000	10,000	10,000
Limerick	0	61,300	61,300	60,630	46,300
Longford	0	22,000	21,000	18,284	15,400
Louth	0	60,000	60,000	60,000	58,306
Mayo	0	72,800	69,450	53,000	78,000
Meath	0	90,000	86,000	55,000	55,000
Monaghan	0	30,000	30,000	30,000	30,000
Offaly	0	40,000	40,000	28,979	28,979
Roscommon	0	51,000	29,000	29,000	22,000
Sligo	0	30,000	30,000	25,000	22,000
South Dublin	0	130,000	125,000	125,000	94,000
Tipperary JLC	0	79,000	77,190	56,900	56,900
Waterford	0	30,754	30,003	30,003	21,000
Westmeath	0	45,000	43,610	42,795	31,800
Wexford	0	80,000	75,000	65,000	55,000
Wicklow	0	65,000	65,000	63,000	48,000
<i>Total County:</i>	0	1,826,726	1,743,659	1,567,762	1,342,664
<b>City Councils:</b>					
Cork	0	64,500	64,300	50,000	93,317
Dublin	0	197,500	197,551	197,429	153,227
Limerick	0	33,000	30,000	29,000	20,000
Waterford	0	35,000	30,000	36,160	22,800
<i>Total City:</i>	0	330,000	321,851	312,589	289,344
<b>All Authorities</b>	<b>0</b>	<b>2,156,726</b>	<b>2,065,510</b>	<b>1,880,351</b>	<b>1,632,008</b>

*The Primary School Library Grant Scheme, which was operated by the Department of Education & Science was withdrawn in 2009. The following public library authorities have allocated a portion of their stock fund to the school library service:*

*Roscommon to allocate €30,000 of stock fund to schools*

*Cork City to allocate €59,000 of stock fund to schools*

*Waterford City to allocate €7,500 of stock fund to schools*

**Table 3.2: Budgeted Stock Fund Expenditure: Local Authority + Primary School Library Book Grant.**

	€				
<b>Library authority</b>	<b>2009*</b>	<b>2008</b>	<b>2007</b>	<b>2006</b>	<b>2005</b>
<b>County Councils:</b>					
Carlow	109,000	172,000	120,112	134,637	127,625
Cavan	131,000	170,000	170,000	148,060	168,060
Clare	280,000	341,178	320,000	375,000	375,000
Cork	1,261,170	1,571,300	1,250,100	1,187,300	1,108,800
Donegal	440,000	539,400	530,000	528,700	498,500
Dún Laoghaire Rathdown	790,300	951,600	800,000	625,000	520,000
Fingal	1,500,000	1,724,000	1,400,000	1,300,000	1,150,000
Galway	100,000	650,000	600,000	501,000	501,000
Kerry	410,000	499,000	468,000	425,000	396,666
Kildare	545,000	651,994	576,994	556,994	495,000
Kilkenny	88,110	261,000	259,000	244,000	235,000
Laois	190,000	255,000	222,000	218,000	195,000
Leitrim	80,000	109,500	109,000	90,200	75,200
Limerick	438,700	544,000	499,000	457,630	424,500
Longford	119,300	145,000	131,000	115,000	110,400
Louth	195,000	295,000	280,000	280,000	296,554
Mayo	297,880	572,000	549,450	537,010	562,007
Meath	275,000	365,000	336,000	275,000	275,000
Monaghan	65,000	205,000	205,000	200,000	195,000
Offaly	245,253	245,253	219,470	188,659	188,660
Roscommon	385,000	408,000	338,000	319,000	266,000
Sligo	35,000	275,000	225,000	190,000	170,000
South Dublin	950,000	1,130,000	1,065,000	1,045,000	924,000
Tipperary JLC	300,000	420,500	331,690	302,900	302,900
Waterford	153,000	160,000	140,000	140,000	130,000
Westmeath	170,000	210,000	208,610	197,795	181,800
Wexford	362,000	442,000	442,000	412,000	397,000
Wicklow	320,000	465,000	438,000	376,000	341,000
<b>Total County:</b>	<b>10,235,713</b>	<b>13,777,725</b>	<b>12,233,426</b>	<b>11,369,885</b>	<b>10,610,672</b>
<b>City Councils:</b>					
Cork	499,300	504,500	494,800	472,100	443,317
Dublin	2,376,000	2,523,500	2,473,500	1,962,662	1,808,840
Limerick	138,200	203,400	178,250	173,850	154,299
Waterford	207,500	260,000	240,000	238,160	224,800
<b>Total City:</b>	<b>3,221,000</b>	<b>3,491,400</b>	<b>3,386,550</b>	<b>2,846,772</b>	<b>2,631,256</b>
<b>All Authorities</b>	<b>13,456,713</b>	<b>17,269,125</b>	<b>15,619,976</b>	<b>14,216,657</b>	<b>13,241,928</b>

2009 change on 2008 = -22.1%

*The Primary School Library Grant Scheme, which was operated by the Department of Education & Science was withdrawn in 2009. The following public library authorities have allocated a portion of their stock fund to the school library service:*

*Roscommon to allocate €30,000 of stock fund to schools*

*Cork City to allocate €59,000 of stock fund to schools*

*Waterford City to allocate €7,500 of stock fund to schools*



**Table 3.3: Budgeted Stock Fund Expenditure per capita (Excluding Primary School Library Scheme Book Grant).** €

Library authority	2009	2008	2007	2006	2005
<b>County Councils:</b>					
Carlow	2.16	2.86	1.87	2.37	2.37
Cavan	2.05	2.03	2.03	2.19	2.54
Clare	2.52	2.57	2.40	3.24	3.24
Cork	3.49	3.87	3.00	3.15	3.04
Donegal	2.99	3.10	3.06	3.27	3.20
Dún Laoghaire Rathdown	4.07	4.51	3.74	2.90	2.38
Fingal	6.25	6.67	5.32	6.07	5.47
Galway	0.43	2.37	2.24	2.05	2.05
Kerry	2.93	3.08	2.86	2.75	2.49
Kildare	2.92	2.92	2.52	2.74	2.58
Kilkenny	1.01	2.58	2.56	2.60	2.53
Laois	2.83	3.27	2.80	3.16	2.91
Leitrim	2.76	3.28	3.28	3.11	2.53
Limerick	3.53	3.67	3.33	3.27	3.12
Longford	3.47	3.58	3.20	3.11	3.06
Louth	1.75	2.11	1.98	2.16	2.34
Mayo	2.41	4.03	3.88	4.12	4.12
Meath	1.69	1.69	1.54	1.64	1.64
Monaghan	1.16	3.13	3.13	3.23	3.14
Offaly	3.46	2.90	2.53	2.51	2.51
Roscommon	6.55	6.07	5.26	5.39	4.54
Sligo	0.57	4.02	3.20	2.84	2.54
South Dublin	3.85	4.05	3.81	3.85	3.48
Tipperary JLC	2.01	2.29	1.71	1.76	1.76
Waterford	2.46	2.08	1.77	1.93	1.91
Westmeath	2.14	2.08	2.08	2.16	2.09
Wexford	2.75	2.75	2.79	2.98	2.93
Wicklow	2.54	3.17	2.96	2.73	2.56
<b>Total County:</b>	<b>2.92</b>	<b>3.40</b>	<b>2.98</b>	<b>3.06</b>	<b>2.90</b>
<b>City Councils:</b>					
Cork	4.18	3.68	3.60	3.43	2.84
Dublin	4.69	4.59	4.50	3.56	3.34
Limerick	2.31	3.24	2.82	2.68	2.49
Waterford	4.54	4.92	4.59	4.53	4.53
<b>Total City:</b>	<b>4.41</b>	<b>4.37</b>	<b>4.23</b>	<b>3.53</b>	<b>3.26</b>
<b>All Authorities</b>	<b>3.17</b>	<b>3.56</b>	<b>3.20</b>	<b>3.15</b>	<b>2.96</b>

See also Chart 5

Cells shaded yellow indicate those authorities which have met the revised minimum target expenditure on stock of €3.77 per head of resident population as recommended in *Branching Out – Future Directions (2008)*.

Cells shaded grey indicate those authorities which had met the minimum target expenditure on stock of €3.27 per head of resident population as recommended by the *Branching Out (1998)*.

The 2005-2006 figures are based on the 2002 Census returns whilst the 2007-2009 figures are based on the 2006 Census returns



**Table 3.4: Budgeted stock fund expenditure per capita, 2005-2009 (including Primary School Library Scheme Book Grant)** €

Library authority	2009*	2008	2007	2006	2005
<b><i>County Councils:</i></b>					
Carlow	2.16	3.42	2.39	2.93	2.77
Cavan	2.05	2.66	2.66	2.62	2.97
Clare	2.52	3.08	2.88	3.63	3.63
Cork	3.49	4.34	3.45	3.66	3.41
Donegal	2.99	3.66	3.60	3.84	3.62
Dún Laoghaire Rathdown	4.07	4.90	4.12	3.26	2.71
Fingal	6.25	7.18	5.83	6.62	5.86
Galway	0.43	2.81	2.59	2.40	2.40
Kerry	2.93	3.57	3.35	3.21	2.99
Kildare	2.92	3.50	3.10	3.40	3.02
Kilkenny	1.01	2.98	2.96	3.04	2.93
Laois	2.83	3.80	3.31	3.71	3.32
Leitrim	2.76	3.78	3.77	3.50	2.91
Limerick	3.53	4.14	3.79	3.77	3.50
Longford	3.47	4.22	3.81	3.70	3.55
Louth	1.75	2.65	2.52	2.75	2.91
Mayo	2.41	4.62	4.44	4.57	4.79
Meath	1.69	2.24	2.06	2.05	2.05
Monaghan	1.16	3.66	3.66	3.80	3.71
Offaly	3.46	3.46	3.10	2.96	2.96
Roscommon	6.55	6.94	5.75	5.93	4.95
Sligo	0.57	4.52	3.69	3.26	2.92
South Dublin	3.85	4.58	4.31	4.38	3.87
Tipperary JLC	2.01	2.82	2.22	2.16	2.16
Waterford	2.46	2.57	2.25	2.46	2.28
Westmeath	2.14	2.65	2.63	2.75	2.53
Wexford	2.75	3.35	3.35	3.53	3.40
Wicklow	2.54	3.68	3.47	3.28	2.97
<i>Total County:</i>	2.92	3.92	3.48	3.55	3.32
<b><i>City Councils:</i></b>					
Cork	4.18	4.22	4.14	3.84	3.60
Dublin	4.69	4.99	4.89	3.96	3.65
Limerick	2.31	3.87	3.39	3.22	2.86
Waterford	4.54	5.68	5.25	5.34	5.04
<i>Total City:</i>	4.41	4.82	4.68	3.97	3.67
<b>All Authorities</b>	3.17	4.07	3.68	3.63	3.38

The 2005-2006 figures are based on the 2002 Census returns whilst the 2007-2009 figures are based on the 2006 Census returns

**Table 3.5: Budgeted Stock Fund as Percentage of Overall Library Expenditure.**

Library authority	2009	2008	2007	2006	2005
<b>County Councils:</b>					
Carlow	8.3	13.2	10.0	11.8	11.6
Cavan	7.3	8.7	8.8	8.4	12.2
Clare	8.1	9.6	9.6	11.8	12.6
Cork	14.8	16.7	15.5	15.6	16.2
Donegal	13.1	14.8	14.6	15.3	15.9
Dún Laoghaire Rathdown	13.9	16.0	14.8	12.8	11.9
Fingal	16.9	18.7	17.9	17.6	16.8
Galway	2.7	15.1	14.6	13.6	14.1
Kerry	12.0	13.6	14.6	14.1	14.1
Kildare	11.3	13.1	12.1	12.2	12.0
Kilkenny	3.6	9.5	12.6	12.6	12.5
Laois	10.2	14.1	13.8	15.4	17.7
Leitrim	5.7	7.4	8.0	7.6	7.2
Limerick	15.7	18.5	16.3	16.9	17.2
Longford	9.0	11.3	10.7	10.5	11.1
Louth	8.3	12.8	12.7	13.3	14.9
Mayo	9.1	15.8	16.3	16.7	18.2
Meath	9.8	12.7	13.2	11.5	11.9
Monaghan	4.2	12.2	13.7	14.0	15.4
Offaly	16.7	16	13.4	14.5	15.2
Roscommon	22.6	23.8	18.6	20.3	21.7
Sligo	2.6	15.7	14.4	13.3	13.0
South Dublin	12.5	14.9	14.8	16.3	15.2
Tipperary JLC	8.3	11.4	9.7	10.2	11.5
Waterford	9.0	9.6	9.1	9.7	9.2
Westmeath	8.9	10.1	10.5	11.0	11.2
Wexford	12.4	17.5	17.9	16.7	18.4
Wicklow	10.3	14.8	15.1	14.2	14.7
<i>Total County:</i>	<i>11.3</i>	<i>14.6</i>	<i>14.1</i>	<i>14.2</i>	<i>14.5</i>
<b>City Councils:</b>					
Cork	8.9	9.4	9.8	10.9	11.5
Dublin	9.5	10.5	11	9.7	9.5
Limerick	7.7	10.7	10.5	10.4	12.0
Waterford	12.1	15.1	14.8	15.9	15.5
<i>Total City:</i>	<i>9.5</i>	<i>10.6</i>	<i>11</i>	<i>10.3</i>	<i>10.2</i>
<b>All Authorities</b>	<b>10.8</b>	<b>13.6</b>	<b>13.2</b>	<b>13.2</b>	<b>13.4</b>

*Includes Primary School Library Grant Scheme*

Table 4: Budgeted Local Authority Expenditure - ALL Programmes.

€

Library authority	2009	2008	2007	2006	2005
<b>County Councils:</b>					
Carlow	51,837,310	51,548,600	47,860,148	43,007,300	40,158,055
Cavan	70,758,490	73,211,588	71,064,372	62,324,716	58,273,998
Clare	118,791,883	116,079,679	110,780,804	101,005,269	93,174,456
Cork	357,587,921	360,827,214	319,241,080	296,970,391	268,178,085
Donegal	178,818,287	178,586,366	164,812,428	150,162,030	136,542,900
Dún Laoghaire Rathdown	220,436,900	227,114,400	220,210,500	196,445,300	172,054,000
Fingal	270,314,100	257,400,000	230,160,000	214,460,200	193,287,200
Galway	250,780,011	238,458,602	240,128,940	211,209,388	209,382,037
Kerry	141,798,000	141,611,000	129,801,000	112,493,200	108,177,778
Kildare	139,032,067	135,000,000	127,142,534	115,517,882	104,346,934
Kilkenny	71,073,299	77,103,200	66,698,722	63,991,500	57,527,000
Laois	73,586,000	73,166,000	67,921,335	59,908,000	54,617,000
Leitrim	44,699,272	46,305,638	42,917,533	41,332,463	37,049,527
Limerick	125,892,138	126,584,064	117,969,307	105,763,266	103,364,781
Longford	51,867,652	52,603,600	48,914,800	46,186,000	43,092,500
Louth	74,512,249	72,379,550	67,662,950	64,706,100	56,088,300
Mayo	146,542,053	152,653,711	141,047,031	130,347,247	119,354,303
Meath	108,045,202	120,026,440	106,429,442	95,745,678	87,414,978
Monaghan	68,492,601	67,930,583	67,253,461	59,711,205	55,511,059
Offaly	67,866,500	62,708,811	54,452,902	49,573,947	46,801,618
Roscommon	76,533,300	79,735,000	68,130,000	62,539,400	56,764,000
Sligo	61,780,113	63,044,345	56,767,813	50,843,800	46,060,510
South Dublin	284,254,700	284,279,400	308,318,200	268,349,200	223,497,900
Tipperary*	162,278,779	166,072,476	155,668,884	143,020,640	133,831,453
Waterford	80,661,896	76,063,723	72,351,159	63,864,103	57,901,900
Westmeath	77,800,000	82,530,916	71,193,388	59,736,330	54,900,846
Wexford	117,034,323	116,293,756	105,617,877	98,366,108	89,304,542
Wicklow	113,857,866	106,953,381	96,321,923	83,669,686	70,724,344
<b>Total County:</b>	<b>3,606,932,912</b>	<b>3,606,272,043</b>	<b>3,376,838,533</b>	<b>3,051,250,349</b>	<b>2,777,382,004</b>
<b>City Councils:</b>					
Cork	199,312,300	198,284,500	181,101,600	164,108,200	156,304,200
Dublin	928,731,361	914,516,609	847,137,522	787,737,799	710,064,351
Limerick	88,747,627	87,820,796	79,535,391	73,873,311	67,810,324
Waterford	66,375,437	62,275,449	56,459,489	51,429,262	47,021,717
<b>Total City:</b>	<b>1,283,166,725</b>	<b>1,262,897,354</b>	<b>1,164,234,002</b>	<b>1,077,148,572</b>	<b>981,200,592</b>
<b>All Authorities</b>	<b>4,890,099,637</b>	<b>4,869,169,397</b>	<b>4,541,072,535</b>	<b>4,128,398,921</b>	<b>3,758,582,596</b>

2009 increase on 2008 = +0.4%

\* Combined budget of North Tipperary County Council and South Tipperary County Council

**Table 4.1: Budgeted Expenditure on Library Services as a Percentage of Total Local Authority expenditure (ALL Programmes).** %

<b>Library authority</b>	<b>2009</b>	<b>2008</b>	<b>2007</b>	<b>2006</b>	<b>2005</b>
<i>County Councils:</i>					
Carlow	2.5	2.5	2.5	2.7	2.8
Cavan	2.5	2.7	2.7	2.8	2.4
Clare	2.9	3.1	3.0	3.1	3.2
Cork	2.4	2.6	2.5	2.6	2.5
Donegal	1.9	2.0	2.2	2.3	2.3
Dún Laoghaire Rathdown	2.6	2.6	2.5	2.5	2.5
Fingal	3.3	3.6	3.4	3.4	3.6
Galway	1.5	1.8	1.7	1.7	1.7
Kerry	2.4	2.6	2.5	2.7	2.6
Kildare	3.5	3.7	3.8	4.0	3.9
Kilkenny	3.4	3.6	3.1	3.0	3.3
Laois	2.5	2.5	2.4	2.4	2.0
Leitrim	3.2	3.2	3.2	2.9	2.8
Limerick	2.2	2.3	2.6	2.6	2.4
Longford	2.6	2.4	2.5	2.4	2.3
Louth	3.2	3.2	3.3	3.3	3.6
Mayo	2.2	2.4	2.4	2.5	2.6
Meath	2.6	2.4	2.4	2.5	2.6
Monaghan	2.3	2.5	2.2	2.4	2.3
Offaly	2.2	3.7	3.0	2.6	2.7
Roscommon	2.2	2.2	2.7	2.5	2.2
Sligo	2.2	2.8	2.7	2.8	2.8
South Dublin	2.7	2.7	2.3	2.4	2.7
Tipperary*	2.2	2.2	2.2	2.1	2.0
Waterford	2.1	2.2	2.1	2.3	2.4
Westmeath	2.5	2.5	2.8	3.0	3.0
Wexford	2.5	2.2	2.3	2.5	2.4
Wicklow	2.7	2.9	3.0	3.2	3.3
<i>Total County:</i>	2.5	2.6	2.6	2.6	2.6
<i>City Councils:</i>					
Cork	2.8	2.7	2.8	2.6	2.5
Dublin	2.7	2.6	2.7	2.6	2.7
Limerick	2.0	2.2	2.1	2.3	1.9
Waterford	2.6	2.8	2.9	2.9	3.1
<i>Total City:</i>	2.7	2.6	2.7	2.6	2.6
<b>All Authorities</b>	<b>2.5</b>	<b>2.6</b>	<b>2.6</b>	<b>2.6</b>	<b>2.6</b>

\* Combined budget of North Tipperary County Council and South Tipperary County Council

**Table 5: Budgeted capital expenditure on library services as notified to An Chomhairle by library authorities, 2009**

€

Library authority	Automation	Buildings	Stock	Vehicles	Other	Total
<b>County Councils:</b>						
Carlow	0	200,000	0	50,000	0	<b>250,000</b>
Cavan	0	0	0	380,000	0	<b>380,000</b>
Clare	0	0	0	0	0	<b>0</b>
Cork	0	0	0	0	0	<b>0</b>
Donegal	0	0	0	0	0	<b>0</b>
Dún Laoghaire Rathdown	10,000	30,000	0	0	10,000	<b>50,000</b>
Fingal	0	1,022,000	0	0	0	<b>1,022,000</b>
Galway	0	0	0	0	0	<b>0</b>
Kerry	0	0	0	0	0	<b>0</b>
Kildare	0	2,131,000	0	0	0	<b>2,131,000</b>
Kilkenny	0	0	0	0	0	<b>0</b>
Laois	0	0	100,000	0	0	<b>100,000</b>
Leitrim	0	0	0	0	0	<b>0</b>
Limerick	0	0	0	0	0	<b>0</b>
Longford	50,000	500,000	0	0	0	<b>550,000</b>
Louth	10,000	600,000	0	0	0	<b>610,000</b>
Mayo	0	0	0	0	0	<b>0</b>
Meath	0	0	0	0	0	<b>0</b>
Monaghan	0	1,500,000	0	0	0	<b>1,500,000</b>
Offaly	0	0	0	0	0	<b>0</b>
Roscommon	10,000	30,000	0	70,000	0	<b>110,000</b>
Sligo	0	0	0	0	0	<b>0</b>
South Dublin	0	0	0	0	0	<b>0</b>
Tipperary*	0	0	0	0	0	<b>0</b>
Waterford	0	0	0	0	0	<b>0</b>
Westmeath	0	0	100,000	0	0	<b>100,000</b>
Wexford	0	5,000,000	150,000	0	0	<b>5,150,000</b>
Wicklow	0	433,208	0	0	0	<b>433,208</b>
<b>Total County:</b>	<b>80,000</b>	<b>11,446,208</b>	<b>350,000</b>	<b>500,000</b>	<b>10,000</b>	<b>12,386,208</b>
<b>City Councils:</b>						
Cork	0	0	0	0	0	<b>0</b>
Dublin	0	0	0	0	0	<b>0</b>
Limerick	0	0	0	0	0	<b>0</b>
Waterford	40,000	30,000	15,000	0	0	<b>85,000</b>
<b>Total City:</b>	<b>40,000</b>	<b>30,000</b>	<b>15,000</b>	<b>0</b>	<b>0</b>	<b>85,000</b>
<b>All Authorities</b>	<b>120,000</b>	<b>11,476,208</b>	<b>365,000</b>	<b>500,000</b>	<b>10,000</b>	<b>12,471,208</b>

*Note: a number of authorities indicated planned capital projects for 2009 but were not able to supply financial data relating to them. This table gives only a partial picture of budgeted expenditure on capital projects.*

## **Appendix 1: Notes on the returns**

**Cavan: 2006:** *Other Expenditure* includes €60,674 for a new archives service.

## **Appendix 2: Guidance notes**

Data relating to local authority estimates of expenditure on public library services is collected on an annual basis by An Chomhairle Leabharlanna by means of a questionnaire. Authorities are requested to supply a breakdown of proposed library budgets under the following headings:

**Operation and Maintenance** - includes staff salaries, general day to day running costs (heating, lighting, etc.) and general property management.

**Provision and improvement** - includes items such as automation.

**Bookfund** - Planned expenditure on stock acquisition is further categorized under the following sub-heads:

- *General stock*
- *Primary School Library Scheme* The Department of Education and Science allocates a per capita grant scheme for the provision of books and other items of stock to primary school students. This grant allocation is given to local authorities to administer through the public library service.
- *Other* - includes serials, non-book items, etc.

**Contribution to An Chomhairle Leabharlanna** - Annual assessment made on local authorities by the Minister for the Environment, Heritage and Local Government for the purpose of funding An Chomhairle Leabharlanna.

**Loans** – Subsidy amounts payable by the Department of the Environment, Heritage and Local Government in relation to leases and pre-1988 non-Exchequer loans at a rate of 50%.

**Other** - Items of expenditure not covered by the above.

Variations in accounting and reporting procedures have made standardization of returns difficult. For example, some authorities include expenditure on serials under *Operation and Maintenance*, others include them under *Bookstock*. Some authorities do not include their contribution to An Chomhairle Leabharlanna in the library budget. Whereas attempts have been made to present this information in a consistent fashion, the data published in this report is as supplied by the local authorities. In order to achieve this, An Chomhairle has included data from other sources. Any major amendments are clearly indicated in the text.

On occasion authorities amend their returns retrospectively. These changes are noted in the relevant sections. Such retrospective amendments also affect total and sub-totals and any derived data.

All financial data is given in Euros.

2006 Census figures were used to calculate per capita expenditure for the 2007-2009 estimates.

2002 Census figures were used to calculate per capita expenditure for previous years.

**Census Appendix 3: Population statistics**

<b>Authority</b>	<b>2002 Census</b>	<b>2006 Census</b>	<b>% change</b>
<b>County</b>			
Carlow	46,014	50,349	9.4
Cavan	56,546	64,003	13.2
Clare	103,277	110,950	7.4
Cork	324,767	361,877	11.4
Donegal	137,575	147,264	7.0
Dún Laoghaire-Rathdown	191,792	194,038	1.2
Fingal	196,413	239,992	22.2
Galway	209,077	231,670	10.8
Kerry	132,527	139,835	5.5
Kildare	163,944	186,335	13.7
Kilkenny	80,339	87,558	9.0
Laois	58,774	67,059	14.1
Leitrim	25,799	28,950	12.2
Limerick	121,281	131,516	8.4
Longford	31,068	34,391	10.7
Louth	101,821	111,267	9.3
Mayo	117,446	123,839	5.4
Meath	134,005	162,831	21.5
Monaghan	52,593	55,997	6.5
Offaly	63,663	70,868	11.3
Roscommon	53,774	58,768	9.3
Sliogo	58,200	60,894	4.6
South Dublin	238,835	246,935	3.4
Tipperary JLC	140,131	149,244	6.5
Waterford	56,952	62,213	9.2
Westmeath	71,858	79,346	10.4
Wexford	116,596	131,749	13.0
Wicklow	114,676	126,194	10.0
<i>Total County</i>	<i>3,199,743</i>	<i>3,515,932</i>	<i>9.9</i>
<b>City Councils:</b>			
Cork	123,062	119,418	-3.0
Dublin	495,781	506,211	2.1
Limerick	54,023	52,539	-2.7
Waterford	44,594	45,748	2.6
<i>Total City</i>	<i>717,460</i>	<i>723,916</i>	<i>0.9</i>
<b>TOTAL</b>	<b>3,917,203</b>	<b>4,239,848</b>	<b>8.2</b>